

# INDUSTRY KITCHENS

[www.industrykitchens.com.au](http://www.industrykitchens.com.au) 1800 611 058



## HydroTap G5 BC Classic Plus Chrome

Boiling Chilled



**Finish:** Chrome

**Product code:** H55784Z00AU

**Capacity:** Residential

Zip HydroTap Classic Plus Boiling, Chilled, Filtered water tap features simple, intuitive controls including continuous flow to fill bottles, Boiling water safety lock, and antimicrobial protection impregnated within the new Classic Plus touch-pad for enhanced hygiene. The water system features a single under bench command centre including full colour interactive touch screen display with pin code protection and customisable settings including 2 boiling water safety modes, 3 energy saving modes including ON/OFF timers and sensor activated 'sleep when it's dark', 'Quiet' mode with automated intelligent fan speed adjustment, antimicrobial protection impregnated into key water paths for enhanced hygiene, 100% water efficient air cooled technology, and 0.2 micron water filtration.

## Specifications

Product name	HydroTap G5 BC Classic Plus Chrome
Product code	H55784Z00AU
Filtered water type	BC
Product approvals	WaterMark, RCM, ARC
Warranty	5 years (appliance warranty 36 months plus additional 24 months tank warranty)

## Plumbing

Water supply requirements	Cold
Water connection	1/2" BSP (G1/2)
Water valves	Integrated 500kPa Pressure limiting valve and Dual Check Valve
Water pressure	Min 170kPa - Max 700kPa

## Electrical

Power rating	1.44kW 220-240V 50Hz
Power supply	1 × 10 Amp socket outlet

## Tap design

Tap	Zip HydroTap CLASSIC PLUS Tap (Chrome)
HydroTap style	Classic Plus
Finish	Chrome

## Command centre

Dimensions	W280mm x D478mm x H333mm
------------	--------------------------

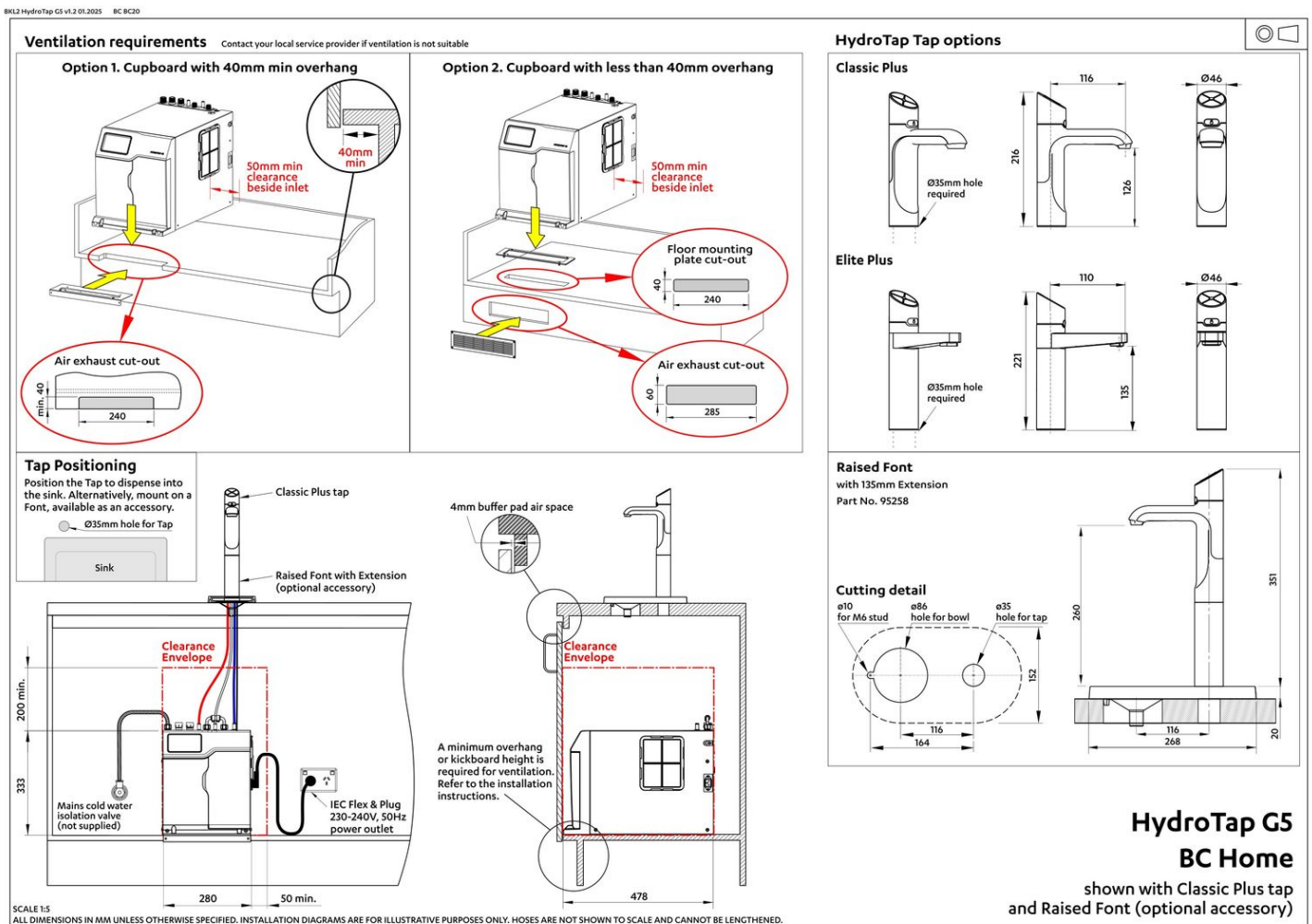
# Installation

## Installation requirements

1. Installation and connection of your Zip HydroTap must be carried out by a qualified person, observing national and local regulations.
2. You will require suitable mains electrical and drinking water connections, plus waste water drainage all within 1.5 metres of the product.
3. **Discrete cabinetry cut outs are required for airflow. 40mm minimum clearance on cupboard base overhang required otherwise alternative installation options are available.**
4. Installation on most bench tops is straightforward however some stone bench tops may require a specialised cutting service.
5. If you live in a hard water area, we recommend installation of a Zip scale filtration kit.
6. Installation by Zip Professional Service can be arranged with a phone call or through [www.zipwater.com/book-service-visit](http://www.zipwater.com/book-service-visit)

## Files

Installation Layout 3D (DWG)



Installation Layout (PDF)

# BIM files

			
<a href="#">↓ ArchiCAD Swift Globals Library (LCF)</a>	<a href="#">↓ ArchiCAD Zip Water Library (LCF)</a>	<a href="#">↓ Revit Project File (RFA)</a>	<a href="#">↓ Revit Virtual Showroom (RVT)</a>

[↓ Download all](#)

# Certifications

 <b>Health &amp; Safety AS/NZS 4801</b>	 <b>Environment ISO 14001</b>	 <b>Quality ISO 9001</b>	 <b>EPD</b> INTERNATIONAL EPD SYSTEM	 <b>ARC</b> AU02691		 <b>Lead Free</b>
						

						
<a href="#">↓ Health &amp; Safety (PDF)</a>	<a href="#">↓ Environment ISO (PDF)</a>	<a href="#">↓ Quality ISO (PDF)</a>	<a href="#">↓ Environmental Product Declaration Brochure (PDF)</a>	<a href="#">↓ ARC (PDF)</a>	<a href="#">↓ Filter performance (PDF)</a>	<a href="#">↓ HydroTap Clean SDS (PDF)</a>

# Manuals & brochures



 Brochure (PDF)



 Instruction manual (PDF)



 Quick guide (PDF)



 Tap operation label (PDF)



 User manual (PDF)

 Download all