

# HYDROTAP G5 BCHA20 4-IN-1 CLASSIC TAP WITH ARC MIXER CHROME



BOILING



CHILLED



HOT & AMBIENT

FILTERED

UNFILTERED

## Order Code H51821Z00AU

Zip HydroTap Classic 4 in 1 Boiling, Chilled, Filtered water plus Hot and Cold washing up water from two separate taps. The system features a single under bench command centre including full colour interactive touch screen display with pin code protection and customisable settings including 2 boiling water safety modes, 3 energy saving modes including ON/OFF timers and sensor activated 'sleep when it's dark', 'Quiet' mode with automated intelligent fan speed adjustment, antimicrobial protection impregnated into key water paths for enhanced hygiene, 100% water efficient air cooled technology, and 0.2 micron water filtration.



Manufacturing Code	H51821Z00AU
Capacity	Commercial
Number of people	1-20
Boiling Cups per hour	100
Chilled Cups per hour	75

---

Tap	Zip HydroTap CLASSIC Tap (Chrome)
Water Pressure	Min 300kPa - Max 700kPa
Water Connection	1/2" BSP (G1/2)
Water Supply Requirements	Cold
Water Valves	Integrated 500kPa Pressure limiting valve and Dual Check Valve
Power Rating	1.9kW 220-240V 50Hz
Power Supply	1 x 10 Amp socket outlet
Dimensions	W280mm x D478mm x H333mm
Product Approvals	WaterMark, RCM, ARC
Wels Rating	5 Star, 6 litres
Warranty	5 years (appliance warranty 36 months plus additional 24 months tank warranty)

---

## Installation Requirements

1. Installation and connection of your Zip HydroTap must be carried out by a qualified person, observing national and local regulations.
2. You will require suitable mains electrical and drinking water connections, plus waste water drainage all within 1.5 metres of the product.
3. **Discrete cabinetry cut outs are required for airflow. 40mm minimum clearance on cupboard base overhang required otherwise alternative installation options are available.**
4. Installation on most bench tops is straightforward however some stone bench tops may require a specialised cutting service.
5. If you live in a hard water area, we recommend installation of a Zip scale filtration kit.
6. Installation by Zip Professional Service can be arranged with a phone call or through [www.zipwater.com/book-service-visit](http://www.zipwater.com/book-service-visit)

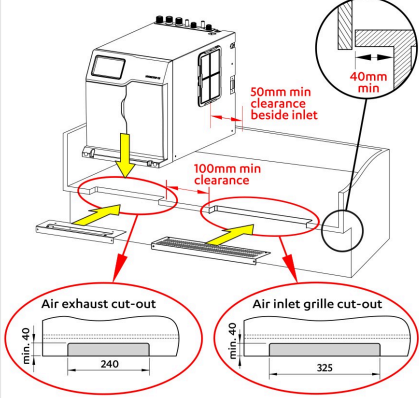
---

### Installation Detail

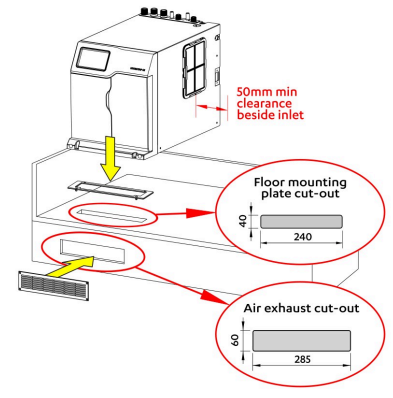
### Ventilation requirements

Contact your local service provider if ventilation is not suitable

#### Option 1. Cupboard with 40mm min overhang



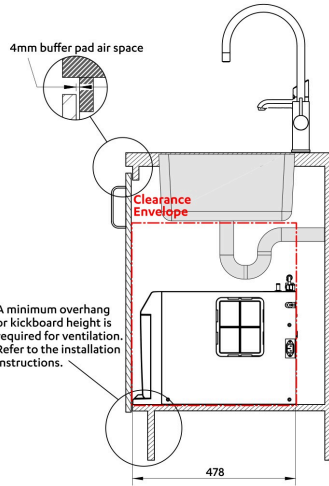
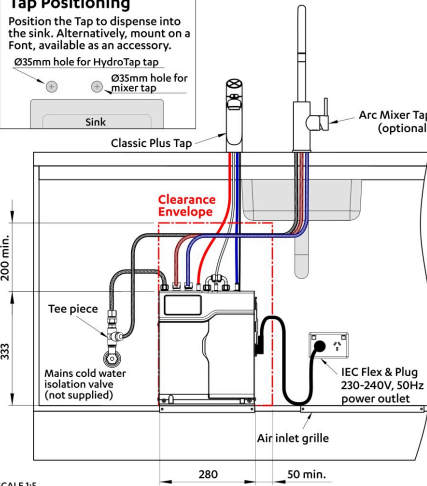
#### Option 2. Cupboard with less than 40mm overhang



### Tap Positioning

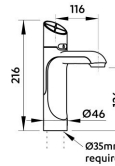
Position the Tap to dispense into the sink. Alternatively, mount on a Font, available as an accessory.

Ø35mm hole for HydroTap tap  
Ø35mm hole for mixer tap

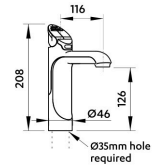


### HydroTap Tap options

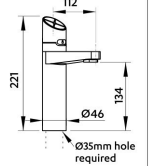
#### Classic Plus



#### Classic



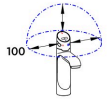
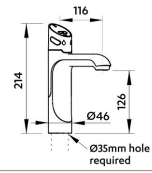
#### Elite Plus



#### Touch-Free Wave

100mm clearance envelope is required.

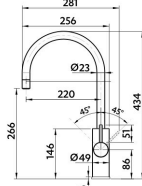
For Sink installations, install on the left-hand side of the sink for ease of access to Boiling water function.



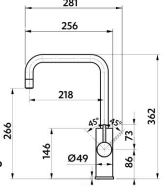
### Vented Mixer Tap options

Only cold water supply required

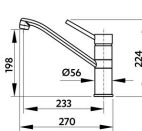
#### Arc Mixer Tap



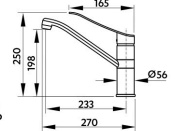
#### Cube Mixer Tap



#### Classic Mixer Tap



#### Accessible Mixer Tap



## HydroTap G5 BC20 H

shown with Classic Plus tap and Arc Mixer Tap (Vented)

SCALE 1:5  
ALL DIMENSIONS IN MM UNLESS OTHERWISE SPECIFIED. INSTALLATION DIAGRAMS ARE FOR ILLUSTRATIVE PURPOSES ONLY. HOSES ARE NOT SHOWN TO SCALE AND CANNOT BE LENGTHENED.