



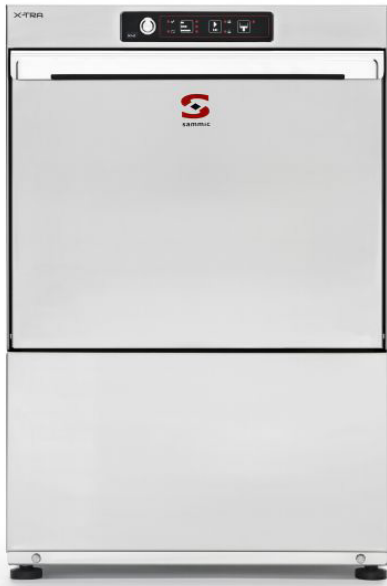
GLASSWASHER X-41B 230/50/1 DD AU

400x400mm racks. Max. loading height: 280mm

P/N 1302037



WARE WASHING
COMMERCIAL GLASSWASHERS



FEATURES AND BENEFITS

- ✓ Intuitive use.
- ✓ Catering grade stainless steel construction.
- ✓ Double skinned door equipped with magnetic micro-switch and high-efficiency seal, ensuring thermal and acoustic insulation.
- ✓ Completely rounded, stainless steel wire rack support and guide.
- ✓ Electronic control panel with anti-moisture seal.
- ✓ Highly efficient stainless steel dispersers ensure optimum water distribution for enhanced washing results.
- ✓ Rinsing dispersers offer clean design. Assembly without screws.
- ✓ Double filter system provides effective wash pump protection.
- ✓ Independent rinse boiler complete with adjustable thermostat and thermal lock option.
- ✓ Easily removable dispersers and filters for cleaning and maintenance. No tools needed.
- ✓ Designed for quick and easy maintenance. Fast access to components for on-site maintenance.
- ✓ 100% tested.

SALES DESCRIPTION

Top + bottom wash arms. 3 wash cycles. Cold rinse facility. Option of built-in water softener.

- ✓ Best performance.
- ✓ Optimal washing results.
- ✓ Sturdy and reliable.
- ✓ Stainless steel, sturdy and resistant washing arms. Don't get damaged because of chemical corrosion.
- ✓ 2.8 kW boiler: optimal recovery time.
- ✓ Full optional list.

INCLUDES

- ✓ Drain pump and non-return valve. equipment.
- ✓ Rinse aid doser. ✓ 1 open basket.
- ✓ Variable detergent dosing ✓ 1 mixed basket.
- ✓ 1 small cutlery basket.

ACCESSORIES

- Stands for glass- and dishwashers similar
- High Feet Kit
- Dosing equipments
- Manual water softeners
- Automatic water softeners
- 400X400 mm. baskets
- Inserts, supplements &



sammic | www.sammic.com
Food Service Equipment Manufacturer

Polígono Basarte, 1. phone +34 943 15 72 36
20720 Azkoitia, Spain sales@sammic.com



Project	Date
Item	Qty
Approved	

product sheet
updated 31/03/2019



GLASSWASHER X-41B 230/50/1 DD AU

400x400mm racks. Max. loading height: 280mm



P/N 1302037

SPECIFICATIONS

Basket dimensions: 400 mm x 400 mm
 Maximum glass height: 280 mm
 Cycle duration: 90 " / 120 " / 150 "
 Production baskets/hour: 40 / 30 / 24
 Boiler capacity: 4.5 l
 Wash tank capacity: 16 l
 Water consumption/cycle: 2.2 l

Loading

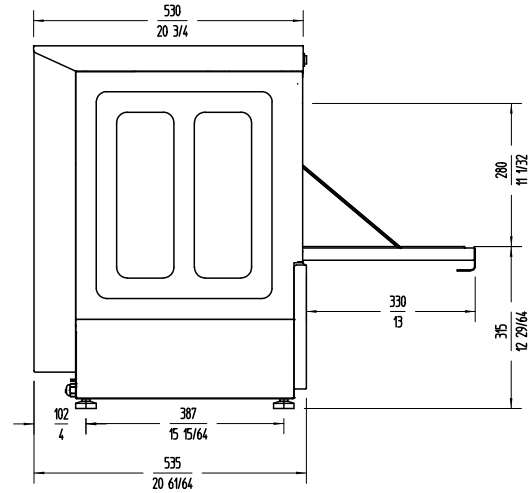
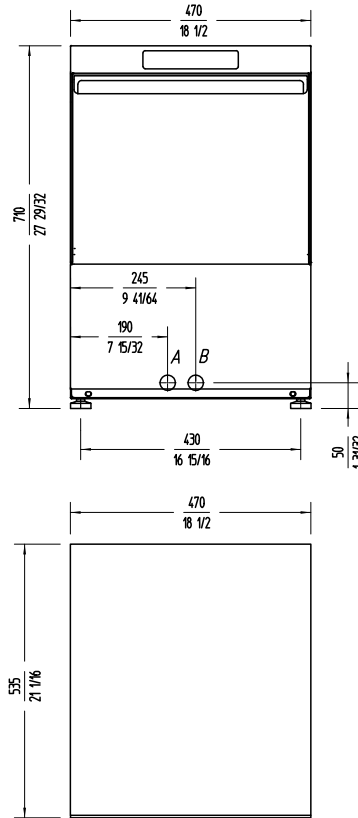
- ✓ Pump: 240 W / 0.33 Hp
- ✓ Tank: 1500 W
- ✓ Boiler: 2800 W
- ✓ Total loading: 3040 W

External dimensions (WxDxH)

- ✓ Width: 470 mm
 - ✓ Depth: 535 mm
 - ✓ Height: 710 mm
- Net weight: 40.5 Kg
 Noise level (1m.): <70 dB(A)

Crated dimensions

525 x 615 x 820 mm
 Gross weight: 45.5 Kg.



WARE WASHING
COMMERCIAL GLASSWASHERS

sammic | www.sammic.com
 Food Service Equipment Manufacturer

Polígono Basarte, 1. phone +34 943 15 72 36
 20720 Azkoitia, Spain sales@sammic.com



Project	Date
Item	Qty
Approved	