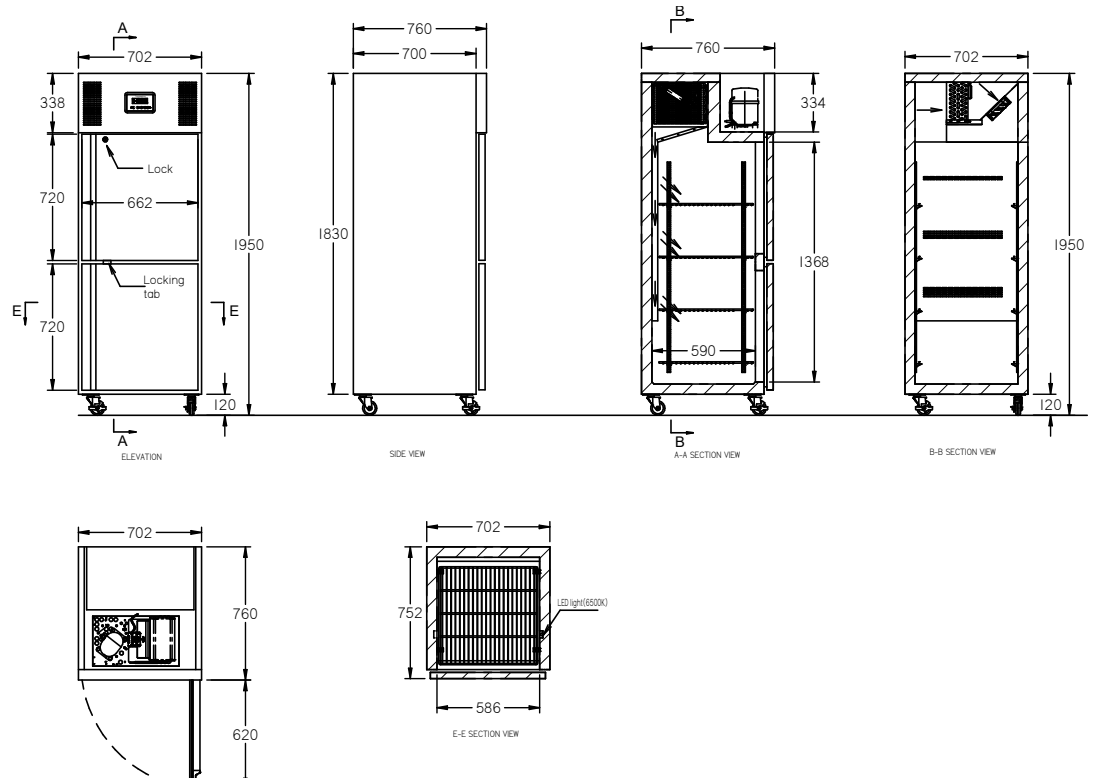


LT1SSHHC



CATEGORY	TOPAZ RANGE
RANGE	Topaz Upright
UNIT	FREEZER
TYPE	SELF CONTAINED
DOORS/ SPLIT	2



SPECIFICATIONS

CAPACITY LITRES	408
TEMPERATURE	-18°C / -22°C
DIMENSIONS - W X D X H (ON 120 MM H CASTORS) MM	702 W x 760 D x 1950 H
WEIGHT UNPACKED (KG)	100

STANDARD INCLUSIONS

DOOR TYPE/SPLIT	S (Solid Doors)
FINISH (INTERIOR AND EXTERIOR EXCLUDING REAR AND UNDER)	S (Stainless Steel)
SHELVES (ADJUSTABLE STRIPS AND CLIPS)	4

GAS TYPE

REFRIGERANT	R290
-------------	------

ELECTRICAL

POWER SUPPLY	10 amp
POWER CABLE LENGTH (METRES)	2
RUNNING AMPS	3.0

PERFORMANCE

KWH/24H READING	6.4
TEMPERATURE CLASS	4 M1
AMBIENT RATING	38°C