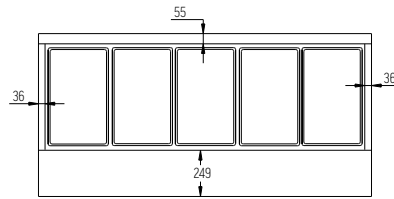


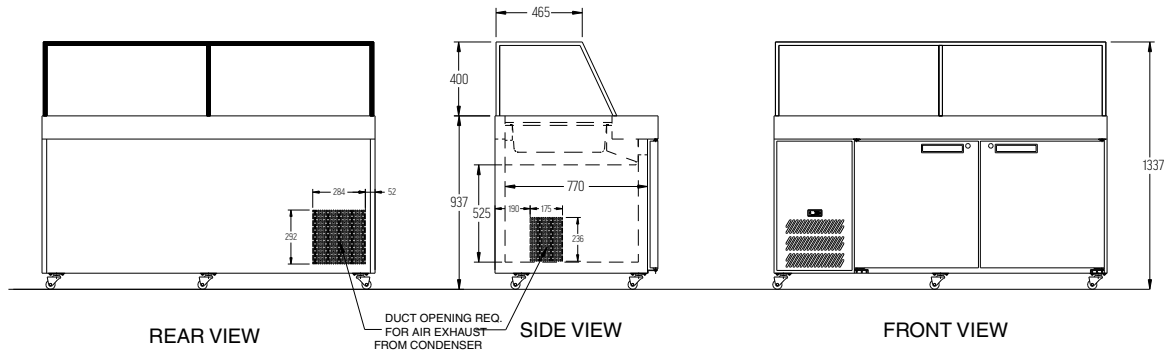
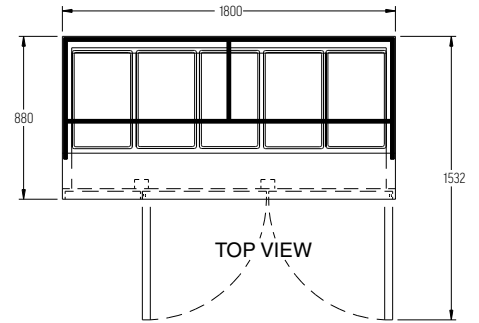
# HSP5



|          |                      |
|----------|----------------------|
| CATEGORY | PREPARATION COUNTERS |
| RANGE    | <b>Banksia</b>       |
| UNIT     | REFRIGERATOR         |
| TYPE     | SELF CONTAINED       |
| DOORS    | 2                    |



WELL OPENING WILL ACCEPT 5 x 1/1 x 150MM DEEP PANS



## SPECIFICATIONS

|  |                        |
|--|------------------------|
| CAPACITY LITRES                        | 500                    |
| TEMPERATURE                            | 1°C / 4°C              |
| GN PANS (INCLUDED)                     | 5 x 1/1 (150 mm deep)  |
| DIMENSIONS - W X D X H (ON CASTORS) MM | 1800 W x 880 D x 872 H |
| WEIGHT UNPACKED (KG)                   | 210                    |

## STANDARD INCLUSIONS \*\*\*

|  |   |
|--|---|
| DOOR TYPE  | Standard: SD (Solid Door)                     |
| FINISH (INTERIOR & EXTERIOR EXCLUDING UNDER. STAINLESS STEEL INTERNAL FLOOR & PREP AREA) | CB (White), CBB (Black), SS (Stainless Steel) |
| SHELVES/DOOR   | 1   |

## ELECTRICAL

|                             |        |
|-----------------------------|--------|
| POWER SUPPLY                | 10 amp |
| POWER CABLE LENGTH (METRES) | 2      |
| RUNNING AMPS                | 5      |

## GAS TYPE

|             |                   |       |
|-------------|-------------------|-------|
| REFRIGERANT | SELF CONTAINED    | R134a |
|             | REMOTE (OPTIONAL) | R448a |

## REFRIGERATION WATTAGES FOR OPTIONAL REMOTE UNITS

|                 |                 |
|-----------------|-----------------|
| REMOTE WATTAGES | 980 @ -10°C SST |
|-----------------|-----------------|

\*\*\* For **OPTIONS** refer to the current Williams Price Guide