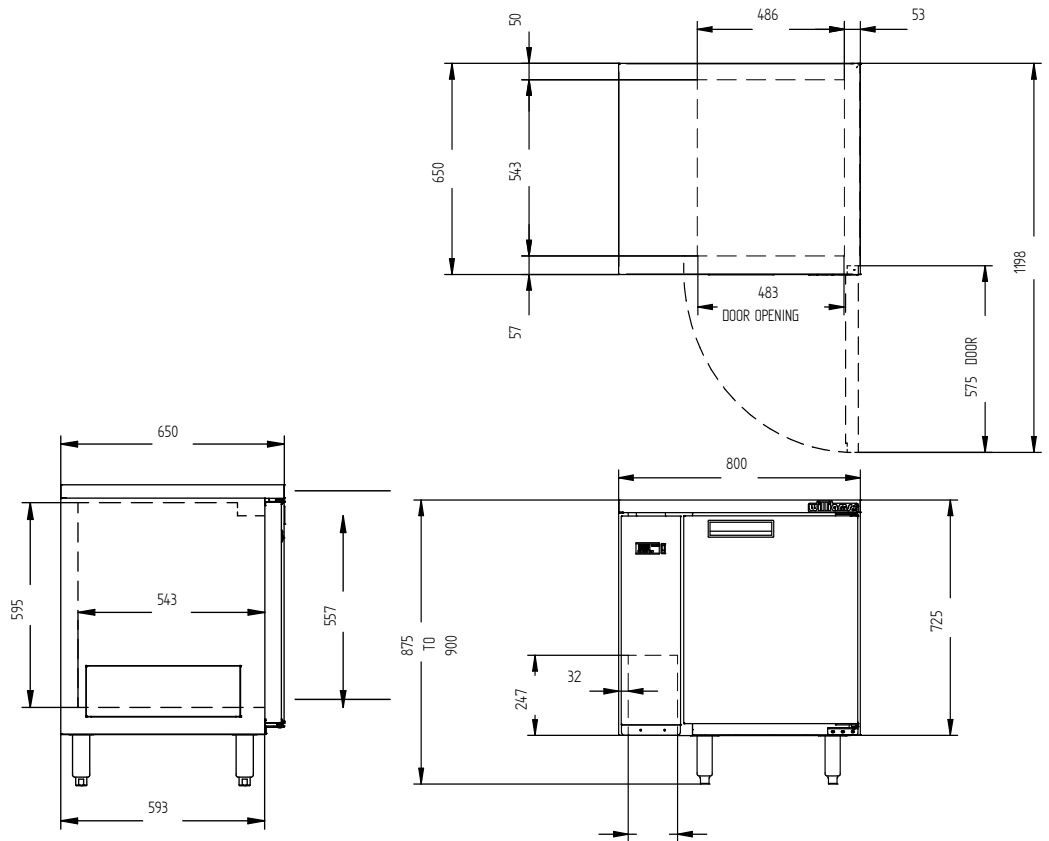


# HB1RS



CATEGORY	GENERAL COUNTERS & BACK BARS
RANGE	<b>BORONIA</b>
UNIT	REFRIGERATOR
TYPE	REMOTE
DOORS	1



## SPECIFICATIONS

CAPACITY LITRES	180
TEMPERATURE	1°C / 4°C
DIMENSIONS - W X D X H (ON LEGS) MM	800 W x 650 D x 875 H
WEIGHT UNPACKED (KG)	100

## STANDARD INCLUSIONS \*\*\*

DOOR TYPE	Standard: S (Solid Door)
FINISH	B (Black with stainless steel countertop and internal floor) or S (Stainless Steel) interior and exterior excluding rear and under
SHELVES/DOOR	2

## ELECTRICAL

POWER SUPPLY	10 amp	
FRIDGE MODELS	RUNNING AMPS	0.6

## GAS TYPE

REFRIGERANT	R448a
-------------	-------

## REFRIGERATION WATTAGES FOR REMOTE UNITS

REMOTE WATTAGES	300 @ -5°C SST
-----------------	----------------

\*\*\* For **OPTIONS** refer to the current Williams Price Guide