

## Electric Cooktops 900mm - Sealed Hobs

RNLB8600SE-B, RNLB8600SE-LS, RNLB8600SE-CD, RNLB8600SE-RB



RNLB8600SE-CD

- Heavy-duty construction
- 2.6kW cast iron hot plate elements
- 4 models of base unit
- 1 model of refrigerated base with two GN 1/1 drawers
- Stainless steel exterior
- Easy clean
- Easy service
- Fully modular

### OVERALL CONSTRUCTION

#### COOKTOP

- Welded hob with one-piece formed 2.0mm 304 stainless steel top
- Splashback and side panels 1.2mm 304 stainless steel
- Front panels vitreous enamel finish
- 2.6kW cast iron hot plate elements with thermal protection
- Aluminised steel internal construction

#### BENCH MOUNT (SUPPLIED AS -B MODEL)

- Four 63mm dia. heavy-duty 1.2mm 304 stainless steel bench legs with adjustable feet.
- Adjustable height 80mm – 105mm

#### LEG STAND (SUPPLIED AS -LS MODEL)

- Fully modular for matched suite finish
- Framed top for connection to Cooktop
- 63mm dia. heavy-duty 1.2mm 304 stainless steel legs with adjust. feet
- Fully modular framed stand shelf with 0.9mm 304 stainless steel finish
- Quick assembly design (no tools required)

#### CABINET BASE WITH DOORS (SUPPLIED AS -CD MODEL)

- Fully modular for match suite finish
- Double skin 0.9mm 304 stainless steel interior and exterior
- Double skin door with enamelled exterior panel
- Optional GN 1/1 4 position racking kit (1 or 2 cabinet bays)
- Up to eight 65mm GN 1/1 capacity
- 63mm dia. heavy-duty 1.2mm 304 stainless steel legs with adjust. feet

#### REFRIGERATED BASE (SUPPLIED AS -RB MODEL)

- Self contained suite matched modular base
- Ventilated system with R134a refrigerant
- -2° to +8°C temperature (Tropical Climate rated)
- Two GN 1/1 drawers
- 100mm deep pan drawer capacity
- Heavy-duty European telescopic drawer guides
- Magnetic drawer gaskets (replaceable without tools)
- 50mm fully foamed CFC free insulation
- 304 stainless steel exterior and interior
- Anti-corrosion treated evaporator
- No condensate drain required
- 63mm dia. heavy-duty 1.2mm 304 stainless steel legs with adjust. feet
- Condensing unit removable through front of unit for service
- Easy clean interior
- Refrigerated bases in stainless steel finish only

### CONTROLS

#### COOKTOP

- Large easy use control knob - heat resistant reinforced
- Easy view control settings on knob
- Cast iron hot plate elements with 6 heat position switch
- Power indicator light for each element control

#### REFRIGERATED BASE

- Digital control electronic thermostat
- Automatic defrost
- Automatic evaporation of defrost water
- -2° to +8°C temperature range

### CLEANING AND SERVICING

- All models with easy clean stainless steel external finish
- One-piece worktop with formed hob wells contain spills
- Access to all parts from front of unit
- Refrigerated Base condenser removable through front of unit

### Series Options

RNLB - Low back models

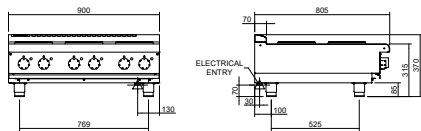
RNB - 215mm splashback option

# Waldorf Bold

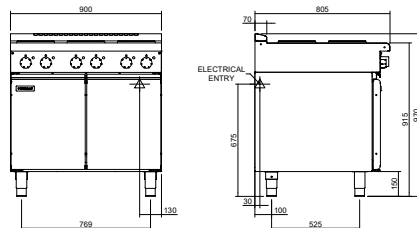
## Electric Cooktops 900mm - Sealed Hobs

RNLB8600SE-B, RNLB8600SE-LS, RNLB8600SE-CD, RNLB8600SE-RB

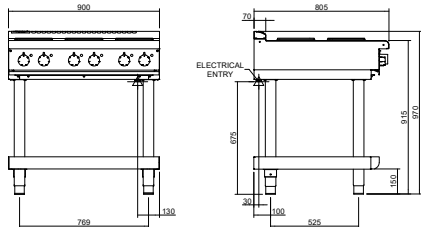
RNLB8600SE-B



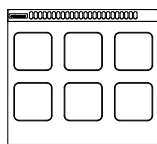
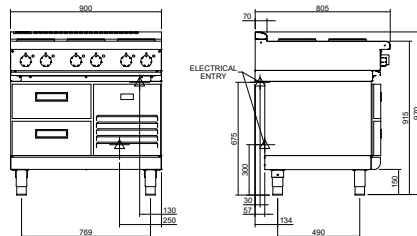
RNLB8600SE-CD



RNLB8600SE-LS



RNLB8600SE-RB



### SPECIFICATIONS

#### Cooktop

2.6kW Cast iron hot plate element

#### Electrical requirements

RNLB8600SE

15.6 kW, 400-415Vac, 50/60Hz, 3P+N+E, 22A

#### Electrical connection

130mm from RH side, 30mm from rear  
70mm from bench height on bench models  
675mm from floor on leg stand and cabinet base models

#### Refrigerated base

Type Ventilated system

Refrigerant R134a (160grams)

Climate classification T – tropical

#### Electrical connection

220-240Vac, 50Hz, 1.8A, 1P+N+E

3 pin 10A plug cordset fitted

#### Dimensions

##### Bench models

Width 900mm

Depth 805mm

Height 315mm

Incl. low back 370mm

Incl. splashback option 530mm

#### All models (excluding Bench model)

Width 900mm

Depth 805mm

Height 915mm

Incl. low back 970mm

Incl. splashback option 1130mm

#### Nett weight

#### Bench and Leg Stand models

90kg

#### Cabinet Base and Refrigerated Base models

130kg

#### Packing data

##### Bench and Leg Stand models

0.55m<sup>3</sup>, 135kg

Width 945mm

Depth 870mm

Height 665mm

##### Cabinet Base and Refrigerated Base models

1.03m<sup>3</sup>, 195kg

Width 945mm

Depth 870mm

Height 1255mm

**MOFFAT**

moffat.com.au

moffat.co.nz

#### Australia

moffat.com.au

#### Moffat Pty Limited

Victoria/Tasmania  
740 Springvale Road  
Mulgrave, Victoria 3170  
Telephone +613-9518 3888  
Facsimile +613-9518 3833  
vsales@moffat.com.au

New South Wales  
Telephone +612-8833 4111  
nswsales@moffat.com.au

South Australia  
Telephone -613-9518 3888  
vsales@moffat.com.au

Queensland  
Telephone +617-3630 8600  
qldsales@moffat.com.au

Western Australia  
Telephone 618-9413 2400  
wasales@moffat.com.au

#### New Zealand

moffat.co.nz

#### Moffat Limited

Rolleston  
45 Illinois Drive  
Izone Business Hub  
Rolleston 7675  
Telephone +64 3-983 6600  
Facsimile +64 3-983 6660  
sales@moffat.co.nz

#### Auckland

Telephone +64 9-574 3150  
sales@moffat.co.nz



ISO9001  
Quality  
Management  
Standard

Designed and manufactured by



#### ISO9001

All Waldorf Bold products are designed and manufactured by Moffat using the internationally recognised ISO9001 quality management system, covering design, manufacture and final inspection, ensuring consistent high quality at all times.

In line with policy to continually develop and improve its products, Moffat Limited reserves the right to change specifications and design without notice.

© Copyright Moffat Ltd  
AN.WBD.S.01.22

an Ali Group Company



The Spirit of Excellence