

Electric Cooktops 600mm

RNLB8400E-B, RNLB8400E-CD, RNLB8400E-LS, RNLB8403E-B, RNLB8403E-CD,
RNLB8403E-LS, RNLB8406E-B, RNLB8406E-CD, RNLB8406E-LS



RNLB8400E-CD

- Heavy-duty construction
- 2.0kW hot plate elements
- Optional 2.4kW open radiant elements
- 300mm and 600mm griddle plate options
- 2 models of base unit
- Stainless steel exterior
- Black vitreous enamel finish to front panels
- Easy clean
- Easy service
- Fully modular

OVERALL CONSTRUCTION

COOKTOP

- Welded hob with 1.5mm 304 stainless steel bull nose
- Splashback and side panels 1.2mm 304 stainless steel
- Front panels 0.9mm 304 stainless steel
- 2.0kW hot plate elements with machine finished 8mm steel plate
- Vitreous enamelled element module spill tray
- Stainless steel hob spill tray
- 2.4kW open radiant elements in heavy-duty welded element frames (optional extra)
- 12mm thick mild steel griddle plates
- 2.5mm 304 stainless steel griddle splash guards
- Aluminised steel internal construction

BENCH MOUNT (SUPPLIED AS -B MODEL)

- Four 63mm dia. heavy-duty 1.2mm 304 stainless steel bench legs with adjustable feet.
- Adjustable height 80mm – 105mm

CABINET BASE (SUPPLIED AS -CD MODEL)

- Fully modular for match suite finish
- Double skin 0.9mm 304 stainless steel interior and exterior
- Optional GN 1/1 4 position racking kit
- 63mm dia. heavy-duty 1.2mm 304 stainless steel legs with adjust. feet

LEG STAND (SUPPLIED AS -LS MODEL)

- Fully modular for matched suite finish
- Framed top for connection to Cooktop
- 63mm dia. heavy-duty 1.2mm 304 stainless steel legs with adjust. feet
- Fully modular framed stand shelf with 0.9mm 304 stainless steel finish
- Quick assembly design (no tools required)

CONTROLS

COOKTOP

- Large easy use control knob - heat resistant reinforced
- Easy view control settings on knob
- Hot plate elements with energy regulator controls
- Radiant elements with energy regulator controls
- 50-320°C thermostat per 300mm griddle section
- Indicator lights for power and heating for each element control

CLEANING AND SERVICING

- All models with easy clean stainless steel external finish
- Removable vitreous enamelled element module and hob spill trays
- Hinge up element and griddle sections
- Access to all parts from front of unit

Series Options

RNLB - Low back models

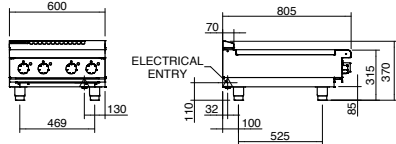
RNB - 215mm splashback option

Electric Cooktops 600mm

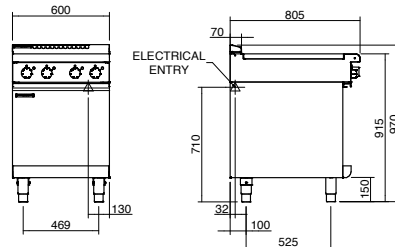


moffat.com.au
moffat.co.nz

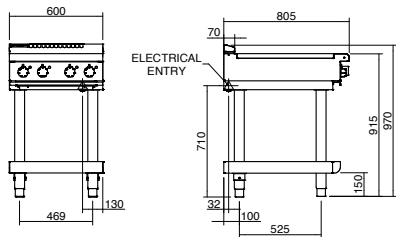
RNLB8400E-B



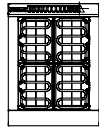
RNLB8400E-CD



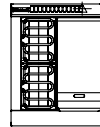
RNLB8400E-LS



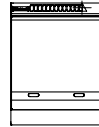
RNLB8400E



RNLB8403E



RNLB8406E



SPECIFICATIONS

Cooktop

2.4 kW Open Radiant elements
2.0 kW Hot Plate elements
3.6 kW Griddle elements
(per 300mm griddle section)

Griddle Plate

300mm Griddle cooking surface
292mm x 475mm, 1387cm²
600mm Griddle cooking surface
592mm x 475mm, 2812cm²

Electrical requirements

RNLB8400E

9.6 kW, 400-415Vac, 50/60hz, 2P+N+E,
20A/phase

RNLB8403E

8.4 kW, 400-415Vac, 50/60hz, 2P+N+E,
20A/phase max.

RNLB8406E

7.2 kW, 230-240Vac, 50/60hz, 1P+N+E, 30A

Electrical connection

130mm from RH side, 31mm from rear
85mm from bench height on bench models
740mm from floor on leg stand and cabinet
base models

Dimensions

Bench models

Width 600mm
Depth 805mm
Height 315mm
Incl. low back 370mm
Incl. splashback option 530mm

All models (excluding Bench model)

Width 600mm
Depth 805mm
Height 915mm
Incl. low back 970mm
Incl. splashback option 1130mm

Nett weight

Bench and Leg Stand models
74kg

Cabinet Base models
79kg

Packing data

Bench and Leg Stand models
0.37m³, 110kg
Width 645mm
Depth 870mm
Height 665mm

Cabinet Base and Refrigerated Base models

0.70m³, 131kg
Width 645mm
Depth 870mm
Height 1255mm

OPTIONS AT EXTRA COST

Hot Plate elements
(replace individual open radiant elements)
Ribbed griddle plates

Australia

moffat.com.au

Moffat Pty Limited

Victoria/Tasmania
740 Springvale Road
Mulgrave, Victoria 3170
Telephone +613-9518 3888
Facsimile +613-9518 3833
vsales@moffat.com.au

New South Wales

Telephone +612-8833 4111
nswsales@moffat.com.au

South Australia

Telephone -613-9518 3888
vsales@moffat.com.au

Queensland

Telephone +617-3630 8600
qldsales@moffat.com.au

Western Australia

Telephone 618-9413 2400
wasales@moffat.com.au

New Zealand

moffat.co.nz

Moffat Limited

Rolleston
45 Illinois Drive
Izone Business Hub
Rolleston 7675
Telephone +64 3-983 6600
Facsimile +64 3-983 6660
sales@moffat.co.nz

Auckland

Telephone +64 9-574 3150
sales@moffat.co.nz



ISO9001
Quality
Management
Standard

Designed and manufactured by



ISO9001

All Waldorf Bold products are designed and manufactured by Moffat using the internationally recognised ISO9001 quality management system, covering design, manufacture and final inspection, ensuring consistent high quality at all times.

In line with policy to continually develop and improve its products, Moffat Limited reserves the right to change specifications and design without notice.

© Copyright Moffat Ltd
AN.WBD.S.02.19

an Ali Group Company



The Spirit of Excellence