

## Electric Cooktops 600mm

RNLB8400E-B, RNLB8400E-CD, RNLB8400E-LS, RNLB8403E-B, RNLB8403E-CD,  
RNLB8403E-LS, RNLB8406E-B, RNLB8406E-CD, RNLB8406E-LS



RNLB8400E-CD

- Heavy-duty construction
- 2.0kW hot plate elements
- Optional 2.4kW open radiant elements
- 300mm and 600mm griddle plate options
- 2 models of base unit
- Stainless steel exterior
- Black vitreous enamel finish to front panels
- Easy clean
- Easy service
- Fully modular

### OVERALL CONSTRUCTION

#### COOKTOP

- Welded hob with 1.5mm 304 stainless steel bull nose
- Splashback and side panels 1.2mm 304 stainless steel
- Front panels 0.9mm 304 stainless steel
- 2.0kW hot plate elements with machine finished 8mm steel plate
- Vitreous enamelled element module spill tray
- Stainless steel hob spill tray
- 2.4kW open radiant elements in heavy-duty welded element frames (optional extra)
- 12mm thick mild steel griddle plates
- 2.5mm 304 stainless steel griddle splash guards
- Aluminised steel internal construction

#### BENCH MOUNT (SUPPLIED AS -B MODEL)

- Four 63mm dia. heavy-duty 1.2mm 304 stainless steel bench legs with adjustable feet.
- Adjustable height 80mm – 105mm

#### CABINET BASE (SUPPLIED AS -CD MODEL)

- Fully modular for match suite finish
- Double skin 0.9mm 304 stainless steel interior and exterior
- Optional GN 1/1 4 position racking kit
- 63mm dia. heavy-duty 1.2mm 304 stainless steel legs with adjust. feet

#### LEG STAND (SUPPLIED AS -LS MODEL)

- Fully modular for matched suite finish
- Framed top for connection to Cooktop
- 63mm dia. heavy-duty 1.2mm 304 stainless steel legs with adjust. feet
- Fully modular framed stand shelf with 0.9mm 304 stainless steel finish
- Quick assembly design (no tools required)

### CONTROLS

#### COOKTOP

- Large easy use control knob - heat resistant reinforced
- Easy view control settings on knob
- Hot plate elements with energy regulator controls
- Radiant elements with energy regulator controls
- 50-320°C thermostat per 300mm griddle section
- Indicator lights for power and heating for each element control

### CLEANING AND SERVICING

- All models with easy clean stainless steel external finish
- Removable vitreous enamelled element module and hob spill trays
- Hinge up element and griddle sections
- Access to all parts from front of unit

### Series Options

RNLB - Low back models

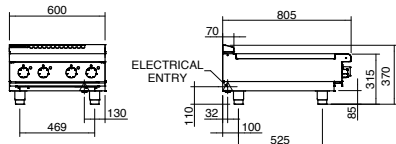
RNB - 215mm splashback option

## Electric Cooktops 600mm

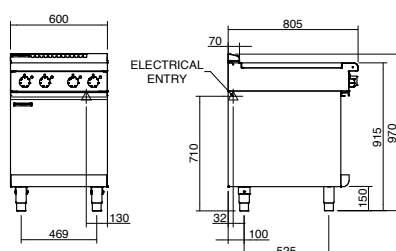


moffat.com.au  
moffat.co.nz

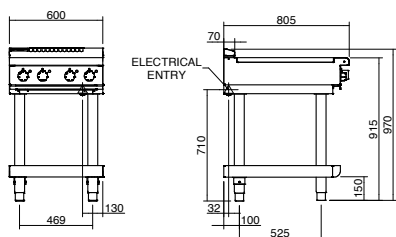
RNLB8400E-B



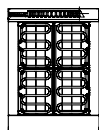
RNLB8400E-CD



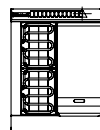
RNLB8400E-LS



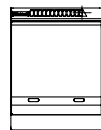
RNLB8400E



RNLB8403E



RNLB8406E



### SPECIFICATIONS

#### Cooktop

2.4 kW Open Radiant elements  
2.0 kW Hot Plate elements  
3.6 kW Griddle elements  
(per 300mm griddle section)

#### Griddle Plate

300mm Griddle cooking surface  
292mm x 475mm, 1387cm<sup>2</sup>  
600mm Griddle cooking surface  
592mm x 475mm, 2812cm<sup>2</sup>

#### Electrical requirements

**RNLB8400E**  
9.6 kW, 400-415Vac, 50/60hz, 2P+N+E,  
20A/phase  
**RNLB8403E**  
8.4 kW, 400-415Vac, 50/60hz, 2P+N+E,  
20A/phase max.  
**RNLB8406E**  
7.2 kW, 230-240Vac, 50/60hz, 1P+N+E, 30A

#### Electrical connection

130mm from RH side, 31mm from rear  
85mm from bench height on bench models  
740mm from floor on leg stand and cabinet  
base models

#### Dimensions

##### Bench models

Width 600mm  
Depth 805mm  
Height 315mm  
Incl. low back 370mm  
Incl. splashback option 530mm

##### All models (excluding Bench model)

Width 600mm  
Depth 805mm  
Height 915mm  
Incl. low back 970mm  
Incl. splashback option 1130mm

#### Nett weight

**Bench and Leg Stand models**  
74kg  
**Cabinet Base models**  
79kg

#### Packing data

**Bench and Leg Stand models**  
0.37m<sup>3</sup>, 110kg  
Width 645mm  
Depth 870mm  
Height 665mm  
**Cabinet Base and Refrigerated Base models**  
0.70m<sup>3</sup>, 131kg  
Width 645mm  
Depth 870mm  
Height 1255mm

#### OPTIONS AT EXTRA COST

Hot Plate elements  
(replace individual open radiant elements)  
Ribbed griddle plates

#### Australia

moffat.com.au

#### Moffat Pty Limited

Victoria/Tasmania  
740 Springvale Road  
Mulgrave, Victoria 3170  
Telephone +613-9518 3888  
Facsimile +613-9518 3833  
vsales@moffat.com.au

New South Wales  
Telephone +612-8833 4111  
nswsales@moffat.com.au

South Australia  
Telephone +613-9518 3888  
vsales@moffat.com.au

Queensland  
Telephone +617-3630 8600  
qldsales@moffat.com.au

Western Australia  
Telephone 618-9413 2400  
wasales@moffat.com.au

#### New Zealand

moffat.co.nz

#### Moffat Limited

Rolleston  
45 Illinois Drive  
Izone Business Hub  
Rolleston 7675  
Telephone +64 3-983 6600  
Facsimile +64 3-983 6660  
sales@moffat.co.nz

Auckland  
Telephone +64 9-574 3150  
sales@moffat.co.nz



**ISO9001**  
Quality  
Management  
Standard

Designed and manufactured by



ISO9001

All Waldorf Bold products are designed and manufactured by Moffat using the internationally recognised ISO9001 quality management system, covering design, manufacture and final inspection, ensuring consistent high quality at all times.

In line with policy to continually develop and improve its products, Moffat Limited reserves the right to change specifications and design without notice.

© Copyright Moffat Ltd  
AN.WBD.S.02.19

an Ali Group Company



The Spirit of Excellence