

# Waldorf Bold

## Electric Chargrill 600mm

CHLB8600ED-B, CHLB8600ED-LS, CHLB8600ED-CD



CHLB8600ED-CD

- Heavy-duty electric chargrill
- Direct contact cooking elements
- Fast response heating
- Up to 400°C cooking temperature
- No cooking grates required
- 8.4kW heating elements
- Separate left and right heat zones
- Water filled cooking well with drain
- Improves performance / avoids fat fires / eases cleaning
- Manual water fill
- Drain collection pan
- 2 models of base unit
- Stainless steel exterior
- Black vitreous enamel finish to front panels
- Easy clean
- Easy service
- Fully modular

### Series Options

CHLB - Low back models

CHB - 215mm splashback option

### OVERALL CONSTRUCTION

#### CHARGRILL

- Welded hob with 2.0mm 304 stainless steel bull nose
- Splashback and side panels 1.2mm 304 stainless steel
- Welded hob with 2.0mm 304 stainless steel bull nose
- Cooking well in 304 stainless steel
- Stainless steel splash guards sides and rear

#### BENCH MOUNT (supplied as – B model)

- Four 63mm dia. heavy-duty 1.2mm 304 stainless steel bench legs with adjustable feet
- Adjustable height 80mm – 105mm

#### LEG STAND (supplied as – LS model)

- Fully modular for matched suite finish
- Framed top for connection to Chargrill
- 63mm dia. heavy-duty 1.2mm 304 stainless steel legs with adjust. feet
- Fully modular framed stand shelf with 0.9mm 304 stainless steel finish
- Quick assembly design (no tools required)

#### CABINET BASE WITH DOOR (supplied as – CD model)

- Fully modular for match suite finish
- Double skin 0.9mm 304 stainless steel interior and exterior
- Double skin door with enamelled exterior panel
- 63mm dia. heavy-duty 1.2mm 304 stainless steel legs with four adjustable feet

### CONTROLS

- Single heat zone control
- Element hinge switch for heating element cut-out when elements hinged up
- Large easy use control knob - heat resistant reinforced
- Easy view control settings on knob
- Indicator light for power heating

### CLEANING AND SERVICING

- All models with easy clean stainless steel external finish
- Removable splash guards
- Hinge up elements with safety support stay
- Element cleaning tool
- Cooking well with drain for wash out cleaning
- Slide out drain collection pan
- Control service through front of unit

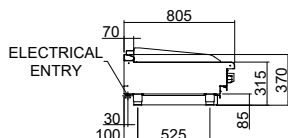
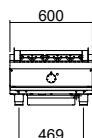
## Electric Chargrill 600mm

CHLB8600ED-B, CHLB8600ED-LS, CHLB8600ED-CD

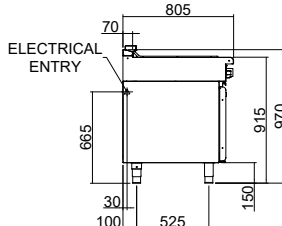


moffat.com.au  
moffat.co.nz

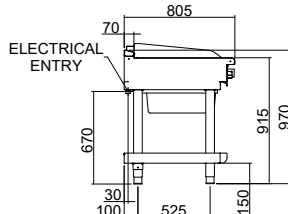
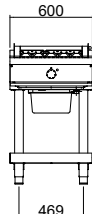
CHLB8600ED-B



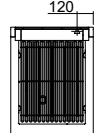
CHLB8600ED-CD



CHLB8600ED-LS



CHLB8600ED



### SPECIFICATIONS

#### Chargrill

#### Elements

5 direct contact heating elements

#### Cooking area

450mm x 590mm, 2655cm<sup>2</sup>

#### Electrical requirements

8.4kW

400-415Vac, 50/60Hz, 3P+N+E

L1 11A

L2 11A

L3 15A

#### Electrical connection

130mm from LH side, 30mm from rear, and 635mm from floor

#### Dimensions

##### Bench model

Width 600mm

Depth 805mm

Height 355mm

Incl. low back 410mm

Incl. splashback option 570mm

##### All models (excluding Bench model)

Width 600mm

Depth 805mm

Height 915mm

Incl. low back 970mm

Incl. splashback option 1130mm

#### Nett weight

##### Bench and Leg Stand models

68kg

##### Cabinet base models

75kg

#### Packing data

##### Bench and Leg Stand models

0.37m<sup>3</sup>, 99kg

Width 645mm

Depth 870mm

Height 665mm

##### Cabinet base models

0.70m<sup>3</sup>, 127kg

Width 645mm

Depth 870mm

Height 1255mm

#### OPTIONS AT EXTRA COST

Castors

Plinth mounting

#### Australia

moffat.com.au

#### Moffat Pty Limited

Victoria/Tasmania  
740 Springvale Road  
Mulgrave, Victoria 3170  
Telephone +613-9518 3888  
Facsimile +613-9518 3833  
vsales@moffat.com.au

New South Wales  
Telephone +612-8833 4111  
nswsales@moffat.com.au

South Australia  
Telephone -613-9518 3888  
vsales@moffat.com.au

Queensland  
Telephone +617-3630 8600  
qldsales@moffat.com.au

Western Australia  
Telephone 618-9413 2400  
wasales@moffat.com.au

#### New Zealand

moffat.co.nz

#### Moffat Limited

Rolleston  
45 Illinois Drive  
Izone Business Hub  
Rolleston 7675  
Telephone +64 3-983 6600  
Facsimile +64 3-983 6660  
sales@moffat.co.nz

Auckland  
Telephone +64 9-574 3150  
sales@moffat.co.nz



#### ISO9001

Quality Management Standard

Designed and manufactured by



#### ISO9001

All Waldorf Bold products are designed and manufactured by Moffat using the internationally recognised ISO9001 quality management system, covering design, manufacture and final inspection, ensuring consistent high quality at all times.

In line with policy to continually develop and improve its products, Moffat Limited reserves the right to change specifications and design without notice.

© Copyright Moffat Ltd  
AN.WBD.S.01.24

an Ali Group Company



The Spirit of Excellence