

Two Door Glass Chiller

Range: BackBar

SKOPE ID: GC002

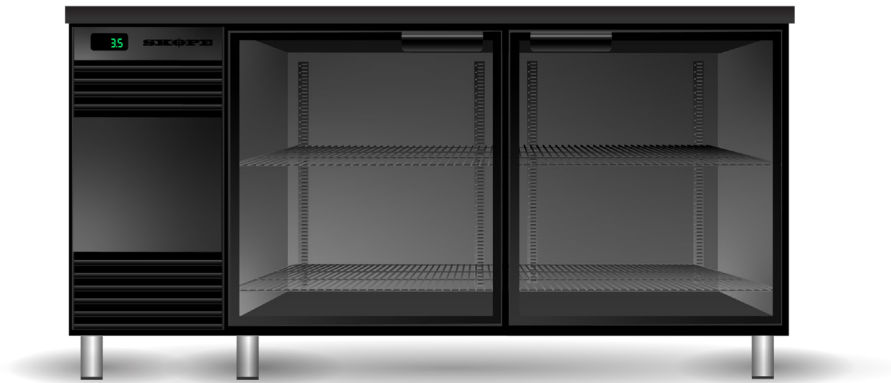
Dimensions: 1585 mm (W) × 590 mm (D) × 870 mm (H)*

Capacity: 290 L

Project: _____

Item #: _____

* Height with legs is adjustable from 855 to 890.



A 2-door under-bar glass chiller designed to keep your bar glasses cool and easily accessible to service staff in busy bars, clubs, and hotels. With a sleek aesthetic, including frameless glass doors, you can create an integrated look for all under-counter glass door bar refrigeration alongside SKOPE's BackBar range. The body is made from powder-coated, galvanised steel with colour options; it can also be upgraded to full stainless steel construction. The cabinet features wire shelving that can accommodate glass racks at either 355 mm × 430 mm, or 430 mm × 430 mm, for keeping your glasses chilled. The glass doors are designed for condensation protection in standard operating environments via the double-glazed, argon-filled, low-e, insulated panels. The glass chiller uses R290 natural refrigerant for ultra-low energy consumption, low heat discharge and low noise output, with a remote version also available. The slim side-mounted and front-breathing refrigeration system wastes the absolute minimum of your precious floor space, while the fully removable refrigeration cartridge can be removed in line with best practice for safe servicing of flammable refrigerants. The fridge is certified to all Australian and New Zealand refrigeration and electrical safety standards.



Warranty



Natural Refrigerant

© 2023 SKOPE Industries Limited | We reserve the right to alter specifications without notice.

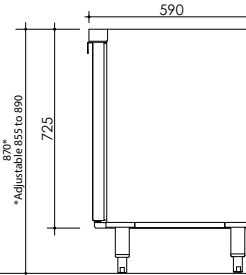
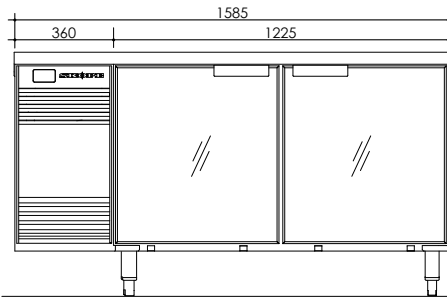
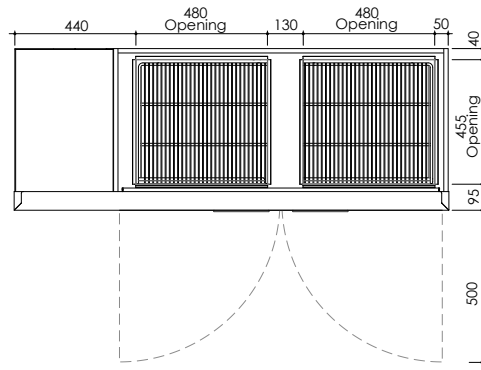
Email: skope@skope.com

AUS Freephone: 1800 121 535

NZ Freephone: 0800 947 5673

skope.com





Ground Clearance
 Leg (standard): 130 to 165 mm
 Castor (optional): 95 to 115 mm
 Plinth (optional): 0 mm

Cabinet

| | | | |
|--------------------|--|--|-----|
| Type | Glass Chiller | | |
| Finish | Powder-coated galvanised steel or stainless steel | | |
| Insulation | Type | PU foam | |
| | Thickness (mm) | 50 | |
| | Blowing Agent | Cyclo-iso pentane (C5H10/C5H12) | |
| Doors | Type | Glass swing door (double-glazed, low-e, argon-filled, tab-locking) | |
| | Opening Size | Height (mm) | 535 |
| | | Width (mm) | 510 |
| Top Opening | Depth (mm) | 455 | |
| | Width (mm) | 480 | |
| Shelving | Four powder-coated wire shelves 4 x adjustable height shelf (495W x 440D) | | |
| Lighting | Sign | n.a. | |
| | Interior | n.a. | |
| Night Lid | Perspex | | |

Dimensions†

| | External | Internal | Packed |
|----------------------------------|----------------------------|----------|--------|
| Width (mm) | 1585 | 1120 | TBC |
| Depth (mm) | 590 | 475 | TBC |
| Height (mm) | 855 to 890 (standard legs) | | |
| | 725 (plinth) | 545 | TBC |
| | 820 to 840 (castors) | | |
| Weight (kg) | 166 | | TBC |
| Capacity (L) | 290 | | |
| Footprint (m²) | 0.94 | | |

Dimensional Tolerances

† Allow for dimensional tolerances when installing the cabinet(s).

| Linear dimensions | Single cabinet | | Multiple cabinets | |
|-------------------|-----------------|-----------------|-------------------|------------------|
| | | | At each joint | At each end wall |
| Less than 1 metre | ±5 mm | ±5 mm | +15 mm | |
| More than 1 metre | -5 mm to +10 mm | -5 mm to +10 mm | +15 mm | |

Performance

| | | | |
|---|----------|------|--|
| Temperature Range (°C) | 1 to 4 | | |
| Maximum Ambient Temperature (°C) | 40 | | |
| Sound Power Level (dB(A)) | Standard | < 66 | |

Ventilation (mm)

| Top | Not required | Sides | Not required | Rear | Not required |
|-----|--------------|-------|--------------|------|--------------|
|-----|--------------|-------|--------------|------|--------------|

Electrical

| | | | |
|-------------------------|--|--|--|
| Supply | 220-240 volts a.c., 50 Hz, single phase supply | | |
| Cord | 1.9 m power cord with 3-pin, 10 amp plug | | |
| Current draw (A) | 2.6 | | |

Refrigeration

| | | | |
|------------------------------|----------------------|------|-----|
| Controller | SCS Connect | | |
| System Type | Removable cartridge | | |
| Cartridge Weight (kg) | 24 | | |
| Refrigerant/Charge | R290/81 g | | |
| Nominal Capacity (W) | 650 (EN12900 MBP) | | |
| Heat Rejection (W) | Average 90 | Peak | 110 |
| Defrost Type | Automatic, off-cycle | | |
| Drainage | No plumbing required | | |



GC.2.GSW
on the SKOPE website

