

Prep Tables

TPP-AT-60D-2-HC

 Pizza Prep Table, 8x 1/3 Top Pans, 2 Drawers + 1 Solid Swing Door



Dimensions	
External Width (mm)	1531
External Depth (mm)	854
External Height (mm)	1133
Exclusions	Depth does not include 26 mm for rear bumpers and 42mm for cutting board overhang.
Gross Volume (Litres)	451
Supplied Shelves	2
Shelf Size (L x D mm)	439 x 712
Internal Net Height (mm)	550
Top Pans Supplied (depth mm)	8x 1/3 GN (150)
Per Drawer Capacity (max depth mm)	1 x 2/1 GN (200)
Unpackaged Weight (kg)	178
Packaged Weight (kg)	189
Packaged Dimensions (W x D x H mm)	1702 x 966 x 1245
Cutting Board (L x D mm)	1531 x 496
Supplied with	Heavy duty lock-in-place ø 127 mm castors (146 mm height)

Build	
Door Description	1 Solid Swing Door
Drawer Count	2
Drawers Location	Right (standard) or Left (option)
Exterior Construction	Stainless steel front, top & lids, aluminium sides and rear
Interior Construction	Clear coated aluminium, stainless steel base
Air Intake Position	Front
Ventilation Position	Front
Clearance Required	Zero back and sides
Cord Length (Meters)	3.35
Standard w/ Locks	Not Standard (SPEC3 option)

Technical	
Temperature Range	0.5 : 5°C
Refrigerant	R290
Voltage/Frequency/Phase	220-240V/50-60Hz/1
Amps	1.8
Watts	414
Defrost Type	Auto



Specifications subject to change without notice.
Chart dimensions rounded up to the next whole millimeter (inches rounded up to the 1/8")

UK & Ireland
EMEA
Australia

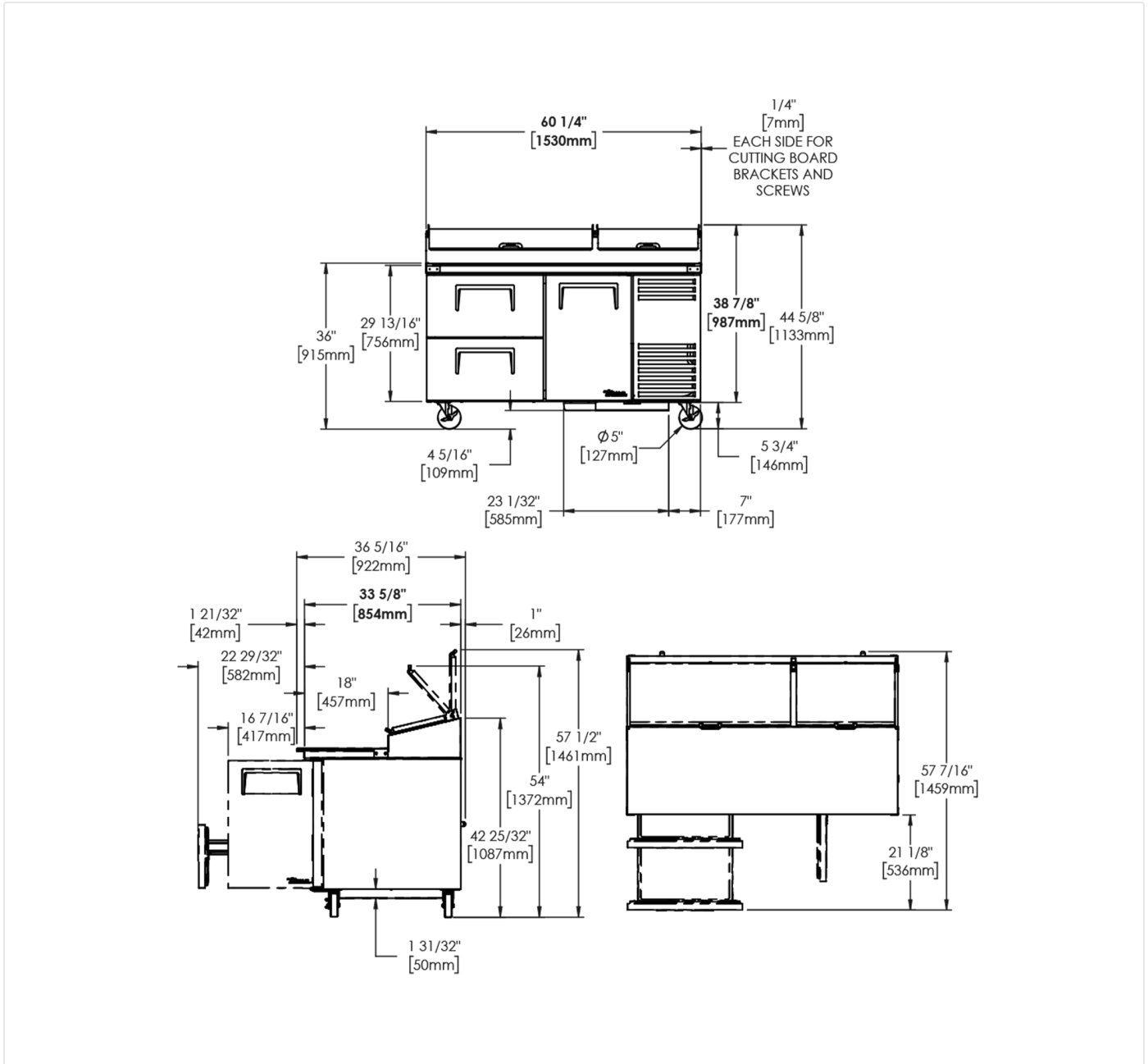
[0800 783 2049](tel:08007832049)
[+61 61 563 07 05](tel:+61615630705)
[+61 2 9619 9999](tel:+61296199999)

TFIUK@truemfg.com
TrueCHCustomerService@truemfg.com
TrueRefAus@truemfg.com



TPP-AT-60D-2-HC

 Pizza Prep Table, 8x 1/3 Top Pans, 2 Drawers + 1 Solid Swing Door



Specifications subject to change without notice.
Chart dimensions rounded up to the next whole millimeter (inches rounded up to the 1/8")

UK & Ireland
EMEA
Australia

0800 783 2049
[+41 61 563 07 05](tel:+41615630705)
[+61 2 9619 9999](tel:+61296199999)

TFIUK@truemfg.com
TrueCHCustomerService@truemfg.com
TrueRefAus@truemfg.com

