

# RONDO®

**MOFFAT®**

**INDUSTRY  
KITCHENS**

[www.industrykitchens.com.au](http://www.industrykitchens.com.au) 1800 611 058

## STM615

### Econom Bench Top Sheeter

#### Product Features

- Bench mounted manual pastry sheeter
- Side push button control
- Pistol grip roller adjustment
- Fold up tables
- Roller gap 0.5 – 30mm
- Roller width 633mm
- Table width 620mm
- Conveyor belt width 605mm
- Overall conveyor length 2420mm
- Speed of discharge conveyor 50cm/sec
- Recommended dough block weight 6 – 8kg



STM615

Rondo is highly regarded Swiss manufacturer of machines for the production of pastry and dough of all types. Rondo is the world leader in the sheeting and laminating technology and can provide the equipment you require, be it for a small Artisan baker or a high volume industrial production facility.

Rondo machines are the result of continuous work on addressing customer-specific needs over the course of 65 years. Rondo engineers, food technologists and master bakers all work together with a single aim - dough sheeters that lead the way in durability, efficiency and adaptability, with a range sized from a compact version to large high-performance machines capable of processing larger amounts of dough over multiple shifts.

## STM615 Econom Bench Top Sheeter

### Model STM615

#### Dimensions

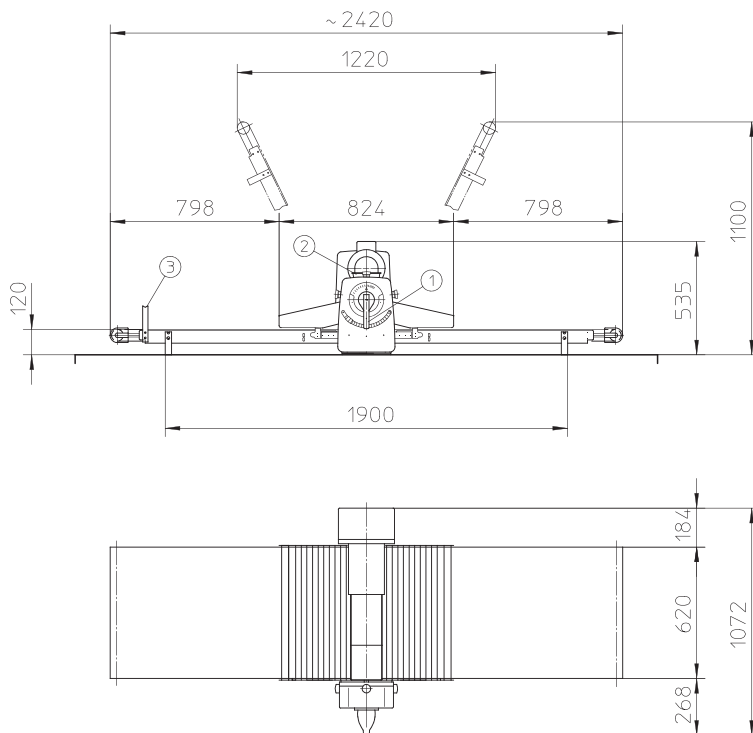
Width 2420mm  
Depth 1072mm  
Height 535mm

#### Dimensions (Folded)

Width 1220mm  
Depth 1072mm  
Height 1100mm

#### Electrical Requirements

400-415V, 3P+E, 50Hz, 0.5kW  
Nett Weight 95kg



[moffat.com.au](http://moffat.com.au)

#### Australia

[moffat.com.au](http://moffat.com.au)

#### Moffat Pty Limited

#### Victoria/Tasmania

740 Springvale Road  
Mulgrave, Victoria 3170  
Telephone +613-9518 3888  
Facsimile +613-9518 3833  
[vsales@moffat.com.au](mailto:vsales@moffat.com.au)

#### New South Wales

Telephone +612-8833 4111  
[nswsales@moffat.com.au](mailto:nswsales@moffat.com.au)

#### South Australia

Telephone +613-9518 3888  
[vsales@moffat.com.au](mailto:vsales@moffat.com.au)

#### Queensland

Telephone +617-3630 8600  
[qldsales@moffat.com.au](mailto:qldsales@moffat.com.au)

#### Western Australia

Telephone +618-9413 2400  
[wasales@moffat.com.au](mailto:wasales@moffat.com.au)



In line with policy to continually develop and improve its products, Moffat Limited reserves the right to change specifications and design without notice. This specification sheet is meant for commercial purpose only. For technical documentation please refer to our service manuals.

© Copyright Moffat Ltd  
AN.R0121

an Ali Group Company



The Spirit of Excellence