

MANUFACTURER:	Roband Australia
CATEGORY:	XL Pie Holders
MODEL / DESC:	Heat 'n' Hold
ORIGIN:	Australia
WARRANTY:	1 Year (refer to website)



Heat 'n' Hold

Precise Holding/Heating Temperature | Reliable Performance | Easy to Clean

The Heat 'n' Hold is a new generation of food display warmer – designed to hold pies, pastries, pretzels, chickens and other food products at the desired temperature, anywhere in the cabinet. Available in stainless steel finish, or with black finish, they all feature dual elements and dual fans to achieve precise temperature control and uniform temperature throughout the cabinet.

The Heat 'n' Hold has a "Pre-Heat" function that allows you to speed up the cabinet preheating process without burning contents. It can also assist in busy periods when the doors are frequently opened.

Eight bakers racks (737 mm x 457 mm) are supplied, with each rack capable of accommodating 2 x 1 gastronorm pans.



Control side of H200R depicting air flow propelled by dual fans throughout the cavity

FEATURES

- Available in stainless steel or black finish
- Dual element and dual fan forced heating
- Precise temperature control which maximises food quality and display life
- Pre-heat function for faster heat-up without burning contents
- Timer control on pre-heat setting
- Insulated for energy efficiency
- User replaceable high temperature lights
- 2 x humidity trays to help prevent product from drying out
- Crumb tray for easy cleaning
- Height adjustable feet
- Supplied with 8 standard 737mm bakers racks
- Lift-off hinged doors control side, for easy loading of full racks of product and easier cleaning
- Option of fixed or sliding glass doors on display side
- Optional HT200/HTB200 trolley for ease of placement

SPECIFICATIONS

MODEL	BODY FINISH	DISPLAY SIDE GLASS	CONTROL SIDE GLASS	POWER Watts	CURRENT Amps	PHASE	DIMENSIONS w x d x h (mm)	WEIGHT (Unpacked) Kg	WEIGHT (Packed) Kg
HEAT "N" HOLD									
H200F	Stainless	Fixed	Hinged	2300	10	Single	880 x 640 x 975	100	120
H200R	Stainless	Sliding	Hinged	2300	10	Single	880 x 640 x 975	100	120
HB200F	Black	Fixed	Hinged	2300	10	Single	880 x 640 x 975	100	120
HB200R	Black	Sliding	Hinged	2300	10	Single	880 x 640 x 975	100	120
TROLLEY TO SUIT HEAT "N" HOLD									
HT200	Stainless trolley for H200 (*height including castors)						900 x 600 x 430*	20	30
HTB200	Black trolley for HB200 (*height including castors)						900 x 600 x 430*	20	30

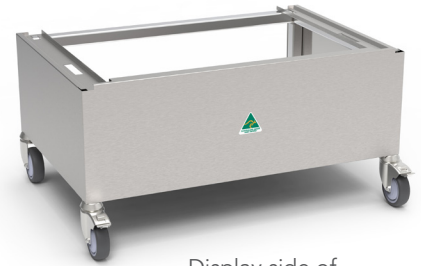
NB: Overall combined height of H200 & HT200 is 1380mm



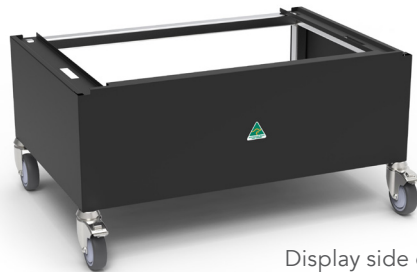
Control side of H200R
depicted on HT200 trolley



Control side of
HT200 trolley



Display side of
HT200 trolley



Display side of
HTB200 trolley



Control side of
HTB200 trolley

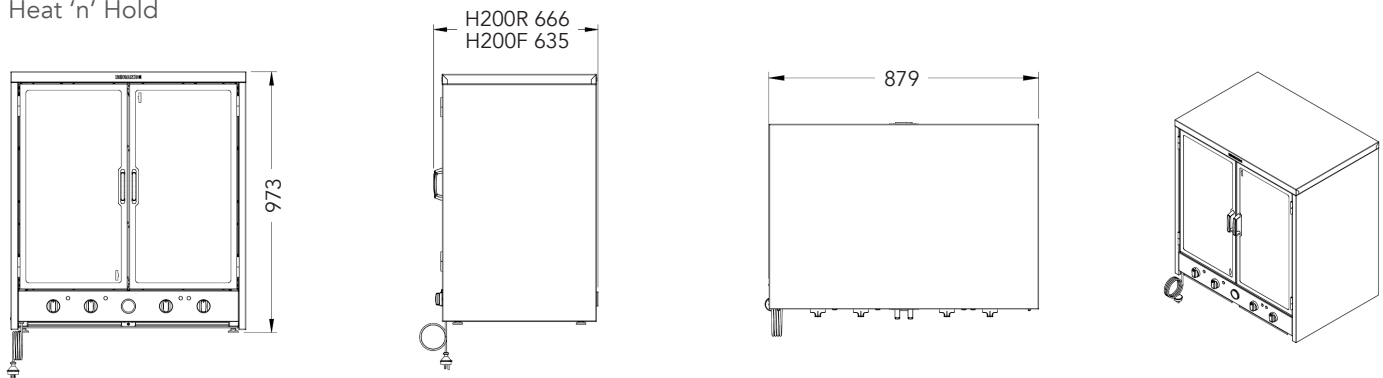


Display side of
HTB200F (fixed pane of glass)

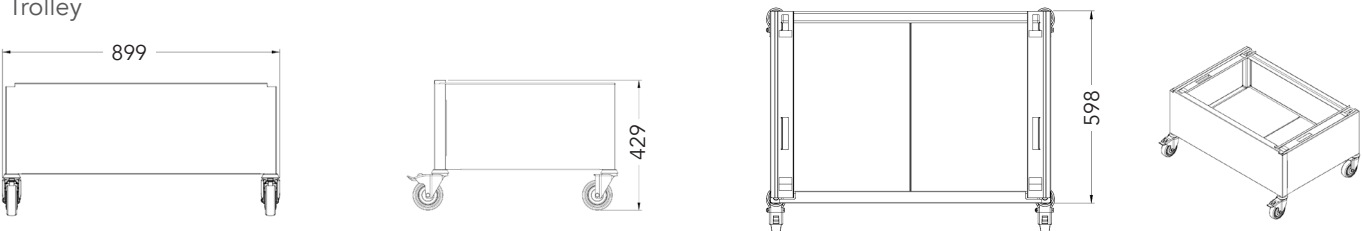
DIMENSIONS

All measurements are in millimetres ~

Heat 'n' Hold



Trolley



~Line drawings not to scale