

MANUFACTURER:	Roband Australia
CATEGORY:	Hot Food Bars
MODEL / DESC:	C Series
ORIGIN:	Australia
WARRANTY:	1 Year (refer to website)



ROBAND®

Curved Glass Hot Foodbars

Holds Hot Food at Serving Temperature | Various Configurations | Wet or Dry Operation

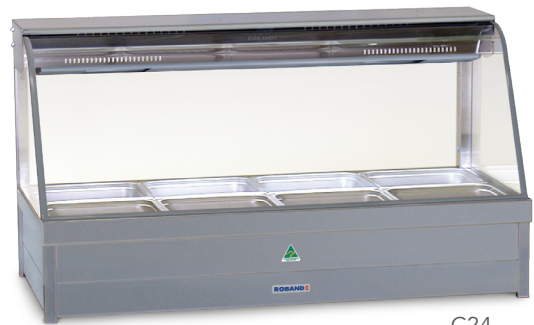
The curved glass hot food display bars are designed to enhance the presentation of food, whilst maintaining it at the correct serving temperature. There are a wide range of sizes and options available to cater for various combinations of gastronorm pans up to 100 mm deep. A set of 1/2 size 65 mm pans is included with each foodbar.

These hot displays match the profile of the curved glass refrigerated food display bars - enabling establishments to attractively display hot and cold food options.

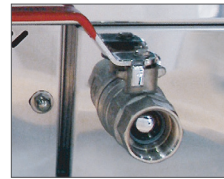
Refer to Food Bar and Bain Marie Accessories Specification Sheet for optional accessories.

FEATURES

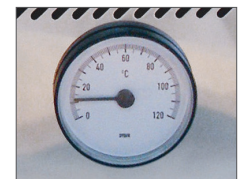
- Stainless steel construction with tubular frame
- Overhead heating and illumination by stylish heat lamps manufactured from extruded aluminium, specifically designed to breathe
- Dura-life stainless steel elements for prolonged element life
- Double skin tank for lower running costs
- Energy regulator control
- Wet or dry operation[^]
- Safety lock ball valve drain
- Toughened safety glass front
- Streamlined for easy cleaning
- Removable cross bars
- Thermometer



C24



Safety lock ball valve drain

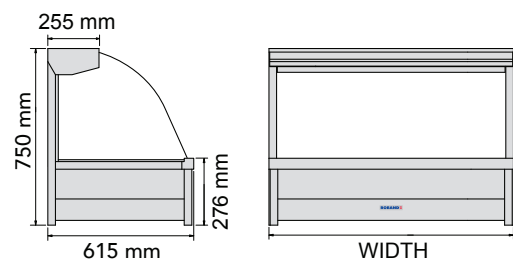


Temperature gauge

[^] Machines should not be left unattended.

SPECIFICATIONS

MODEL	NO. OF PANS	POWER Watts	CURRENT Amps	DIMENSIONS w x d x h (mm)
DOUBLE ROW				
C22 / C22RD	4	1450	6.3	700 x 615 x 750
C23 / C23RD	6	2300	10.0	1030 x 615 x 750
C24 / C24RD	8	3200	13.9	1355 x 615 x 750
C25 / C25RD	10	3450	15.0	1680 x 615 x 750
C26 / C26RD	12	3450	15.0	2005 x 615 x 750



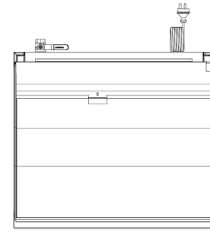
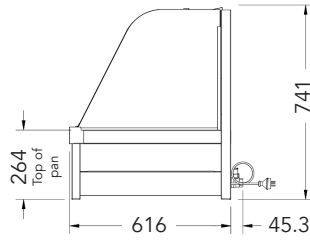
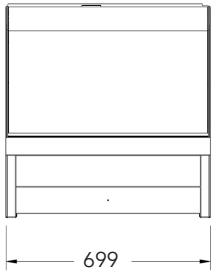
Note: RD signifies roller doors included. Sneeze guards cannot be fitted to the vertical control panel side when roller doors installed.

Note: Hot food display bars are suitable for short term food display. They are not a suitable substitute for a chicken humidifier. They are also designed to accommodate pans available from Roband Australia. Although other brands of pans may fit, this is not guaranteed due to variations in other manufacturers' pans. Hot food display bars are designed to be served around and not over. If units are to be used in a serve over capacity, protection from hot surfaces will need to be considered. Environmental influences will affect the operating performance of hot food displays. Consideration should be given to food types, air movement and ambient temperatures before specifying. For dry, fried foods, roller doors are highly recommended.

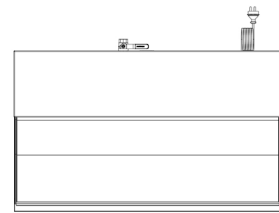
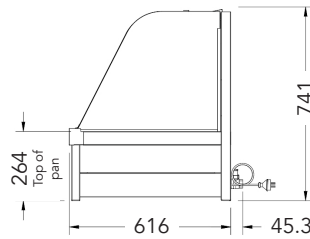
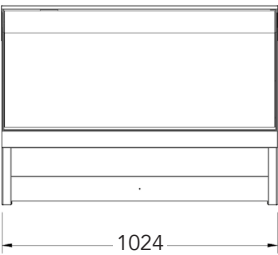
DIMENSIONS

All measurements are in millimetres ~

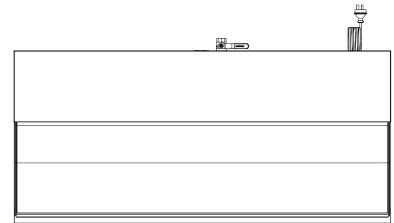
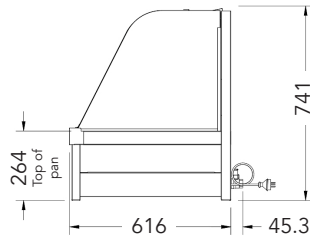
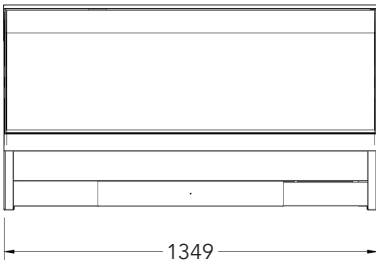
C22



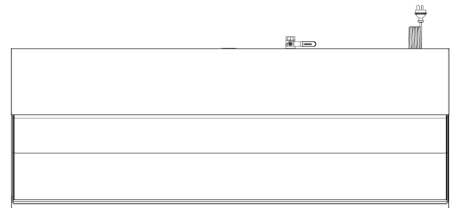
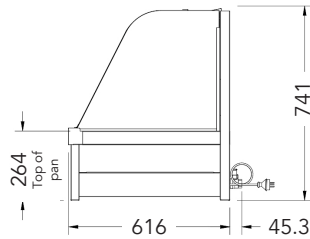
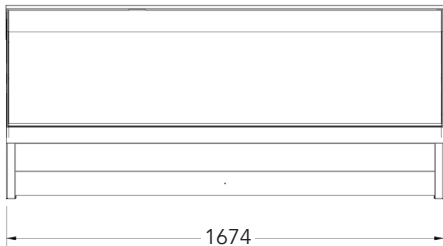
C23



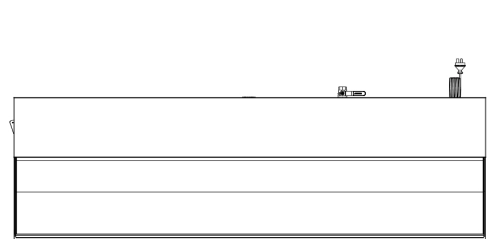
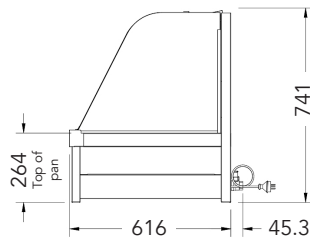
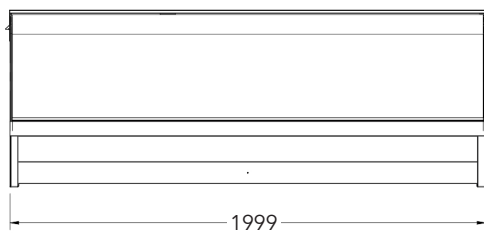
C24



C25



C26



~Line drawings not to scale