

PRIME LINE PROFESSIONAL HOOD-TYPE  
(PASS THROUGH) DISHWASHER

A heavy duty hood-type (pass through) dishwasher that is ergonomically designed and has 4 wash cycles. The Prime Line dishwasher features digital wash and rinse water temperature displays. With new WRIS2+ smart design wash and rinse integrated system reducing rinse water consumption by 25% while still providing a thorough and consistent clean.

**STANDARD FEATURES**

- Full stainless steel frame, tank and panels
- Colour coded status indicators - Green means Ready to start, Blue means cycle started, Red means alarm/check fault
- Soft start - cycle begins slowly to prevent glasses and crockery moving
- Digital temperature display
- Adjustable legs supplied standard
- 1 piece deep drawn wash tank
- Inlet and waste hoses included
- Detergent dispenser & rinse aid dispenser
- Guaranteed rinse cycle only when water reaches set temperature
- Micro filter on wash pump which delivers better wash results
- Accessories include: 2 peg racks, 1 flatware rack, 1 cutlery container

**OPTION**

- Drain pump

**DIMENSIONS**

Dishwasher: 625W x 740D x 1460H/1970 mm

Clearance: 430 mm

Rack size: 500mm x 500mm

**WASH CYCLE**

4 Cycles - Eco Fast (90 sec) / Glasses (90 sec) / Dishes (120 sec) / Intensive (240 sec)

**POWER SUPPLY**

380-415V 3N 50Hz 15A three phase (no plug supplied)

**TECHNICAL DATA**

Energy Consumption: 7.7kW

Water Temp. Supply: 45° - 55°C

Water Connection: 2-4 bar, 3/4"

Tanks Drain: 50mm

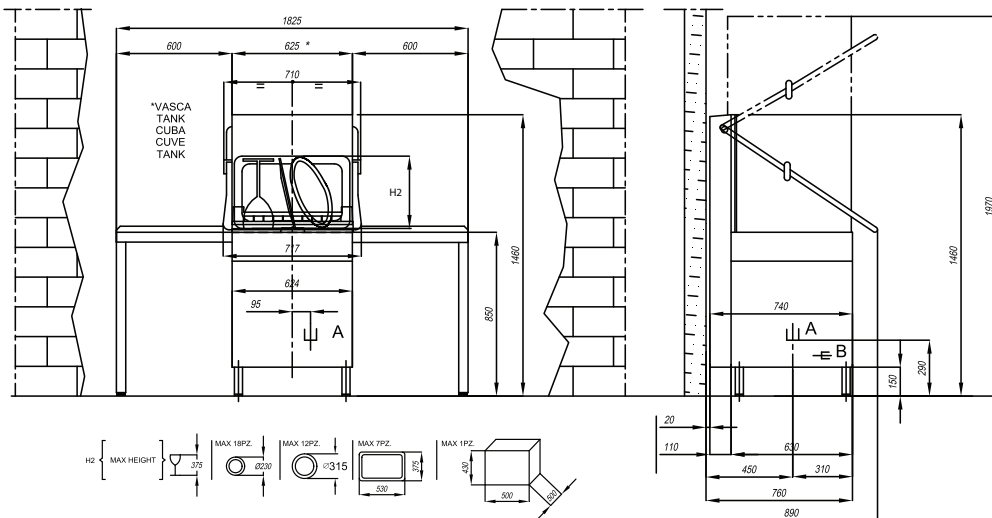
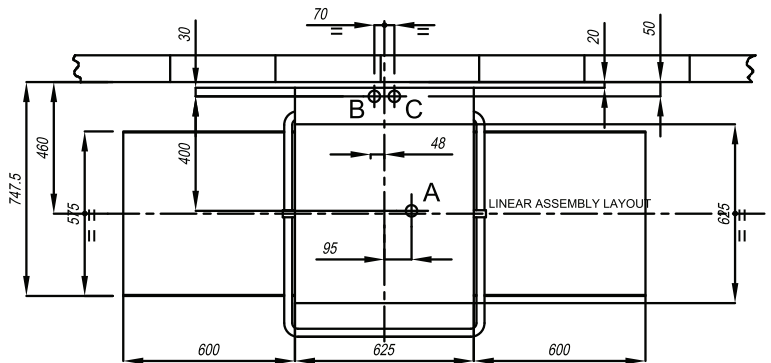
Water Consumption: 2.5L per cycle / rack

Noise: 65-67 dBA

Weight: 114 kg

Control Panel: Digital

SPECIFICATIONS ARE SUBJECT TO CHANGE WITHOUT NOTICE.



**INDUSTRY  
KITCHENS**

www.industrykitchens.com.au 1800 611 058

- A TANK DRAIN
- B WATER INLET 50/60°C - 2/4BAR
- C ELECTRICAL CONNECTION