

A heavy duty hood-type (pass through) dishwasher that is ergonomically designed and has 4 wash cycles. The Prime Line dishwasher features digital wash and rinse water temperature displays. With new WRIS2+ smart design wash and rinse integrated system reducing rinse water consumption by 25% while still providing a thorough and consistent clean.

**STANDARD FEATURES**

- Full stainless steel frame, tank and panels
- Colour coded status indicators - Green means Ready to start, Blue means cycle started, Red means alarm/check fault
- Soft start - cycle begins slowly to prevent glasses and crockery moving
- Digital temperature display
- Adjustable legs supplied standard
- 1 piece deep drawn wash tank
- Inlet and waste hoses included
- Detergent dispenser & rinse aid dispenser
- Guaranteed rinse cycle only when water reaches set temperature
- Drain pump fitted
- Micro filter on wash pump which delivers better wash results
- Accessories include: 2 peg racks, 1 flatware rack, 1 cutlery container

**DIMENSIONS**

Dishwasher: 625W x 740D x 1460H/1970 mm

Clearance: 430 mm

Rack size: 500mm x 500mm

**WASH CYCLE**

4 Cycles - Eco Fast (90 sec) / Glasses (90 sec) / Dishes (120 sec) / Intensive (240 sec)

**POWER SUPPLY**

380-415V 3N 50Hz 15A three phase (no plug supplied)

**TECHNICAL DATA**

Energy Consumption: 7.7kW

Water Temp. Supply: 45° - 55°C

Water Connection: 2-4 bar, 3/4"

Tanks Drain: 50mm

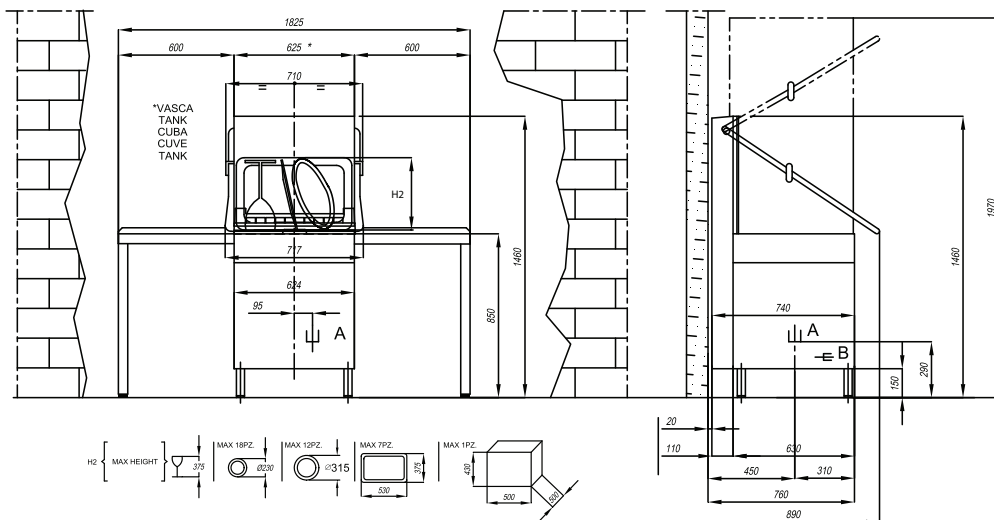
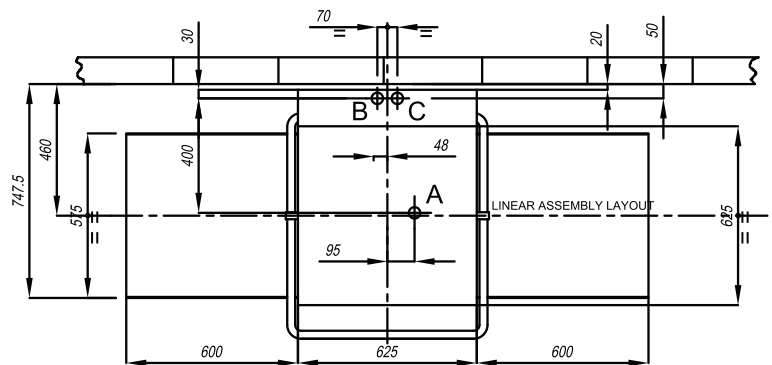
Water Consumption: 2.5L per cycle / rack

Noise: 65-67 dBA

Weight: 114 kg

Control Panel: Digital

SPECIFICATIONS ARE SUBJECT TO CHANGE WITHOUT NOTICE.



- A TANK DRAIN
- B WATER INLET 50/60°C - 2/4BAR
- C ELECTRICAL CONNECTION

**INDUSTRY  
KITCHENS**

www.industrykitchens.com.au 1800 611 058



**National Head Office**  
156 Swann Drive  
Derrimut VIC 3026  
Tel: +61 3 8369 4600  
Fax: +61 3 8369 4699

www.comcater.com.au

**Melbourne**  
96-100 Tope Street  
South Melbourne VIC 3205  
Tel: +61 3 8699 1200  
Fax: +61 3 8699 1299

**Sydney**  
20/4 Avenue of the Americas  
Newington, NSW 2127  
Tel: +61 2 8775 9500  
Fax: +61 2 9648 4762

**Brisbane**  
46-60 Dunhill Crescent,  
Morningside, QLD 4170  
Tel: +61 7 3900 2700

**Perth**  
Unit 16, 7 Abrams Street  
Balcatta, WA 6021  
Tel: +61 8 6217 0700  
Fax: +61 8 6217 0799