

A heavy duty hood-type (pass through) dishwasher that comes complete with in-built hood/heat exchanger to remove steam and hot air and reduce energy consumptions. The Prime Line dishwasher is ergonomically designed and has 4 wash cycles. Features digital wash and rinse temperature display. With new WRIS2+ smart design wash and rinse integrated system reducing rinse water consumption by 25% while still providing a thorough and consistent clean.

STANDARD FEATURES

- Full stainless steel frame, tank and panels
- Colour coded status indicators - Green means Ready to start, Blue means cycle started, Red means alarm/check fault
- Soft start - cycle begins slowly to prevent glasses and crockery moving
- Digital temperature display
- 1 piece deep drawn wash tank
- Inlet and waste hoses included
- Detergent dispenser & rinse aid dispenser
- Guaranteed rinse cycle only when water reaches set temperature
- Micro filter on wash pump which delivers better wash results
- Adjustable legs supplied standard
- Accessories include: 2 peg racks, 1 flatware rack, 1 cutlery container
- CRC — heat recovery condensing hood

OPTION

- Drain pump

DIMENSIONS

Dishwasher: 625W x 740D x 1460/2000H mm

Clearance: 430 mm

Rack size: 500mm x 500mm

WASH CYCLE

4 Cycles - Eco Fast (90 sec) / Glasses (90 sec) / Dishes (120 sec) / Intensive (240 sec)

POWER SUPPLY

380-415V 3N 50Hz 20A three phase (no plug supplied)

TECHNICAL DATA

Energy Consumption: 9.75kW

Water Temp. Supply: 20°C

Water Connection: 2-4 bar, 3/4"

Tanks Drain: 50mm

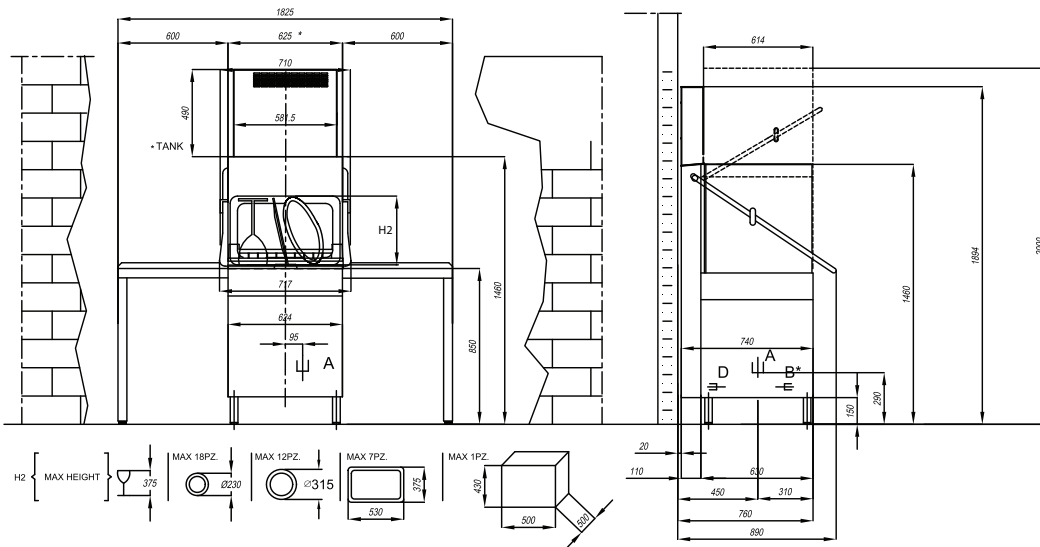
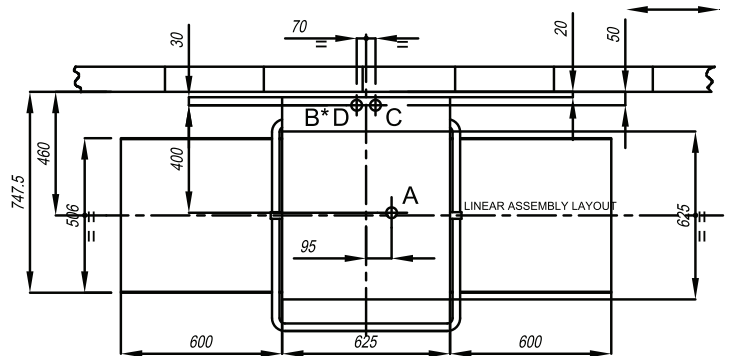
Water Consumption: 2.5L per cycle / rack

Noise: 65-67 dBA

Weight: 133 kg

Control Panel: Digital

SPECIFICATIONS ARE SUBJECT TO CHANGE WITHOUT NOTICE.

PRIME LINE PROFESSIONAL HOOD-TYPE (PASS THROUGH) DISHWASHER COMPLETE WITH CONDENSING HEAT RECOVERY HOOD


- A TANK DRAIN
- B* WATER INLET Max 50/60°C - 2/4BAR
- C ELECTRICAL CONNECTION
- D COLD WATER INLET 2/4 BAR Max 25°C
- * OPTIONAL ONLY FOR TANK

**INDUSTRY
KITCHENS**

www.industrykitchens.com.au 1800 611 058