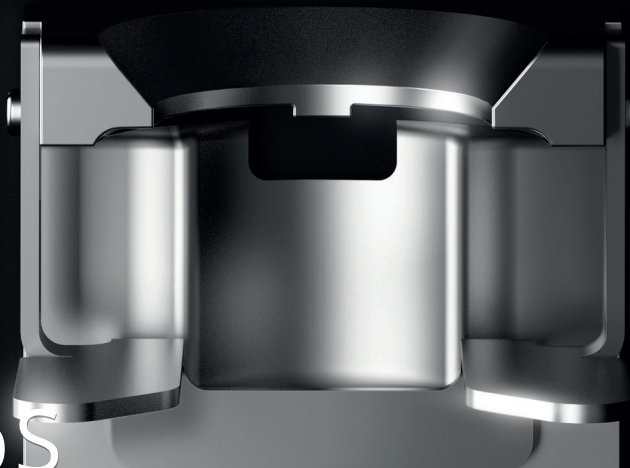


INDUSTRY
KITCHENS

www.industrykitchens.com.au 1800 611 058



ESPRESSO GRINDER

E80W GbS



E80W GbS



The E80W Grind-by-Sync (GbS) elevates the E80S Grind-by-Weight to the next level of intelligence. It is the first espresso grinder featuring the groundbreaking technology of The Sync System which seamlessly adjusts the grinder with the parameters received from the coffee machine. By combining cloud technology and smart algorithms, the technology guarantees the most consistent and repeatable quality coffee moments along all stores and shifts around the world.

The E80W Grind-by-Sync allows for direct control by the barista or, when synchronized with a coffee machine, for automatic alignment according to your target extraction time to generate the perfect shot. This means it can function as a standalone grinder or as a synced grinder.

For even more precision, Mahlkönig's well-established Disc Distance Detection (DDD) capability is enriched by an electrical motor which adjusts the gap between burrs, unlocking repeatable and precise results.

Along with the Grind-by-Sync technology, the grinder is bolstered by the intuitive Mahlkönig Sync mobile app and desktop interface. This allows you to easily setup and synchronize devices, whilst also getting valuable and in-depth data insights to monitor and manage decision-making process remotely and locally in all your stores.

Take the next step in grinding and enter the world of unmatched speed and consistency - with the E80W Grind-by-Sync.

TECHNICAL DETAILS

Voltage // frequencies // phases // nominal power	220-240 V // 50/60 Hz // 1~ // 520/600 W 110-127 V // 60 Hz // 1~ // 845 W 100 V // 50/60 Hz // 1~ // 620/780 W
---	---

Idle speed	1400 rpm (50 Hz) 1700 rpm (60 Hz)
------------	--------------------------------------

Burr diameter	80 mm
---------------	-------

Burr material	Special steel
---------------	---------------

Average grinding capacity*	50 Hz: 6-7 g/s @ 250 µm 60 Hz: 7-8 g/s @ 250 µm
----------------------------	--

Burr grind life (median setting):	approx. 1500 kg
-----------------------------------	-----------------

Bean hopper capacity	approx. 1800 g
----------------------	----------------

Dimensions (w x h x d)	24 x 63 x 34 cm
------------------------	-----------------

Dimensions of packing (w x h x d)	69.7 x 28.7 x 47.5 cm
-----------------------------------	-----------------------

Net weight	18 kg
------------	-------

Gross weight	19.8 kg
--------------	---------

Certifications	CE, CB, ETL Safety, ETL Sanitation
----------------	------------------------------------

Standards	Conforms to IEC/EN 60335-1 IEC/EN 60335-2-64 Certified to UL 763 CSA C22.2 No. 195 NSF/ANSI 8
-----------	---

Standard colors (Other colors on request)	Polished aluminum, matte black Polished aluminum, matte black & white
---	--

OPTIONAL ACCESSORIES

Bean hopper approx. 250 g
Bean hopper approx. 1200 g
80 mm premium cast steel burrs
Burr replacement tool
Calibration weight 1 kg
CB-certified aluminum adapter for Cans

KEY FEATURES

- Grind-by-Sync cloud technology enabling intelligent synchronization between grinder and coffee machine for repeatable and consistent coffee quality
- Mahlkönig Sync mobile app for easy setup of grind-brew-synchronization and monitoring of selected grind-brew events
- Mahlkönig Sync desktop app giving valuable in-depth data insights to monitor and manage decision-making processes remotely and locally
- High-precision and micrometric adjustment of the gap between burrs with an electric motor
- Grind-by-Weight technology featuring a high-precision load cell for real-time dosing control during grinding process
- Patented Disc Distance Detection (DDD) enabling accurate settings of the degree of fineness
- Time savings and quality assurance through integrated Portafilter Detection
- 80 mm diameter special steel burrs
- Powerful motor with active temperature control for high-speed performance
- Adjustable illuminated spout providing a clean and centered coffee outlet
- Pleasantly quiet grinding
- High-resolution 88.3 mm display with a wide viewing angle

