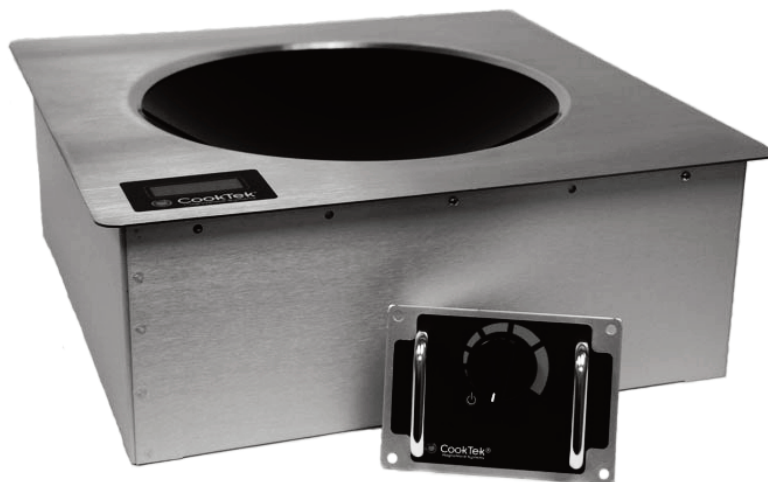


Product Name	Drop-In Induction Wok	Quantity	Item #
--------------	-----------------------	----------	--------



Note: Induction cooking requires the use of induction compatible (i.e. magnetic) pots and pans.



## Standard Features

- Drop-in design with stainless steel top, aluminum housing and control box, heavy duty electronic components, and specially engineered, high-impact, high-temperature recessed glass-ceramic wok bowl designed for use in commercial kitchens
- Pan Maximizer feature and an induction coil that surrounds glass-ceramic bowl allow for maximum heating of induction compatible wok pans
- Control knob for ease of use and automatic power control
- Equipped with 20 power cook settings
- Microprocessor monitors vital components 120 times per second to check for overheating, power supply problems, and more. Wok unit shuts off and displays error codes enabling user to diagnose and correct minor problems
- LED display for precise user feedback
- Automatic pan detection allows for instant energy transmission to pan, and almost no energy consumption when pan is not present
- Automatic shut-off feature prohibits overheating
- Drop-in wok units and control boxes engineered and designed for easy installation
- Easy to clean glass-ceramic bowl
- Integral cooling fan keeps internal electronics cool
- Available in 2500 and 3500 watts (200-240VAC)

- 14" stainless steel induction compatible wok pan available as an accessory
- Three years parts and one year labour warranty
- Made in the USA\*

## Specifications

Shall be a CookTek drop-in induction wok, model \_\_\_\_\_ with a total kW rating of \_\_\_\_\_.

Unit shall be manufactured in the United States and constructed of a stainless steel housing, aluminum control box, and a specially engineered, high-impact, high-temperature recessed glass-ceramic wok bowl.

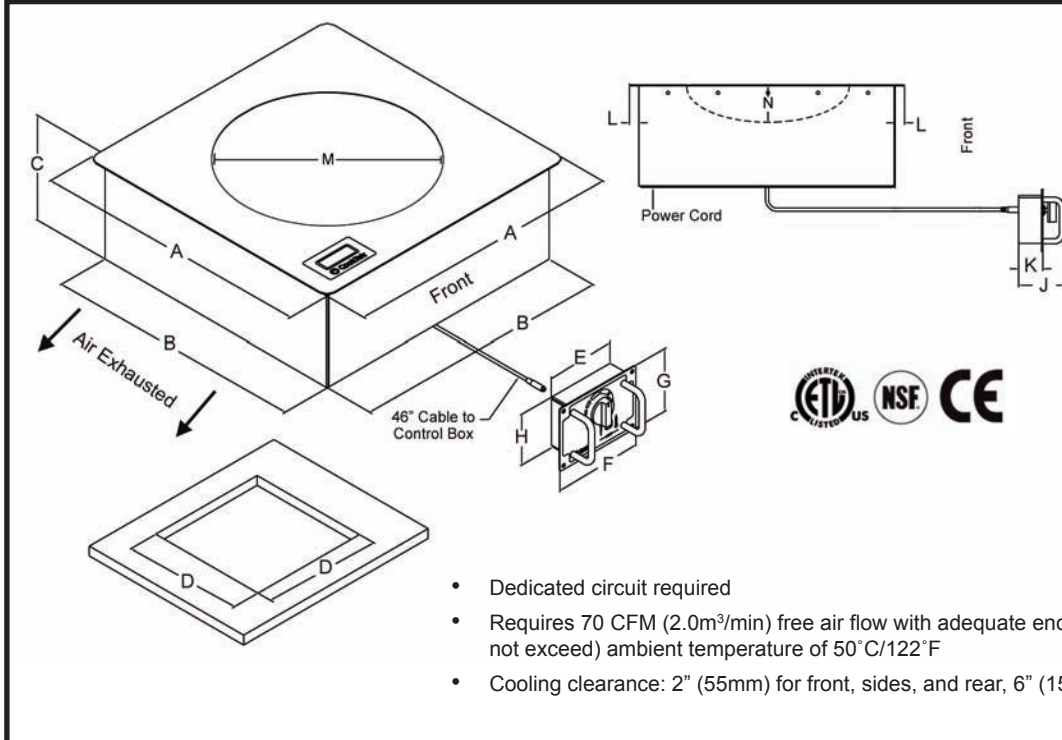
Unit shall be equipped with a microprocessor that performs auto shut-off to prevent overheating, self-diagnostics, and a pan maximizer feature that ensures maximum heating of induction compatible wok pans.

Unit shall have LED display for precise user feedback.

Unit shall have adjustable knob control with 20 power cook settings.

Unit shall operate on \_\_\_\_\_ power with integral \_\_\_\_\_ cord and plug (supplied).

\*of USA and imported parts



Dimensions		
	inches	mm
A	16.50	419
B	15.38	390
C	6.15	156
D	15.75	400
E	4.12	104
F	5.25	133
G	3.75	95
H	3.00	76
J	2.75	69
K	1.44	36
L	0.56	14
M	11.75	298
N	2.00	50

- Dedicated circuit required
- Requires 70 CFM (2.0m³/min) free air flow with adequate enclosure venting and maximum (do not exceed) ambient temperature of 50°C/122°F
- Cooling clearance: 2" (55mm) for front, sides, and rear, 6" (152mm) below

Specifications			
Model Number	MWDG2500		MWDG3500
Power Requirements	200-240VAC, 1Ph		200-240VAC, 1Ph
Power Consumption	2400W (max)		3500W (max)
BTU Comparison	22,000 BTU		31,000 BTU
Voltage	200-240VAC, 50/60 Hz		200-240VAC, 50/60 Hz
Amperage	10A (max)		15A (max)
Power Range	100-2400W		100-3500W
Dimensions (in)	16.50" x 16.50" x 6.15"		16.50" x 16.50" x 6.15"
Dimensions (mm)	419 x 419 x 156		419 x 419 x 156
Cutout Dimensions (in)	15.75" x 15.75"		15.75" x 15.75"
Cutout Dimensions (mm)	400 x 400		400 x 400
Weight	21.5 lbs / 9.75 kg		21.5 lbs / 9.75 kg
Packaged Weight	23 lbs / 10.4 kg		23 lbs / 10.4 kg
Packaged Dimensions (in)	24" x 23" x 13"		24" x 23" x 13"
Packaged Dimensions (mm)	609 x 584 x 330		609 x 584 x 330
Power Cord Length	6 ft / 1.8 m		6 ft / 1.8 m
Plug Type	Country Specific		Country Specific
Remote Control Box Cord Length	46 in / 1.2 m		46 in / 1.2 m
Warranty	3 years parts and one year labour		