

WD-100GRT GRANULE POT WASHER – THROUGH LOADED

STANDARD FEATURES:

- Through loaded pot washer with granule technology
- Separation of clean and dirty items
- 90 GN 1/1 containers per hour capacity (including handling)
- 4 to 6 litres per cycle cold water consumption
- 6 levels of wash cycle for varying types of soiled product
- 2 x 2.2kW wash pump with 9kW booster pump
- Centrifugal spin cycle for fast drying
- Fast heat recovery system
- Patented dual pump system incorporating granule technology
- 10 litres granule capacity
- Electronic control panel with clear display on wash information
- HACCP function
- Configuration with loading bench and trolley allows for 2 cassettes to be in operation and increases the effective washing time and ergonomic flow system
- Includes 1 x transportation trolley, 2 x cassette 3 x lid holders, 4 x side holders, 3 x short guides, 1 x long guide

Upgrades and options are available, please contact Moffat for more details

TECHNICAL INFORMATION:

Dimensions

Width: 1051mm
Depth: 1190mm
Height: 2155mm

Water

Hot water temperature: 55-70°C
Hot water connection: R $\frac{1}{2}$ "
Hot water pressure: 250kPa
Cold water temperature: 5-12°C
Cold water connection: R $\frac{1}{2}$ "
Cold water pressure: 200kPa
Flow: 18 litres per min
Water quality (Hardness): 2-7odH

Waste

Connection: 50mm dia direct

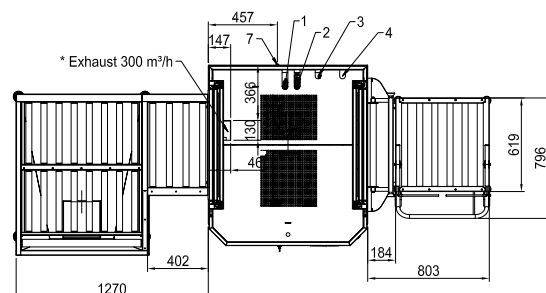
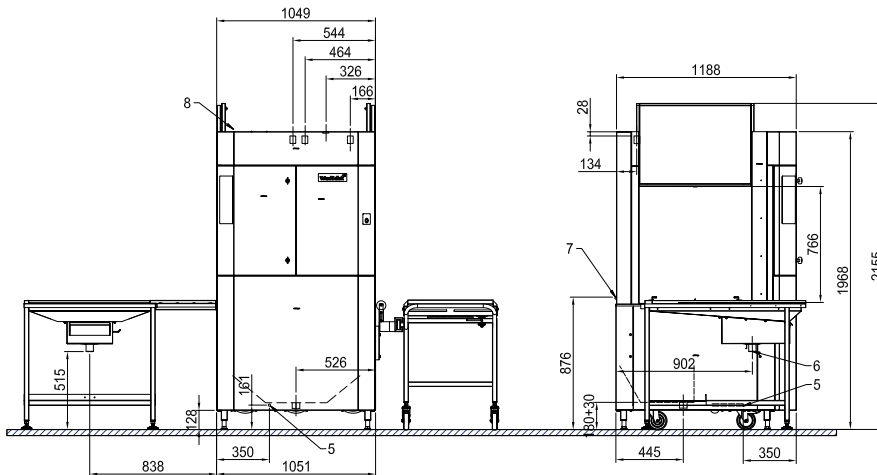
Electrical

3P+N+E 400-415V 50/60Hz
21kW 35A

Steam Heated

3P+N+E 400-415V 50/60Hz
4.8kW 16A

Refer operator manual for complete installation instructions



1. Cold water connection 5-12°C, 250-500kPa, R 3/4" internal thread
2. Hot water connection 55-70°C, 250-500 kPa R 3/4" internal thread
3. Electrical connection: Electrical heated 400V 3N 21kW 35A
Steam heated 400V 3N 4.8kW 16A
4. Steam connection 50-250kPa R 1" internal thread, 30kg/h
5. Condensate water connection 90-95°, R1/2" internal thread
6. Drain connection 50 mm
7. Connection for detergent hose
8. General ventilation requirements 900m³/h
* 10 sec. at the beginning of the wash cycle and 50 sec. starting 10 sec. after the final rinse starts

Australia

moffat.com.au

Moffat Pty Limited
740 Springvale Road
Mulgrave
Victoria 3170
Australia
Telephone +613-9518 3888
Facsimile +613-9518 3833
vsales@moffat.com.au

New Zealand

moffat.co.nz

Moffat Limited
45 Illinois Drive
Izone Business Hub
Rolleston 7675
New Zealand
Telephone +64 3-983 6600
Facsimile +64 3-983 6660
sales@moffat.co.nz

In line with policy to continually develop and improve its products, Moffat Limited reserves the right to change specifications and design without notice.