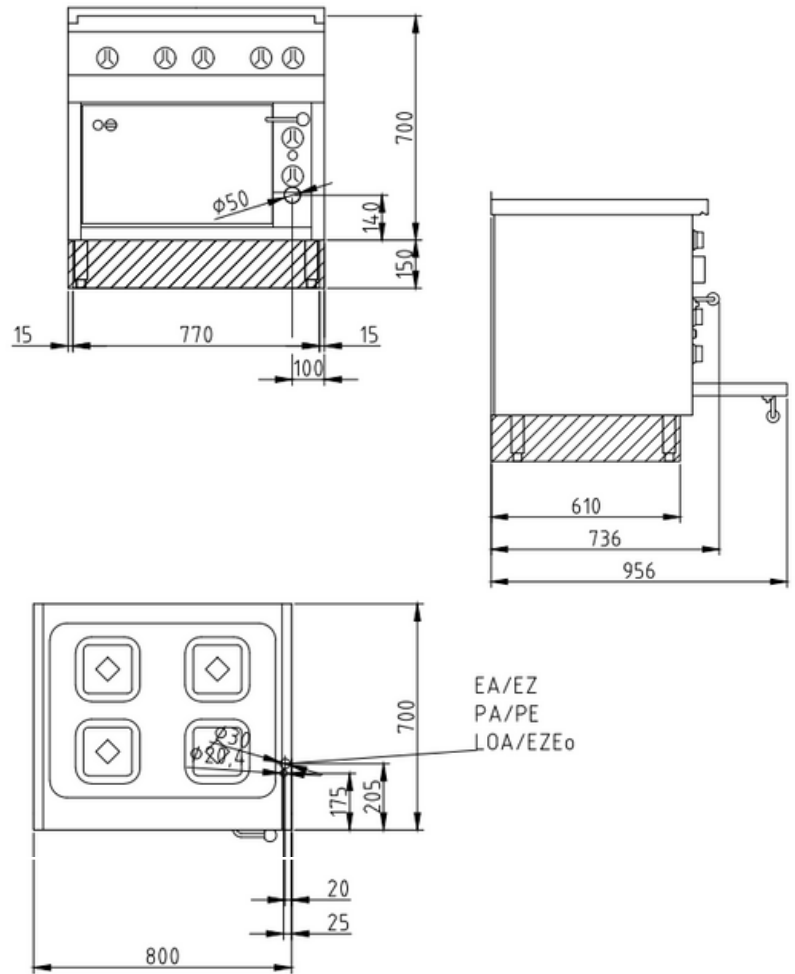


Product Advantages:

- Oven door smooth on inside and outside, with vapour extractor.
- Interior chamber has large inside radii which are easy to clean.
- Completely wired internally.
- Appliance feet are adjustable in height.
- Housing made completely of stainless steel.
- Handle is on the side, away from the area where heat escapes from the oven chamber.
- Protection against overheating by automatic power resetting.
- Infinitely variable temperature control for each cooking zone.

Installation requirements:

- Electrical power provided by customer.



Technical Data:

| | |
|-------------------------------|--------------------|
| Width x Height x Depth (mm) | 800 x 700 x 700 mm |
| Effective area | 4 |
| Dim.: effect. Area (mm) | 700 x 540 |
| Connected load (elect.) (kW): | 13,75 |
| Voltage (V) / EC: | 415 3 phase AC |
| Recommended fuses (A): | 3 x 32 |
| Net weight (kg): | 110 |
| Gross weight (kg): | 119 |
| Heat emission latent (W): | 1464 |
| Heat emission sensitive (W): | 3432 |
| Type of protection: | IPX5 |

