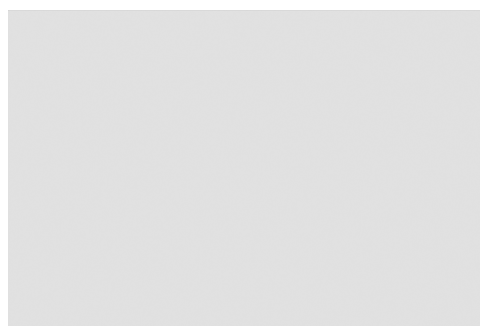
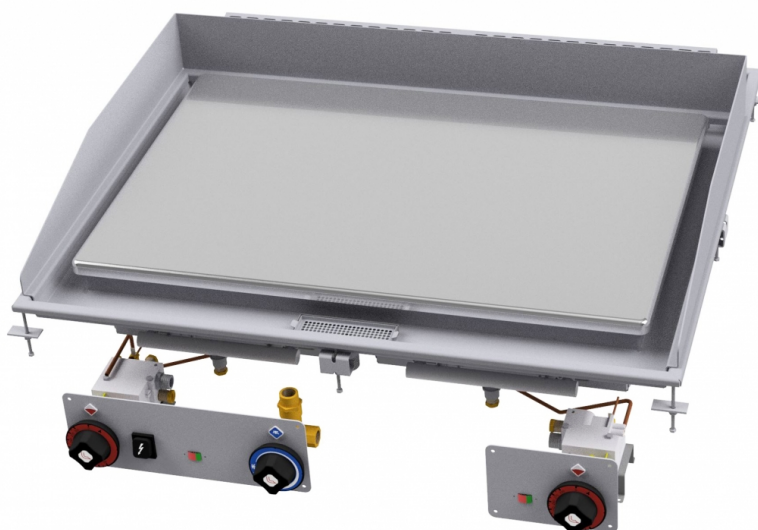


# FTLD-99GS

GAS FREELOTUS

GAS GRIDDLE 90

Gas Fry-top smooth chromed griddle  
SUPERCHROME (Moca Approved), plate  
cm.79x68,5 - 2 cooking areas. Electric  
ignition, flame presence indicator, floodable  
perimeter channel, drain with removable  
filter.



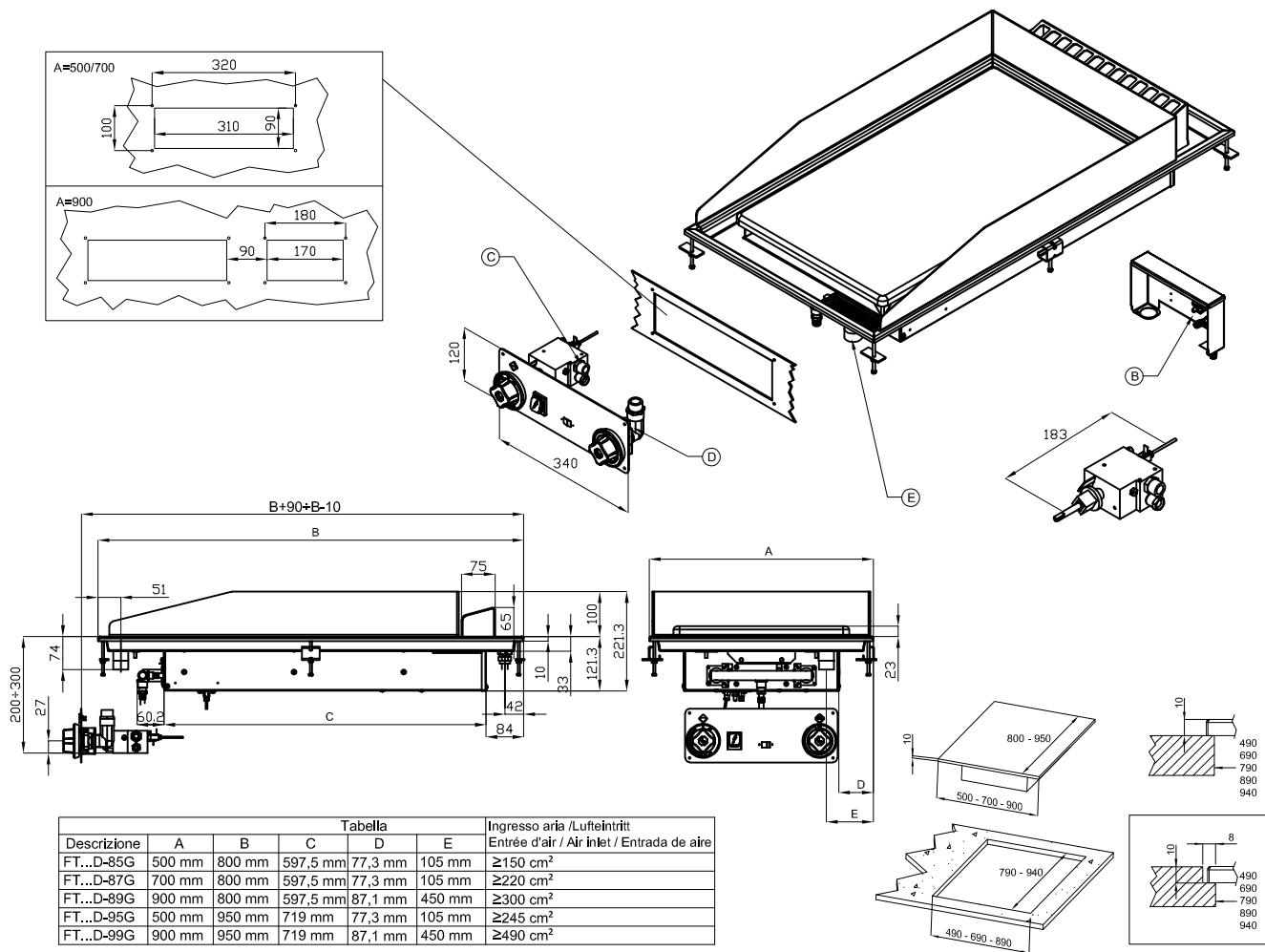
ITALIAN CULINARY ART

The pictures are purely representative. The manufacturer reserves the right to modify the technical data and models without previous notice.

# FTLD-99GS

GAS FREELOTUS

GAS GRDDLE 90



A	Data plate		B	Electrical connection	
C	Gas connection	ISO 7-1 1/2" M	D	Cold water connection	ISO 7-1 1/2" F
E	Water drainage	ISO 7-1 1" M			

**MODEL:** FTLD-99GS  
**DIMENSIONS:** cm. 90x 95x 33h  
**GAS POWER:** 18 kW / 15.480 kcal/h  
**GAS TYPE:** Natural Gas / LPG  
**ELECTRIC POWER:** 0,01 KW  
**VOLTAGE:** 230V~  
**FREQUENCY:** 50/60 Hz



**kg:** 102  
**m<sup>3</sup>:** 0.644  
**mm:** 1230x970x540

BUY LOTUS BUY ITALY

The pictures are purely representative. The manufacturer reserves the right to modify the technical data and models without previous notice.



LOTUS S.P.A. Via Calmaor, 46  
 31020 San Vendemiano (TV) - Italy  
 Tel. + 39 0438 778020 / 778468  
 Fax + 39 0438 778277  
[www.lotuscookers.it](http://www.lotuscookers.it) - [lotus@lotuscookers.it](mailto:lotus@lotuscookers.it)