

# DATA SHEET

## Lotus RSFT-73EM Electric Top Mounted Press Accessory to Electric Hotplates

18630317

70-SERIES



ITALIAN CULINARY ART

### Build

- Heavy-duty construction made from premium CrNi 18/10 AISI 304 stainless steel with Scotch-Brite satin finish. It features a 2mm thick worktop, rounded edges, chrome details, and a rear splashback.
- Waterproof chromed knobs with an IPX5 waterproof rating
- Powerful 2.9 kW high-efficiency elements deliver rapid heating when pressed increasing cooking time and consistency when used in conjunction with a lotus hotplate.
- Precise thermostatic control maintains independent working temperature of the top plate between 50°C and 230°C.
- Equipped with ergonomic heat-insulated handle, 2 adjustable springs allow a fluid movement and a perfect balance in every position, for more security.
- Designed for easy maintenance and serviceability, with all parts accessible by the easy removal of superior panel.



### Technical specifications

#### External Size

External Width	320mm
External Depth	620mm
External Height	410mm

#### Weight

Net weight	
Package weight	20kg

#### Technical Features

Element Power	2.9 kW
Temperature	50°C - 300°C
Plate Size	29cm x 40cm

#### Connection requirements electric

Electrical connected loads	2.9 kW
Voltage	230V~
Plug Supplied	No

#### Warranty

2 Year Warranty	2 years parts and labour
-----------------	--------------------------

*\*Subject to a preventative maintenance plan*

# DATA SHEET

## Lotus RSFT-73EM Electric Top Mounted Press Accessory to Electric Hotplates

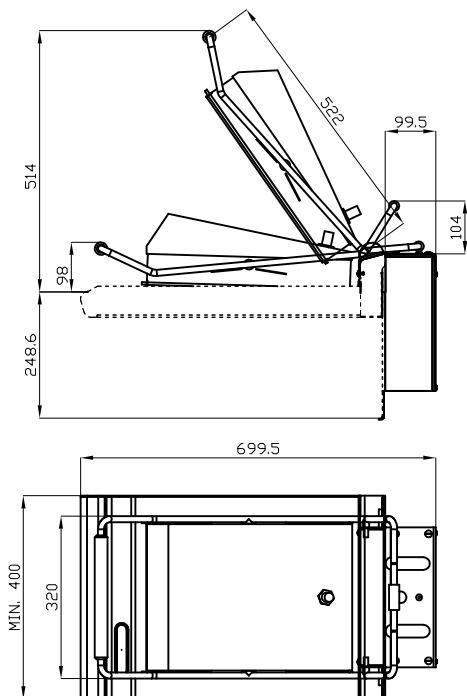
18630317

70-SERIES

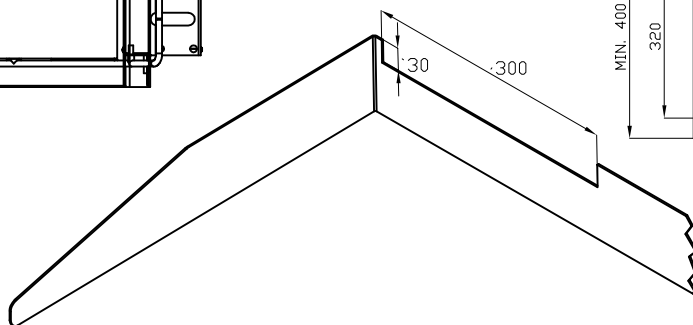
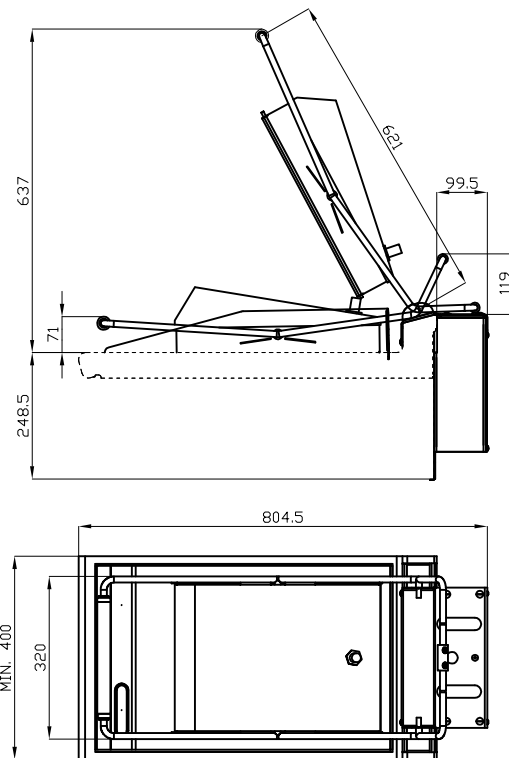


ITALIAN CULINARY ART

RSFT-63EM



RSFT-73EM



A	Data plate
B	Electrical connection

We reserve the right to alter specifications without notice.



1800 183 818

support@thegoodlady.com.au

www.thegoodlady.com.au