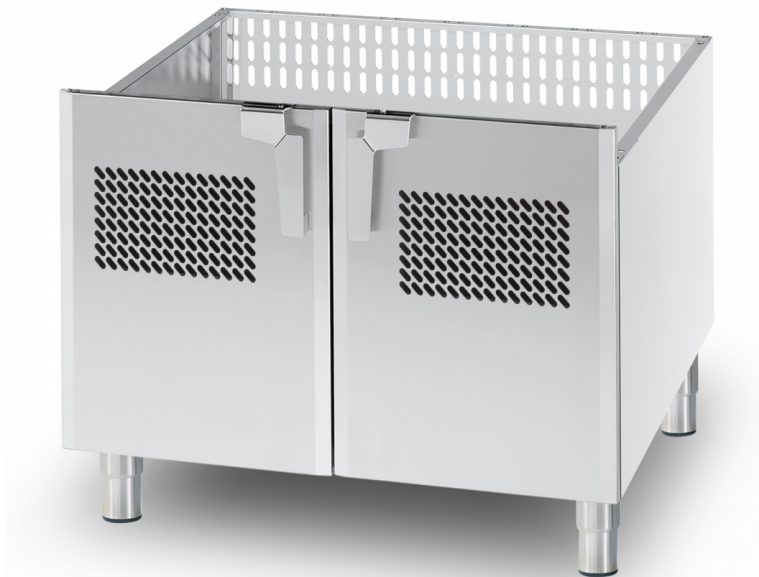


# MPI-98

## 90 IPERLOTUS TOP STAND

Stand with door for induction top



Construction - Fabricated using CrNi 18/10 AISI 304 grade Stainless Steel Scotch-Brite Satin polish Finish, rounded edges and chromed details.  
Model - Professional Stand for Induction and Worktop Units. Fittings - Appliance is supplied with adjustable feet, Doors not Included, except for Induction Unit top.

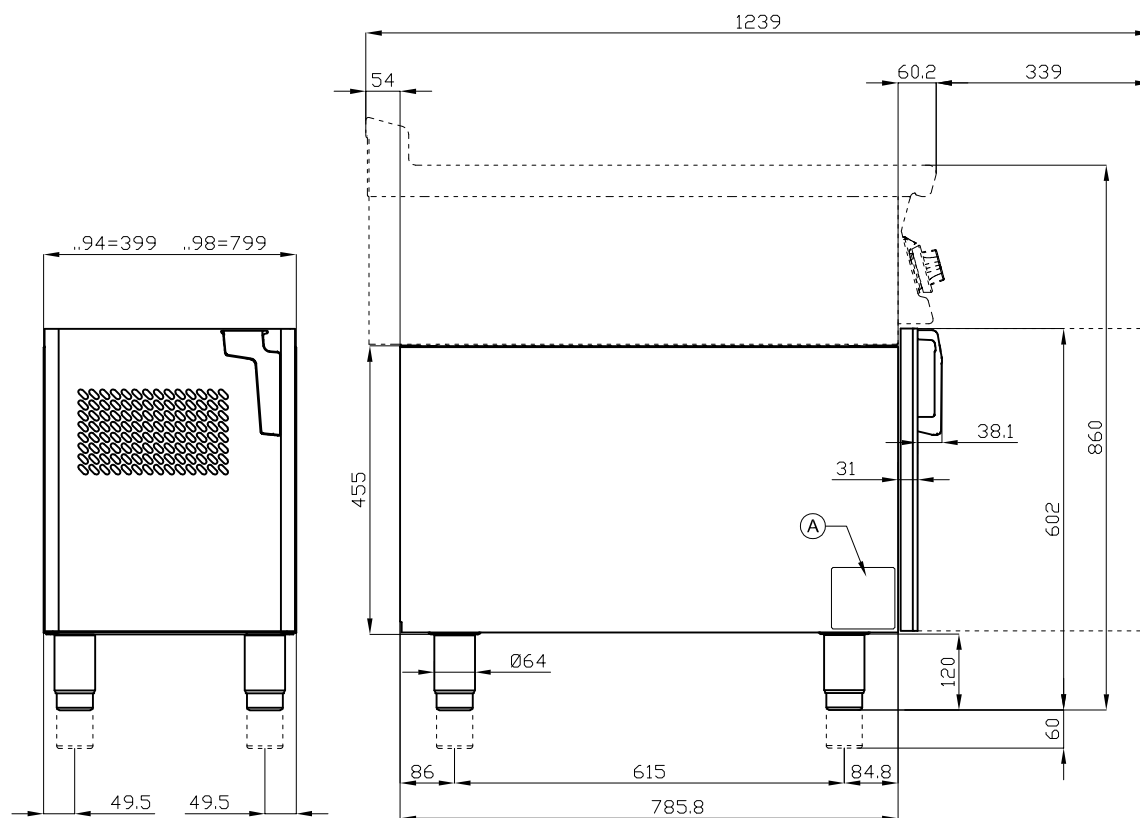


ITALIAN CULINARY ART

The pictures are purely representative. The manufacturer reserves the right to modify the technical data and models without previous notice.

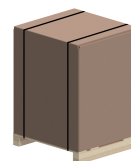
# MPI-98

## 90 IPERLOTUS TOP STAND



A	Data plate				
---	------------	--	--	--	--

MODEL: MPI-98  
DIMENSIONS: cm. 80x 81x 57h



kg: 29  
m<sup>3</sup>: 0.507  
mm: 830x970x630

BUY LOTUS BUY ITALY

The pictures are purely representative. The manufacturer reserves the right to modify the technical data and models without previous notice.



LOTUS S.P.A. Via Calmaor, 46  
31020 San Vendemiano (TV) - Italy  
Tel. + 39 0438 778020 / 778468  
Fax + 39 0438 778277  
www.lotuscookers.it - lotus@lotuscookers.it