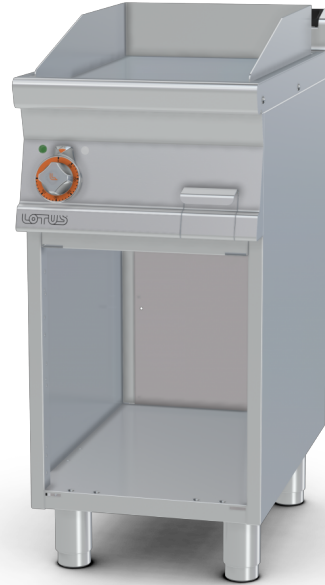


# FTL-74ETS

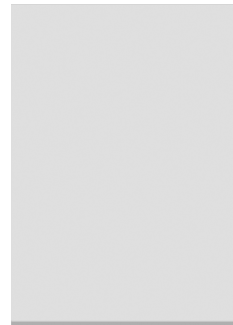
## 70 SUPERLOTUS ELECTRIC GRIDDLE



Electric Fry-top smooth chromed griddle  
SUPERCHROME (Moca Approved), on open  
cabinet, plate cm.36x51 (included 1 Head  
end filler strip mod.TPA-7)



Construction -Fabricated using CrNi 18/10 AISI 304 grade Stainless Steel  
Scotch-Brite Satin polish Finish, incorporating 2 mm thick worktop,  
rounded edges, chromed details and rear splash back. Knobs with  
waterproof grades IPX5. Model - Professional Electric Griddle, Smooth,  
Ribbed or 50 / 50, Normal or Chrome, on open cabinet. Normal Plate in  
FE430B Steel and Chrome in FE510C Steel. Double thermostat, operating  
and safety. High durability and rapid heat up. 50 - 300degC control,  
Removable liquid containers. Maintenance - All serviceable parts are  
accessible by the easy removal of front control panel. Fittings - Appliance  
is supplied with adjustable feet. Doors not included.

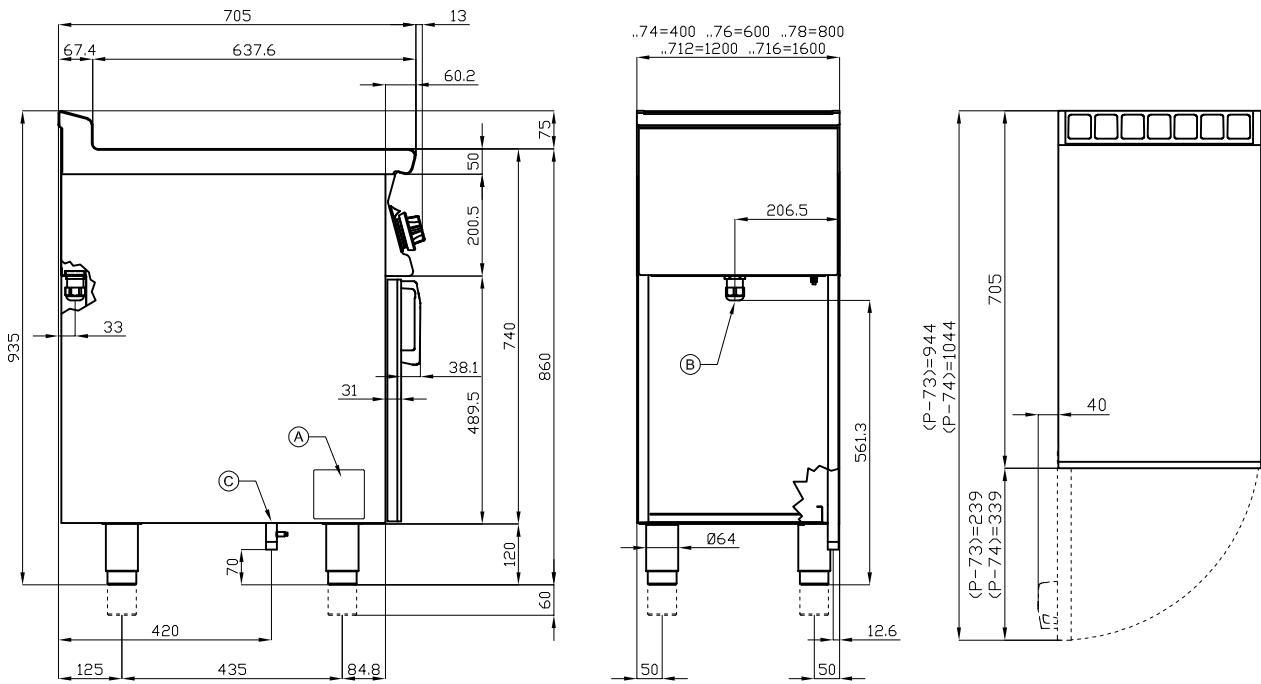


ITALIAN CULINARY ART

The pictures are purely representative. The manufacturer reserves the right to modify the technical data and models without previous notice.

# FTL-74ETS

70 SUPERLOTUS  
ELECTRIC GRIDDLE



A	Data plate	B	Electrical connection
---	------------	---	-----------------------

MODEL: FTL-74ETS  
 DIMENSIONS: cm. 40x 70,5x 90h  
 ELECTRIC POWER: 5,55 kW  
 VOLTAGE: 400V~3N / 230V~3  
 FREQUENCY: 50/60 Hz



kg: 64  
 m<sup>3</sup>: 0.368  
 mm: 430x770x1110

BUY LOTUS BUY ITALY

The pictures are purely representative. The manufacturer reserves the right to modify the technical data and models without previous notice.



LOTUS S.P.A. Via Calmaor, 46  
 31020 San Vendemiano(TV) - Italy  
 Tel. + 39 0438 778020 / 778468  
 Fax + 39 0438 778277  
 www.lotuscookers.it - lotus@lotuscookers.it