

# PCQ-712ET

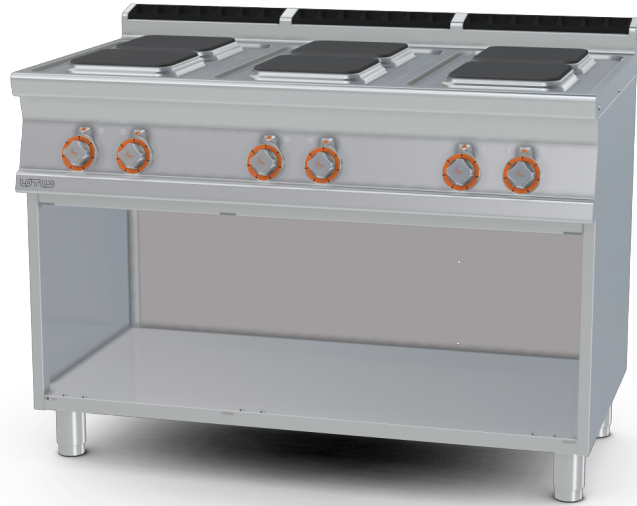
70 SUPERLOTUS

ELECTRIC BOILING UNIT

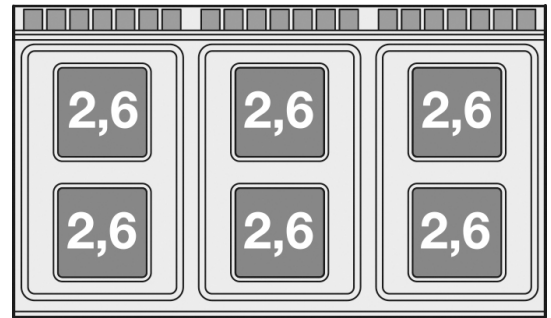


View 3D

Boiling unit threephase on open cabinet - N.  
6 square plates (included 1 Head end filler  
strip mod.TPA-7)



**Construction** -Fabricated using CrNi 18/10 AISI 304 grade Stainless Steel Scotch-Brite Satin polish Finish, incorporating 2 mm thick worktop, rounded edges, chromed details and rear splash back. Knobs with waterproof grades IPX5. **Model** - Professional Electric Boiling Hob on open cabinet. Cast Iron square or round hot plates with steel border seals, seven position switch and temperature limiter. Ceramic glass tops with radiant heat hot plates and warning lights for residual heat. **Maintenance** - All serviceable parts are accessible by the easy removal of front control panel. **Fittings** - Appliance is supplied with adjustable feet. Doors not included

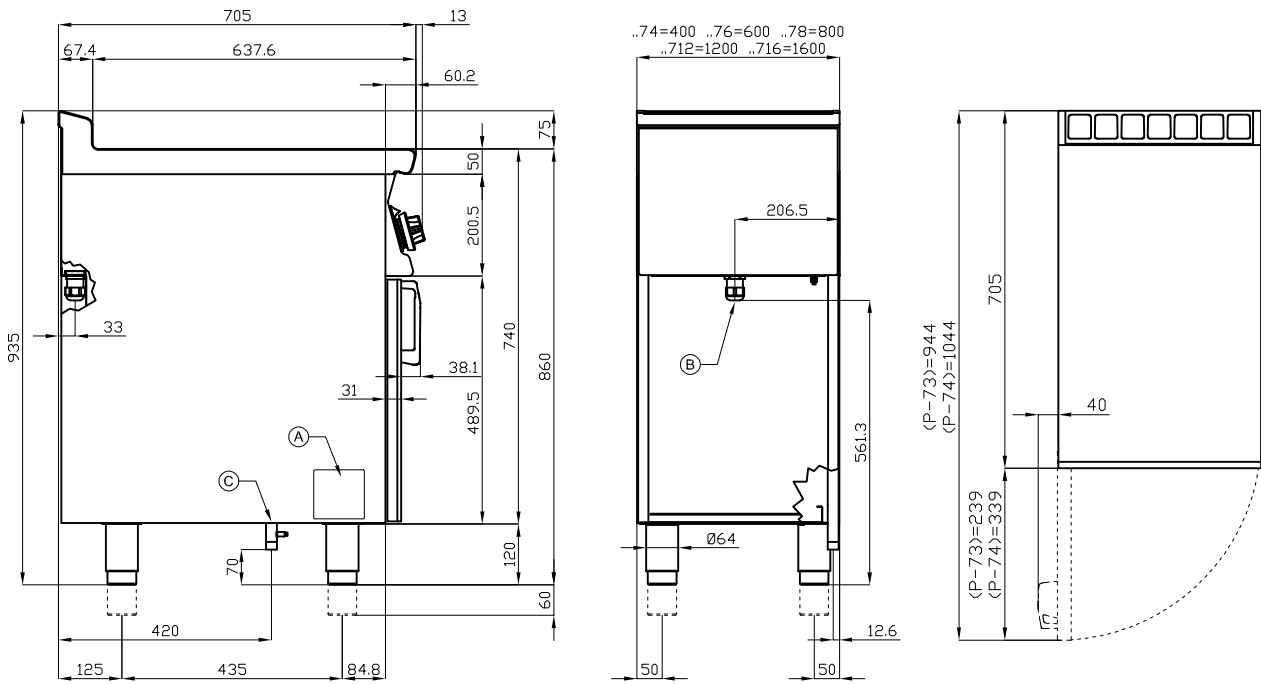


ITALIAN CULINARY ART

The pictures are purely representative. The manufacturer reserves the right to modify the technical data and models without previous notice.

# PCQ-712ET

70 SUPERLOTUS  
ELECTRIC BOILING UNIT



A	Data plate		B	Electrical connection	
---	------------	--	---	-----------------------	--

MODEL: PCQ-712ET  
DIMENSIONS: cm. 120x 70,5x 90h  
ELECTRIC POWER: 15,6 kW  
VOLTAGE: 400V~3N / 230V~3  
FREQUENCY: 50/60 Hz



kg: 103  
m<sup>3</sup>: 1.051  
mm: 1230x770x1110

BUY LOTUS BUY ITALY

The pictures are purely representative. The manufacturer reserves the right to modify the technical data and models without previous notice.



LOTUS S.P.A. Via Calmaor, 46  
31020 San Vendemiano(TV) - Italy  
Tel. + 39 0438 778020 / 778468  
Fax + 39 0438 778277  
www.lotuscookers.it - lotus@lotuscookers.it