

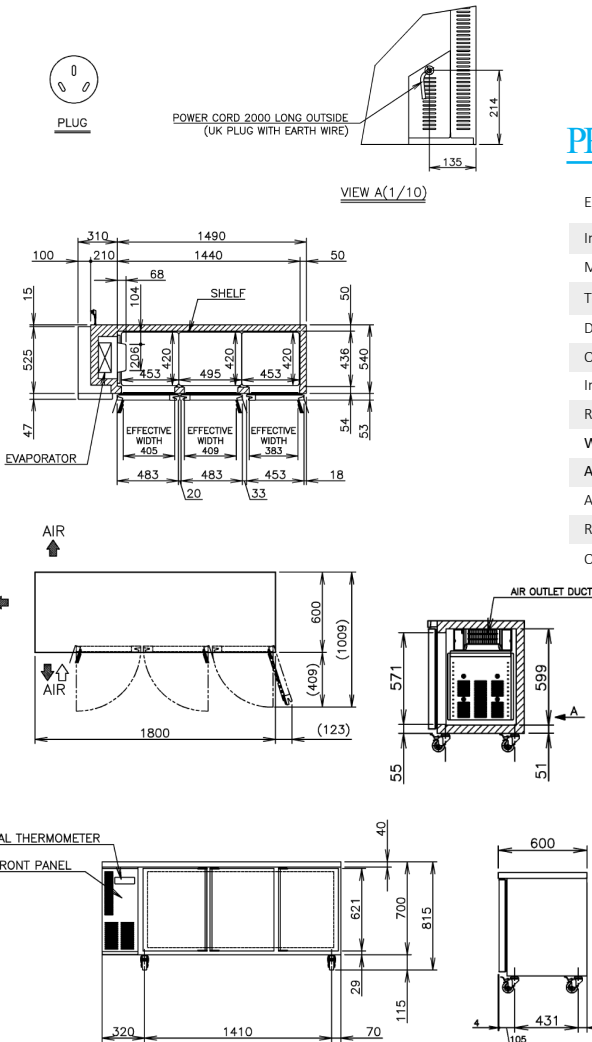


PRODUCT FEATURES

- Complete with stainless steel top.
- Standard with 6 shelves and 3 doors.
- Programmable electronic controller and display.
- 2 years parts and labour warranty.
- Comes standard with 4 x lockable (115 mm) castors (not legs).
- Optional Adjustable legs 150 – 180mm (Sold separately).



TECHNICAL DRAWING



PRODUCT SPECIFICATION

Exterior	Stainless Steel, Galvanized Steel (Rear/Bottom)
Interior	Stainless Steel, ABS Plastic
Max Storage Capacity	401L
Temperature Control	Microprocessor controlled Adjustable from -6 to -12°C
Drain Evaporator Pan	Fin & Tube type
Outside Dimensions	1800mm (W) x 600mm (D) x 815mm (H)
Inside Dimensions	1440mm (W) x 436mm (D) x 599mm (H)
Refrigeration System	Forced Air Circulation
Weight Net	93kg
AC Supply Voltage	1 PHASE 220-240V 50Hz /10amp Plug
Amperage	Rated: 2.1A
Refrigerant	R134A
Operating Conditions	Ambient Temp.: 5-38°C Voltage Range: Rated Voltage ±6%



For free 6 month extended warranty, register online within 4 weeks of purchase date.
hoshizaki.com.au

