

Automatic rack type dishwasher, capacity up to 300 racks, 5,400 plates or 10,800 glasses per hour.

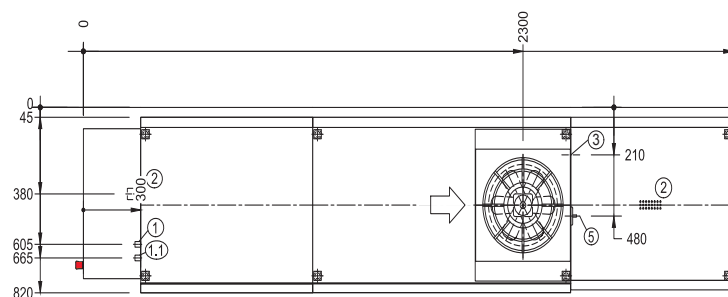
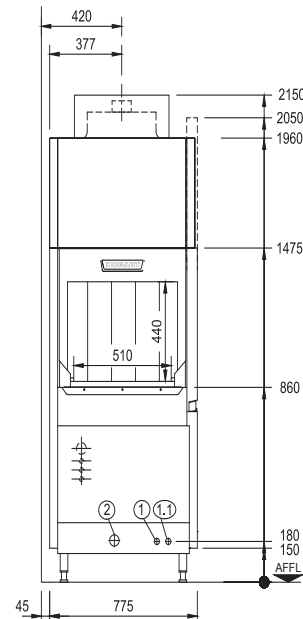
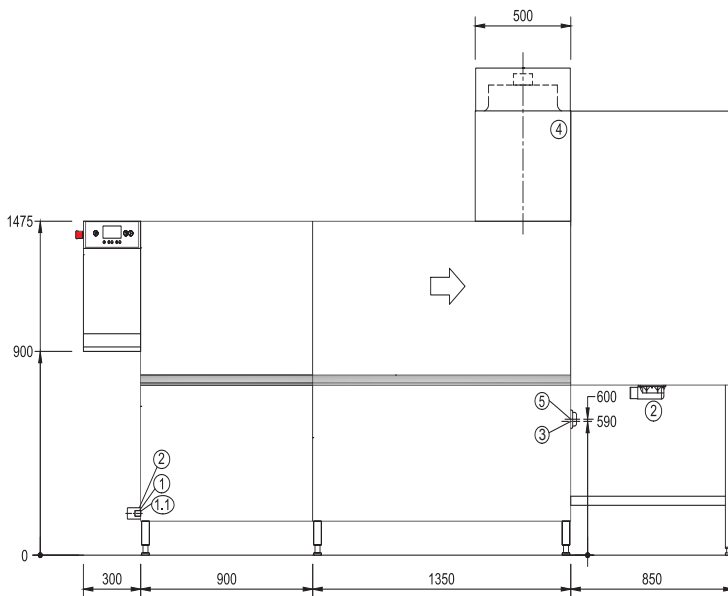
Product Advantages:

- INFOTRONIC clear text colour touch screen control
- High performance "S" prewash with 1.8kW wash pump
- 1.8kW stainless steel main wash tank pump
- C20 heat recovery system to minimise energy consumption and operating costs
- Low 160L per hour triple rinse with rinse pump to guarantee rinse volume
- AUTOMATIC SOIL REMOVAL (ASR) - less manual handling, less dumping & re-filling, higher throughput
- Autotimer for efficient time saving operation
- 100% hygiene deep drawn stainless steel wash tank with stainless steel tank strainer system
- Door insulation included for improved work environment & lower operating costs
- Efficient 3-speed operation (130/200/300 racks/hr)
- Includes emergency stop and main switch
- Wash-rinse actuator to ensure economic operation
- New washarms without end caps



Connections mirrorwise for R/L working direction

Machine shown with optional CDS-90-15 dryer.



1	fresh water connection, soft	R 3/4" 0 - 3°d, (0,5mmol/l); max. 160 l/h, demineralized water blended to have appr. 80 µs/cm
1.1	hot water connection for separate tank fill (option)	R 3/4" 0 - 3°d; (1,4mmol/l)
2	drain	DN 50
3	power supply	without dryer - 28.4kW with dryer - 33.72kW
4	Ventilation / vent. condition	appr. 280 m³/h, 25-28°C, 2,7 g/m³ humidity
5	main switch	

Table height 900mm
Machine height +/- 25mm feet adjustable