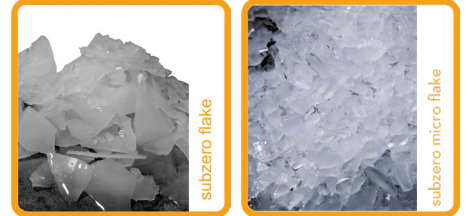


PB-F-FZ/Y & MB-F-FZ/Y Series

Self-Contained Sub-Zero Flake and Sub-Zero Micro Flake Ice Machines

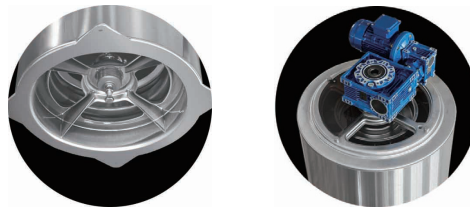


PB-F-FZ/Y
&
MB-F-FZ/Y
Series

FEATURES

- Ice Production: up to 300kg per 24 hours.
- Ice Storage: 150kg
- Energy efficient D-Shaped stainless steel coil has been designed to improve refrigerant flow and reduce resistance.
- All 304 stainless steel evaporators and surrounds.
- Easy to use digital display control panel.
- Easy to clean and maintain.
- Suitable for both presentation and preservation of perishable food items, fresh ice displays, fisheries and seafood markets.

Warranty: 3 years parts & labour, and 5 years on evaporator.



Full Stainless Steel Flake Ice Evaporator

ACCESSORIES

| WATER FILTERS | |
|---------------|-------------------|
| SYSTEM | REPLACEMENT |
| CD40B | CD2020B CD250B |

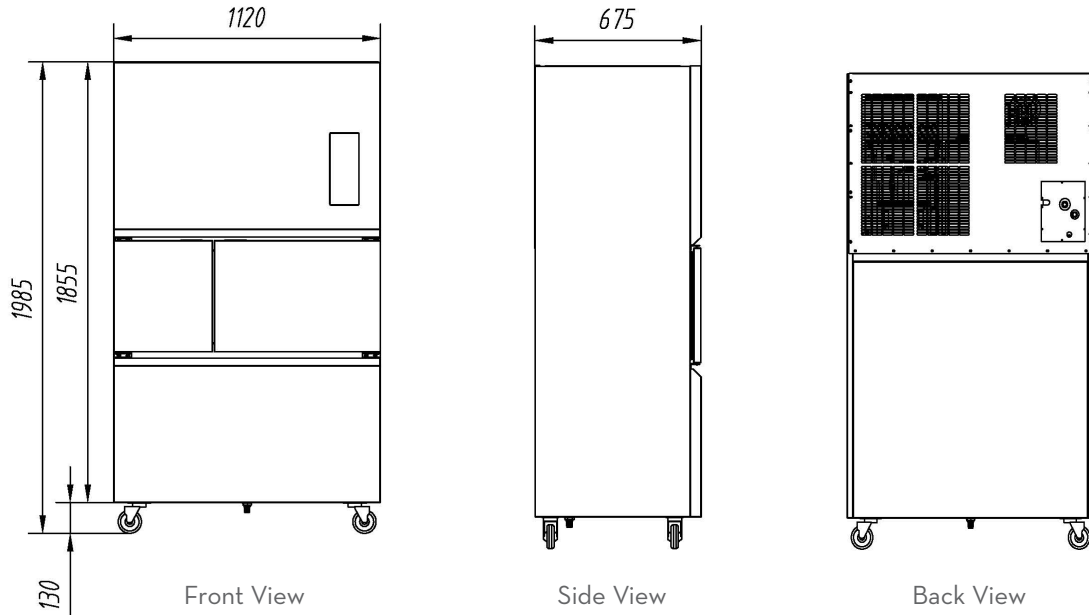
ICE PRODUCTION & ICE STORAGE

| Model Number | Ice Type | Ice Production Per 24hrs @ 25°C Air / 16°C Water (kg) | Ice Storage (kg) |
|--------------|----------------------|---|------------------|
| PBo.3F-FZ/Y | Sub-Zero Flake | 300 | 150 |
| MBo.3F-FZ/Y | Sub-Zero Micro Flake | 300 | 150 |



PB-F-FZ/Y & MB-F-FZ/Y Series

Air-Cooled



DIMENSIONS

| Model Number | Dimensions W x D x H (mm) |
|--------------|------------------------------|
| PBo.3F-FZ/Y | 1120 x 675 x 1985 |
| MBo.3F-FZ/Y | 1120 x 675 x 1985 |

OPERATING REQUIREMENTS

| | MINIMUM | MAXIMUM |
|-------------------------|---------|---------|
| Ambient Temp. Range Air | 5°C | 38°C |
| Water Temp. | 5°C | 28°C |
| Water Pressure | 1.5 BAR | 5 BAR |

SPECIFICATIONS

| Model Number | Condensor | Power | Voltage | Water Consumption | Water Pipe Ext Threads | Drainpipe External Dia. | Net Weight (kg) |
|--------------|-----------|--------|---------|-------------------|------------------------|-------------------------|-----------------|
| PBo.3F-FZ/Y | Air | 1,950W | 220V | 14L/H | 3/4" GAS | Ø 21mm | 200 |
| MBo.3F-FZ/Y | Air | 1,660W | 220V | 14L/H | 3/4" GAS | Ø 21mm | 200 |

Notes:

- Refrigerant Type: R404A
- Minimum 200mm rear clearance required from back of ice machine.
- Minimum recommended 800mm clearance from top of ice machine.
- Approx Shipping Weight: PBo.3F-FZ/Y - 208kg
- Approx Shipping Weight: MBo.3F-FZ/Y - 208kg

Coast Distributors Pty Ltd
 PO Box 288, Unanderra NSW 2526
 Ph: (02) 9524 1234
 sales@coastdistributors.com.au
 www.sales@coastdistributors.com.au
 March 2023

