

ELECTRIC XPRESS GRILL - 3 PLATEN

Garland's XPress Grill's upper and lower grill plates cook both sides simultaneously, reducing cook times by up to 50%. Upper grill plate is automatically raised and lowered by a lift system powered by a quiet actuator.

Lower griddle plate made of 3/4" (19mm) thick carbon steel, machine ground and highly polished.

Lower grill plate heated by three electric heating elements. Upper platen heated by nickel plated cast aluminum electric heating elements.

Electric top heater provided with replaceable quick release Teflon sheets.

Installation with zero clearance against non-combustible surfaces.

STANDARD FEATURES

- Programmable control for each cooking lane precisely controls:
 - Automatic lifting and lowering of upper platen
 - Cooking gap and time
- EasyTouch™ screen design is simple and intuitive with Press & Go interface
- Advanced temperature control, smart anticipation versus on-off
 - Eliminates temperature overshoot and undershoot
 - Increases temperature uniformity with five independently controlled heat zones -- three on plate and two on platen
 - Each lane can be set to a different temperature for menu flexibility, eg., all-day breakfast
 - Each lane can be turned Off when not required -- saving energy
- USB interface to update menus
- User interface provides advanced diagnostics and error logging for ease of service and increased firsttime fix
- Stainless steel front, top and sides
- Towel bar with bun pan lip
- Stainless steel dual side grease collectors
- Swivel casters (4) with front brakes
- IPX4 water resistant rating
- Two-year limited parts and labour warranty
- Available with 2 upper platen only on either side the left or the right:
 - 2L or -2R
- Grease cans with straight sides for minimum space

OPTIONAL FEATURES

- Grease cans with flared sides to hold optional tool holders
- Optional tool holders
 - 4-inch spatula
 - 6-inch scraper
 - 7-inch wiper

DIMENSIONS

External Dimension: 1007W x 876D x 1493H (open) mm

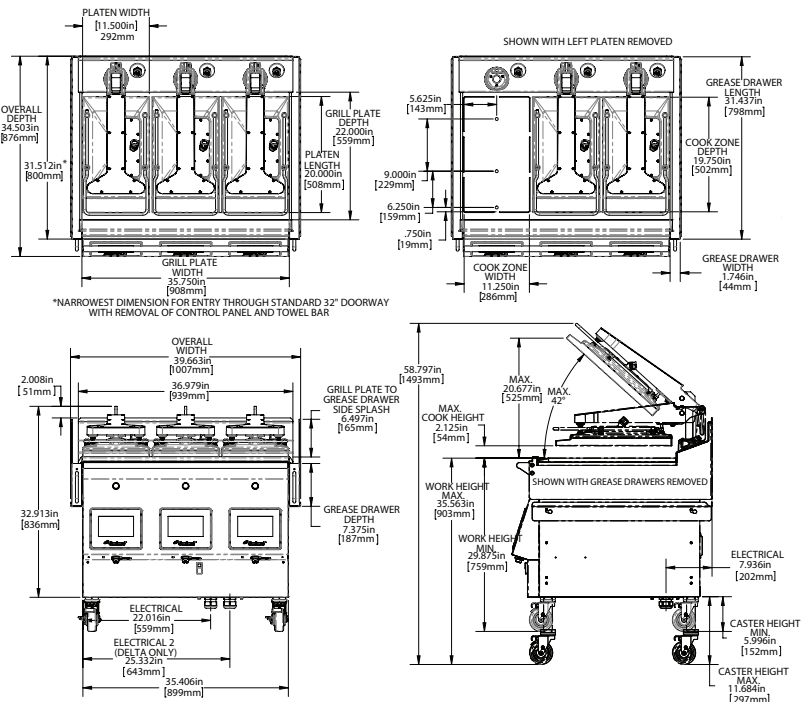
TECHNICAL DATA

Power supply: 415V, 3 Phase, 50Hz (3NAC 415V 50Hz)
 Total output: 23.8kW
 Breaker Size: 3 x 50A
 Supplied: 2.5 metre cable with CLI56PA550 Plug

SPECIFICATIONS ARE SUBJECT TO CHANGE WITHOUT NOTICE.



Shown with flared grease cans



**INDUSTRY
KITCHENS**

www.industrykitchens.com.au 1800 611 058



National Head Office
 156 Swann Drive
 Derrimut VIC 3026
 Tel: +61 3 8369 4600
 Fax: +61 3 8369 4699
 www.comcater.com.au

Melbourne
 96-100 Tope Street
 South Melbourne VIC 3205
 Tel: +61 3 8699 1200
 Fax: +61 3 8699 1299

Sydney
 20/4 Avenue of the Americas
 Newington, NSW 2127
 Tel: +61 2 8775 9500
 Fax: +61 2 9648 4762

Brisbane
 1/62 Borthwick Avenue
 Murarrie QLD 4172
 Tel: +61 7 3900 2700
 Fax: +61 7 3399 5311

Perth
 Unit 16, 7 Abrams Street
 Balcatta, WA 6021
 Tel: +61 8 6217 0700
 Fax: +61 8 6217 0799