



**Catalogue**  
**CATERING**  
**Chapter**  
**OVENS**

**INDUSTRY**  
**KITCHENS**

www.industrykitchens.com.au 1800 611 058

**Model**

APE-101 400/230V 3N/3 50/60Hz

19011023

24/01/2019

**ADVANCE PLUS OVEN, APE-101**  
Innovative technology in the kitchen :

**Professional quality**

- Precision, excellence and perfect results
- Save time and money

Capacity for 10 1/1-GN trays.

"Touch control" screen.

4 cooking methods: Steam, Adjustable Steam (Humidity control during cooking), Regeneration and Convection (up to 300°C).

Preheating option.

Fagor Easy cooking mode.

Fagor Cooking, range of cooking programmes.

Fagor Multi-Tray System, control cooking by tray.

Delayed programming for: Cooking, Low-temperature cooking and Washing.

Memory function: records the different cooking methods used.

3 Speeds - 2 power ranges.

Cold-Down chamber cooling system.

"Auto-reverse" system to reverse fan rotation.

5 wash programmes.

Multisensor temperature probe.

PC management software: History, recipes. HACCP, manuals...

HACCP cooking data recording system.

Steam generator equipped with limescale detector.

Steam generator automatically empties every 24 hours of cooking.

Semi-automatic limescale removal system.

Error detection system.

"Repair service" mode system.

Quick door-closing system.

IPX-5 protection.

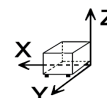
Retractable shower.

Power: 19.2 kW.

**Accessories in option:**

- Support SH-101, neutral cabinet, hot cabinet.
- Structures for trays or dishes, trolley for structure
- GN trays, grids, moulds...

**DIMENSIONS**



X Width	898 mm	X Gross width	980 mm
Y Depth	867 mm	Y Gross depth	1001 mm
Z Height	1117 mm	Z Gross height	1345 mm
Net Weight	172,0 kg	Gross Weight	204,0 kg
Net volume	0,870 m3	Gross volume	1,319 m3

**ELECTRICITY TECHNICAL SPECIFICATIONS**

Electric power	19,200 kW
Heating power	18,00 kW
Voltage	400/230V - 3N/3
Amperage	31/50
Electric frequency	50/60Hz

**WATER TECHNICAL SPECIFICATIONS**

Water max consumption	40,00 L/h
Pressure	H2O: 200-400kPa(2-4bar)

**OTHERS**

Noise level	60,00 dB
-------------	----------





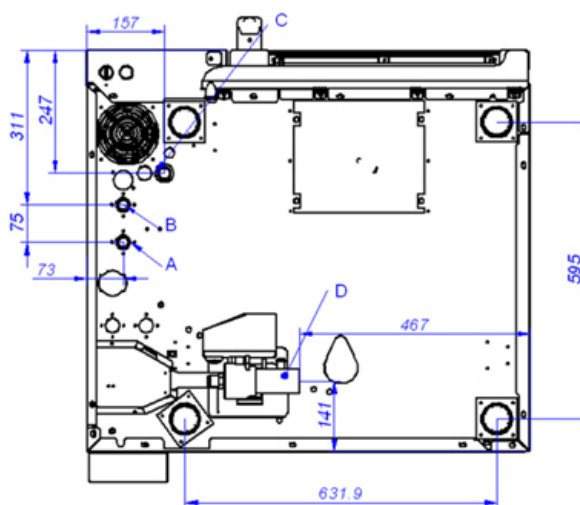
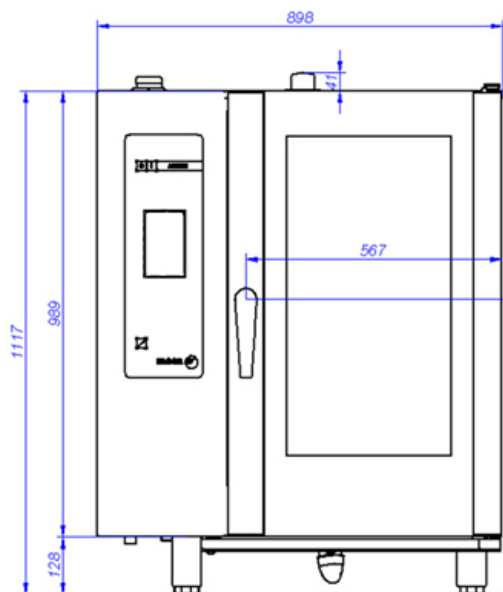
Catalogue  
**CATERING**

Chapter  
**Ovens**

Model  
**APE-101 400/230V 3N/3 50/60Hz**

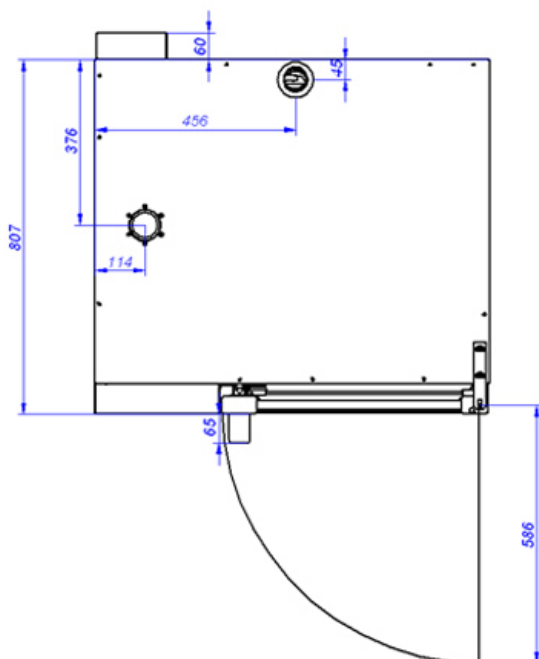
19011023

24/01/2019



**APE-101**

VISTA DE LA BASE DESDE LA PARTE INFERIOR  
VIEW FROM THE BOTTOM OF THE MACHINE



A: Entrada de agua blanda  
B: Entrada de agua dura  
D: Desagüe

C: Alimentación eléctrica

A: Soft water inlet  
B: Water inlet  
D: Drain

C: Electrical connection