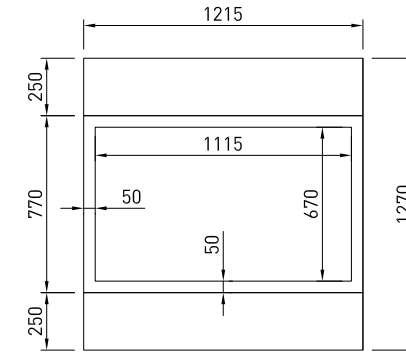


tray race optional extra
ordered separately



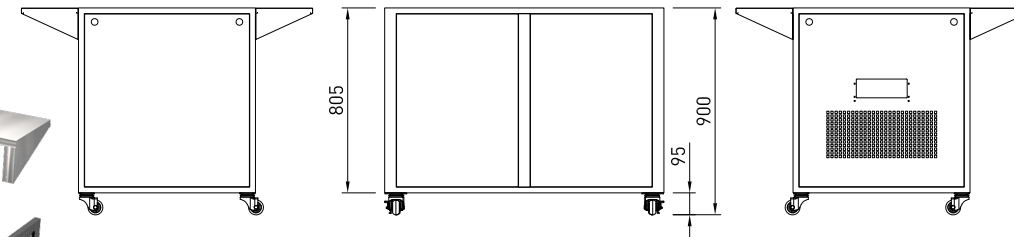
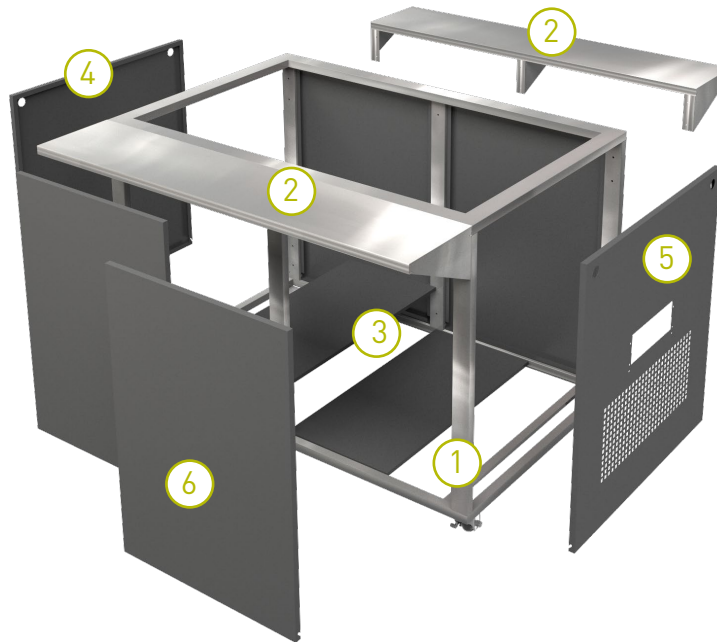
PRODUCT FEATURES

- Stainless steel frame
- Black colour steel panels
- Lockable castors
- Stainless steel tray race (optional extra)
- Fits all 3 series LSRF LSBM LSCM units
- Comes in flat pack box sets



PARTS

PART KEY	PARTS	MODEL AND NUMBER OF PARTS AND CODE
		LSCCK3
1	FLAT PACK FRAME	1 FF3
2	TRAYRACE optional extra	2 TR3
3	BASE SHELF PIECES *	2 BS3
4	END PANEL	1 PN
5	END PANEL WITH VENT	1 EP
6	FRONT & REAR PANELS	4 FP3



CABINET DIMENSIONS & SPECIFICATIONS

MODEL	CABINET			
	LENGTH [MM]	DEPTH [MM]	DEPTH WITH 2 X TRAY RACE [MM]	HEIGHT [MM]
LSCCK3	1215	770	1270	900

PACKED FOR SHIPPING

MODEL	BOX SIZE AND WEIGHT			
	LENGTH [MM]	DEPTH [MM]	HEIGHT [MM]	WEIGHT KG
LSCCK3	1330	870	505	65
Tray Race	1285	355	320	12

* Do not fit base shelf when installing RF unit, this allows airflow

Prior to installation see, installation guidelines, ventilation requirements and drainage options documents

***ASSEMBLY REQUIRED**