

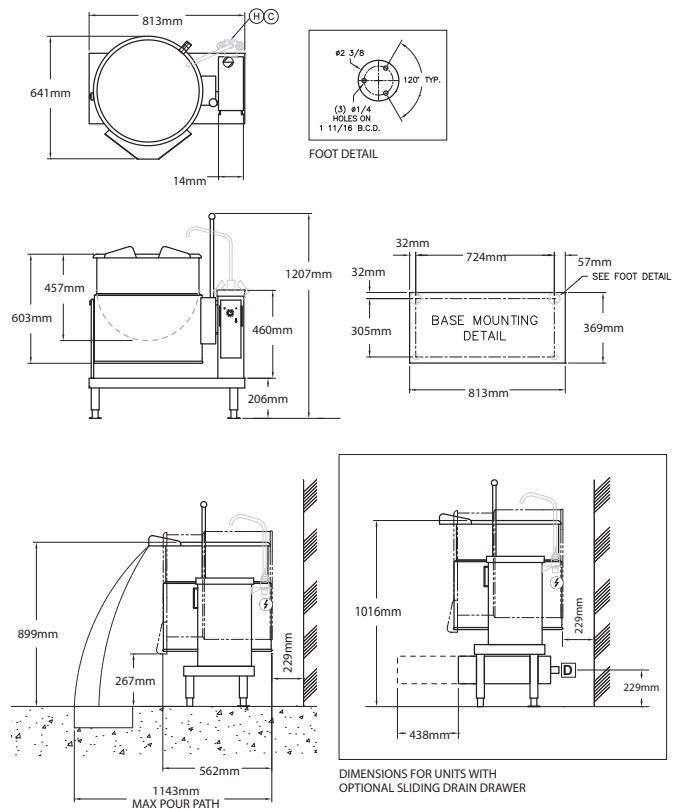
Lever tilt, electric, self contained single kettle with 80lt capacity, 2/3 steam jacketed. Simple & reliable solid state controls for accurate temperature control ($\pm 1^{\circ}\text{C}$) and low water safety. All exterior surfaces are stainless steel.

STANDARD FEATURES

- Manual tilting, balanced design
- IPX6 Rated water resistant controls, splash-proof construction
- Welded-in heating elements
- 50 psi steam jacket rating for higher cooking temperatures
- Solid state water level control
- Splash proof element cover with a double gasket seal
- 152mm level adjustable feet
- Large pouring lip for high capacity and chunky products
- Steam jacket filled with treated water, venting and/or refilling is not required
- Operating temperature range from 63°C - 127°C
- Re-inforced rolled rim design prevents damage to kettle rim
- Easily cleaned: kettle and all exterior surfaces are of type 304 stainless steel with an #4 finish
- Rear mounted easy access pressure gauge and pressure relief valve to prevent tampering.
- Type 316 Stainless Steel Kettle interior for high acid food products (316)

ACCESSORIES

- Lift-off Cover (CL20)
- Measuring Strip (MS20)
- Kettle Markings (KMIL)
- Food Strainer (FS20)
- Basket Strainer (TBS-20)
- Protective Control Panel (PCE)
- Double pantry faucet with swing spout and mounting bracket (DPK20)
- Kettle Accessory Kit (KAK)
 - Clean-up Brush (CB) - 36" Kettle Paddle (KP)
 - 36" Kettle Whip (KW) - 36" Kettle Brush (KB)
 - Draw-off Brush (DB) - 24 oz. Ladle (KL)
- Sliding Drain Drawer (-SLDK)



TECHNICAL DATA

Power Supply: 3NAC 415V 50Hz, 20.9 amp
(Cable & Plug not included)


Total Output: 15 kW

Capacities (per kettle):
(in 115 gram servings, other sizes may be calculated)
20 gallons / 80 litres - 704 servings


SHIPPING DATA

Shipping Weight: 123kg
Shipping Dimensions: 965W x 965D x 1371H mm

SPECIFICATIONS ARE SUBJECT TO CHANGE WITHOUT NOTICE.

DRAIN 

1 1/2" NPT. pipe (for optional sliding drain drawer).

WATER 

3/4" O.D. copper tube or 1/2" NPT. pipe.
When ordered with optional faucet.

CLEARANCE

RIGHT = 0", LEF = 0"
REAR = 6" (152mm)