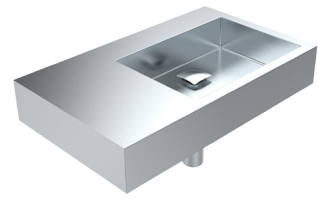




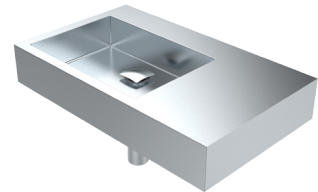
AS-1428
COMPLIANT



HBBEL-D Bellagio Accessible Basin with central integral shelf and optional Bottle Trap



HBBEL-D-SL - Bellagio Accessible Basin with Left Hand Integral Shelf and optional bottle shelf



HBBEL-D-SR - Bellagio Accessible Basin with Right Hand Integral Shelf and optional bottle shelf

features
and
benefits

- Modern, square profile
- Fully hand made, seamless design
- Grade 304 satin stainless steel
- Double-skinned robust construction
- Larger back landing to meet AS1428.1 shelf requirement
- Back landing available to the left or right (HBBEL-D-SL/SR)
- Wall mounted
- 40mm square waste outlet
- 1, 2 or 3 tap holes

about

The BRITEX *Accessible Bellagio Wash Basin* is a fully hand made, double-skinned stainless steel wash basin. Manufactured from heavy gauge commercial grade stainless steel, the Accessible Bellagio wash basin is supplied complete with a 40mm waste outlet and is both functional and robust. Designed with a larger back landing that meets AS1428.1 shelf requirements allows for the basin to be compliant without an additional shelf unit. For design flexibility the landing is also available to the left or right of the basin. The Accessible Bellagio Basin is designed to be wall mounted.

sample
spec.
text

*BRITEX Stainless Steel Accessible Bellagio Wall Mounted Basin - 450L x 450W x 100H O/A - complete with square pop waste and integral **centre/left/right** shelf space - Product Code HBBEL-D-XX*

*RED TEXT may denote a **variable** where one option only is to be selected, a **nominal dimension** that needs to be specified, or an **optional feature** that can be removed if not required. Please refer to the back of this page for additional specification details and options.

VISIT BRITEX.COM.AU TO DOWNLOAD BIM FILES, CAD DRAWINGS AND THE MOST CURRENT PRODUCT LITERATURE.

ACCESSIBLE BELLAGIO BASIN

PRODUCT CODE

HBBEL-D

HOW TO SPECIFY: Accessible Bellagio Basin

Sample Specification Code

A B C D
HBBEL-D SL - TW-9103-BTRAP

= Accessible Bellagio Basin with Left Hand Shelf, Timed Flow Lever Tap and Bottle Trap

Specification Key

A = Product Code
B = Shelf Position (DR for Right Hand, Leave Blank for Centre)
C = Tapware (optional)
D = Bottle Trap (optional)

Accessories



TW-9108
Timed Flow Lever Pillar Tap



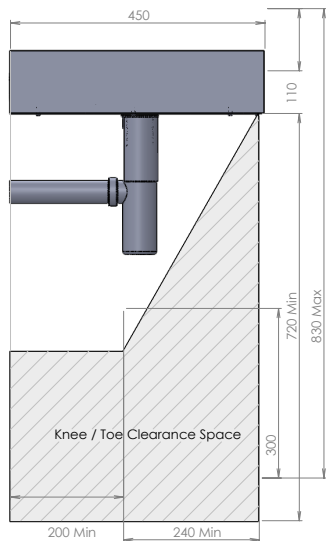
TW-G-185
Curved Sensor Tap with Power Generator



BTRAP
Bottle Trap



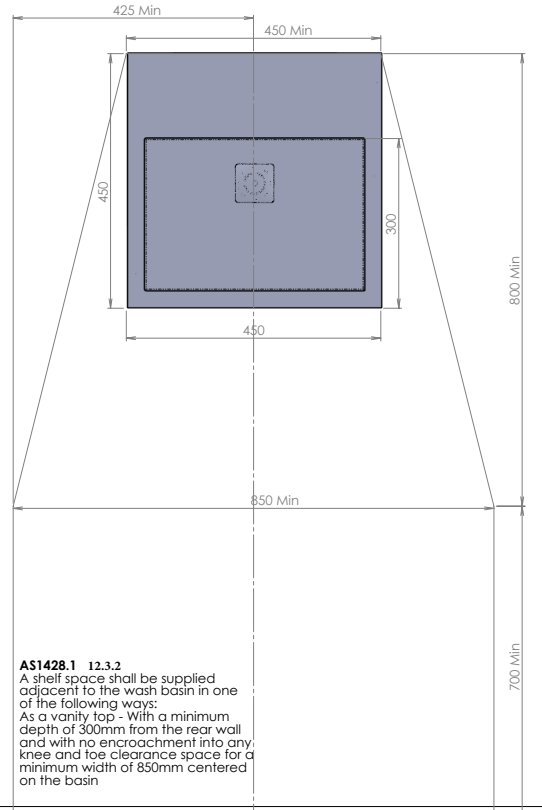
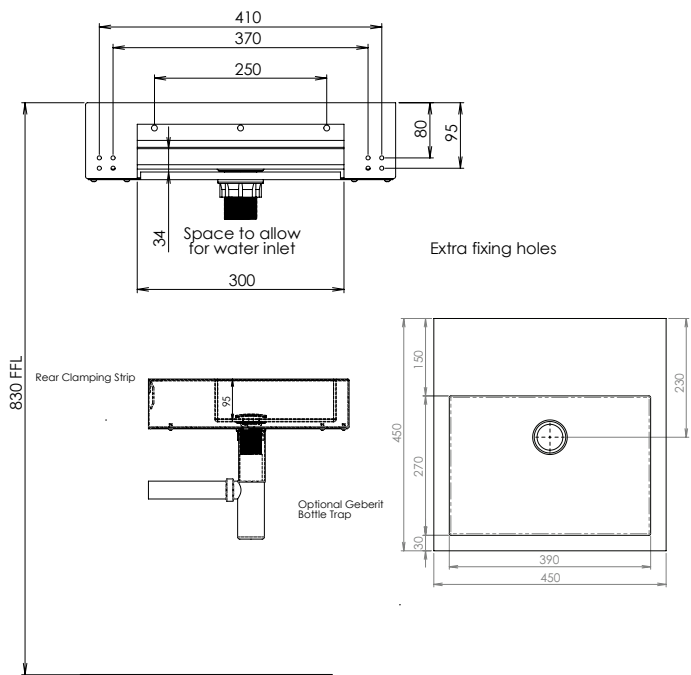
TW-MIX-L
Hob Mounted Mixer Tap Lever Action



specifying guide

When specifying this product please include:

- Product Name and Code



options

- Integral Shelf Unit Centre/ Left Hand Side / Right Hand Side
- Tapware (optional)
- Bottle Trap (optional)

VISIT BRITEX.COM.AU TO DOWNLOAD BIM FILES, CAD DRAWINGS AND THE MOST CURRENT PRODUCT LITERATURE.

Last Revised May 2024



Due to ongoing research and our commitment to product development, details are subject to change without notice. Details accurate at time of print. Please refer to britex.com.au for the most current product information. Allow +/- 5mm tolerance for dimensions and setouts shown in product literature.

