

NEUTRAL ELEMENT WITH DRAWER L400 TOP VERSION

Project
Rev.:
Zone:
Location:



CODICE
CR1015099

MODELLO
Q70NEC/410

SERIE
QUEEN 7

GENERAL CHARACTERISTICS

For those who do not want to give up the quality and solidity of a Queen stove, the Series 7 offers a 700 mm depth and more compact dimensions to fit any room, burners available in various configurations and wattages, enhanced by the refined Scotch Brite finish.

Thanks to its extreme compositional freedom, every composition is possible: you can combine Model i tops with accessorizable oven and neutral bases and hygienic finishes; create customized solutions by matching and attaching equipment back to back, sideways "flush" perfectly sealed, or "bridge" structures, offering high-level solutions that always perfectly meet the chef's needs. As a total guarantee, all equipment that make up a Queen7 kitchen are certified in compliance with international standards, including CE, GAR, AGA and others.



MODEL SPECIFICATIONS

TECHNICAL SPECIFICATIONS

- Stainless steel compartment Accessory with doors, drawers and heating kit.
- Anti-tip guides for gastronorm containers.
- Hinged door with athermic handle and magnetic lock, available with right or left opening.
- Drawer mounted on stainless steel telescopic slides running on ball bearings.
- Load capacity for each drawer kg 60.

NEUTRAL ELEMENT WITH DRAWER L400 TOP VERSION

Project
Rev.:
Zone:
Location:



CODICE
CR1015099

MODELLO
Q70NEC/410

SERIE
QUEEN 7

Technical Information

SPECIFICATION	DATA
MATERIAL	CR1015099
DEFINITION	Q70NEC/410 EL. NEUT. TOP M40 C/CAS
COMMERCIAL LINE	QUEEN
DIM. WIDTH	400 mm
DIM. DEPTH	700 mm
DIM. HEIGHT	250 mm
NET WEIGHT	22 Kg
VOLUME (net)	0.07
PACKAGE LENGTH	440 mm
PACKAGE WIDTH	850 mm
PACKAGING HEIGHT	550 mm
PACKAGE VOLUME	0,206 m3
GROSS PACKING WEIGHT	28 Kg

NEUTRAL ELEMENT WITH DRAWER L400 TOP VERSION

Project
Rev.:
Zone:
Location:



CODICE
CR1015099

MODELLO
Q70NEC/410

SERIE
QUEEN 7

NEUTRAL ELEMENT WITH DRAWER L400 TOP VERSION

Project
Rev.:
Zone:
Location:



CODICE
CR1015099

MODELLO
Q70NEC/410

SERIE
QUEEN 7

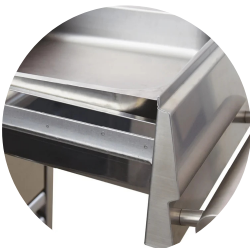
PRODUCT'S RANGE PLUS



Modular, easy to combine and robust.



Drawer with ergonomic handle



Drawers capacity GN 1/1 bowls