

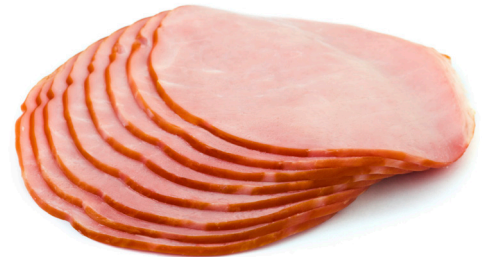
Birko Meat Slicer Medium & Large

INDUSTRY
KITCHENS

Sturdy aluminium cast construction and easy-slide action

High-quality, gravity fed meat slicers with stainless steel blades capable of slicing a variety of meats. Perfect for small and medium commercial operations.

www.industrykitchens.com.au 1800 611 058



Commercial quality – aluminium cast construction with removable stainless steel blade, fan-cooled motor for longer operation.

Practical – Easy-glide action and adjustable blade settings for varying thickness. Belt driven and comes complete with blade sharpening stones, adjustable moisture deflector and safety cut-out switch.

Safe – non-slip rubber feet with ABS handles and dials, blade and back plate safety guards, blade removal tool.

Meat Slicer		
Part Number	1005100	1005101
Voltage	230-240V	230-240V
Power	150W 0.7 Amps	250W 1.1 Amps
Slicing Thickness	0-12mm	0-15mm
Blade Diameter	250mm	300mm
Weight	18 Kg	25 Kg
Dimensions (mm)	W 537 D 460 H 400	W 597 D 520 H 495



Blade Removal tool

* Not recommended for high moisture content foods. Tomatoes, lettuce, vegetables and cheese, etc.