

# Troughs

**INDUSTRY  
KITCHENS**

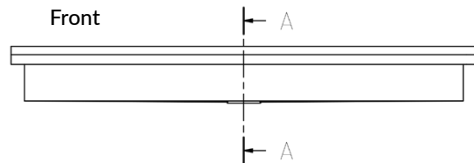
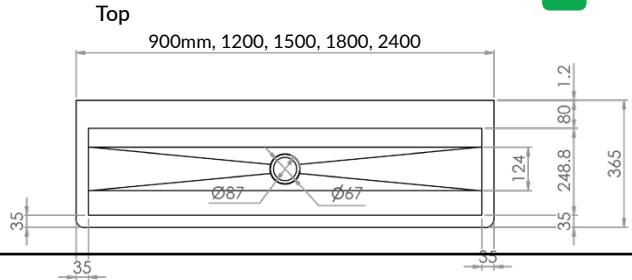
www.industrykitchens.com.au 1800 611 058



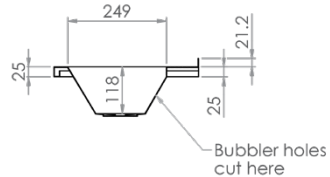
## Walls End Pattern Trough Off the Shelf

### PT-7

- Centre outlet
- Constructed from 1.2mm 304 grade satin stainless steel
- Tap holes as required
- Available pre-plumbed
- Radius external corners
- Separate flat splashback available on request
- Wall brackets manufactured from stainless flat bar with pre-drilled fixing holes
- Custom sizes available



### Side



Optional pre-plumbing available with your choice of tapware

Pillar Taps

45° Bubbler



PRODUCT CODE	CAPACITY
PT-7-900	900mL - 18.5L
PT-7-1200	1200mL - 25L
PT-7-1500	1500mL - 31.5L
PT-7-1800	1800mL - 38L
PT-7-2400	2400mL - 51.5L

Suggested mounting height for drinking trough:

Infant - 550mm

Primary - 700mm

Secondary - 900mm

Suggested mounting height for wash trough:

Infant - 550mm

Primary - 650mm

Secondary - 700mm