

# WMS FELLOW AWARD CRITERIA AND NOMINATION INSTRUCTIONS



## **1.1 BACKGROUND**

The WM Symposia (WMS) established the honor of Fellow in 2011. The objective was to recognize volunteers for distinguished contributions to the advancement of radioactive waste and radioactive material management. Elevation to the status of WMS Fellow is attained through peer recognition and confirmation by the WMS Board of Directors (BOD). Newly elected WMS Fellows are formally inducted into WMS Fellowship by the President of WMS.

New WMS Fellows are presented with a plaque at the Tuesday Awards luncheon at the annual conference, listed on the WMS website, and recognized with a WMS Fellow pin at the conference.

## **1.2 QUALIFICATIONS**

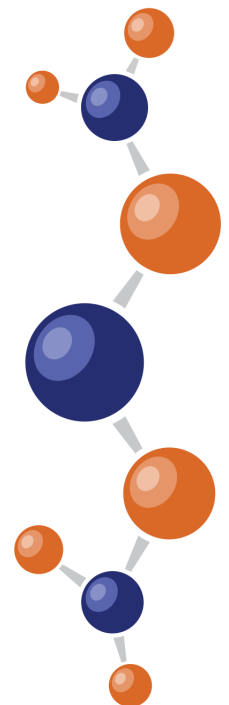
The honor of being accorded the Fellow grade of WMS is reserved for senior members of good reputation who shall have:

1. Demonstrated leadership;
2. Brought new ideas, topics, sessions or events to WMS;
3. Stimulated attendance, presentations and involvement;
4. Recognition among peers as a source of help/encouragement;
5. A good attendance record;
6. Served as an active volunteer with WMS for fifteen (15) or more years; and
7. Compiled a professional record of experience marked by significant contribution to the advancement of one or more of the various topics served by the WMS.

The promotion of WMS Fellow requires a willingness and formal acceptance on the part of the candidate to be designated as a WMS Fellow.

## **1.3 PROCEDURES**

Nominations from any WM participant are to be made on our [website](#) by selecting “Fellow Award” under the Awards Nomination section. Three sponsors endorsing the nominee are suggested. One sponsor shall be designated as the principal sponsor. Preferably, sponsors of a given candidate should be broadly dispersed geographically and two should be from the WMS Program Advisory Committee (PAC) Membership.



### **1.3 PROCEDURES - continued**

The worthiness of a given candidate for advancement to WMS Fellow grade is determined by a critical review and assessment of submitted credentials and qualifications. Thus, the nomination package should be carefully prepared. In the process of review and selection, emphasis is placed on excellence of achievement.

The documentation supporting a nomination shall include details of the candidate's merits with regards to each of the seven (7) qualification criteria listed in Section 1.2. Evidence of the candidate's contributions shall be submitted by a written recommendation from the sponsors and others as appropriate.

Annually, the WMS Honors and Awards Committee (the Committee) will also screen the list of volunteers and select one or more PAC members for nomination. Preferably a WMS Fellow, Track Co-chair or the PAC Chair, will serve as the principal sponsor for the Committee nominee(s), including preparing the required nomination forms.

Nominees not approved for WMS Fellowship in a given year will be considered for the next three years, before a new nomination submittal is required.

It should clearly specify on the WMS Fellow nomination whether it is a surprise or not a surprise nomination. If not clearly specified, proposals will be considered not a surprise.

### **1.4 APPROVAL PROCESS**

The completed form and endorsement letters shall be uploaded to the website in a timely manner (see item 1.5). Nominations should provide adequate supporting evidence for each of the seven (7) criteria listed under item 1.2 above.

All WMS Fellow nominations are then screened by the Committee, and its favorable recommendations are forwarded to the WMS BOD for approval. The Chair of the Committee prepares a letter of endorsement listing all WMS Fellow nominees/candidates approved by the Committee for submittal to the WMS BOD for approval. It is anticipated that between three and five WMS Fellows will be selected each year.

### **1.5 SCHEDULE**

To be eligible for consideration, approval, and subsequent recognition/induction at the WMS Annual Meeting, all required information required to evaluate proposed WMS Fellows must have been submitted to WMS. For additional information and the submission due date, please visit the WMS [website](#).