



DFI EDUCATIONAL TRUST

2024

ANNUAL REPORT



MISSION

“To support and encourage individuals in the fields of study related to the deep foundations industry by providing scholarships, grants and opportunities to meet and work with deep foundations industry leaders.”

VISION

“To create opportunities for advancing knowledge in deep foundations and excavations through education, scholarships, and research, fostering a dynamic and skilled geoprofessional workforce. This will provide DFI member firms with exceptional talent and promote excellence within the industry.”

2024 BOARD OF TRUSTEES

Chair

Rudolph Frizzi, P.E., G.E., BC.GE

LANGAN Engineering and
Environmental Services LLC

Vice Chair

Zoran Curanovic, P.E.

Underpinning & Foundation
Skanska, Inc.

Treasurer

J. Erik Loehr, Ph.D., P.E.

University of Missouri

Secretary

Helen Robinson, P.E.

GEI Consultants, Inc.

Tracy Brettmann, P.E., BC.GE

A.H. Beck Foundation Co., Inc.

Gianfranco Di Cicco

GDConsulting LLC

Jim Glider

Malcolm Drilling Company, Inc.

Jonathan Huff

Richard Goettle, Inc.

Seth Pearlman, P.E., BC.GE

Menard USA

Mark J. Rice, Esq.

McNeil, Silveira, Rice & Wiley

Andrew C. Verity

Terracon Consultants

Emeritus Trustees

David Coleman

Daniel Dragone

Richard Short, P.E., BC.GE

M. Byrl Williams, P.E.

Executive Director

Theresa Engler



DFI EDUCATIONAL TRUST

2024 ANNUAL REPORT

CONTENTS

- 1** **Message from the Trust Chair** | Rudolph P. Frizzi
- 2** **Featured Recipients** | Jake Graff and Kimberly Martin
- 3** **2024 Highlights**
WiDF Telethon Major Success
New Trustees
- 4** **In Memoriam: William Loftus**
- 5** **2024 Scholarship Recipients**
Donations Make a Real Difference
- 9** **WiDF Grant Recipients and Paper Competition Winner**
- 10** **Cumulative Awards by School**
- 11** **Scholarship Funds At-a-Glance**
- 12** **Scholarship Recipient Demographics**
- 13** **2024 Fundraising Events**
5K Fun Run/Walk
Golf Outings
Giving Tuesday
Annual Gala Dinner
Women in Deep Foundations (WiDF) Receptions
Support from DFI
- 15** **2024 Financial Report**
- 15** **2024 Major Donors**
- 16** **2024 Major Event Sponsors**
- 17** **Major Contributors**
2005 - Present

The Deep Foundations Institute Educational Trust is an independent 501(c)(3) nonprofit organization established in 2006 by the Deep Foundations Institute (an industry association) as its charitable arm. The Trust is governed by a volunteer Board of Trustees and administered by the staff of the Deep Foundations Institute, headquartered in Hawthorne, New Jersey. This structure enables a viable and efficient organization and minimizes management costs.

MESSAGE FROM THE TRUST CHAIR

To our Donors and those looking to support the Trust,

For nearly 20 years, the DFI Educational Trust's mission and vision have been focused on supporting and encouraging individuals in the fields of study related to the deep foundations industry by providing scholarships, grants, and opportunities to meet and work with industry leaders. We are thankful to all Donors who have helped build the Trust into a strong, stable, and impactful charitable organization, with assets exceeding \$5 million. Since inception, the Trust has awarded \$2.4 million in scholarships and grants to over 600 individuals at nearly 100 educational institutions across the United States and Canada. What a fantastic and inspirational effort! The high rate at which scholarship applicants and awardees enter, stay and advance in the deep foundations industry speaks volumes to the Trust's positive impact.



Rudolph P. Frizzi

Looking back on 2024, we were saddened by the loss of a DFI and DFI Educational Trust Cofounder, William "Bill" Loftus. Bill was a humble, kind man with a generous spirit and great love for DFI, the Trust and its activities worldwide. The Loftus family generously established a scholarship fund in Bill's memory, and with additional support from donors, a sustainable endowment was created that enabled the first scholarship awards in 2024.

The Trust continues to boldly invest in the future, and in 2024 awarded over \$237,000 in scholarships and grants. This would not be possible without generous donations totaling over \$173,000 in 2024. Thank you to all our Donors, and the tireless efforts of those supporting the Trust with their time and talent as we far exceeded even our aspirational 2024 fundraising goal. We're encouraged by our donors' generosity and are hopeful this momentum will be maintained in 2025. If every individual DFI member made an annual \$100 charitable contribution starting in 2025, the Trust could maintain and, in the future, exceed the amount and number of scholarships and grants awarded each year.

The Trust's work to attract the highest quality students to the deep foundations industry and DFI corporate member companies continues. Collaborative initiatives between DFI and the Trust include the University Ambassador program which is developing consistent student outreach and interaction, as well as the Student Engagement Committee which is raising awareness of career prospects in our industry and providing DFI members the opportunity to interact with prospective employees at school and DFI events.

Your continued financial support is needed. Please consider making an individual or corporate donation or creating a lasting legacy by funding a scholarship in honor of a company or industry leader. Other ways to support the Trust include attending or sponsoring fundraisers such as the Annual Gala, golf outings, the 5K Fun Run/Walk during DFI's Annual Conference and Women in Deep Foundations Committee events; supporting student programs and being actively involved in DFI throughout the year.

Thank you for your continued support — of the Trust, the students, and the future of the industry.

Sincerely,

Rudolph P. Frizzi

Chair, Board of Trustees DFI Educational Trust

Since 2006, the Trust
has awarded
\$2.4 Million
in scholarships and grants
to more than
600 individuals



FEATURED RECIPIENTS

Where they are now, how they got to work in deep foundations and their advice to future engineers

Jake Graff

Jake Graff, alumnus of the University of Pittsburgh's Swanson School of Engineering and recipient of a 2022 DFI Educational Trust University of Pittsburgh Scholarship, is a project engineer at Brayman Construction Corporation. Currently assigned to the Bluestone Dam project in Hinton, West Virginia, Graff is contributing to a U.S. Army Corps of Engineers megaproject now in its final phase after a decade-long Dam Safety Assurance effort. His role, focused on the drilling, installing and testing of post tensioned rock anchors, exposes him to diverse foundation applications, construction methods and field crews. It is, as Graff describes it, "a career-defining project."

Like many college students, Graff attended career fairs to explore opportunities and network with future employers. It was at one of these fairs that he first met with a representative of Richard Goettle, Inc., who described the industry as "the world of the unknown" due to the unpredictability of underground conditions.

Intrigued, Graff signed on as a co-op with the company, which introduced him to DFI.

The scholarship he received about a year later helped him forge new industry connections. "Given the specialty of the work, the industry is like a tight-knit community, even among competitors. Everyone knows each other...being a recipient of the scholarship has opened new doors to connect and build new relationships," says Graff. With his whole future ahead of him, Graff looks forward to the variety of projects he'll tackle in this field.

When Graff isn't working he enjoys cooking, long walks in and around the city of Pittsburgh, and attending sporting events with friends and colleagues.



Advice to future civil engineers:

"Engineering is not just about technical skills. It's about understanding your work's impact on the environment, communities, and the future. Like a solid foundation is key to a skyscraper, ethics and intellect are essential to your career. Ask questions, and push boundaries to tackle challenges and reimagine what's possible."

Jake Graff

Kimberly Martin



For Arizona native Kimberly Martin, a summer internship in a geotechnical testing lab became the catalyst for an inspiring career in deep foundations. A 2019 recipient of the DFI Trust's Charles J. Berkel Memorial Scholarship, graduate of the University of Arizona and leader at Keller North America, Martin traces her career back to her first internship following her freshman year of college. That early exposure sparked her fascination with geotechnical engineering.

A later internship at a hard rock mine solidified her passion. "After a second internship during my senior year of college, I knew I loved working with big equipment, and I never looked back," Martin recalls. While attending graduate school, she discovered DFI and quickly got more involved. Martin says, "the DFI Trust scholarship was a kick-off point—it really encouraged me to engage with the organization."

Since receiving the DFI Trust scholarship in 2019, Martin has completed her Ph.D. at Arizona State University, become an active member of DFI and its Sustainability Committee, delivered a keynote lecture at DFI's SuperPile Conference and presented at numerous other industry events. She continues to champion sustainability in the foundations industry, with a particular focus on carbon reduction.

"Through my involvement with DFI, I've connected with other engineers who are passionate about making the deep foundations industry more sustainable," says Martin. Her work centers on minimizing the environmental impact of foundation systems by refining techniques that use cementitious materials more efficiently. "It's exciting when we discover something new that works—it's rewarding for the whole team."

Outside of her impressive career, Martin is a proud mom of three. She enjoys skiing, skating, biking, and playing a wide range of sports with her children.

Advice to future civil engineers:

"I love the innovative culture of the deep foundations industry. Engineers are always trying to make their designs better, operations teams are always trying to bring those designs to life in the fastest, safest, high-quality way possible – It's a difficult but fun balance. Seeing designs come to life—and testing innovations in real time—is the best part."

Kimberly Martin

2024 DFI EDUCATIONAL TRUST HIGHLIGHTS

WiDF Telethon at DFI49

The Women in Deep Foundations (WiDF) Committee held a telethon at DFI's 49th Annual Conference on Deep Foundations (DFI49) to raise money for the WiDF Fund, which provides grants for women in the industry to attend the DFI Annual Conference. And what an amazing success it was! Through the generosity of several DFI members and member companies, the committee raised over \$20,000, the equivalent of 11 grants, for DFI50.



Erik Loehr congratulates WiDF Committee on a successful telethon at DFI49.

L-R: Mary Ellen Large, Emma Migneault, Lucky Nagarajan, Helen Robinson, Shawna Munn, Theresa Engler

Students Attend DFI49

Through the generosity of Byrl and Frances Williams, a fund was established in their name in 2023 to provide support to students and professors at Gonzaga University for various activities. In 2024 the fund covered the costs of seven students and one professor from Gonzaga to travel and attend the DFI 49th Annual Conference (DFI49) in Aurora, Colorado. Support for initiatives like this further the Trust's mission of attracting the best and brightest minds to the industry.



DFI's Angie Gible and Theresa Engler welcome Professor Mark Muszynski and students to DFI49.

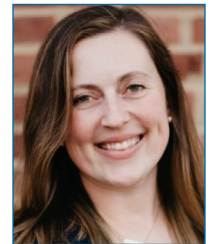
Welcome New Trustees

In 2024, the DFI Educational Trust's Board of Trustees elected four new Trust Board Members to take office January 1, 2025.



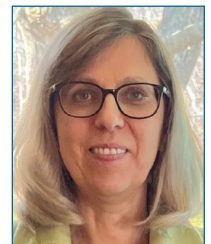
John M. Allen, P.E., is the foundation engineering manager at Master Builders Solutions with over 20 years of experience in geotechnical projects and is an active member of several organizations including the American Society for Testing and Materials (ASTM) and the International Geosynthetic Society's North American Chapter.

Emma Migneault, channel account manager at Worldsensing, has over 12 years of experience in business development and project management, specializing in instrumentation projects for geotechnical and structural applications for the last seven years. Migneault is also the chair of DFI's Women in Deep Foundations Committee.



Shawna Munn, P.Eng., is a Major Projects Design Manager for Aecon Group Inc. and President of Enterra Engineering Ltd. She joins the Trust Board with extensive expertise in geotechnical design and complex excavation support systems. Munn has been actively participating in multiple DFI committees since becoming a member in 2017.

Monica Prezzi, Ph.D., civil engineering professor at Purdue University and co-director of its Center for Offshore, Foundation and Energy Engineering, has a background in major construction projects and geotechnical research. Prezzi was also the first DFI Young Professor Paper Competition winner in 2005.



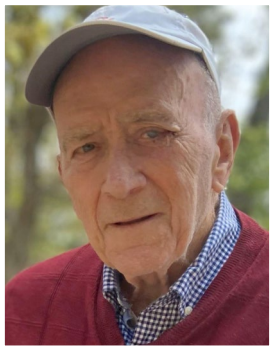
Jonathan Huff, P.E., Goettle, was re-elected for an additional two-year term.

Andrew Verity, P.E., Terracon Consultants, formerly a two-year Trustee, was elected as a five-year Trustee.

IN MEMORY OF

WILLIAM F. LOFTUS

1933 - 2024



William F. Loftus

William F. (Bill) Loftus, a pioneering engineer, beloved mentor, founder and past president of the Deep Foundations Institute, and friend of many, passed away in March 2024. Bill leaves behind a legacy of innovation, leadership, and generosity. Born and raised in Brooklyn, New York, Bill's passion for civil engineering led him to Brooklyn Tech and Manhattan College, where he laid the foundation for an exceptional career. In 1968, he established William F. Loftus Associates, contributing his expertise to transformative projects across the tri-state area and serving as a trusted consultant to the Army Corps of Engineers.

Recognizing the value of collaboration in the industry, Bill co-founded the Deep Foundations Institute (DFI) in 1976 with Jack Dougherty, fostering an enduring network of industry professionals dedicated to advancing the field. Bill was instrumental in bringing DFI outside the United States to the global organization it is today. He is the only DFI president to serve the organization as president twice, 1981-82 and 1984-85, and was honored with the DFI Distinguished Service Award in 2000 for his contributions.

"I personally will miss him immensely. At my start with DFI our headquarters consisted of a few rooms within his offices in Englewood Cliffs, New Jersey. We enjoyed a cup of coffee together every day and he relayed to me the early days of DFI's formation. He was a humble, kind man with a generous spirit and he had a great love for DFI and its activities, specifically those outside the United States," says DFI Executive Director Theresa Engler.

Prior to his passing, Bill and his wife, Mary, established the **William F. Loftus Memorial Scholarship Fund** which honors Bill's legacy by providing annual scholarships to undergraduate and graduate civil engineering students in the department of Civil and Environmental Engineering at Manhattan University, Bill's alma mater.

Bill's kindness, wisdom, and pioneering spirit will forever echo through the communities he built, the knowledge he shared, and the countless lives he touched.

Support your
future employees -
DONATE to the
DFI Educational
Trust



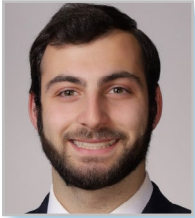
2024 SCHOLARSHIP RECIPIENTS

The DFI Educational Trust supports many students across the United States and Canada pursuing a degree in civil engineering or a field related to the deep foundations industry. With your generous donations, you are alleviating some of the financial costs associated with higher education and helping the Trust attract the best and brightest to the industry.

LANGAN Legacy Scholarships

The following students were the 2024 recipients of the **LANGAN Legacy Scholarships**, each receiving a \$6,250 scholarship.

Bernard F. Langan Scholarship



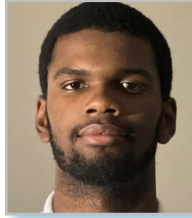
*Nicholas Robins,
graduate student,
Purdue University*

Donald J. Murphy Memorial Scholarship



*Lotam Leinzon, junior,
NYU Tandon School of
Engineering*

George P. Kelley Memorial Scholarship



*Karamoko Sow,
graduate student,
Drexel University*

Manuel Fine Civil Engineering Scholarships

The Trust awarded two **Manuel Fine Civil Engineering Scholarships**, in the amount of \$2,500 each. The scholarship fund was established in 2013 and honors Manuel Fine (1929-2018), who served DFI for 24 years in many roles. The fund provides scholarships for civil engineering students attending universities in the Province of Ontario.



*Joseph D'Angelo, senior,
McMaster University*



*Bella Walker, junior,
Queen's University*

Goble Rausche Likins Scholarships

(\$5,000)



*Malu Castex, sophomore
San Diego State University*

(\$2,500)



*Ali Doostvandi, graduate student
Texas A&M University*

Stanley Merjan/CCNY Civil Engineering Scholarships (\$5,000 each)

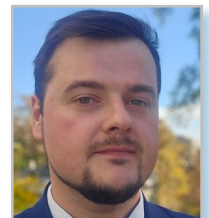
The fund was established in 2010 and is named for the late Stanley Merjan (1928-2019), an inspiration and mentor to young engineers throughout the construction industry, and a graduate of City College of New York (CCNY).



*Liberty Abordo,
senior*



*Marne Diokahne,
senior*



*Patryk Kwiatkowski,
senior*

Charles J. Berkel Memorial Scholarship Recipients at University of Houston

(\$1,500)



*Darshan Nawaneeda,
doctoral student*

(\$1,500)



*Mumtaz Chandani,
graduate student*

(\$2,000)



*Brandt Bechtel,
senior*

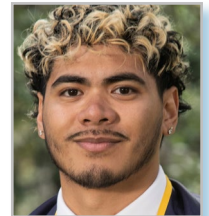
Charles J. Berkel Memorial Scholarship Recipients University of California, Berkeley (\$5,000 each)



*Tianfeixue Han,
senior*



*Amery Rodriguez,
senior*



*Solon Palu,
senior*

2024 SCHOLARSHIP RECIPIENTS

Both scholarships below were established in 2016 through the fundraising efforts of DFI Past President Seth Pearlman, who chaired the Annual Pennsylvania Golf Outing at Chartiers Country Club in Pittsburgh, Pennsylvania from 2006 through 2016. Part of the event's proceeds benefit these funds below.

Penn State University Scholarships (\$5,000) (\$2,500)



Matthew Griffiths, senior



Xueyang Wang, graduate student

University of Pittsburgh Scholarships (\$5,000) (\$2,500)



Alexzander Toto, senior



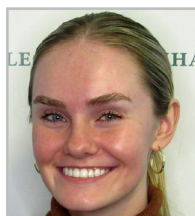
Mariia Nikitina, doctoral student

George J. Tamaro Manhattan University Civil Engineering Scholarships (\$2,500 each)

The scholarship is named for George J. Tamaro, the first ever DFI Legends-Engineer Award recipient, recipient of the 1999 DFI Distinguished Service Award, and graduate of Manhattan University.



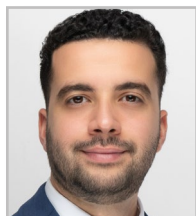
Brady Flood, senior



Caitlin Haiduk, senior



Samuel Guzman, senior



Annas Alokush, junior

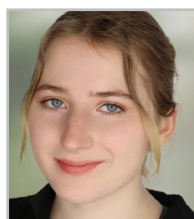


Konstantine Mendrinov, junior



Emmanuel Lala, senior

Larry P. Rayburn/University of Cincinnati Scholarships (\$3,500 each)



Renn Rohrer, freshman



Amanda Resendiz-Azua, freshman



Eli Sharp, freshman

Graham Studebaker, freshman
Ammar Yusuf, freshman

Scholarships at the University of Illinois at Urbana-Champaign

Charles J. Berkel Memorial Scholarship (\$5,000)



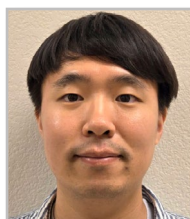
Jonathan De La Rosa, junior

LANGAN/Dennis J. Leary Scholarship (\$6,250)



Aaron Perez Araya, junior

Michael L. Condon Civil Engineering Scholarships (\$4,000 each)



Hyeon Jung Kim, doctoral student,
University of California, Davis



Saad Allah Solh, doctoral student,
Virginia Tech



Khac Le,
graduate student, California Polytechnic
State University, Pomona

2024 SCHOLARSHIP RECIPIENTS

William F. Loftus Memorial Scholarships (\$2,500 each)

This scholarship was established in 2024, in memory of William F. (Bill) Loftus. The fund provides annual scholarships to undergraduate and graduate civil engineering students in the department of Civil and Environmental Engineering at Manhattan University, Bill's alma mater.



Alexandra Castellano,
senior



Mark Markic,
senior

Congratulations to all recipients!

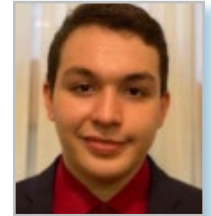
Menard Carnegie Mellon University Scholarships (\$5,000 each)



Aurora Fuchs,
junior



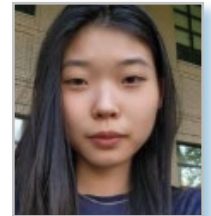
Justin Peng,
graduate student



Dalton Harmon,
senior



Menard-DFI Scholarship recipients Fuchs (left) and Peng (right) pictured with alumnus Seth Pearlman during Spring Carnival 2024.



Beatrice Wu,
graduate

At-Large Scholarships

The At-Large Scholarships are available to students pursuing careers in civil and geotechnical engineering or in construction management attending any accredited college or university in the United States. At-large scholarships are awarded from several funds at different amounts.

Charles J. Berkel Memorial Scholarship (\$2,000)



Bryan Amado Rojas, senior,
University of California,
Berkeley

Charles J. Berkel Memorial Scholarship (\$2,000)



Luan Bui, junior,
California State University,
Long Beach

John O'Malley Scholarship (\$2,000)



Aidan Cadogan, graduate
student,
University of Maine

Charles J. Berkel Memorial Scholarship (\$2,000)



Matthew Flores, junior,
Iowa State University of
Science and Technology

Charles J. Berkel Memorial Scholarship (\$2,000)



Julie Garry, senior,
Stevens Institute of
Technology

Terracon Consultants Scholarship (\$2,000)



Avash Ghimire, doctoral
student,
Pennsylvania State University

Charles J. Berkel Memorial Scholarship (\$3,000)



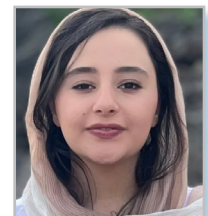
Matthew Griffiths,
senior,
Pennsylvania State University

DFI Educational Trust General Scholarship (\$4,000)



Benjamin Jalilnavaznovin,
doctoral student,
Portland State University

John O'Malley Scholarship (\$2,000)



Neda Jamaledin, doctoral
student,
North Carolina State University

2024 SCHOLARSHIP RECIPIENTS

At-Large Scholarships (continued)

Francis Gularte Scholarship
(\$2,500)



Yogesh Joshi, graduate student,
Pennsylvania State University,
Harrisburg

DFI Educational Trust General
Scholarship (\$4,000)



Veronica Kiuna,
doctoral student,
Iowa State University

Fred H. Kulhawy Memorial
Scholarship (\$1,000)



Tyler Kleinsasser,
graduate student,
SD School of Mines and Technology

John O'Malley Scholarship
(\$2,500)



Emily Leane, sophomore,
Santa Clara University

Charles J. Berkel Memorial
Scholarship (\$2,000)



Sebastian Lopez, junior,
California Polytechnic State
University, San Luis Obispo

Thomas Wysocky Civil
Engineering Scholarship
(\$5,000)



Lukas Maurer,
sophomore,
Virginia Military Institute

Charles J. Berkel Memorial
Scholarship (\$2,000)



Guadalupe Mendoza,
junior,
Texas Tech University

Thomas Wysocky Civil
Engineering Scholarship
(\$5,000)



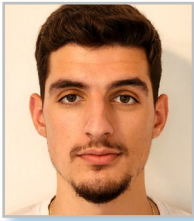
Thomas Morrison,
graduate student,
The Citadel

Clyde N. Baker, Jr.
Foundation Engineering
Scholarship (\$5,000)



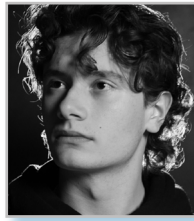
Zulkar Nain,
graduate student,
Texas A&M University

Charles J. Berkel Memorial
Scholarship (\$5,000)



Kristo Nasto, senior,
Rochester Institute of Technology

Charles J. Berkel Memorial
Scholarship (\$3,000)



Giulio Rasi, sophomore,
Rochester Institute of Technology

Charles J. Berkel Memorial
Scholarship (\$5,000)



Saad Rehmatullah, junior,
New Jersey Institute of Technology

Charles J. Berkel Memorial
Scholarship (\$2,000)



JoAnna Shafer, junior,
The University of Akron

DFI Educational Trust
General Scholarship
(\$5,000)



William Shaffer,
doctoral student,
University of California, Irvine

Charles J. Berkel Memorial
Scholarship (\$2,000)



Ali Sozen,
junior,
Rutgers University

Charles J. Berkel Memorial
Scholarship (\$3,000)



Robert Stepien, senior,
Stevens Institute of
Technology

Thomas Wysocky Civil
Engineering Scholarship
(\$5,000)



Alicia Walburger,
doctoral student,
Brigham Young University

Francis Gularte
Scholarship (\$2,500)



Ziyi Wang,
doctoral student,
Pennsylvania State University

2024 GRANT RECIPIENTS & COMPETITION WINNERS

Congratulations to the five WiDF Grant Recipients



The DFI Educational Trust awarded five recipients for the Women in Deep Foundations (WiDF) Professional Development Grants to women working in the deep foundations industry. These grants, of \$1,750 each, provided attendance at DFI49 in Aurora, Colorado, October 7-10. The grant included complimentary conference registration and covered related expenses for attending the conference.

These grants were awarded during the conference at the 8th Annual WiDF Networking Reception. Since 2015 the Trust's WiDF Fund has awarded over \$70,000 in grants.

Congratulations to the recipients:



**Ankitha Arvan, Co-Director,
Advanced Research and
Technical Operations,
Florida International
University**



**Paola Bandini, Professor of
Civil Engineering,
New Mexico State
University**



**Jenny Earle, Geotechnical
Engineer,
Isherwood Geotechnical
Engineers**



**Adara Getsy, Project
Engineer,
Nicholson Construction
Company**



**Ailie Vuper, Senior Staff
Engineer,
LANGAN Engineering and
Environmental Services LLC**

Congratulations to the Student Paper Competition Winner

For over 20 years, DFI and the DFI Educational Trust annually hold the Student Paper Competition as a way to bring together practice, studies, and research.



**John Huntoon,
Ph.D., EIT, recent
graduate of the
geosystems
program at the
Georgia Institute
of Technology,
won the DFI**

Educational Trust Student Paper Competition for his research on root-inspired ground anchors. His paper, "Analytical Model of In-Situ Root-Inspired Ground Anchor Actuation and Pullout," is based on research developed at Georgia Tech. Now leading BioBilt Infrastructure Systems, he is working to commercialize this innovative anchoring technology. Huntoon presented his work at DFI49.



John Huntoon's Analytical Model of In-Situ Root-Inspired Ground Anchor Actuation and Pullout

CUMULATIVE SCHOLARSHIP AWARDS SINCE INCEPTION: 2008 – 2024

\$2.14 Million in Total Scholarship Awards

Scholarships were awarded to high school, undergraduate, and graduate students. The total amount of scholarships and awards includes **\$41,000** in scholarships awarded by the Trust to college-bound high school seniors participating in the **ACE Mentor Program in California, Maryland, New Jersey, New York, North Carolina, and Washington**.

\$100,000 - \$200,000+ \$247,500 University of Illinois, Urbana-Champaign \$217,500 Carnegie Mellon University \$190,250 University of California, Berkeley \$182,000 City College of New York \$141,500 University of Cincinnati \$137,000 Auburn University \$128,000 Manhattan University \$117,500 University of Houston	\$30,500 Virginia Polytechnic Institute and State University \$27,000 Iowa State University \$23,000 Oregon State University \$22,500 South Dakota School of Mines and Technology \$22,250 University of Colorado, Boulder \$21,000 Brigham Young University \$11,000 - \$20,999 \$20,250 University of Arkansas \$19,000 California Polytechnic State University, Pomona \$18,000 Rochester Institute of Technology \$17,475 Gonzaga University \$17,250 California Polytechnic State University, San Luis Obispo \$16,500 University of South Carolina \$15,000 Queen's University (Ontario) San Diego State University \$14,250 North Dakota State University \$13,250 University of California, Davis \$12,500 Western University (Ontario) \$12,000 Hofstra University Stevens Institute of Technology University of New Hampshire \$11,500 Rose-Hulman Institute of Technology	\$6,000 - \$10,999 \$10,000 California State University, Long Beach The Citadel, Military College of South Carolina Virginia Military Institute \$9,500 McMaster University (Ontario) \$8,000 Portland State University \$7,500 University of Idaho University of Waterloo (Ontario) \$7,250 Northwestern University \$7,000 New Jersey Institute of Technology University of Akron University of Maine University of Missouri, Columbia \$6,500 Santa Clara University University of Rhode Island \$6,250 Kent State University \$6,000 University of Toronto (Ontario) \$4,000 - \$5,999 \$5,000 Angelo State University Michigan Technological University Montana Tech The Georgia Institute of Technology University of California, Irvine University of Central Florida University of Notre Dame University of Oklahoma University of South Florida University of Washington \$4,750 Clemson University	\$4,500 Penn State University, Harrisburg Texas Tech University University of Michigan \$4,250 The University of Texas at Arlington \$4,000 Mississippi State University Rutgers University The College of New Jersey University of Kentucky \$2,000 - \$3,999 \$2,500 Toronto Metropolitan University (formerly Ryerson Univ) University of Massachusetts at Amherst \$2,250 New Mexico State University University of Delaware \$2,000 Arizona State University Ball State University Bucknell University Clarkson University Lafayette College Lawrence Technological University Louisiana State University Massachusetts Institute of Technology New York City College of Technology North Carolina State University Rensselaer Polytechnic Institute St. Petersburg University of Mines Tufts University University at Buffalo-State University of NY University of Florida University of Georgia University of Maryland University of New Orleans University of North Carolina, Charlotte University of Wyoming UWM & University of Tennessee, Knoxville Villanova University
\$41,000 - \$99,999 \$72,500 Purdue University \$70,750 NYU Tandon School of Engineering \$50,000 Penn State University \$48,000 Texas A&M University \$41,000 ACE Mentor Program, CA, MD, NJ, NY, NC, WA	\$21,000 - \$40,999 \$39,000 Drexel University University of Pittsburgh \$34,000 Washington State University		

SCHOLARSHIP FUNDS AT-A-GLANCE

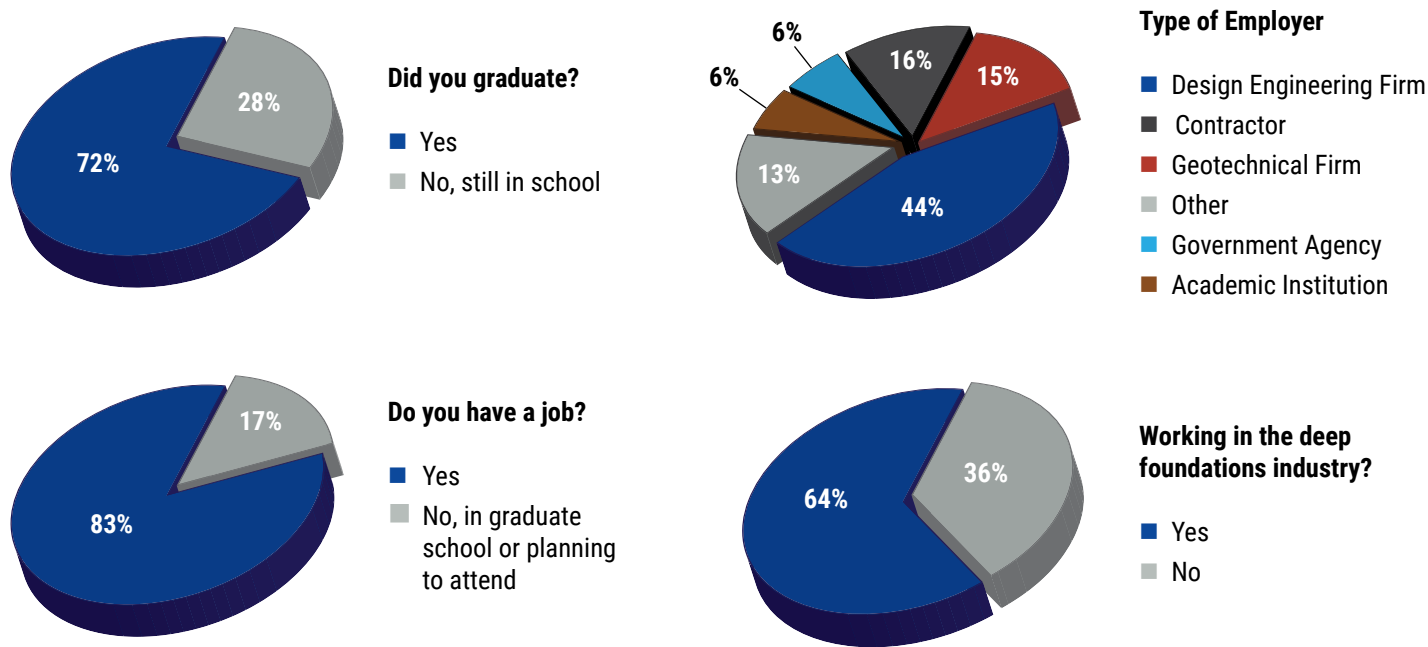
Fund	Year Established	Annual Awards	Purpose/Institutions
Hal Hunt Lecture Fund	2008	Varies	Funds honorarium for the Hal Hunt Lecture
Paul De Bruyn Memorial Student Scholarship Fund	2008	Varies	Provides engineering students with grants to defray travel and other costs of attending DFI conferences and events
Charles J. Berkel Memorial Scholarship Fund	2008	\$50,000*	At-Large. Any accredited college or university in the U.S. Also, at these specific schools: University of California, Berkeley, University of Houston, and University of Illinois, Urbana-Champaign
Stanley Merjan CCNY Civil Engineering Scholarship Fund	2010	\$15,000	City College of New York
Menard Carnegie Mellon Scholarship Fund	2012	\$10,000-\$20,000	Carnegie Mellon University
DFI Trust General Scholarship Fund	2012	\$10,000-\$25,000	At-Large. Any accredited college or university in the U.S.
Larry P. Rayburn University of Cincinnati Civil Engineering Scholarship Fund	2012	\$10,000-\$15,000	University of Cincinnati
Francis Gualarte Civil Engineering Scholarship Fund	2013	\$5,000	At-Large. Any accredited college or university in the U.S.
Manuel A. Fine Civil Engineering Scholarship Fund	2013	\$5,000-\$10,000	Any accredited college or university in Province of Ontario, Canada
John O'Malley Civil Engineering Scholarship Fund	2013	\$6,000-\$10,000	At-Large. Any accredited college or university in the U.S.
Thomas J. Wysockey Civil Engineering Scholarship Fund	2014	\$15,000	At-Large. Any accredited college or university in the U.S. Gives special consideration to veterans
Women in Deep Foundations Fund	2014	\$8,750-\$10,500	Provides assistance to women currently employed within the deep foundations industry or academia to attend conferences and other professional activities
LANGAN Engineering and Environmental Services Legacy Fund	2015	\$25,000	Drexel University, Purdue University, University of Illinois, Urbana-Champaign, NYU/Tandon School of Engineering
Michael L. Condon Civil Engineering Scholarship Fund	2015	\$12,000-\$15,000	Cal Poly, San Luis Obispo, Cal Poly, Pomona, San Diego State, Santa Clara University, University of California, Davis, Oregon State University, Washington State University, Montana Tech, University of Colorado, Boulder and Virginia Tech
Penn State University Civil Engineering Scholarship Fund	2015	\$7,500	Penn State University
University of Pittsburgh Civil Engineering Scholarship Fund	2015	\$7,500	University of Pittsburgh
George J. Tamaro Manhattan University Civil Engineering Scholarship Fund	2016	\$15,000	Manhattan University
Fred H. Kulhawy Memorial Scholarship Fund	2018	\$1,000	At-Large. Any accredited college or university in the U.S.
DFI Ed Trust/Terracon Consultants Scholarship Fund	2019	\$2,000	At-Large. Any accredited college or university in the U.S.
Clyde N. Baker, Jr. Foundation Engineering Scholarship Fund	2020	\$5,000	At-Large. Any accredited college or university in the U.S.
Goble Rausche Likins Scholarship Fund	2020	\$7,500-\$10,000	Civil engineering, electrical engineering, and computer science students with prior employment, co-op, or internship experience with a civil engineering application. Any accredited college or university in the U.S.
M. Byrl and Frances M. Williams Fund	2024	Varies	Provides funding for research, student projects, travel and related DFI business, and other such activities at Gonzaga University
William F. Loftus Memorial Scholarship	2024	\$5,000	Manhattan University

*Minimum annual disbursement per the wishes of the donor; annual amount may be larger depending on investment return.

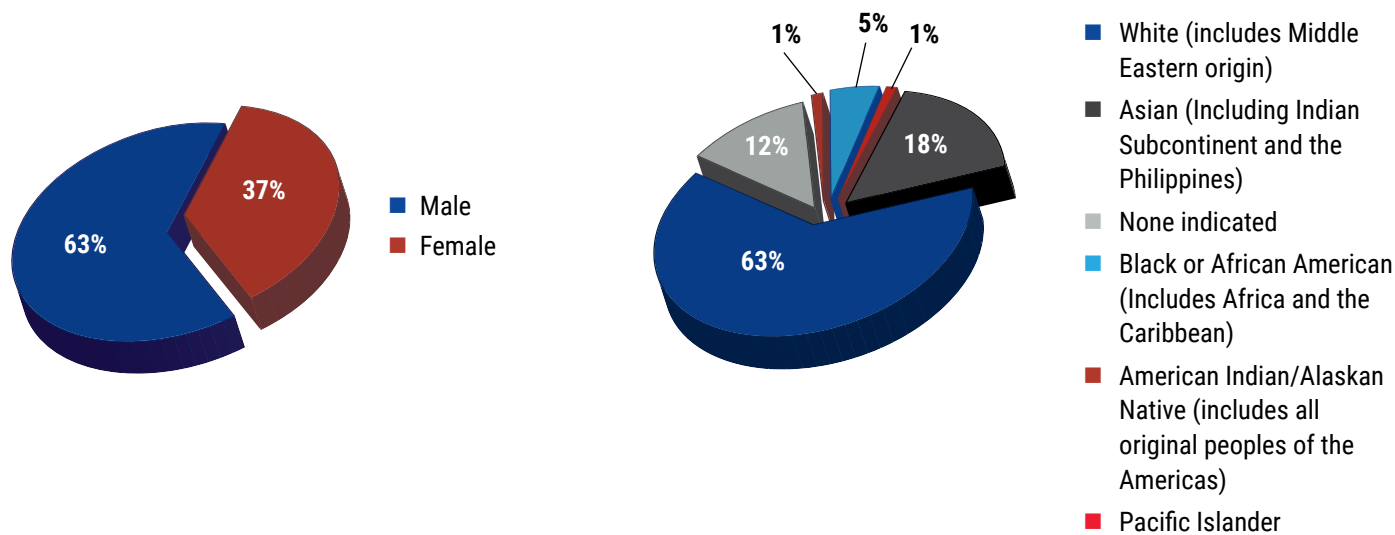
SCHOLARSHIP RECIPIENT DEMOGRAPHICS

Where are the Trust's Scholarship Recipients?

In the early part of every year, the Trust conducts a survey of scholarship recipients who graduated (or were scheduled to graduate) the previous year. The survey asks those that have graduated whether they have obtained employment or are going on to graduate school, and, if employed, the type of employer they work for and if that employment is in the deep foundations industry. The following are average percentages for student recipients surveyed between 2014-2024:



Who are the Trust's Scholarship Recipients?



NOTE: 16% of recipients identified as Hispanic/Latino in addition to indicating their race/ethnicity.

2024 FUNDRAISING EVENTS

5K Fun Run/Walk

The Annual 5K Fun Run/Walk took place in early October during the DFI Annual Conference at the Gaylord Rockies Resort and Convention Center in Aurora, Colorado. Participants enjoyed a scenic 3-mile race through the beautiful landscape surrounding the convention center, with views of the Rockies along the entire route. The 2024 event raised approximately \$21,000. Congratulations to the winner of the women's division, Mary Nodine, Federal Highway Administration, and men's division winner, Darius Kubicek of Berkel & Company Contractors, Inc. Proceeds from the event benefit the Trust's General Fund.



5K participants at DFI49



Pennsylvania Golf Outing

Celebrating its 19th year, the Pennsylvania Golf Outing was held at Montour Heights Golf Club in Pittsburgh, Pennsylvania. This Trust event benefits DFI Educational Trust's University of Pittsburgh and Penn State University scholarship funds. Since 2006, this Golf Outing has raised nearly \$550,000 in net proceeds for the DFI Educational Trust. Part of these proceeds have endowed the DFI Educational Trust Menard Carnegie Mellon Scholarship Fund. The Pitt and Penn State Funds each awarded \$7,500 in 2024, totaling \$60,000, since their inauguration in 2020.



Golfers hitting the links at the Pennsylvania Golf Outing at Montour Heights Country Club.

New Jersey Golf Outing

For the 13th year, the ACE Mentor Program of New Jersey and the DFI Educational Trust hosted their annual New Jersey



Golfers hitting the links during the New Jersey Golf Outing at Lake Mohawk Golf Club.

Golf Outing fundraiser at Lake Mohawk Golf Club in Sparta, New Jersey. This event raised \$30,000 divided equally by the two organizations. The DFI Trust's net proceeds benefit the Trust's General Fund and supports scholarships that benefit college students studying toward careers in the deep foundations, architecture, engineering and construction industries.

California Golf Outing

The DFI Educational Trust's Annual California Golf Outing once again brought together individuals and companies who are committed to supporting our efforts to help young students discover the



Dublin Ranch Golf Course

rewards of a career in the deep foundations industry. For the 12th year, golfers and friends of the Trust gathered in Dublin, California, at the beautiful Dublin Ranch Golf Course. The 2024 California Golf Outing netted \$36,000, which benefited the Trust's General Fund.

Giving Tuesday

In 2024, the DFI Trust celebrated a decade of participating in #GivingTuesday,



a global day of giving. Since 2015, Giving Tuesday has raised over \$100,000, and in 2024 \$10,000 was raised to support DFI scholarship programs that help engineering students achieve their educational dreams. Interested in making a year-end gift in 2025? DFI continues to host a #GivingTuesday donation page each fall. Donations made to the DFI Trust are tax deductible to the extent permitted by law. You can potentially double your impact by pursuing a company match for donations made towards #GivingTuesday or any donation made at www.trust.dfi.org/donate.

2024 FUNDRAISING EVENTS

Annual Gala Dinner

The DFI Educational Trust's Annual Gala Dinner continues to bring together individuals and companies who are committed to supporting our efforts to help young students discover the rewards of a career in the deep foundations industry. The Trust's 17th Gala Fundraising Dinner was held on November 14 at Terrace on the Park, Corona, New York. Proceeds from this event benefitted the newly established William F. Loftus Memorial Scholarship Fund.

Two seniors from Manhattan University each received \$2,500 from the Loftus Fund. The recipients were Alexandra Castellano and Mark Markic.

In addition to the scholarship winners, students from the Manhattan University Jazz Ensemble joined as the featured entertainment.



Dr. Anirban De and Dr. Mehdi Omidvar, faculty at Manhattan University, pictured with University students and 2024 recipients of the Loftus and Tamara scholarships.

WiDF Celebrates 10 Years at DFI49

The Trust and the DFI Women in Deep Foundations (WiDF) Committee celebrated the committee's 10th anniversary at DFI49 and recognized the recipients of the WiDF Professional Development Grants, which funded the winners' attendance at the conference.



From left, Lucky Nagarajan with 2024 grant recipients, Estela León Aguilar, Gaby Vasquez, and Emma Migneault on the red carpet at DFI49's WiDF Networking Reception.

WiDF Receptions at SuperPile and S3

For those who have joined us in previous years at S3 and SuperPile, both include a popular networking reception in support of the WiDF Committee. Theresa Engler, DFI executive director, shares, "each year, the WiDF receptions bring together a remarkable group of professionals, fostering mentorship, collaboration, and meaningful conversations that drive progress for women in the industry." We thank the hard work of the WiDF Committee members, both men and women and its outgoing chair, Lucky Nagarajan. We are grateful for all of those who have supported the work of the committee since its inception ten years ago.



SuperPile '24



WiDF committee's annual networking reception at S3



Thank You



The DFI Educational Trust gratefully acknowledges the Deep Foundations Institute for their generosity in providing in-kind contributions of staff time, office space, supplies, and other valuable resources. This support allows the Trust

to direct more funds to scholarships, programs, and services for the individuals in our industry.

2024 FINANCIAL REPORT

Financial Position

As of December 31, 2024

Assets	\$5,097,573
Liabilities	\$30
Net Assets.....	\$5,097,543

Statement of Activities 2024

Revenues

Contributions	\$173,637
Investment Income	\$246,065
Fundraising events (net)	\$107,073
TOTAL REVENUES.....	\$526,775

Expenses/Disbursements

Scholarship Awards	\$226,825
Women in Deep Foundations Grants	\$8,750
Paper Competition Awards.....	\$1,763
Administrative Expenses.....	\$30,993
TOTAL EXPENSES/DISBURSEMENTS	\$268,331
NET INCOME.....	\$258,444

2024 MAJOR DONORS

Major donors are those who have contributed \$1,000 or more in 2024.

Goble Rausche Likins Scholarship Fund

Brent Robinson

Francis Gularte Civil Engineering Scholarship Fund

Francis and Gloria Gularte

LANGAN Engineering and Environmental Services Legacy Fund

Rudolph Frizzi

William F. Loftus Memorial Scholarship Fund

Theresa and Herb Engler
Rudolph Frizzi
Desmond and Alice Lawler
John P. Lawler
LMW Engineering Group
Bill and Fran Loftus
Mary Loftus
Peter McGroddy
McLaren Engineering Group
Richard Goettle, Inc.

Penn State Scholarship Fund

Equipment Corporation of America
Star Iron Works, Inc.

University of Pittsburgh Scholarship Fund

Star Iron Works, Inc.

M. Byrl and Francis M. Williams Fund

M. Byrl and Francis M. Williams

Women in Deep Foundations Fund

Bauer Foundation Corp
Berkel & Company
Equipment Corporation of America
Green Infrastructure Partners
GRL
Malcolm Drilling Company
Nicholson Construction Company
Nucor Skyline
Pile Dynamics
Tarra Engineering
TEI Rock Drills, Inc.
Universal Engineering Services

Sustaining Members Fund (General Fund)

Advanced Geosolutions Inc
Beaty Construction
Rudolph Frizzi
Lally Pipe & Tube
Magnum Piering, Inc.
Morris Shea Bridge Co.
Schnabel Foundation
Lori and David Simpson
Terracon
Tom Richards
X-CD Technologies, Inc.

2024 MAJOR EVENT SPONSORS

Major Event Sponsors are those who have contributed \$1,000 or more at the respective events.

New Jersey Golf Outing

(Benefits the DFI Educational Trust General Fund)

Platinum

Alston Construction Company
IMC Construction
Rockefeller Group
Tri-State Light & Energy, Inc.

Reception & Dinner

Blue Rock Construction
Gensler
RC Andersen, LLC

Annual 5K Run

(Benefits the DFI Educational Trust General Fund)

Platinum

Fenagh Engineering and Testing
Forgen

Gold

Menard USA

Silver

Crux Subsurface, Inc.
Green Infrastructure Partners
JD Fields & Company, Inc.
PVE Equipment USA

California Golf Outing

(Benefits the DFI Educational Trust General Fund)

Platinum

American Piledriving Equipment
Drill Tech Drilling & Shoring
Morgan Stanley Smith Barney
Nor Cal Carpenters Union
PJ's Rebar

2024 New York Gala Dinner

(Benefits the William F. Loftus Memorial Scholarship Fund)

Platinum

Pipe and Piling Supplies Ltd.
Trinity Products Inc.

Gold

Clydesdale Steel
GMS Piling Products, LLC.
Underpinning & Foundation Skanska

Bronze

Equipment Corporation of America
KB International LLC
Menard USA
Mincon, Inc.

Women in Deep Foundations 2024 Events

American Piledriving Equipment.
Equipment Corporation of America
GEI Consultants Inc.
GRL Engineers, Inc.
Grounded Engineering, Inc.
Keller North America
LANGAN Engineering and Environmental Services LLC
Magnum Piering, Inc.
Menard USA
Minova USA, Inc.
Nicholson Construction Company
PierTech Systems
ROC Equipment
TEI Rock Drills, Inc.
Terracon
Treviicos

MAJOR CONTRIBUTORS 2005 - PRESENT

We thank the following companies and individuals for their continued support of the Trust over the years with their donations and event sponsorships

Legacy | \$1 Million and Above

Berkel & Company Contractors, Inc.

Benefactor | \$250,000-\$999,999

LANGAN Engineering and Environmental Services LLC
Richard Goettle, Inc.

Leader | \$100,000-\$249,999

Condon-Johnson
Equipment Corporation of America
Keller North America/Case Foundation
Menard USA
Thatcher Foundations Inc.

Premier | \$25,000-\$99,999

American Piledriving Equipment
BAUER Equipment America
Berminghammer
CZM Foundation Equipment
Foundation Constructors Inc.
Rudolph Frizzi
GEI Consultants Inc.
David T. Gockel
GRL Engineers, Inc.
Francis Gularte
Hayward Baker
Lally Pipe & Tube
Loadtest
Magnum Piering, Inc.
David and Emily Merjan
Stanley Merjan
Moretrench
Mueser Rutledge Consulting Engineers
Nicholson Construction Company
Nucor Skyline
Ontario Association of Foundations Specialists
Pile Dynamics, Inc.
Pipe and Piling Supplies LTD.
PJ's Rebar
Star Iron Works, Inc.
TEI Rock Drills, Inc.
Terracon
Trinity Products Inc.
Underpinning & Foundations Skanska
Urkkada Technology Ltd
M. Byrl and Frances Williams

Cornerstone | \$10,000-\$24,999

ARUP
Atlas Copco Construction Mining Technique
Bay Crane Service, Inc.
Brayman Construction Corp.
Brosamer & Wall
Clydesdale Steel
Gerard J Condon (Stephen Condon)
Gerard J. Condon (Katherine Condon)
DFP Foundation Products, LLC
Nicholas DeRose

Debbie & Tom Farrell-Cove Property Group
GMS Piling Products, LLC.

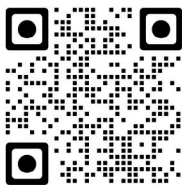
Michael Garbooshian
Hammer & Steel
Patrick Hannigan
Heavy Construction Association of Ontario
Heavy Construction Association of Toronto
Mohamad Hussein
ICE®-International Construction Equipment, Inc.
Keller North America
Kelly Tractor Co
Kiewit Foundations Company
L.B. Foster Company
George Leventis
Garland Likins, Jr.
Mary Loftus
John Malcolm
Malcolm Drilling Company
McCossin Foundations
Carmelo M. Morgano
Pileco, Inc.
George Piscsalko
PJS Group
Frank Rausche
Larry Rayburn
Mark J. Rice
ROC Equipment LLC
Rockefeller Group
Samuel Roll Form Group
Schnabel Foundation
Shoreline Steel South
Silman
Steven M. Hain Co
STV, Inc
The Conco Companies
Treviicos
Scott Webster

Supporter | \$5,000-\$9,999

Air Equipment Corporation
AWT Environmental Services Inc
Bauer Equipment America TX
BDG-CPA's
Bittner-Shen Consulting Engineers
Brasfond Fundacoes Especiais S/a
C.E. Anderson & Associates
Cajun Deep Foundations
Center Rock Inc.
Champion Equipment Sales
Dan Brown and Associates
David Coleman
Commercial Metals Company
Jerry Condon
E.E. Cruz Co. Inc.
Theresa and Herb Engler
Farrell Design-Build Inc.
Fenagh Engineering and Testing
Fenagh, LLC
Ferrara Bros. Building Materials Corp.

Forgen
Ron Fuerst
Furino & Sons, Inc.
Ben C. Gerwick
Gensler
Geokon Inc.
Giken America Corporation
Golder Associates Inc.
Graycor Industrial Constructors Inc.
Chris Hager
Hathaway Dinwiddie
Bernhardt Hertlein
Isherwood Associates
J.D. Fields & Company, Inc.
Jinnings Equipment LLC
KB International LLC
Kleinfelder
Gloria Kulhawy
John P. Lawler
Liberty Mutual Group Inc.
Liebherr USA
LMW Engineering Group
Shirin and Pheroze Madon
Mincon, Inc.
Morgan Stanley Smith Barney
North American Construction Group
Peckar & Abramson
PennDrill Manufacturing
Petrifond Foundation Co. LTD
Philip Tringale
Pile Drivers Local 34
Pio's Trucking Company
Pittsburgh Pipe
Alan Poeppel
Power Engineers
Brent Robinson
Rollo & Ridley, Inc.
Saltus LLC
Schnabel Engineering, Inc.
Michael Semeraro
Shimmick Construction Company Inc.
Richard Short
Lori and David Simpson
Specrete-IP Incorporated
Strata Earth Services, LLC
Stressbar Systems
Stroer & Graff, Inc.
George Tamaro
Peter Tamaro
The Carpenter Rigging Group
The Derrick Family Foundation
The Laquila Group
Thornton Tomasetti
Turner Construction Company
Webcor Builders
Weeks Marine, Inc.
Williams Form Engineering Corp.

To make a Donation to the
DFI Educational Trust visit
www.trust.dfi.org/donate



*The DFI Educational Trust is a 501 (c)(3)
nonprofit organization. Your contribution is
tax deductible to the extent permitted by law.*



DFI EDUCATIONAL TRUST

326 Lafayette Avenue
Hawthorne, NJ 07506
Tel: (973) 423-4030
staff@dfi.org • www.trust.dfi.org