



## SAILING INSTRUCTIONS YOUTH 420 REGATTA August 17, 2021

### Preamble

We are pleased to announce the 18<sup>th</sup> annual Nantucket Race Week and the 49<sup>th</sup> Opera House Cup Regatta, August 14 – 22, 2021. Proof of Covid vaccination will be required for social events and masks will be required for indoor events.

### ORGANIZING AUTHORITY

Nantucket Race Week, L.L.C.

Regatta website [www.nantucketraceweek.org](http://www.nantucketraceweek.org)

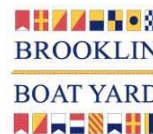
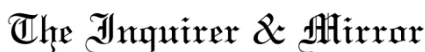
### HOSTS

The Nantucket Yacht Club (NYC), Great Harbor Yacht Club (GHYC), Nantucket Community Sailing (NCS) and the Nantucket Race Week Committee (NRW).

Nantucket Race Week merchandise and gear is available at Race Week Headquarters, 33 Main Street daily or online at the [www.nantucketcommunitysailing.org/page/store](http://www.nantucketcommunitysailing.org/page/store).

---

## Thank you to our Nantucket Race Week Corporate Sponsors





SAILING INSTRUCTIONS  
Youth 420 Regatta  
A Part of Nantucket Race Week  
August 17, 2021

The notation '[DP]' in a rule in the SI means that the penalty for a breach of that rule may, at the discretion of the protest committee, be less than disqualification.

**1. RULES**

- 1.1. The Regatta will be governed by the *Rules* as defined by *The Racing Rules of Sailing*, including Appendix V1 (Alternative Penalties).
- 1.2. All competitors, skippers and crew, will be required to sign a Waiver prior to the regatta.

**2. CHANGES TO THE SAILING INSTRUCTIONS**

- 2.1. Any changes to the Sailing Instructions will be posted at least 2 hours prior to the affected even on the Notice Board or verbally by the signal vessel prior to the Warning Signal.
- 2.2. The Race Committee may make changes to the Sailing Instructions by hail to each boat before the Warning Signal.

**3. COMMUNICATION WITH COMPETITORS**

- 3.1. The official notice board is online at [www.nantucketraceweek.org](http://www.nantucketraceweek.org)
- 3.2. The race office is located at NCS, 4 Winter Street.
- 3.3. The following communications may be made by the race committee. These include courses, course changes, shortening, postponement, abandonment, and recalls.

**4. CODE OF CONDUCT**

**[DP]** Competitors and support persons shall comply with reasonable requests from race officials.

**5. SIGNALS MADE ASHORE**

There will be no signals ashore.

**6. SCHEDULE**

- 6.1. There will be a Competitors Meeting at 1100.
- 6.2. The first warning signal will be 1300.
- 6.3. Multiple races are planned.

**7. CLASS FLAGS**

There are no class flags.

**8. RACING AREAS**

All races will be sailed in Area 2 or Area 3 as in Addendum A and will be announced on VHF 73 one hour prior to the first warning.

**9. COURSES**

The courses to be sailed are shown in Addendum B, including the approximate angles between legs and the order in which marks are to be passed.

**10. MARKS**

All marks will be red balls.



SAILING INSTRUCTIONS  
Youth 420 Regatta  
A Part of Nantucket Race Week  
August 17, 2021

11. **THE START**

- 11.1. Repeated short sound signals will be made ten seconds before the warning signal.
- 11.2. Races will use the Audible-Signal Racing System of Appendix U (3-minute dinghy starts).
- 11.3. The Starting Line will be between and orange flag on the signal vessel at the starboard end and the course side of the port end starting mark
- 11.4. The two classes may be started separately or together.
- 11.5. Boats may not start more than 5 minutes after their starting signal.
- 11.6. If any part of a boat's hull is on the course side of the starting line the race committee will attempt to hail, over VHF and/or by voice, the sail numbers of those boats after the starting signal. The failure to hail her number, failure to hear such a hail, and the order and timing of such hails, will not be grounds for a request for redress. This changes RRS 62.1(a).

12. **CHANGE IN THE NEXT LEG OF THE COURSE**

Courses will not be changed during a race although marks may be adjusted without signaling at the previous mark. This changes RRS 33.

13. **THE FINISH**

The finishing line will be between a blue flag on a race committee vessel and the course side of a nearby mark.

14. **PENALTY SYSTEM**

- 14.1. After *starting* and before *finishing*, the starting and finishing lines are *obstructions*, and boats are prohibited from sailing through them. Boats may not correct this error and will be disqualified without a hearing. This changes RRS 28 and A5.

15. **TIME LIMIT**

- 15.1. The time limit for the first boat to sail the course and finish will be 45 minutes.
- 15.2. Boats failing to finish within 10 minutes after the first boat sails the course and finishes will be scored Did Not Finish without a hearing. This changes RRS 35, A4 and A5.

16. **PROTESTS AND REDRESS**

- 16.1. Competitors are expected to sail by the rules and exonerate themselves when they have broken a rule
- 16.2. Protest forms are available from the Protest Desk.
- 16.3. Protests shall be delivered within 60 minutes after the race committee finish vessel docks. The time will be posted.
- 16.4. Hearings will be held as soon as possible after racing.
- 16.5. The location of the Protest Desk and the Protest Hearings will be announced at the Competitors Meeting along with any additional restrictions or regulations.

17. **SCORING**

- 17.1. One completed race constitutes a regatta
- 17.2. When five or more races are completed, one worst score will be excluded, as permitted by RRS 90.3(b), from that boat's series score.

18. **SAFETY**

- 18.1. All competitors shall wear, while on the water, US Coast Guard approved PFD, except briefly while changing or adjusting clothing or personal equipment. This changes RRS 40. The penalty for breach of this rule is DSQ, without a hearing. This changes RRS 63.1.



SAILING INSTRUCTIONS  
Youth 420 Regatta  
A Part of Nantucket Race Week  
August 17, 2021

- 18.2. All boats are requested to check-in with the race committee before the start of the first race by sailing by the signal vessel on starboard and hailing their sail number and receiving confirmation from the race committee.
- 18.3. A boat that retires from the racing area shall notify the race committee as soon as possible.

**19. CLEAN REGATTA**

Nantucket Race Week is committed to maintaining Nantucket's clean waters and shores, and is certified by Sailors for the Sea as a gold-level Clean Regatta. All NRW participants are encouraged to follow the goals and requirements of the Clean Regattas program.

**20. DISCLAIMER OF LIABILITY**

Sailing is an activity that has an inherent risk of damage and injury. Competitors in this event are participating entirely at their own risk. See *RRS 4, Decision to Race*. The race organizers, Nantucket Race Week L.L.C., the Nantucket Yacht Club, Great Harbor Yacht Club, Nantucket Community Sailing, Race Committee, Protest Committee, Technical Committee, volunteers, sponsors, agents, employees, or any other organization or official providing services at the request of any of the foregoing in connection with the events will not be responsible for damage to any boat or other property, or the injury, disease or illness to any person sustained as a result of participation in this event. By participating in this event, each competitor (owners, skippers, crews and support persons) agrees to release the race organizers and all persons and groups listed above from any and all liability associated with such competitor's participation in this event to the fullest extent permitted by law.

**21. FURTHER INFORMATION**

21.1. Massachusetts Boating Regulations

21.2. Nantucket Community Sailing

508-228-6600

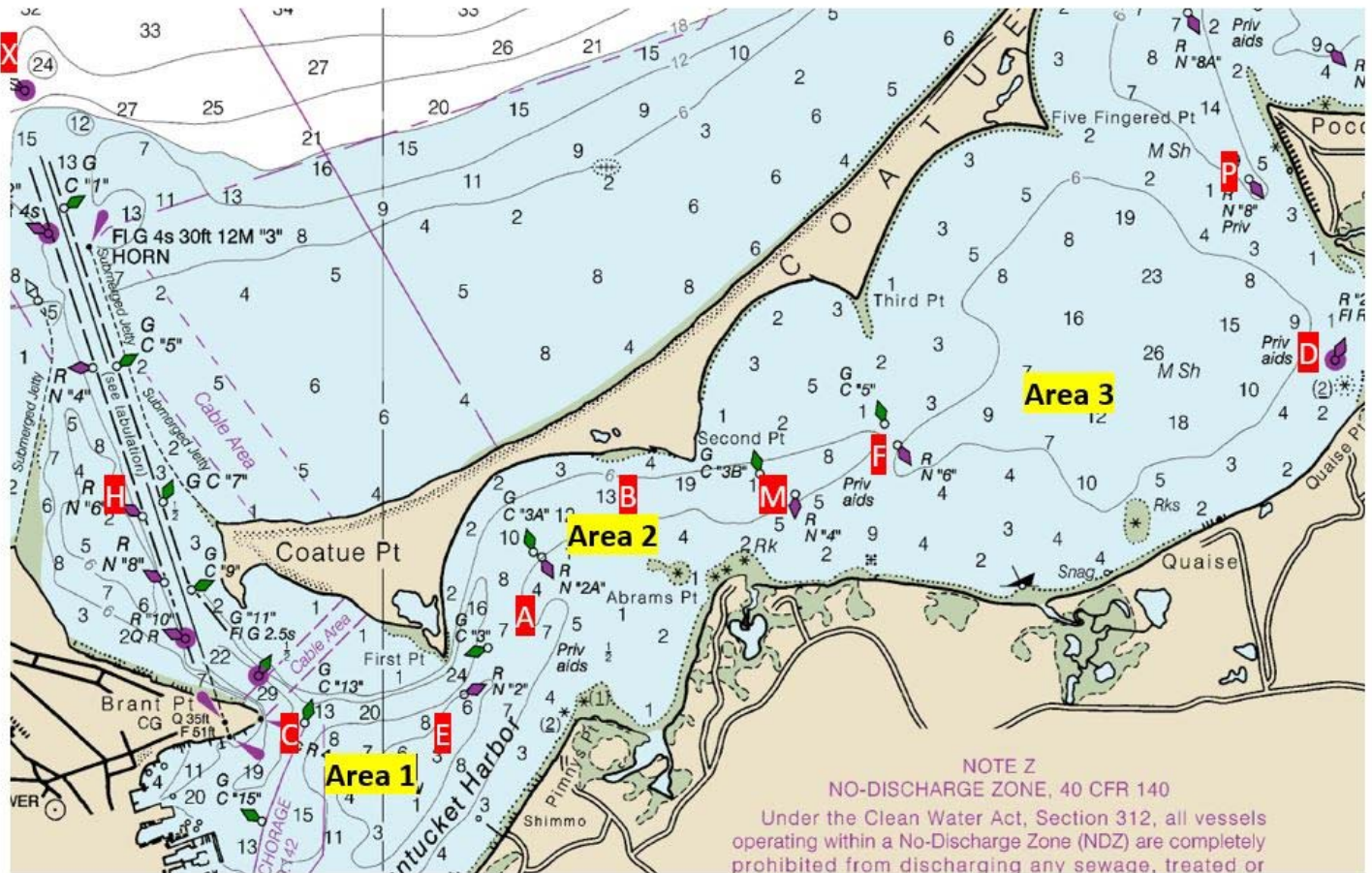
Website [www.nantucketraceweek.org/page/nrw](http://www.nantucketraceweek.org/page/nrw)



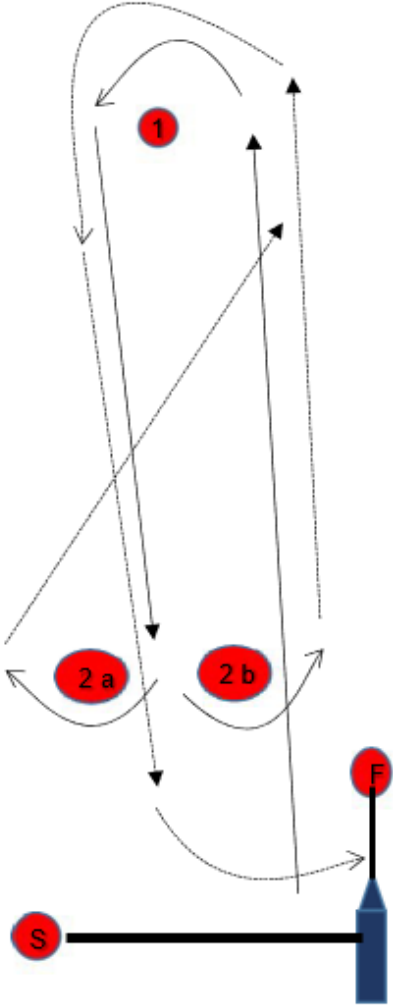
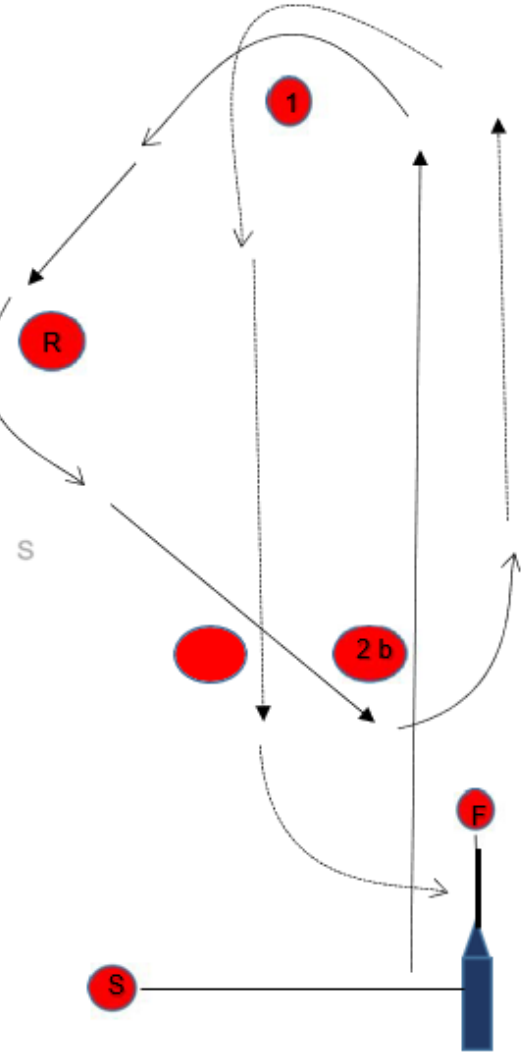
SAILING INSTRUCTIONS  
Youth 420 Regatta  
A Part of Nantucket Race Week  
August 17, 2021

Addendum A

Racing Areas and Permanent Marks



**Addendum B – Courses**

Course "W"	Course "T"
 <p>The diagram for Course "W" shows a start line (S) on the left and a finish line (F) on the right, both marked with red circles. A thick black line connects S and F. The course path is indicated by arrows: from S, the path goes up and right to marker 1 (red circle), then down and left to marker 2a (red circle), then up and right to marker 2b (red circle), then down and left to marker 1, and finally down and right to the finish line F.</p>	 <p>The diagram for Course "T" shows a start line (S) on the left and a finish line (F) on the right, both marked with red circles. A thick black line connects S and F. The course path is indicated by arrows: from S, the path goes up and right to marker 1 (red circle), then down and left to marker R (red circle), then down and right to marker 2b (red circle), then up and left to marker 1, and finally down and right to the finish line F.</p>
<p>Start, 1 (port), between 2a (starboard) and 2b (port), 1 (port), finish</p>	<p>Start, 1 (port), R (port), 2b (port), 1 (port), finish</p>