



## SAILING INSTRUCTIONS ONE DESIGN REGATTA August 14 and 21, 2021

### Preamble

We are pleased to announce the 18<sup>th</sup> annual Nantucket Race Week and the 49<sup>th</sup> Opera House Cup Regatta, August 14 – 22, 2021. Proof of Covid vaccination will be required for social events and masks will be required for indoor events.

### ORGANIZING AUTHORITY

Nantucket Race Week, L.L.C.

Regatta website [www.nantucketraceweek.org](http://www.nantucketraceweek.org)

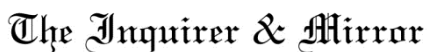
### HOSTS

The Nantucket Yacht Club (NYC), Great Harbor Yacht Club (GHYC), Nantucket Community Sailing (NCS) and the Nantucket Race Week Committee (NRW).

Nantucket Race Week merchandise and gear is available at Race Week Headquarters, 33 Main Street daily or online at the [www.nantucketcommunitysailing.org/page/store](http://www.nantucketcommunitysailing.org/page/store)

---

## Thank you to our Nantucket Race Week Corporate Sponsors





# SAILING INSTRUCTIONS


## One Design Regatta

### A Part of Nantucket Race Week

### August 14 and 21, 2021

The notation '[DP]' in a rule in the SI means that the penalty for a breach of that rule may, at the discretion of the protest committee, be less than disqualification.

#### 1. **RULES**

- 1.1. The Regatta will be governed by the *Rules* as defined by *The Racing Rules of Sailing*, including Appendix V1 (Penalty At The Time Of An Incident) and Appendix T (Arbitration).
- 1.2. NYC Policies and Protocols, and local Nantucket fleet rules as published on the official noticeboard will apply.
- 1.3. When flag Y  is displayed, prior to the warning signal, from the race committee signal vessel:
  - 1.3.1. Rhodes-19s shall not use spinnakers.
  - 1.3.2. PFDs (lifejackets) shall be worn by all competitors.
  - 1.3.3. RRS 44.3 Scoring Penalty will be in effect, instead of RRS V1 (turns).
- 1.4. No paid member of the crew may take the helm at any time except to avoid collision or imminent danger.
- 1.5. All competitors, skippers and crew, will be required to sign a Waiver prior to the regatta.

#### 2. **CHANGES TO THE SAILING INSTRUCTIONS**

Any changes to the Sailing Instructions will be posted at least 2 hours prior to the affected event or within 15 minutes of the termination of any competitors' meeting.

#### 3. **COMMUNICATION WITH COMPETITORS**

- 3.1. The official notice board is online at [www.nantucketraceweek.org](http://www.nantucketraceweek.org)
- 3.2. The race office is located at NCS, 4 Winter Street.
- 3.3. On the water, the race committee will monitor VHF 73 on Race Circle One and VHF 67 on Race Circle Two for emergency transmissions.
- 3.4. The following communications may be made by the race committee. These include courses, course changes, shortening, postponement, abandonment, and recalls
- 3.5. Boats may monitor VHF, but are advised that any race committee communications are unofficial, and made either for race management purposes or as a courtesy to the competitors. As such, the race committee's use, or lack thereof, of radio communications shall not be grounds for granting redress and channel 67 n Race Circle Two to and communicate with competitors.
- 3.6. [DP]Except in an emergency, a boat that is racing shall not make voice or data transmissions and shall not receive voice or data communication that is not available to all boats.

#### 4. **CODE OF CONDUCT**

[DP] Competitors and support persons shall comply with reasonable requests from race officials.

#### 5. **SIGNALS MADE ASHORE**

Signals made ashore will be displayed from the flagpole. If a postponement is signaled ashore, '1 minute' is replaced by 'not less than 60 minutes' in Race Signal AP.

#### 6. **SCHEDULE**

- 6.1. There will be a Competitors Meeting at 1100 on each Saturday.
- 6.2. The first warning signal will be 1230 on both days of the regatta in both race circles. Subsequent races each day will be held as soon as possible after the end of the previous race.
- 6.3. Multiple races are planned.



SAILING INSTRUCTIONS  
One Design Regatta  
A Part of Nantucket Race Week  
August 14 and 21, 2021

7. **CLASS FLAGS**

7.1. For the first race, classes will start in the following order using the flags indicated for each class:

Race Circle One	Flag	Race Circle Two	Flag
Alerion		Marshall Cat 15	
Indian		12 1/2 Class	
Rhodes 19		Rainbow	

7.2. Subsequent races for a class will be started as soon as possible after all boats in that class have finished.

8. **RACING AREAS**

8.1. There will be two areas used each race day, called *Race Circle One* and *Race Circle Two*.

8.2. The racing area for each Race Circle will be one of the three Areas shown on Addendum A and will be announced at the competitors meeting every race day, and posted.

9. **COURSES**

9.1. The courses to be sailed are shown in Addendums B and C, including the approximate angles between legs and the order in which marks are to be passed.

9.2. On *Race Circle One*, no later than the warning signal, the race committee will designate the course configuration by a number on the course board followed by the marks to be rounded. See Attachment B. All marks listed are to be rounded to port (except course #6), unless signified by an "S" for a starboard rounding. The color of the posted letters has no meaning. A course without a number may also be posted with all rounding marks listed.

9.3. On *Race Circle One*, the letter "T" alongside the course number designates **twice around**.

9.4. On *Race Circle Two*, the course will be hailed from the race committee vessel. See Attachment C

10. **MARKS**

10.1. Marks on *Race Circle One* may be any of the marks described below:

Mark	Description
A	Red nun "2A" between First and Second Points
B	Red nun "2B" between First and Second Points
C	Green Can "13", off Brant Point
D	Red nun "2" near the entrance to Polpis Harbor
E	Red nun "2" off First Point
F	Red nun "6" off Third Point
G	Green inflatable drop mark



SAILING INSTRUCTIONS  
One Design Regatta  
A Part of Nantucket Race Week  
August 14 and 21, 2021

H	Red nun "6" off Jetties Beach
M	Red nun "4" off Second Point
O	Orange inflatable drop mark
P	Red nun "8" off Pocomo
X	Red & White bell buoy "NB" outside harbor entrance
Y	Yellow inflatable drop mark

- 10.2. On Race Circle One, the starting mark for Alerions will be a small orange inflatable. The starting mark for all other classes will be a small green inflatable. The green mark is not a part of the Alerion starting line.
- 10.3. The finishing mark will be a red ball.
- 10.4. All marks on Race Circle Two will be red balls.

**11. THE START**

- 11.1. The starting line will be between an orange flag on the signal vessel and the course side of a nearby mark.
- 11.2. Races on Race Circle One will be started by using RRS 26.
- 11.3. Races on Race Circle Two will use the Audible- Signal Racing System of Appendix U. The Class Flag will be displayed before the start of the sequence until after the starting signal.
- 11.4. Boats may not start more than 5 minutes after their starting signal.
- 11.5. If any part of a boat's hull is on the course side of the starting line the race committee will attempt to hail, over VHF and/or by voice, the sail numbers of those boats after the starting signal. The failure to hail her number, failure to hear such a hail, and the order and timing of such hails, will not be grounds for a request for redress. This changes RRS 62.1(a).
- 11.6. Boats whose warning signal has not been made shall avoid the starting area.

**12. CHANGE IN THE NEXT LEG OF THE COURSE**

- 12.1. To change the next leg of the course on *Race Circle One*, the race committee will move the original mark (or the finishing line) to a new position and signal all boats in accordance with RRS 33 before they begin the leg. The next mark need not be in position at that time.
- 12.2. On Race Circle Two, marks may be adjusted without signaling at the previous mark. This changes RRS 33.

**13. THE FINISH**

The finishing line will be between an orange flag on a race committee vessel and the course side of a nearby mark.

**14. PENALTY SYSTEM**

- 14.1. When flag Y is on display prior to the warning signal from the race committee signal vessel, the Turns penalties of RRS V1 are replaced by the Scoring Penalty of RRS 44.3.
- 14.2. After *starting* and before *finishing*, the starting and finishing lines are *obstructions*, and boats are prohibited from sailing through them. Boats may not correct this error and will be disqualified without a hearing. This changes RRS 28 and A5. On *Race Circle One*, the starting line *obstruction* is defined by the small orange mark and the signal vessel. If the small orange mark is not in the water, then the small green mark applies.



SAILING INSTRUCTIONS  
One Design Regatta  
A Part of Nantucket Race Week  
August 14 and 21, 2021

15. **TIME LIMIT**

- 15.1. On *Race Circle One*, the time limit for each race will be 90 minutes for the first boat to sail the course and finish. Boats still racing more than 30 minutes after the first boat finishes will be scored DNF, without a hearing. This changes RRS 35 and A5.
- 15.2. On *Race Circle Two*, the time limit for each race will be 60 minutes for the first boat to sail the course and finish. Boats still racing more than 20 minutes after the first boat finishes will be scored DNF, without a hearing. This changes RRS 35 and A5.

16. **PROTESTS AND REDRESS**

- 16.1. Competitors are expected to sail by the rules and exonerate themselves when they have broken a rule.
- 16.2. Protest forms are available at the Protest Desk.
- 16.3. Protests shall be delivered to the Protest Desk within 45 minutes after the race committee finish vessel docks. The vessel docking time will be posted on the notice board. Hearings will be held promptly.
- 16.4. The location of the Protest Desk and the Protest Hearings will be announced at the Competitors Meeting along with any additional restrictions or regulations.

17. **SCORING**

- 17.1. For each day of the race a boat's score will be the total of her race scores, with no throw-out.
- 17.2. For the regatta, one score will be excluded for every five races completed (20%), as permitted by RRS 90.3(b).

18. **SAFETY**

- 18.1. All boats are requested to check-in with the race committee before the start of the first race each day by sailing past the signal vessel on starboard tack and hailing their class and sail number and receiving confirmation from the race committee. Boats arriving late should check-in with any race committee vessel.
- 18.2. A boat that retires from the racing area shall notify the race committee as soon as possible.
- 18.3. All boats participating in the One-Design Series shall carry 8 lbs. of anchor and chain and 50' of line, a 3 gallon (or larger) bucket and paddle. Participants are also reminded that the US Coast Guard requires a wearable PFD for all crew and an "efficient sound making device" (generally a whistle or air horn). Boats 16' or longer must also carry a Type IV throwable device.
- 18.4. Boats may be checked at any time for the safety equipment. Any boat found to be missing any required safety equipment will be disqualified from all races that day

19. **CLEAN REGATTA**

Nantucket Race Week is committed to maintaining Nantucket's clean waters and shores, and is certified by Sailors for the Sea as a gold-level Clean Regatta. All NRW participants are encouraged to follow the goals and requirements of the Clean Regattas program.

20. **DISCLAIMER OF LIABILITY**

20.1. Sailing is an activity that has an inherent risk of damage and injury. Competitors in this event are participating entirely at their own risk. See RRS 4, Decision to Race. The race organizers, Nantucket Race Week L.L.C., the Nantucket Yacht Club, Great Harbor Yacht Club, Nantucket Community Sailing, Race Committee, Protest Committee, Technical Committee, volunteers, sponsors, agents, employees, or any other organization or official providing services at the request of any of the foregoing in connection with the events will not be responsible for damage to any boat or other property, or the injury, disease or illness to any person sustained as a result of participation in this event. By participating in this event, each competitor (owners, skippers, crews and support persons) agrees to release the race organizers and all persons and groups listed above from any and all liability associated with such competitor's participation in this event to the fullest extent permitted by law.



SAILING INSTRUCTIONS  
One Design Regatta  
A Part of Nantucket Race Week  
August 14 and 21, 2021

20.2.RRS 3 states: 'The responsibility for a boat's decision to participate in a race or to continue to race is hers alone.' By participating in this event each competitor agrees and acknowledges that sailing is a potentially dangerous activity with inherent risks. These risks include strong winds and rough seas, sudden changes in weather, failure of equipment, boat handling errors, poor seamanship by other boats, loss of balance on an unstable platform and fatigue resulting in increased risk of injury. Inherent in the sport of sailing is the risk of permanent, catastrophic injury or death by drowning, trauma, hypothermia or other causes

21. **FURTHER INFORMATION**

21.1. Massachusetts Boating Regulations

21.2. Nantucket Community Sailing

508-228-6600

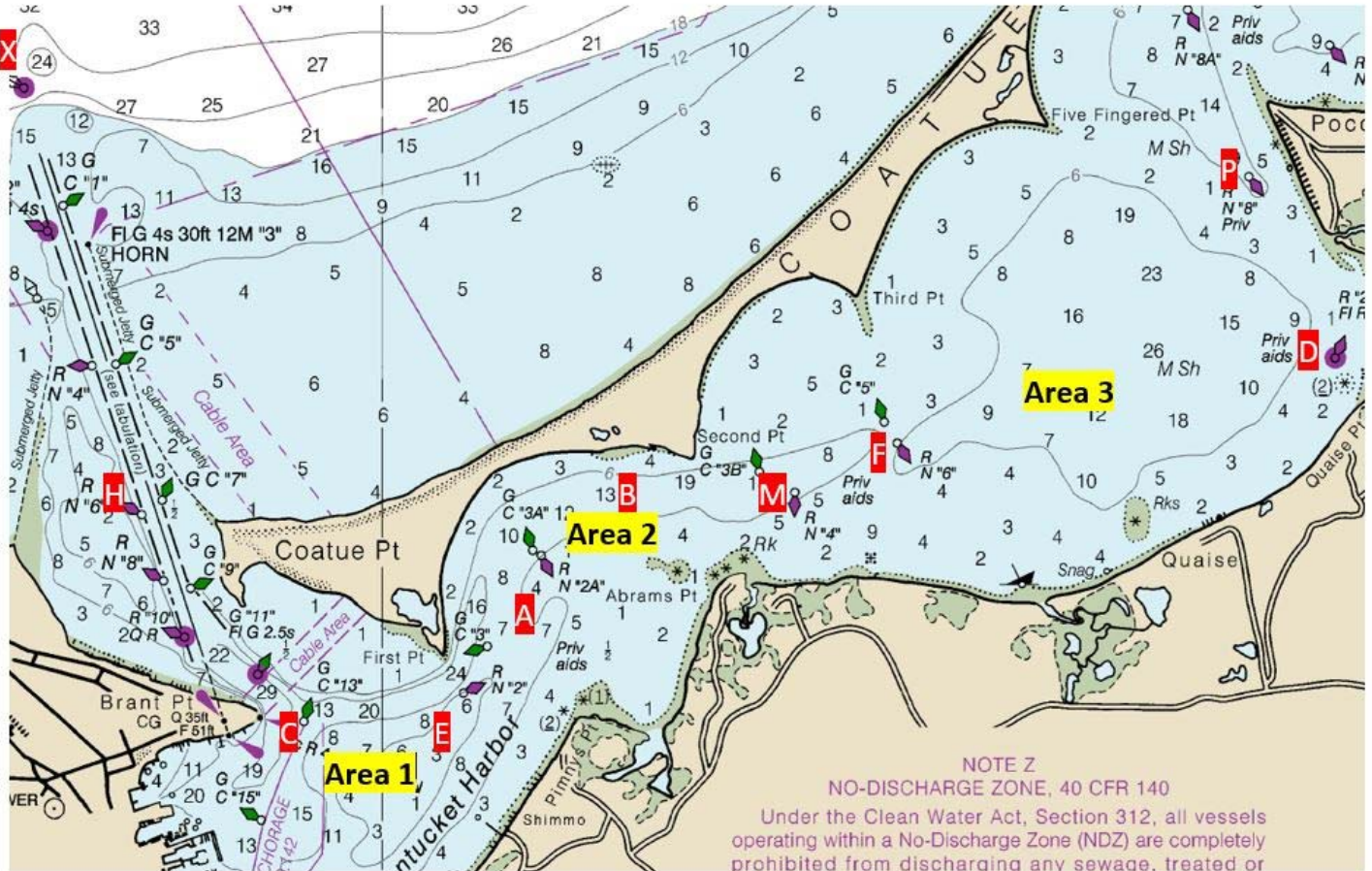
Website [www.nantucketraceweek.org/page/nrw](http://www.nantucketraceweek.org/page/nrw)



SAILING INSTRUCTIONS  
One Design Regatta  
A Part of Nantucket Race Week  
August 14 and 21, 2021

Addendum A

Racing Areas and Permanent Marks



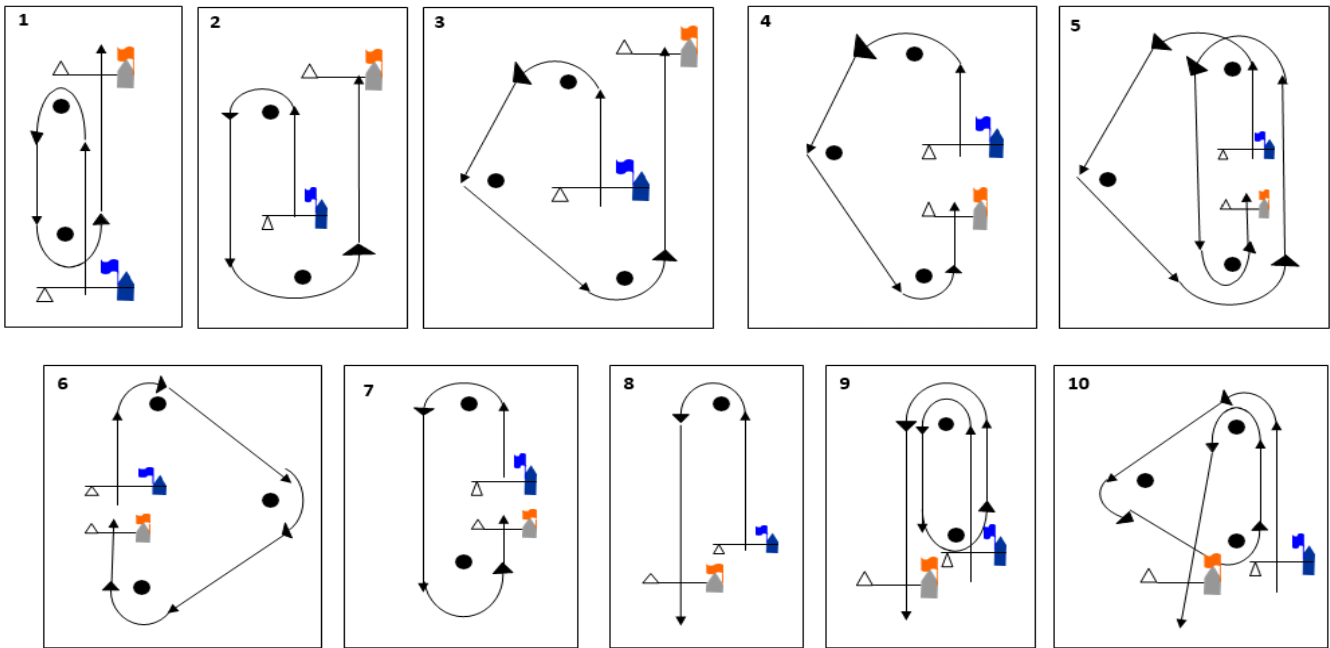


SAILING INSTRUCTIONS  
One Design Regatta  
A Part of Nantucket Race Week  
August 14 and 21, 2021

Addendum B One Design Courses – Race Circle One

Courses will be shown on the course board located near the stern of the NYC Signal Vessel

- 1 The letter "T" following the course number designates *twice around*
  - 2 All marks are to PORT (except course #6) unless designated with an "S"
- Unless starting or finishing, boats crossing the starting line or finishing line will be scored DSQ for that race*







SAILING INSTRUCTIONS  
One Design Regatta  
A Part of Nantucket Race Week  
August 14 and 21, 2021

Addendum C - One Design Courses – Race Circle Two

Courses will be hailed from the signal vessel. Windward-Leeward or Triangle courses may be hailed as Twice-around.

Unless starting or finishing, boats crossing the starting line or finishing line will be scored DSQ for that race

