



Rainbow Parade 2016

Nantucket Race Week

NOTICE OF EVENTS



Draft 3 8/10/2016

1 GUIDELINES

.1: TIMES:

- Parade participants will assemble near the Miss China mooring ball, just off First Point (see **map on back**) by **9:20**.
- The parade will conclude at **10:10**. At this point the Course Marshalls will escort boats from the sailing area and then be relieved of duty.

.2: COMMUNICATION:

- All communication intended for the parading boats will be made **via VHF radio CHANNEL 71**.

.3: INSURANCE:

Each participating boat shall be insured with adequate third-party liability insurance.

.4: VENUE:

The parade will be held near the Brant Point lighthouse, adjacent to the beach off of Hulbert Avenue. **See map for reference.**

.5: COURSE:

The course that will be set for the parade will be between two coach boats (see map).

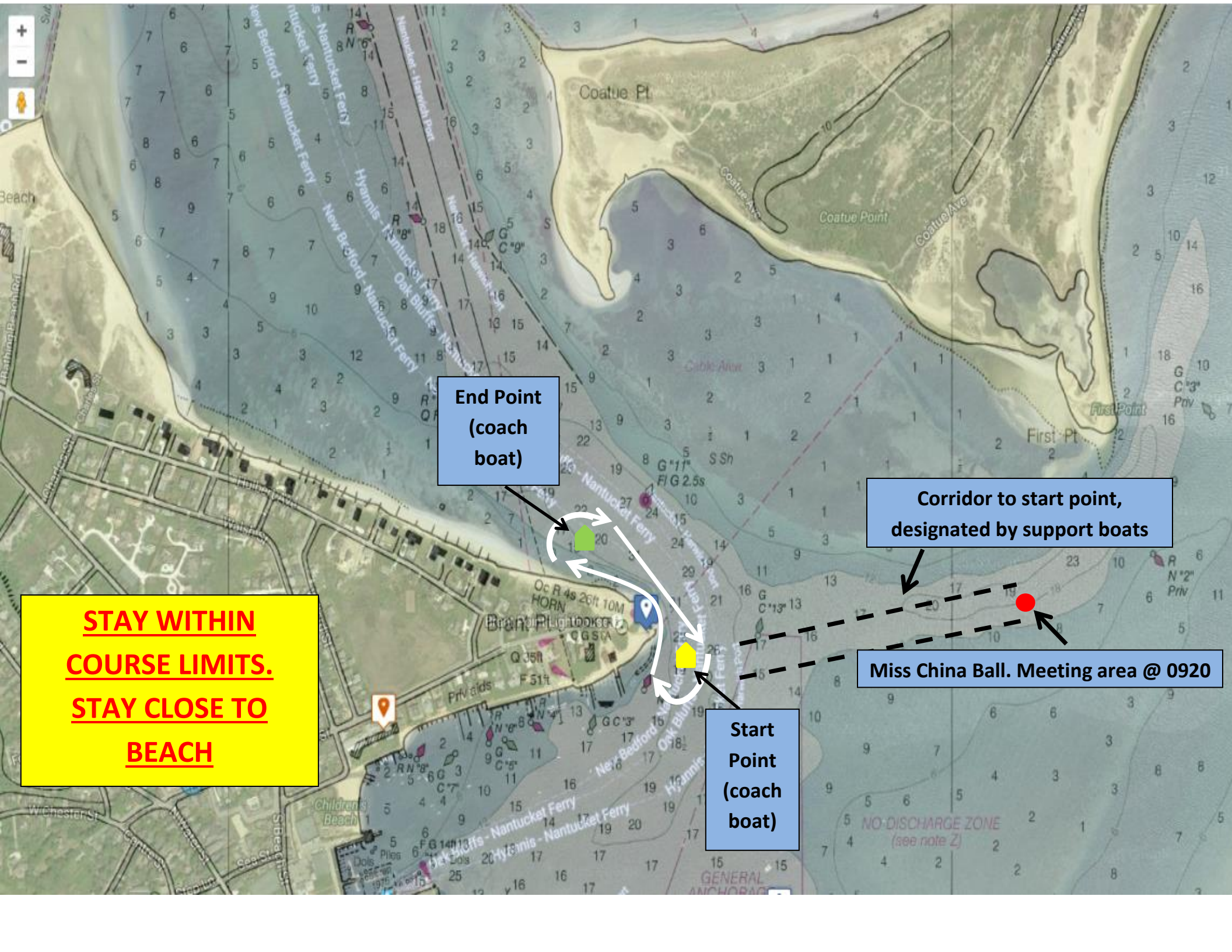
BE SURE TO REMAIN CLOSE TO THE BEACH AND WITHIN THE LIMITS OF THE SET COURSE

2 SCHEDULE OF EVENTS

- **9:00-9:20:** All boats gather near Miss China mooring ball
- **9:20-9:40:** Approach, but do not pass, Can 13.
- **9:40:** Sailing Yacht "Sorcerer" signals & sails past Brant Point
- **9:40:** Parade commences just off Brant Pt lighthouse/Hulbert Ave (see **MAP**)
- **10:10:** Parade ends, Course Marshalls guide parade sailors back to harbor.

3 COURSE MARSHALLS

- Course Marshalls will be flying official **Black Nantucket Race Week Flags**.
- They will be driven by GHYC qualified sailing instructors, wearing blue colored Nantucket Race Week t-shirts.
- They will be working to prevent collisions between parade participants and other boats.
- **IT IS PARAMOUNT THAT SAILORS LISTEN TO INSTRUCTION GIVEN BY COURSE MARSHALS IN ORDER TO ENSURE THE SAFETY OF ALL PARTICIPANTS. FAILURE TO FOLLOW INSTRUCTION MAY LEAD TO THE CANCELLATION OF THE PARADE.**



End Point
(coach
boat)

Corridor to start point,
designated by support boats

**STAY WITHIN
COURSE LIMITS.
STAY CLOSE TO
BEACH**

Miss China Ball. Meeting area @ 0920

Start
Point
(coach
boat)