



# **SkyVisualEditor Ver.22.0**

## **Release Note**

## Table of Contents

Introduction.....	3
<b>1 Release Details.....</b>	<b>4</b>
1.1 SkyVisualEditor LC Updates .....	4
1.1.1 Added a new feature, "Budget and Actual Table" which enables comparison of budget and actual values in time series.....	4
1.1.2 Some standard objects of Salesforce Field Service are available	6
1.1.3 Theme colors can now be set for Flexible data table .....	7
1.2 SkyVisualEditor VF Updates .....	8
1.2.1 Some standard objects of Salesforce Field Service are available	8
1.2.2 Supports switching input keyboards on Tablets & Smartphones	9
1.2.3 Allows adjustment of the transparency of the stamp image of a Signature stamp item.....	11
1.2.4 Freehand input items can be placed on the Panel grid.....	12
1.2.5 URL parameter available on Custom lookup template .....	13
<b>2 Disclaimers.....</b>	<b>14</b>

## Introduction

These release notes will cover the basic information about the new features and existing features enhancements.

The updates may influence your existing system.

Please consider the effect on the existing pages when you deploy your page.

For more details, please refer to the help documents which are scheduled to be released at the time of the update.

### Help documents

SkyVisualEditor Portal : <https://d.terrasky.jp/SkyVisualEditorUserGuideEn>

SkyVisualEditor VF : <https://d.terrasky.jp/SkyVisualEditorVFUserGuideEn>

SkyVisualEditor LC : <https://d.terrasky.jp/SkyVisualEditorLCUserGuideEn>

# 1 Release Details

## 1.1 SkyVisualEditor LC Updates

Here are the updates for SkyVisualEditor LC.

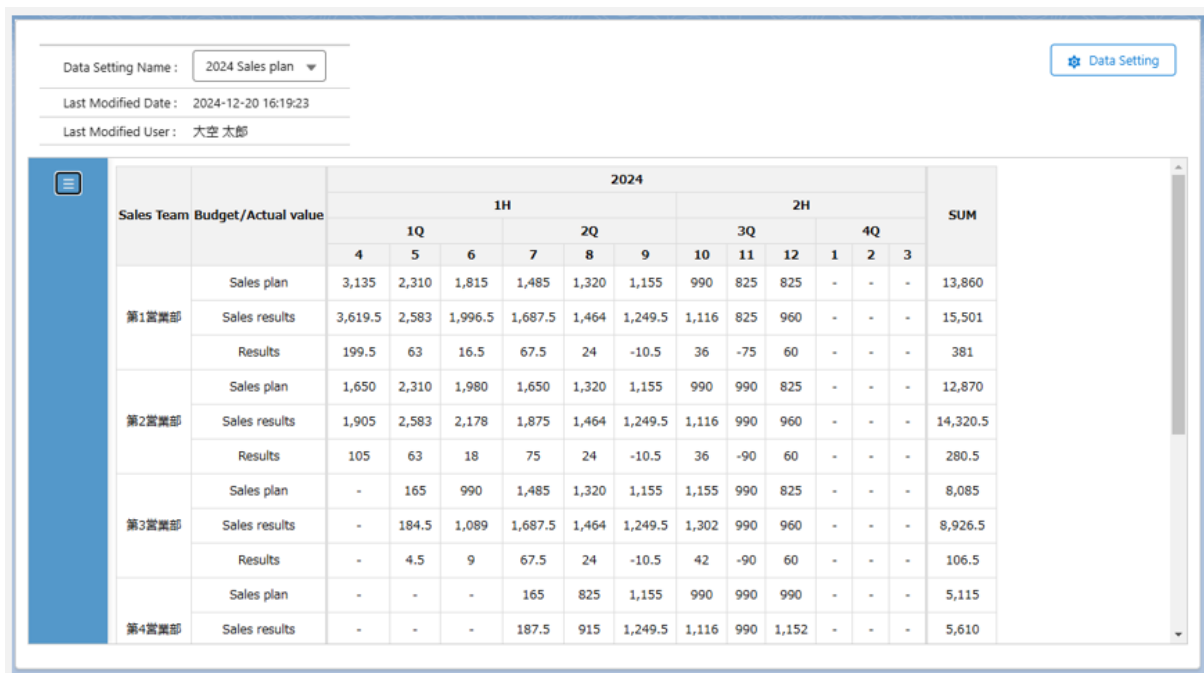
### 1.1.1 Added a new feature, “Budget and Actual Table” which enables comparison of budget and actual values in time series

New features have been added to the Budget and Actual Table.

It is a feature with the following characteristics

- Comparison of budget and actual values in time series (only actual values can be displayed)
- Excel file output with the same table structure as the data being displayed

It can be conveniently used for various tasks that require forecast management, such as “Sales management” and “Project management.”



The screenshot displays the SkyVisualEditor LC interface. At the top, there is a 'Data Setting Name' dropdown set to '2024 Sales plan', a 'Last Modified Date' of '2024-12-20 16:19:23', and a 'Last Modified User' of '大空 太郎'. A 'Data Setting' button is located in the top right corner. The main table is titled '2024' and has columns for 'Sales Team', 'Budget/Actual value', and a grid of quarterly data (1Q, 2Q, 3Q, 4Q) for both 1H and 2H, followed by a 'SUM' column. The table is organized into four sections, one for each sales team (第1営業部, 第2営業部, 第3営業部, 第4営業部). Each section contains three rows: 'Sales plan', 'Sales results', and 'Results'. The 'Sales results' and 'Results' rows contain numerical values, while the 'Sales plan' row contains budget values. The 'Results' row contains values for the first three quarters, with the fourth quarter being blank.

Sales Team	Budget/Actual value	2024												SUM
		1H						2H						
		1Q			2Q			3Q			4Q			
		4	5	6	7	8	9	10	11	12	1	2	3	
第1営業部	Sales plan	3,135	2,310	1,815	1,485	1,320	1,155	990	825	825	-	-	-	13,860
	Sales results	3,619.5	2,583	1,996.5	1,687.5	1,464	1,249.5	1,116	825	960	-	-	-	15,501
	Results	199.5	63	16.5	67.5	24	-10.5	36	-75	60	-	-	-	381
第2営業部	Sales plan	1,650	2,310	1,980	1,650	1,320	1,155	990	990	825	-	-	-	12,870
	Sales results	1,905	2,583	2,178	1,875	1,464	1,249.5	1,116	990	960	-	-	-	14,320.5
	Results	105	63	18	75	24	-10.5	36	-90	60	-	-	-	280.5
第3営業部	Sales plan	-	165	990	1,485	1,320	1,155	1,155	990	825	-	-	-	8,085
	Sales results	-	184.5	1,089	1,687.5	1,464	1,249.5	1,302	990	960	-	-	-	8,926.5
	Results	-	4.5	9	67.5	24	-10.5	42	-90	60	-	-	-	106.5
第4営業部	Sales plan	-	-	-	165	825	1,155	990	990	990	-	-	-	5,115
	Sales results	-	-	-	187.5	915	1,249.5	1,116	990	1,152	-	-	-	5,610

Figure 1.1.1-1 Example of displaying a Budget and Actual Table in Salesforce

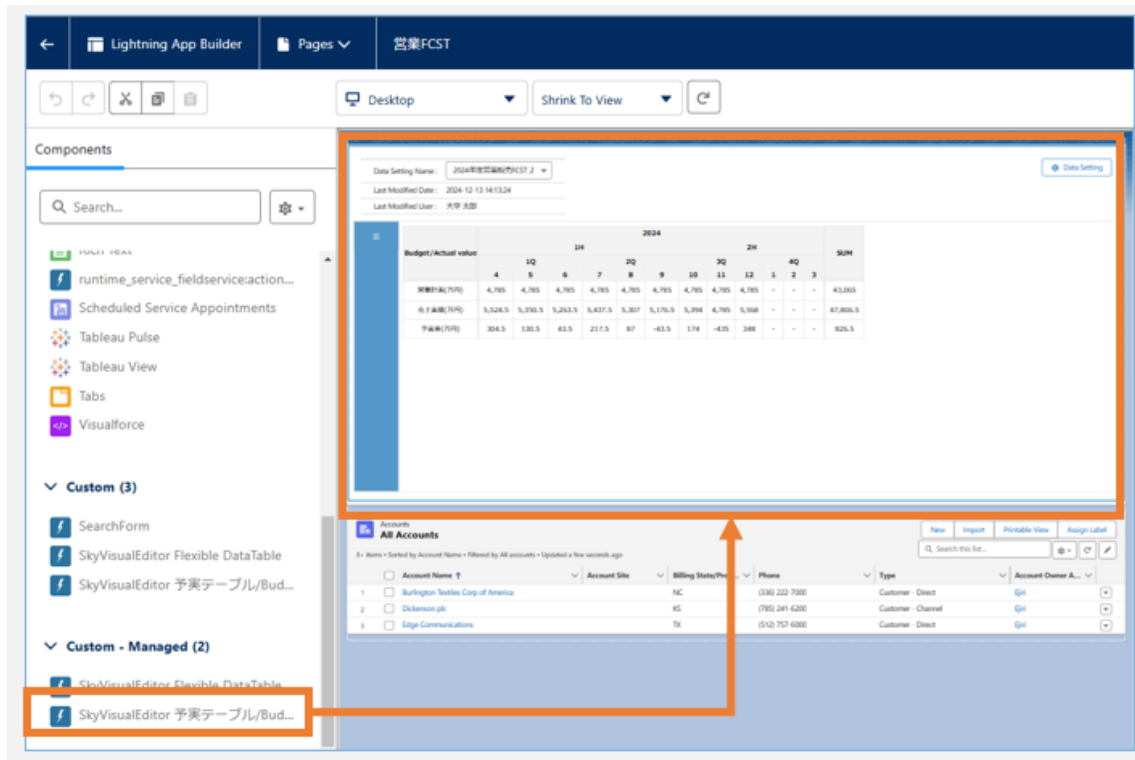


Figure 1.1.1-2 Deployment of Budget and Actual tables on Salesforce Lightning Application Builder

### 1.1.2 Some standard objects of Salesforce Field Service are available

Some standard objects of Salesforce Field Service, which have been requested by many users, are now available.

Supported objects are as follows.

- Service Appointment
- Work Order
- Work Order Line Item

This allows work instructions and work order items to be arranged in a customized layout so that they can be seen at a glance, making the screen more user-friendly at the work site, for example.

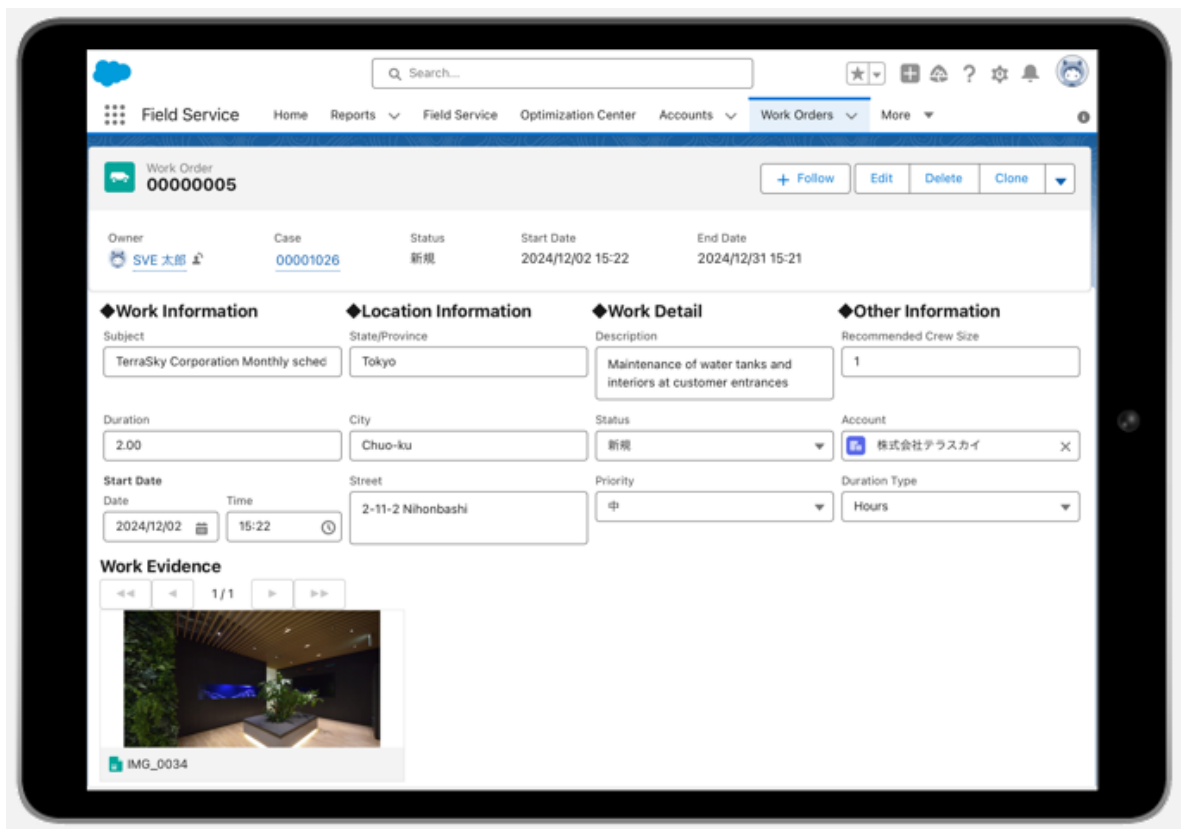


Figure 1.1.2-1 Example of Work order edit screen combined with File preview item on iPad (Safari)

### 1.1.3 Theme colors can now be set for Flexible data table

Theme colors can now be set for Flexible data tables. The header color and text color can be changed by setting the theme color.

The following theme colors can be set from the Lightning Application Builder properties.

- List View Theme color
- Org Branding Theme color
- Specify individual header and text colors

Flexible data tables that are more familiar to your organization are available.

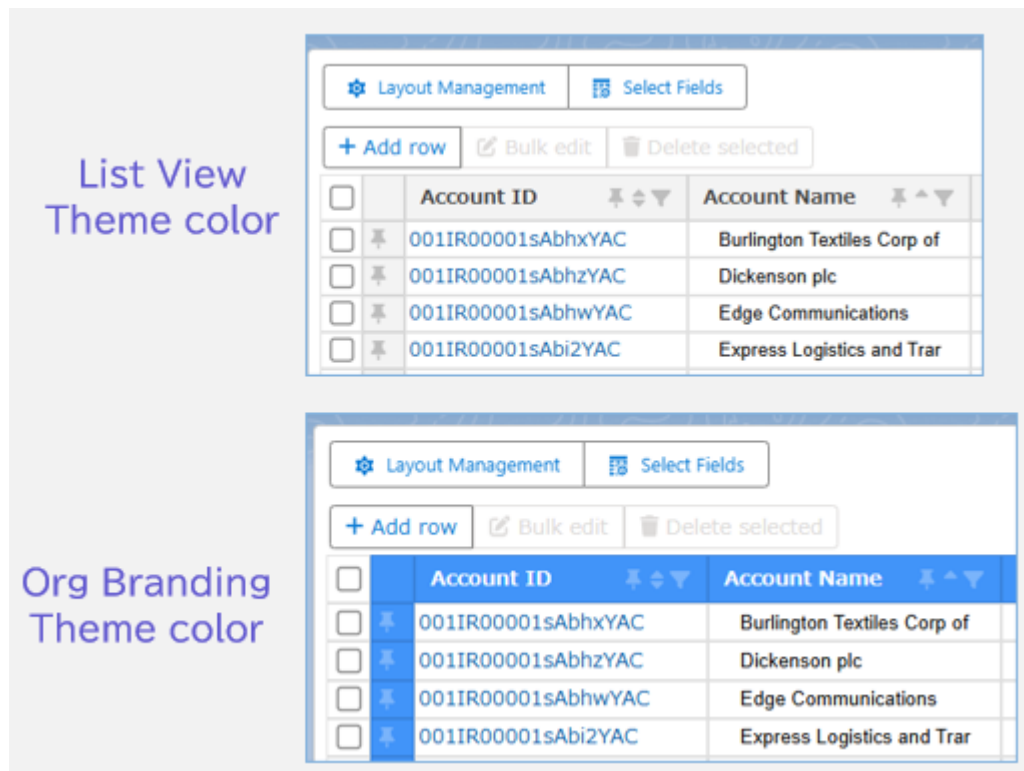


Figure 1.1.3-1 Example of theme color for Flexible data table

## 1.2 SkyVisualEditor VF Updates

Here are the updates for SkyVisualEditor VF.

### 1.2.1 Some standard objects of Salesforce Field Service are available

Similar to the addition of SkyVisualEditor LC functionality, some standard objects of the Salesforce Field Service are now available in SkyVisualEditor VF.

- Service Appointment
- Work Order
- Work Order Line Item

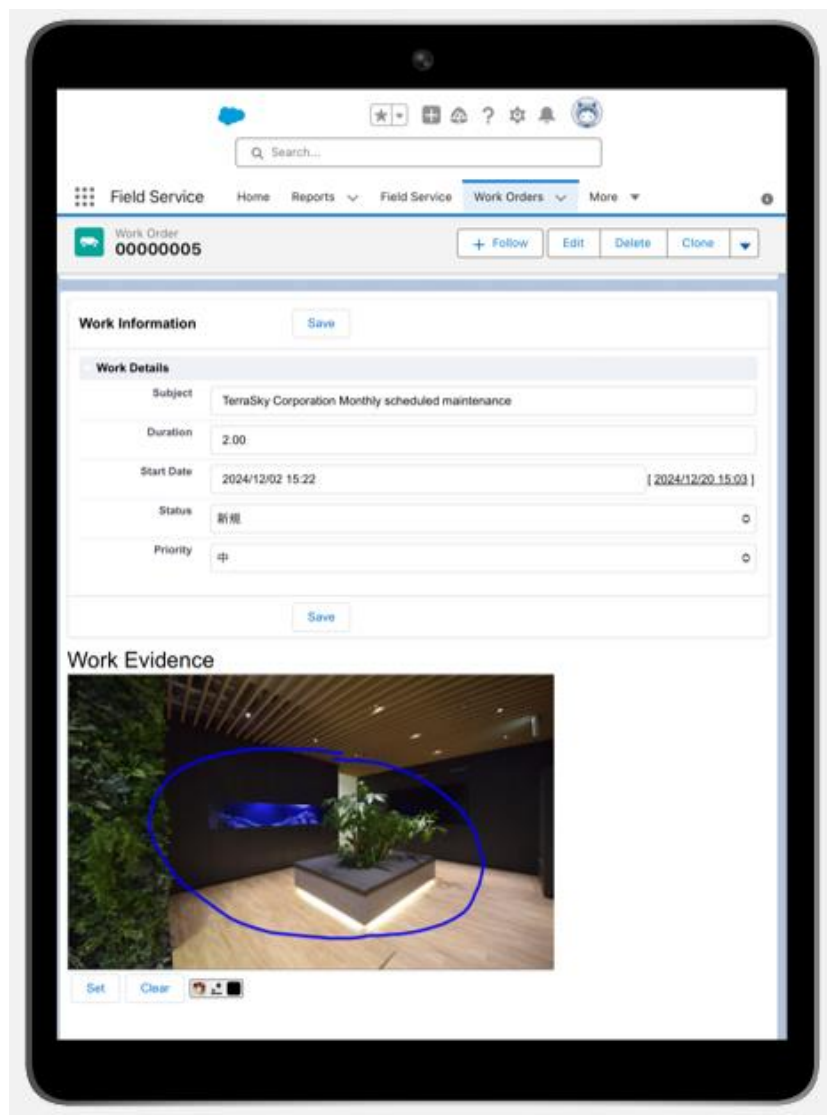


Figure 1.2.1-1 Example of work order editing screen combined with Freehand input items on iPad (Safari)



## 1.2.2 Supports switching input keyboards on Tablets & Smartphones

When entering values into input fields from a Tablet or Smartphone, some Salesforce data types will now automatically switch to the appropriate keyboard type, making it easier to enter items in a mobile environment.

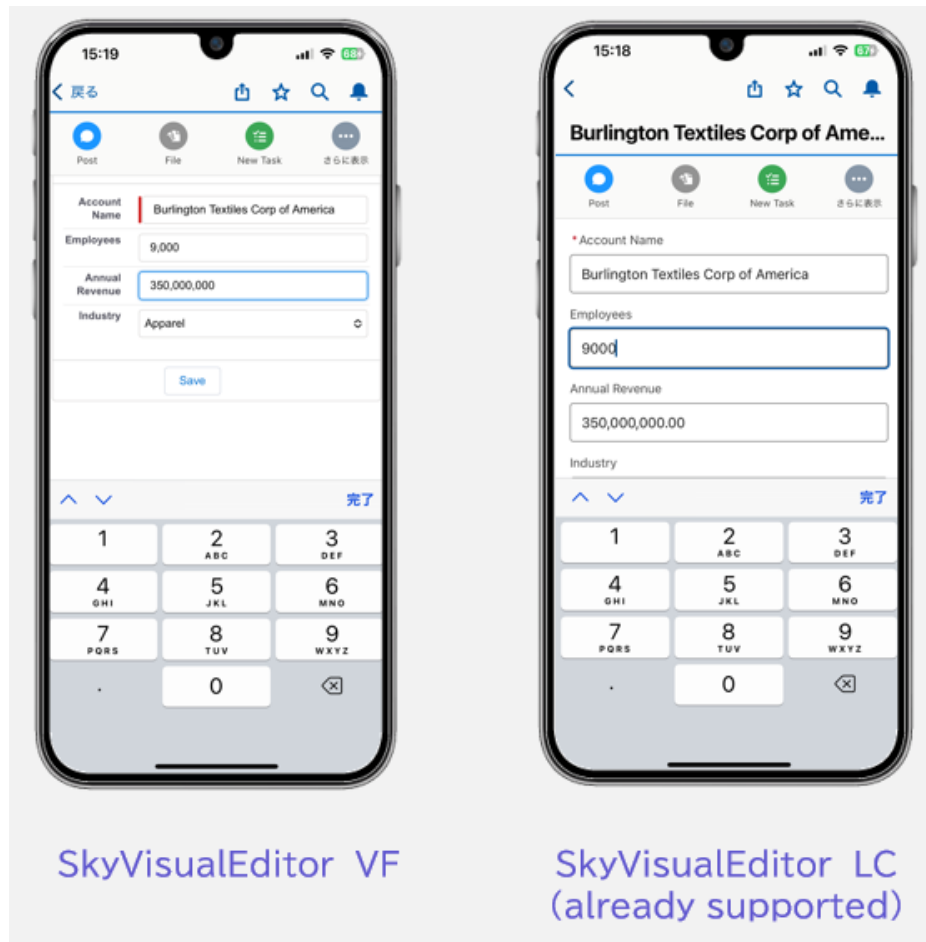


Figure 1.2.2-1 Example of switching input keyboard on iPhone (Salesforce mobile app)

Table 1.2.2-1 Example of switching keyboard type for each input field data type

Input field data type	Smartphone (iPhone)	Tablet (iPad)
URL	 The image shows a standard QWERTY keyboard on a smartphone screen. The keys are white with black lettering. The bottom row includes a globe icon, a '123' key, a 'space' key, a '@' key, and a blue 'go' key.	 The image shows a standard QWERTY keyboard on a tablet screen. The keys are dark grey with white lettering. The bottom row includes a globe icon, a '123' key, a 'space' key, a '@' key, and a blue 'go' key.
Number Percent Currency	 The image shows a numeric keypad on a smartphone screen. The keys are white with black numbers and symbols. The bottom row includes a globe icon, a '123' key, a '0' key, and a blue 'go' key.	 The image shows a numeric keypad on a tablet screen. The keys are dark grey with white numbers and symbols. The bottom row includes a globe icon, a '123' key, a '0' key, and a blue 'go' key.
Mail	 The image shows a standard QWERTY keyboard on a smartphone screen. The keys are white with black lettering. The bottom row includes a globe icon, a '123' key, a 'space' key, an '@' key, and a blue 'go' key.	 The image shows a standard QWERTY keyboard on a tablet screen. The keys are dark grey with white lettering. The bottom row includes a globe icon, a '123' key, a 'space' key, an '@' key, and a blue 'go' key.

### 1.2.3 Allows adjustment of the transparency of the stamp image of a Signature stamp item

The transparency of the Signature stamp item impression can now be adjusted. This allows you to create a form screen with a clearer stamp impression.



Figure 1.2.3-1 Example of adjusting the transparency of the Signature stamp item impression in Salesforce

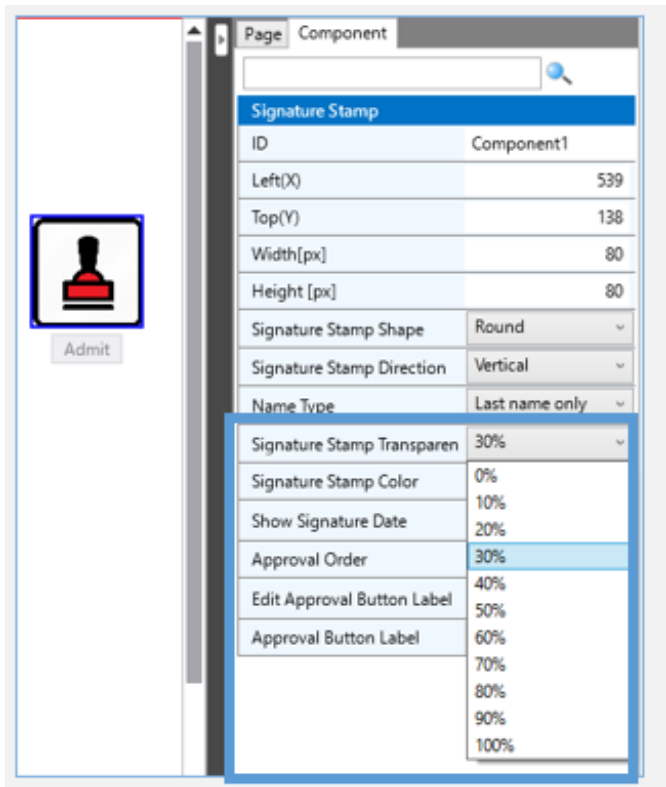


Figure 1.2.3-2 Setting the transparency of the Signature stamp item image in Studio

### 1.2.4 Freehand input items can be placed on the Panel grid

---

Freehand input items can now be placed on the Panel grid. This is useful when placing Freehand input items in Free layouts, aligning them horizontally with other parts, etc.

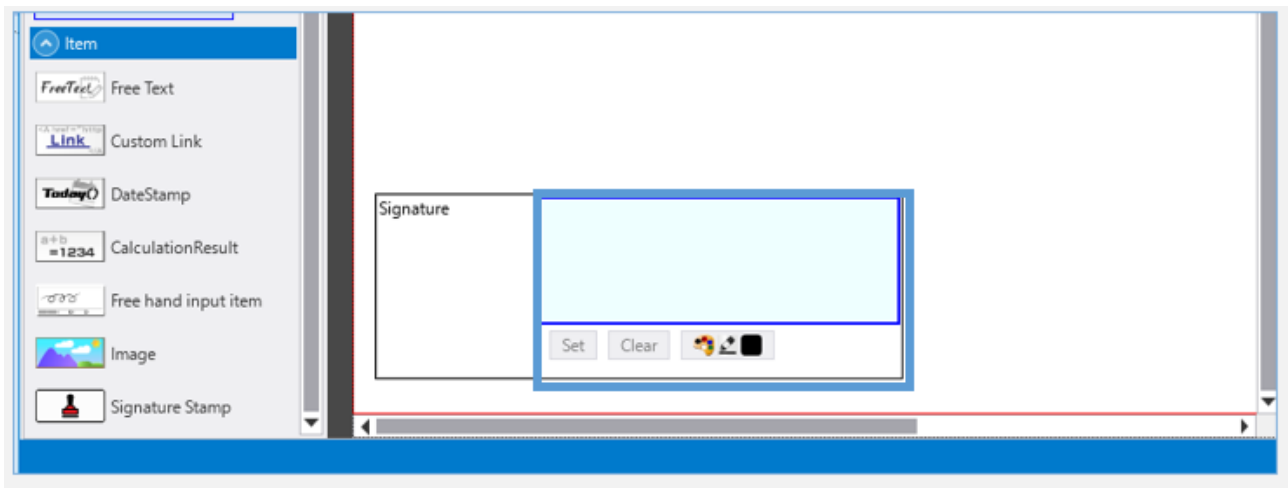


Figure 1.2.4-1 Placement of Freehand input items on the Panel grid in Studio

### 1.2.5 URL parameter available on Custom lookup template

URL parameter functionality is now available on the Custom lookup template. This allows you to set initial values for record search criteria to achieve smooth searches.

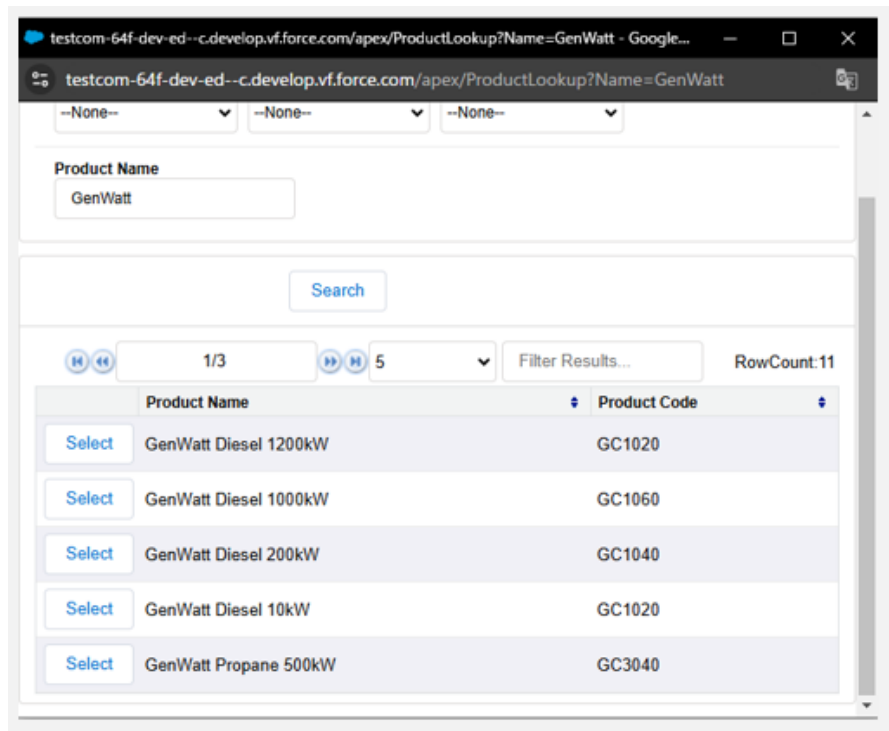


Figure 1.2.5-1 Custom lookup form automatically searched when displayed by URL parameter

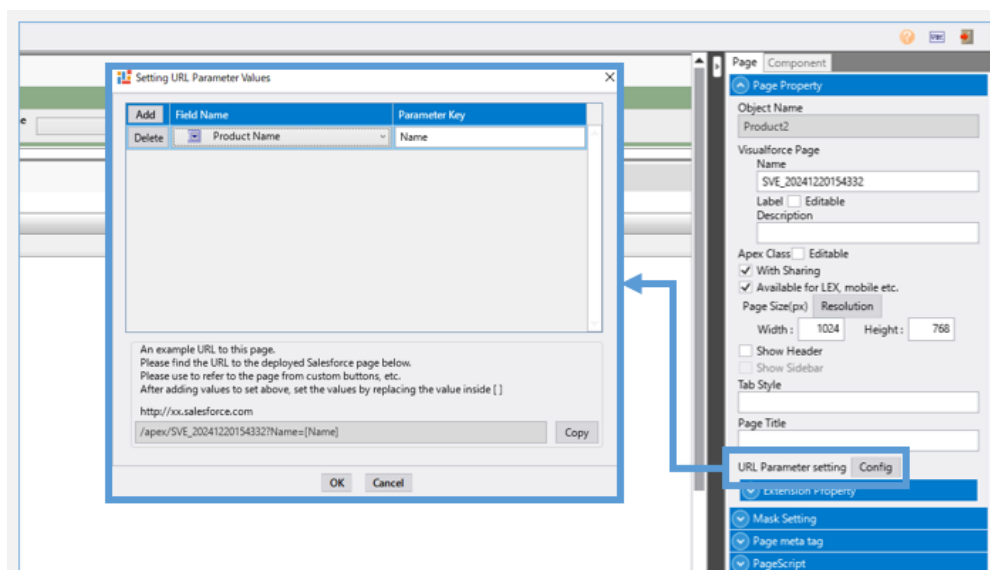


Figure 1.2.5-2 URL parameter settings for Custom lookup template in Studio

## 2 Disclaimers

- These release notes are current as of December 15, 2024. Salesforce and this product are updated regularly, so in the event of differences between what is stated and current behavior, the current status will prevail.
- The contents of this release note are subject to change without notice in the future.
- While every effort has been made to ensure the accuracy of the contents of this release note, please contact us if you notice any unclear points, errors or omissions.



## Product Information

Product URL

<https://www.terrasky.com/skyvisualeditor>

Email

[support@terrasky.com](mailto:support@terrasky.com)

Help documents

SkyVisualEditor Portal : <https://d.terrasky.jp/SkyVisualEditorUserGuideEn>

SkyVisualEditor VF : <https://d.terrasky.jp/SkyVisualEditorVFUserGuideEn>

SkyVisualEditor LC : <https://d.terrasky.jp/SkyVisualEditorLCUserGuideEn>

## SkyVisualEditor Ver.22.0 ReleaseNote

Date of Publication: December 15, 2024 (1st ed.)