



**SkyVisualEditor V20.0
Release Note**

Table of Contents

Introduction.....	3
1 V20.0 Updates.....	4
1.1 SkyVisualEditor LC Updates	4
1.1.1 FlexibleDataTable allow editing of records	4
1.1.2 FlexibleDataTable allows initial state layout.....	5
1.1.3 FlexibleDataTable allow activation of only necessary items and functions.....	6
1.1.4 Layout can now be shown/hidden	7
1.2 SkyVisualEditor VF Updates	8
1.2.1 Added eraser tool to the Free hand input item.....	8
2 Information for Customers	9
2.1 Help Document Renewal Opening Announcement.....	9
3 Disclaimers.....	9

Introduction

These release notes will cover the basic information about the new features and existing features enhancements.

The updates may influence your existing system.

Please consider the effect on the existing pages when you deploy your page.

For more details, please refer to the help documents which are scheduled to be released at the time of the update.

Help documents

SkyVisualEditor Portal : <https://d.terrasky.jp/SkyVisualEditorUserGuideEn>

SkyVisualEditor VF : <https://d.terrasky.jp/SkyVisualEditorVFUserGuideEn>

SkyVisualEditor LC : <https://d.terrasky.jp/SkyVisualEditorLCUserGuideEn>

1 V20.0 Updates

1.1 SkyVisualEditor LC Updates

Here are the updates for SkyVisualEditor LC.

1.1.1 FlexibleDataTable allow editing of records

Inline editing has been added to the FlexibleDataTable, enabling records to be updated on the component.

The features of the inline editing function are as follows.

- The "edited fields," "fields where errors occurred when saving," and "fields that were modified after errors occurred" are displayed with background color and icons for easy visual understanding.
- Errors that occur when saving records are clearly listed at the top of the component.
- Support for Salesforce mobile apps and iPad Safari
- Maximum of 500 records can be updated with a single inline edit

Visual representation of the state after inline editing

List of save errors at the top

FIELD NAME	VALUE	ERROR DETAILS
Email	edge.com	Email: invalid email address: edge.com

Layout Management Select Fields Save records

Account ID	Departm...	Email	Home Phone
Contact ID	Birthdate		
Edge Communications 0035h00001Jf8wrAAB	testtestProcureme 1971/11/23	edge.com	123
Edge Communications 0035h00001Jf8wsAAB	Finance 1950/08/21	sean@edge.com	

Figure 1.1.1-1 FlexibleDataTable Inline Editing Feature

1.1.2 FlexibleDataTable allows initial state layout

The default layout used for the initial display of the FlexibleDataTable can now be configured.

This prevents the FlexibleDataTable from being reset to its initial layout each time a screen or component is updated.

Set default layout from Layout Management

The screenshot shows a 'Layout Management' interface. On the left, there are tabs for 'Load Layout', 'Save Layout', 'Delete Layout', and 'Default Layout'. The 'Default Layout' tab is active, and a dropdown menu is open, showing 'default' as the selected option. An 'Update' button is located below the dropdown. On the right, there is a data table with columns for 'Account ID', 'Contact ID', 'Departm...', 'Birthdate', and 'Email'. The table contains several rows of data, including 'Edge Communications' and 'ton Textiles Corp of America'.

Account ID	Contact ID	Departm...	Birthdate	Email
0035h00001Jf8wrAAB	Edge Communications	testtestProcureme	1971/11/23	testa@edge.com
0035h00001Jf8wsAAB	Edge Communications	Finance	1950/08/21	sean@edge.com
0035h00001Jf8wtAAB	ton Textiles Corp of America		年 / 月 / 日	jrogers@burlington.com

Figure 1.1.2-1 Default layout settings by each users

1.1.3 FlexibleDataTable allow activation of only necessary items and functions

Detailed function settings, such as specifying available items in the flexible data table and turning each function on and off, are now available.

There are two types of settings: "Basic Settings" that apply to all users in common, and "User Settings" that give priority only to specific users, allowing for customization such as "CSV export is not available in Basic Settings, but is available only to specific users.

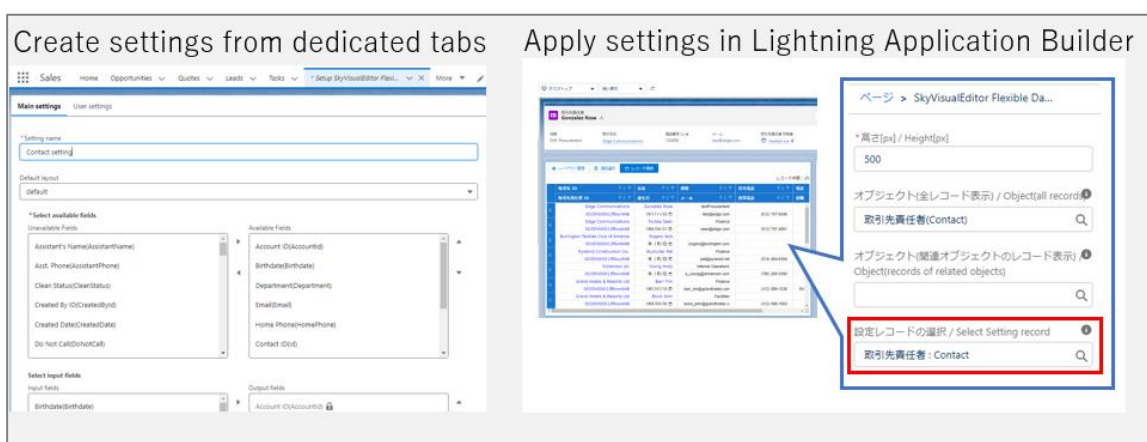


Figure 1.1.3-1 Setting flow

Table 1.1.3-1 List of functions that can be controlled by "Basic Settings" and "User Settings"

Controllable FlexibleDataTable function	Basic Settings	User Settings
Default Layout Settings	○	×
Output Fields Settings	○	×
Input Fields Settings	○	×
CSV Export ON/OFF	○	○
Excel Export ON/OFF	○	○
Inline Editing ON/OFF	○	○
Layout Management ON/OFF	○	○
Select Fields ON/OFF	○	○

Legend: Configurable ○

Configuration not available ×

1.1.4 Layout can now be shown/hidden

A new unit "Custom Toggle Button" has been added to realize switching the display of layouts placed on Studio.

Only layouts with the necessary items and functions can be separated according to the business use of the target component.

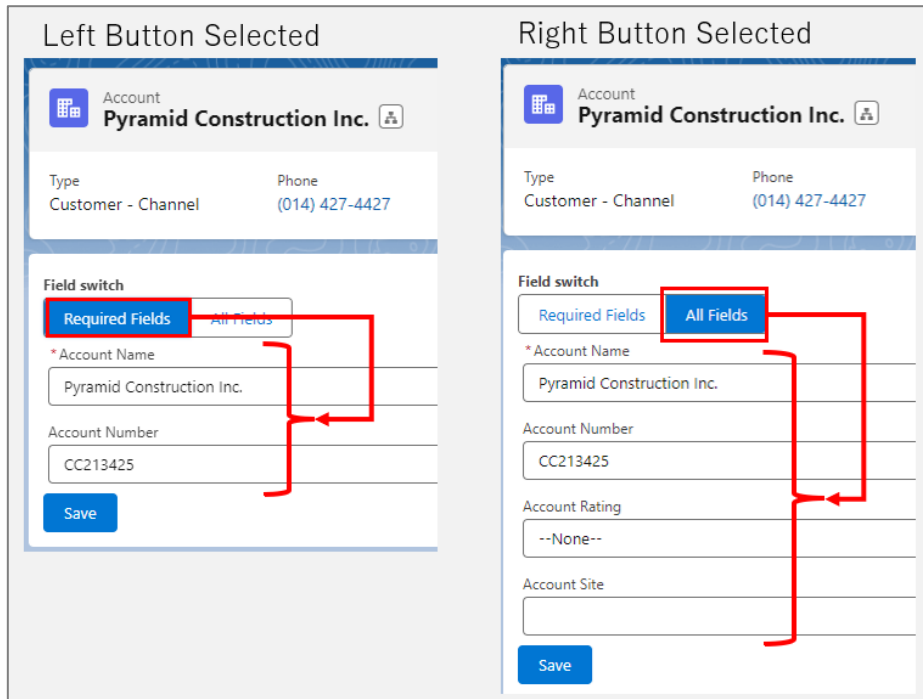


Figure 1.1.4-1 Example of Custom toggle button to switch the display of layouts on Salesforce

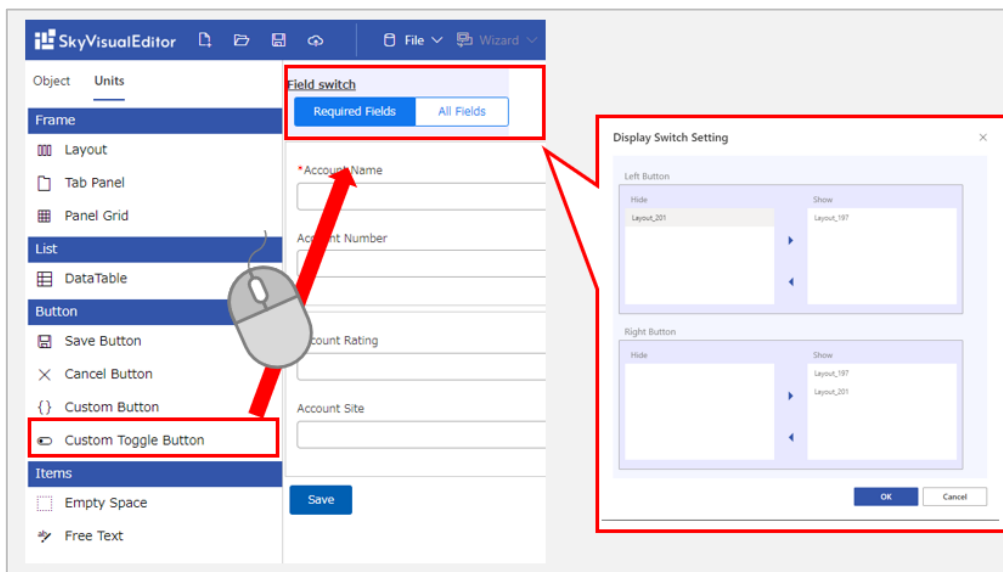


Figure 1.1.4-2 Custom toggle button placement and configuration

1.2 SkyVisualEditor VF Updates

Here are the updates for SkyVisualEditor VF.

1.2.1 Added eraser tool to the Free hand input item

An eraser tool has been added to the Free hand input item.

When an incorrect line is drawn, the eraser tool can now be used to delete only the incorrect part of the line, whereas previously it was necessary to delete all handwritten lines using the "Clear" button.

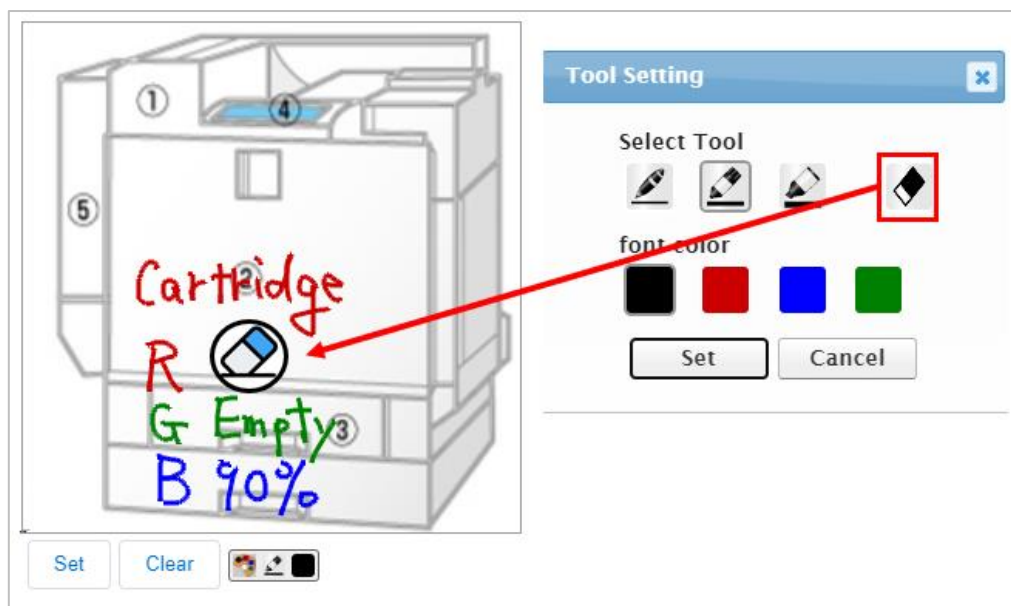


Figure 1.2.1-1 Partial deletion with the eraser tool

2 Information for Customers

2.1 Help Document Renewal Opening Announcement

We would like to inform you that we have renewed and reopened the help document site of SkyVisualEditor in order to enhance security.

Please note that the help documentation site at the doc.terrasky.com domain (hereinafter referred to as "old site") that you have been using until now will be closed.

■ Opening of the new site and closure of the old site

The new site is now open to the public. The new site is now available from the following link.

SkyVisualEditor Portal : <https://d.terrasky.jp/SkyVisualEditorUserGuideEn>

SkyVisualEditor VF : <https://d.terrasky.jp/SkyVisualEditorVFUserGuideEn>

SkyVisualEditor LC : <https://d.terrasky.jp/SkyVisualEditorLCUserGuideEn>

After the closure of the old site, when you access the old site from the links that we have provided in the past, you will be automatically redirected to the top page of the new site,

The URL will be changed, but you will be redirected to the top page of the new site.

Although the URL will be changed, the pages of the old site will still be available on the new site.

3 Disclaimers

- These release notes are current as of December 17, 2023. Salesforce and this product are updated regularly, so in the event of differences between what is stated and current behavior, the current status will prevail.
- The contents of this release note are subject to change without notice in the future.
- While every effort has been made to ensure the accuracy of the contents of this release note, please contact us if you notice any unclear points, errors or omissions.



Product Information

Product URL

<https://www.terrasky.com/skyvisualeditor>

Email

support@terrasky.com

Help documents

SkyVisualEditor Portal : <https://d.terrasky.jp/SkyVisualEditorUserGuideEn>

SkyVisualEditor VF : <https://d.terrasky.jp/SkyVisualEditorVFUserGuideEn>

SkyVisualEditor LC : <https://d.terrasky.jp/SkyVisualEditorLCUserGuideEn>

SkyVisualEditor V20.0 ReleaseNote

Date of Publication: December 17, 2023 (1st ed.)