

# LU7-USB

Signal Tower



LED

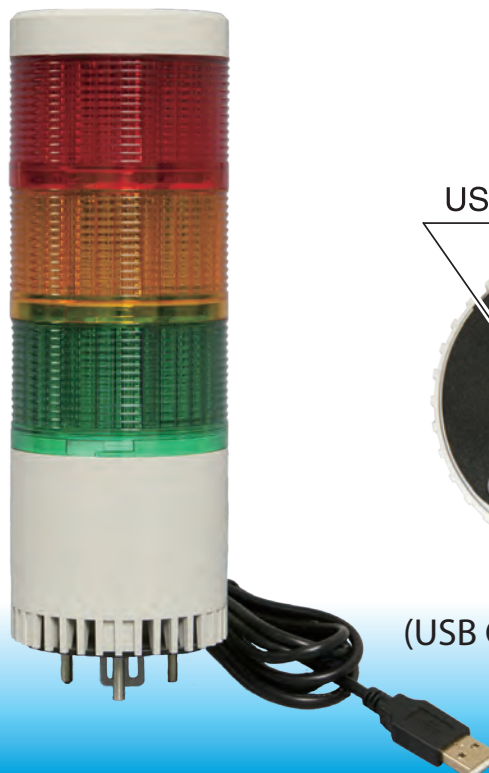


80dB at 1m

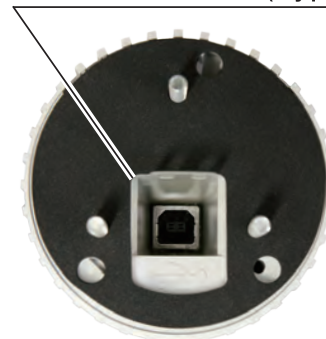
IP65

Φ70

USB



USB connector (Type B)



[Bottom View]  
(USB Cable Not Included)

生産終了  
Production end



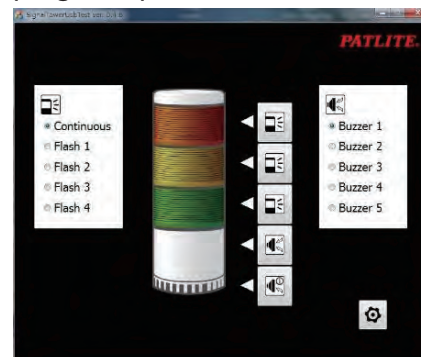
## USB powered Base Module with Integrated Alarms

### FEATURES

- USB Bus Power - no power supply needed
- DLL Operable
- Supports a maximum of five tiers where three tiers can be lighted simultaneously
- Complies with CE/RoHS/FCC/CK Standards
- IP65 protection rating
- Adjustable alarm frequency
- Two levels of adjustable alarm sounds
- Sound pressure at a maximum of 80dB
- Four kinds of flashing patterns
- 13 variable alarm frequencies and five alarm sound patterns
- Vinyl strip to secure USB cable included (Cable not included)
- Supports Windows 7 and Windows 8 Operating Software

### Free Downloadable Software

The Controllable Program is downloadable from the PATLITE website (<http://global.patlite.com/>)



### How to Order

#### Short Base Unit

**LU7 - 02S - USB**

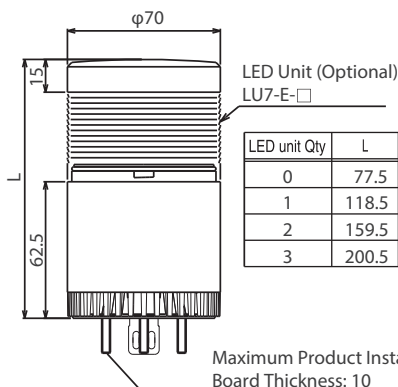
Model

Rated Voltage  
02: DC 24V

Base Color

Blank: Ivory White  
K : Black

### Dimensions (Unit: mm)



LED Unit (Optional)  
LU7-E-□

Maximum Product Installation  
Board Thickness: 10

LED Module

**LU7-E-R**

Model

Color

R: Red  
Y: Amber  
G: Green  
B: Blue  
C: White/Clear

Unit

E : LED Unit

### Application Example

#### Printing Machines

