

# B-LOC Shrink Discs Engineering Data

## DESIGN FEATURES

External locking devices for keyless frictional shaft/hub connections on shafts from 5/8" to 40" diameter, B-LOC Shrink Discs...

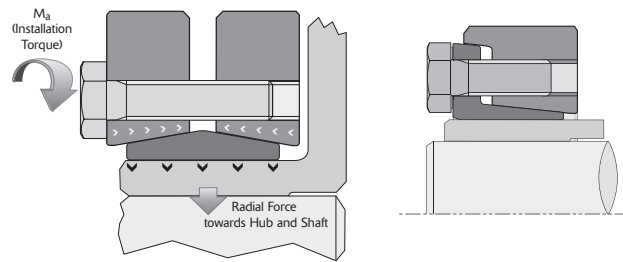
- Provide a high capacity interference fit with all the positive features of conventional interference fits, but without their assembly and disassembly problems.
- Offer extremely concentric and well-balanced connections, ideal for high-speed applications.
- Permit simple axial positioning and angular timing.
- Are available in standard, light, and heavy-duty series to suit any application.

## WORKING PRINCIPLE

B-LOC Shrink Discs provide a high-ratio conversion of screw clamp loads into radial contact pressures when the tapered collars are pulled together by tightening of the integrated high-strength locking screws. These radial contact pressures in turn accomplish the following:

1. Contract the inner ring and hub to close the clearance between shaft and hub bore.
2. Generate a defined shaft/hub contact pressure for a high capacity mechanical interference fit.

This frictional bond transmits torque, bending and/or thrust loads directly from the hub to the shaft; the shrink disc itself does not carry any torque or thrust load.



## TORQUE

$M_t$  = rated torque capacity of one B-LOC Shrink Disc with all screws tightened to specified torque  $M_a$  as listed in specifications, based on a coefficient of friction  $\mu = 0.15$  and specified tolerances and clearances. Torque capacities for Half Shrink Discs =  $\frac{M_t}{2}$

- Torque capacities for connections using shaft diameters between the minimum and maximum sizes listed can be approximated through interpolation.
- Transmissible torque decreases if tolerances and/or clearances are larger than specified; or if hollow shafts with bores exceeding approximately 35% of shaft diameter are used.

## THRUST

$T_h$  = transmissible thrust, determined by using the following equation:

$$T_h = \frac{2 \times M_t}{d}$$

where:  $d$  = shaft diameter  
 $M_t$  = rated torque capacity

## TORQUE AND THRUST COMBINED

Simultaneous transmission of torque and thrust requires calculating a resultant torque:

$$M_{t_{res}} = \sqrt{T^2 + \left(\frac{F \times d}{2}\right)^2}$$

where:  $T$  = peak drive torque  
 $F$  = peak thrust load  
 $d$  = shaft diameter

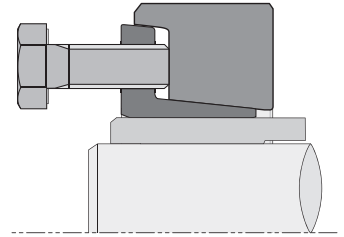
Select a unit where  $M_t \geq M_{t_{res}}$

## BENDING MOMENTS

Shrink discs will generally transmit a continuous bending moment equal to 25% of rated torque capacity  $M_t$ .

## RELEASABILITY

Since the tapers of a B-LOC Shrink Disc are self-releasing and stresses from radial contractions of the hub are well within elastic limits, loosening the locking screws results in hub expansion back to its original dimensions, thereby restoring fit clearance for simple disassembly. The SD40 is manufactured with self-releasing tapers, however, it is possible the outer ring may need disengaging from the inner ring. This can be easily done by loosening the bolts in sequence, transferring the appropriate number of bolts over to the threaded back-off holes in the face of the shrink disc and progressively tightening these bolts until the shrink disc becomes loose. The hub and shaft will return to their original fit clearances.



## MATERIAL

Shrink disc inner rings are manufactured from high-carbon steel. Outer rings are made from forged and heat treated alloy steel.

## LUBRICANTS

Shrink discs are supplied with Molybdenum Disulphide based lubricant applied to the tapers and to the locking screw threads and head contact areas.

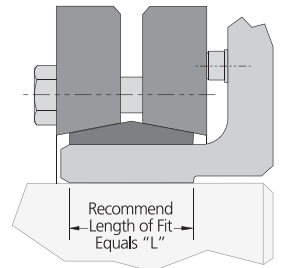
## SHAFT AND HUB MATERIAL

Listed specifications assume shaft and hub material with a yield point of at least 45 ksi (310 N/mm<sup>2</sup>). Cast iron hubs are well suited for compressive stresses exerted by B-LOC Shrink Discs. However, a lower torsional hub strength generally requires the selection of a shrink disc at least one size larger than listed if full torque (i.e., that applicable to a steel hub) is to be transmitted.

## LENGTH OF FIT

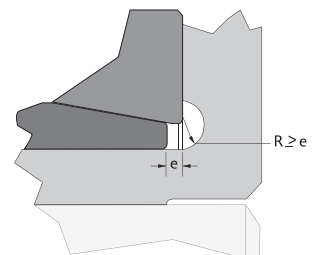
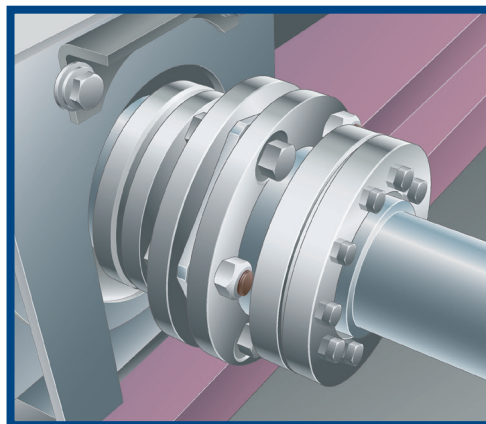
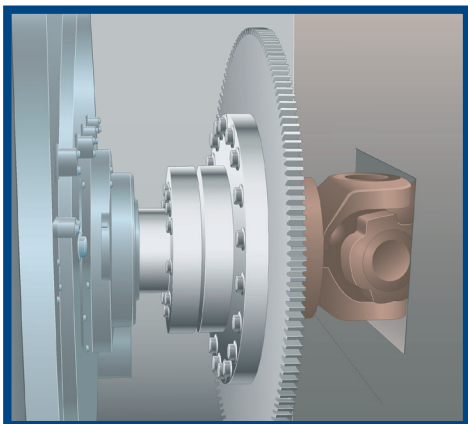
The most recent research on length of fit for a shrink disc connection\* indicates that the hub bore-to-shaft interface should be relieved using a non-toleranced clearance except for that portion directly under the shrink disc inner ring, for a fit length equal to "L" for a standard shrink disc (see illustration at right). This approach eliminates fretting corrosion between shaft and hub which can make the separation of components difficult.

\* (see Casper, Thomas: Reibkorrosionsverhalten von Spänelementverbindungen - Aachen: Mainz, 1999)



## LOCATING AGAINST HUB FACE

In applications subjected to reversing bending moments, we recommend the configuration at right which requires a hub undercut where  $R \geq e$  for smooth transition.

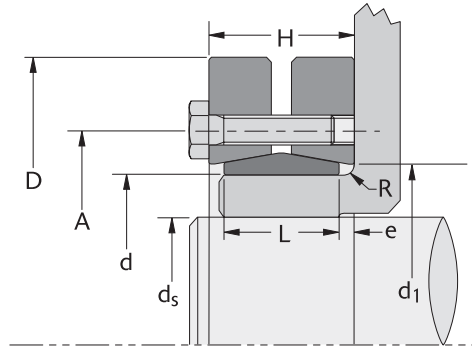


# B-LOC Shrink Discs

B-LOC  
Shrink Disc  
**SD<sup>10</sup>**  
Inch



Metric hex head locking screws  
DIN 931 grade 10.9  
(See  $M_a$  for install torque).



See Table 1 for maximum diametrical clearance between shaft and hub bore.

## SD10 — Standard Duty

Part Number	Size	SD bore (Hub OD)		Shaft Diameter Range		Locking Screws		$M_a$ Install Torque (ft lb)	$M_t$ Max. Transmitted Torque		A (inch)	D (inch)	L (inch)	H (inch)	e (inch)	$d_1$ (inch)	R (inch)	Ship wt (lb)
		d (inch)	T <sub>Ld</sub> (inch)	ds-MIN (inch)	ds-MAX (inch)	Qty	Size		ds-MIN (ft lb)	ds-MAX (ft lb)								
		B0241	24-10	0.945	+0/-0.002	0.625	0.774		6	M5 x 16								
B0301	30-10	1.181	+0/-0.002	0.750	0.967	7	M5 x 18	3.6	177	407	1.732	2.36	0.629	0.79	0.081	1.259	1/16	0.7
B0361	36-10	1.417	+0/-0.002	0.875	1.161	5	M6 x 20	8.7	315	666	2.047	2.83	0.700	0.87	0.085	1.496	1/16	0.9
B0441	44-10	1.732	+0/-0.002	1.125	1.419	7	M6 x 20	8.7	683	1198	2.402	3.15	0.787	0.94	0.077	1.850	1/16	1.4
B0501	50-10	1.969	+0/-0.002	1.375	1.612	8	M6 x 22	8.7	964	1565	2.756	3.54	0.866	1.02	0.077	2.086	1/16	1.8
B0551	55-10	2.165	+0/-0.002	1.500	1.773	8	M6 x 25	8.7	1014	1707	2.953	3.94	0.905	1.14	0.118	2.283	3/32	2.4
B0621	62-10	2.441	+0/-0.002	1.750	1.999	10	M6 x 25	8.7	1718	2375	3.386	4.33	0.905	1.14	0.118	2.598	3/32	2.9
B0681	68-10	2.677	+0/-0.002	1.875	2.193	10	M6 x 25	8.7	1760	2606	3.386	4.53	0.905	1.14	0.118	2.834	3/32	3
B0751	75-10	2.953	+0/-0.002	2.125	2.418	7	M8 x 25	22	2792	4057	3.937	5.43	0.984	1.22	0.118	3.110	1/8	3.8
B0801	80-10	3.150	+0/-0.002	2.375	2.580	7	M8 x 25	22	3416	4331	3.937	5.71	0.984	1.22	0.118	3.307	1/8	4.2
B0901	90-10	3.543	+0/-0.004	2.500	2.902	10	M8 x 30	22	4751	7139	4.488	6.10	1.181	1.49	0.155	3.700	1/8	7
H0951	95-10	3.740	+0/-0.004	2.750	3.063	12	M8 x 30	22	6832	9108	4.882	6.69	1.338	1.69	0.176	4.094	1/8	10
B1001	100-10	3.937	+0/-0.004	2.875	3.224	12	M8 x 35	22	7059	9586	4.882	6.69	1.338	1.69	0.176	4.094	1/8	10
B1101	110-10	4.331	+0/-0.004	3.125	3.547	9	M10 x 40	44	9013	12602	5.354	7.28	1.535	1.93	0.198	4.488	1/8	13
B1251	125-10	4.921	+0/-0.004	3.500	4.031	12	M10 x 40	44	13710	19540	6.299	8.46	1.653	2.04	0.194	5.275	1/8	18
B1401	140-10	5.512	+0/-0.004	4.000	4.514	10	M12 x 45	74	19648	26440	6.890	9.06	1.811	2.28	0.235	5.708	3/16	23
B1551	155-10	6.102	+0/-0.004	4.500	4.998	12	M12 x 50	74	27515	34049	7.559	10.36	1.968	2.44	0.236	6.496	3/16	31
H1651	165-10	6.496	+0/-0.004	4.875	5.320	8	M16 x 55	185	37737	47135	8.268	11.42	2.204	2.67	0.233	6.889	3/16	49
B1751	175-10	6.890	+0/-0.004	5.250	5.643	8	M16 x 55	185	41620	50005	8.661	11.81	2.204	2.67	0.233	7.283	3/16	50
B1851	185-10	7.283	+0/-0.004	5.625	5.965	10	M16 x 65	185	56802	65965	9.291	12.99	2.795	3.34	0.273	7.677	3/16	82
H1951	195-10	7.677	+0/-0.004	5.875	6.288	12	M16 x 65	185	71908	84926	9.685	13.78	2.795	3.34	0.273	8.110	3/16	91
B2001	200-10	7.874	+0/-0.004	6.250	6.449	12	M16 x 65	185	80674	87096	9.685	13.78	2.795	3.34	0.273	8.110	3/16	90
B2201	220-10	8.661	+0/-0.004	6.375	7.094	15	M16 x 80	185	92230	116425	10.630	14.57	3.464	4.06	0.298	8.897	1/4	119
B2401	240-10	9.449	+0/-0.004	7.000	7.739	12	M20 x 80	362	130645	161818	11.614	15.95	3.622	4.22	0.299	9.763	1/4	148
B2601	260-10	10.236	+0/-0.004	7.625	8.383	14	M20 x 90	362	162198	205263	12.638	16.93	4.055	4.72	0.318	10.551	1/4	181
H2801	280-10	11.024	+0/-0.005	8.375	9.028	16	M20 x 100	362	210581	253378	13.622	18.11	4.488	5.20	0.356	11.338	5/16	225
H3001	300-10	11.811	+0/-0.005	9.000	9.673	18	M20 x 100	362	257278	306749	14.331	19.10	4.803	5.52	0.359	12.125	5/16	260
H3201	320-10	12.598	+0/-0.005	9.625	10.318	20	M20 x 100	362	310492	359728	15.197	20.48	4.803	5.52	0.359	12.913	5/16	288
H3401	340-10	13.386	+0/-0.005	10.250	10.963	24	M20 x 110	362	392088	462391	16.063	22.44	5.276	6.14	0.432	13.700	5/16	409
H3501	350-10	13.780	+0/-0.005	10.875	11.285	24	M20 x 110	362	432685	474097	17.008	22.84	5.511	6.30	0.395	14.488	5/16	429
H3601	360-10	14.173	+0/-0.005	11.250	11.608	24	M20 x 110	362	451405	487702	17.008	23.23	5.511	6.30	0.395	14.488	5/16	449
H3801	380-10	14.961	+0/-0.005	11.500	12.253	20	M24 x 120	620	535005	623051	18.031	25.40	5.669	6.46	0.396	15.276	5/16	526
H3901	390-10	15.354	+0/-0.005	12.250	12.575	21	M24 x 120	620	633184	673847	18.425	25.99	5.669	6.46	0.396	15.629	3/8	572
H4201	420-10	16.535	+0/-0.006	12.500	13.543	24	M24 x 130	620	685493	829666	19.843	27.17	6.456	7.25	0.397	16.929	3/8	630
H4401	440-10	17.323	+0/-0.006	13.500	14.187	24	M24 x 130	620	768743	852536	20.748	29.53	6.969	7.95	0.491	17.716	3/8	835
H4601	460-10	18.110	+0/-0.006	14.125	14.832	28	M24 x 130	620	934194	1051580	21.535	30.32	6.969	7.95	0.491	18.425	3/8	924
H4801	480-10	18.898	+0/-0.006	14.750	15.477	30	M24 x 150	620	1047086	1176357	22.441	31.50	7.401	8.39	0.495	19.291	1/2	1110
H5001	500-10	19.685	+0/-0.006	15.375	16.122	24	M27 x 150	922	1169590	1310148	23.228	33.46	7.401	8.39	0.495	19.999	1/2	1265

Table 1

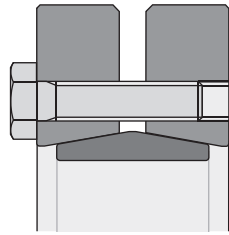
### For Series SD10, SD20 and SD30

Shaft Sizes (inch)		Maximum Diametrical Clearance Between Shaft and Hub Bore
>	≤	
	1 1/8	0.0010
1 1/8	1 15/16	0.0015
1 15/16	4 3/4	0.0020
4 3/4	7	0.0030
7	10	0.0040
10	14	0.0050
14		0.0060

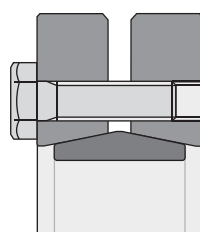
Please note not all catalog items shown are stock. Some products are make-to-order (MTO) based on annual demand. Please verify with your customer service representative for current availability of the item desired.

Notes:

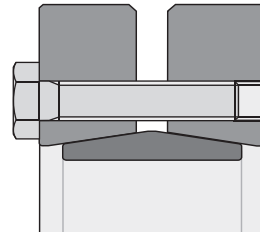
- Inner rings of all shrink discs are supplied with one lengthwise slit.
- Shrink discs are available for shafts up to 40" diameter and in a variety of special designs.
- Maximum shaft sizes listed for Shrink Disc Series SD10 and SD30 reflect equal section moduli of shaft and hub (maximum shaft diameter =  $\frac{d}{1.221}$ ).
- Larger shrink discs for shafts up to 40" diameter are available on request.



SD10  
Standard Duty



SD20  
Light Duty



SD30  
Heavy Duty

## SD10 — Standard Duty

Part Number	Size	SD bore (Hub OD)	Hub OD Tolerance	Shaft Diameter Range		Locking Screws		Ma	Mt		A (mm)	D (mm)	L (mm)	H (mm)	e (mm)	d <sub>1</sub> (mm)	R (mm)	Ship wt (kg)
		d (mm)	T <sub>Ld</sub> (mm)	ds-MIN (mm)	ds-MAX (mm)	Qty	Size	Install Torque (Nm)	Max. Transmitted Torque	ds-MIN (Nm)								
B0241	24-10	24	+ 0 / -0.05	16	20	6	M5 x 16	5	187	377	36	50	14.0	18.0	2	26	1.6	0.2
B0301	30-10	30	+ 0 / -0.05	19	25	7	M5 x 18	5	240	552	44	60	16.0	20.0	2	32	1.6	0.3
B0361	36-10	36	+ 0 / -0.05	22	29	5	M6 x 20	12	427	903	52	72	17.8	22.0	2	38	1.6	0.4
B0441	44-10	44	+ 0 / -0.05	29	36	7	M6 x 20	12	926	1624	61	80	20.0	24.0	2	47	1.6	0.6
B0501	50-10	50	+ 0 / -0.05	35	41	8	M6 x 22	12	1307	2122	70	90	22.0	26.0	2	53	1.6	0.8
B0551	55-10	55	+ 0 / -0.05	38	45	8	M6 x 25	12	1375	2315	75	100	23.0	29.0	3	58	2.4	1.1
B0621	62-10	62	+ 0 / -0.05	44	51	10	M6 x 25	12	2330	3221	86	110	23.0	29.0	3	66	2.4	1.3
B0681	68-10	68	+ 0 / -0.05	48	56	10	M6 x 25	12	2387	3534	86	115	23.0	29.0	3	72	2.4	1.4
B0751	75-10	75	+ 0 / -0.05	54	61	7	M8 x 25	30	3786	5501	100	138	25.0	31.0	3	79	3.2	1.7
B0801	80-10	80	+ 0 / -0.05	60	66	7	M8 x 25	30	4632	5873	100	145	25.0	31.0	3	84	3.2	1.9
B0901	90-10	90	+ 0 / -0.10	64	74	10	M8 x 30	30	6442	9680	114	155	30.0	38.0	4	94	3.2	3.2
H0951	95-10	95	+ 0 / -0.10	70	78	12	M8 x 30	30	9264	12350	124	170	34.0	43.0	4	104	3.2	4.5
B1001	100-10	100	+ 0 / -0.10	73	82	12	M8 x 35	30	9572	12999	124	170	34.0	43.0	4	104	3.2	4.5
B1101	110-10	110	+ 0 / -0.10	79	90	9	M10 x 40	60	12222	17088	136	185	39.0	49.0	5	114	3.2	5.9
B1251	125-10	125	+ 0 / -0.10	89	102	12	M10 x 40	60	18591	26496	160	215	42.0	52.0	5	134	3.2	8.2
B1401	140-10	140	+ 0 / -0.10	102	115	10	M12 x 45	100	26643	35853	175	230	46.0	58.0	6	145	4.8	10.4
B1551	155-10	155	+ 0 / -0.10	114	127	12	M12 x 50	100	37310	46170	192	263	50.0	62.0	6	165	4.8	14.1
H1651	165-10	165	+ 0 / -0.10	124	135	8	M16 x 55	251	51171	63915	210	290	56.0	68.0	6	175	4.8	22.2
B1751	175-10	175	+ 0 / -0.10	133	143	8	M16 x 55	251	56437	67807	220	300	56.0	68.0	6	185	4.8	22.7
B1851	185-10	185	+ 0 / -0.10	143	152	10	M16 x 65	251	77024	89449	236	330	71.0	85.0	7	195	4.8	37.2
H1951	195-10	195	+ 0 / -0.10	149	160	12	M16 x 65	251	97507	115160	246	350	71.0	85.0	7	206	4.8	41.3
B2001	200-10	200	+ 0 / -0.10	159	164	12	M16 x 65	251	109394	118102	246	350	71.0	85.0	7	206	4.8	40.8
B2201	220-10	220	+ 0 / -0.10	162	180	15	M16 x 80	251	125064	157872	270	370	88.0	103.0	8	226	6.4	54.0
B2401	240-10	240	+ 0 / -0.10	178	197	12	M20 x 80	491	177155	219425	295	405	92.0	107.0	8	248	6.4	67.1
B2601	260-10	260	+ 0 / -0.10	194	213	14	M20 x 90	491	219940	278337	321	430	103.0	120.0	8	268	6.4	82.1
H2801	280-10	280	+ 0 / -0.13	213	229	16	M20 x 100	491	285548	343581	346	460	114.0	132.0	9	288	7.9	102.1
H3001	300-10	300	+ 0 / -0.13	229	246	18	M20 x 100	491	348869	415952	364	485	122.0	140.0	9	308	7.9	117.9
H3201	320-10	320	+ 0 / -0.13	244	262	20	M20 x 100	491	421027	487791	386	520	122.0	140.0	9	328	7.9	130.6
H3401	340-10	340	+ 0 / -0.13	260	278	24	M20 x 110	491	531671	627002	408	570	134.0	156.0	11	348	7.9	185.5
H3501	350-10	350	+ 0 / -0.13	276	287	24	M20 x 110	491	586721	642876	432	580	140.0	160.0	10	368	7.9	194.6
H3601	360-10	360	+ 0 / -0.13	286	295	24	M20 x 110	491	612105	661324	432	590	140.0	160.0	10	368	7.9	203.7
H3801	380-10	380	+ 0 / -0.13	292	311	20	M24 x 120	841	725467	844857	458	645	144.0	164.0	10	388	7.9	238.6
H3901	390-10	390	+ 0 / -0.13	311	319	21	M24 x 120	841	858598	913737	468	660	144.0	164.0	10	397	9.5	259.5
H4201	420-10	420	+ 0 / -0.15	318	344	24	M24 x 130	841	929529	1125027	504	690	164.0	184.0	10	430	9.5	285.8
H4401	440-10	440	+ 0 / -0.15	343	360	24	M24 x 130	841	1042416	1156039	527	750	177.0	202.0	12	450	9.5	378.7
H4601	460-10	460	+ 0 / -0.15	359	377	28	M24 x 130	841	1266767	1425942	547	770	177.0	202.0	12	468	9.5	419.1
H4801	480-10	480	+ 0 / -0.15	375	393	30	M24 x 150	841	1419849	1595140	570	800	188.0	213.0	13	490	12.7	503.5
H5001	500-10	500	+ 0 / -0.15	391	409	24	M27 x 150	1250	1585964	1776561	590	850	188.0	213.0	13	508	12.7	573.8

Table 1

## For Series SD10, SD20 and SD30

Shaft Sizes (mm)		Maximum Diametrical Clearance Between Shaft and Hub Bore
>	≤	
	30	0.025
30	50	0.038
50	120	0.051
120	180	0.076
180	255	0.102
255	355	0.127
355		0.152

Please note not all catalog items shown are stock. Some products are make-to-order (MTO) based on annual demand. Please verify with your customer service representative for current availability of the item desired.

# B-LOC Shrink Discs

B-LOC  
Shrink Disc  
**SD<sup>20</sup>**

Inch  
**SD20 — Light Duty**

Part Number	Size	SD bore (Hub OD)		Shaft Diameter Range		Locking Screws		M <sub>a</sub>	M <sub>t</sub>		A (inch)	D (inch)	L (inch)	H (inch)	e (inch)	d <sub>1</sub> (inch)	R (inch)	Ship wt (lb)
		d (inch)	T <sub>1</sub> d (inch)	ds-MIN (inch)	ds-MAX (inch)	Qty	Size	Install Torque (ft lb)	Max. Transmitted Torque									
								ds-MIN (ft lb)	ds-MAX (ft lb)									
H1252	125-20	4.921	+ 0 / -0.004	3.625	4.125	8	M10 x 40	44	9380	13343	6.220	7.28	1.535	2.01	0.238	5.118	1/8	13
H1402	140-20	5.512	+ 0 / -0.004	4.250	5.000	9	M10 x 40	44	13691	20328	6.889	8.67	1.535	2.01	0.238	5.669	1/8	18
H1552	155-20	6.102	+ 0 / -0.004	5.000	5.500	11	M10 x 40	44	21144	27447	7.559	9.65	1.535	2.01	0.238	6.259	1/8	22
H1652	165-20	6.496	+ 0 / -0.004	5.375	5.750	10	M12 x 50	74	30652	36677	8.267	10.24	1.811	2.44	0.315	6.653	3/16	31
H1752	175-20	6.890	+ 0 / -0.004	5.625	6.125	11	M12 x 50	74	34940	43588	8.661	10.83	1.811	2.44	0.315	7.047	3/16	35
H1852	185-20	7.283	+ 0 / -0.004	6.000	6.500	12	M12 x 50	74	41643	51035	8.858	11.62	1.811	2.44	0.315	7.440	3/16	44
H1952	195-20	7.677	+ 0 / -0.004	6.500	7.000	15	M12 x 60	74	58979	71073	9.330	12.40	2.204	2.84	0.318	7.834	3/16	60
H2202	220-20	8.661	+ 0 / -0.004	7.000	7.875	10	M16 x 70	185	76454	100895	10.433	13.59	2.598	3.31	0.356	8.818	3/16	77
H2402	240-20	9.449	+ 0 / -0.004	7.875	8.500	12	M16 x 70	185	107011	129864	11.417	14.57	2.598	3.31	0.356	9.606	1/4	97
H2602	260-20	10.236	+ 0 / -0.004	8.625	9.250	14	M16 x 70	185	139939	166618	12.204	15.55	2.834	3.63	0.398	10.433	1/4	106
H2802	280-20	11.024	+ 0 / -0.005	9.000	9.875	16	M16 x 75	185	158724	200396	13.110	16.74	3.307	4.10	0.397	11.220	1/4	132
H3002	300-20	11.811	+ 0 / -0.005	9.875	10.625	18	M16 x 75	185	229935	271288	14.094	18.11	3.307	4.10	0.397	12.007	1/4	165
H3202	320-20	12.598	+ 0 / -0.005	10.500	11.375	20	M16 x 75	185	238939	292045	14.881	19.49	3.307	4.18	0.437	12.795	1/4	185
H3402	340-20	13.386	+ 0 / -0.005	11.375	12.000	21	M16 x 75	185	281000	320857	15.826	21.07	3.307	4.18	0.437	13.582	1/4	220
H3602	360-20	14.173	+ 0 / -0.005	11.875	12.625	16	M20 x 90	362	341876	398029	16.653	21.85	3.937	4.81	0.437	14.370	5/16	275
H3802	380-20	14.961	+ 0 / -0.005	12.500	13.000	18	M20 x 100	362	403340	444630	17.401	23.03	4.409	5.35	0.471	15.236	5/16	301
H3902	390-20	15.354	+ 0 / -0.005	12.625	13.750	20	M20 x 100	362	446171	549086	17.795	23.43	4.409	5.36	0.476	15.629	5/16	344
H4202	420-20	16.535	+ 0 / -0.006	13.750	14.625	22	M20 x 100	362	544495	625817	19.094	24.81	4.724	5.67	0.473	16.810	5/16	407
H4602	460-20	18.110	+ 0 / -0.006	14.625	16.375	28	M20 x 110	362	704454	927856	20.747	26.97	5.196	6.22	0.512	18.425	3/8	517
H5002	500-20	19.685	+ 0 / -0.006	16.250	17.375	30	M20 x 120	362	860127	1014952	22.519	29.53	5.984	7.01	0.513	19.999	3/8	704

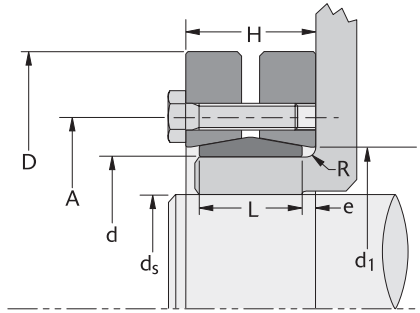
B-LOC  
Shrink Disc  
**SD<sup>20</sup>**

Metric  
**SD20 — Light Duty**

Part Number	Size	SD bore (Hub OD)		Shaft Diameter Range		Locking Screws		M <sub>a</sub>	M <sub>t</sub>		A (mm)	D (mm)	L (mm)	H (mm)	e (mm)	d <sub>1</sub> (mm)	R (mm)	Ship wt (kg)
		d (mm)	T <sub>1</sub> d (mm)	ds-MIN (mm)	ds-MAX (mm)	Qty	Size	Install Torque (Nm)	Max. Transmitted Torque									
								ds-MIN (Nm)	ds-MAX (Nm)									
H1252	125-20	125	+ 0 / -0.10	92	105	8	M10 x 40	60	12719	18093	158	185	39	51	6	130	3.2	5.9
H1402	140-20	140	+ 0 / -0.10	108	127	9	M10 x 40	60	18565	27565	175	220	39	51	6	144	3.2	8.2
H1552	155-20	155	+ 0 / -0.10	127	140	11	M10 x 40	60	28671	37218	192	245	39	51	6	159	3.2	10.0
H1652	165-20	165	+ 0 / -0.10	137	146	10	M12 x 50	100	41564	49734	210	260	46	62	8	169	4.8	14.1
H1752	175-20	175	+ 0 / -0.10	143	156	11	M12 x 50	100	47379	59105	220	275	46	62	8	179	4.8	15.9
H1852	185-20	185	+ 0 / -0.10	152	165	12	M12 x 50	100	56468	69203	225	295	46	62	8	189	4.8	20.0
H1952	195-20	195	+ 0 / -0.10	165	178	15	M12 x 60	100	79976	96375	237	315	56	72	8	199	4.8	27.2
H2202	220-20	220	+ 0 / -0.10	178	200	10	M16 x 70	251	103672	136814	265	345	66	84	9	224	4.8	34.9
H2402	240-20	240	+ 0 / -0.10	200	216	12	M16 x 70	251	145107	176096	290	370	66	84	9	244	6.4	44.0
H2602	260-20	260	+ 0 / -0.10	219	235	14	M16 x 70	251	189757	225934	310	395	72	92	10	265	6.4	48.1
H2802	280-20	280	+ 0 / -0.13	229	251	16	M16 x 75	251	215230	271737	333	425	84	104	10	285	6.4	59.9
H3002	300-20	300	+ 0 / -0.13	251	270	18	M16 x 75	251	311792	367867	358	460	84	104	10	305	6.4	74.8
H3202	320-20	320	+ 0 / -0.13	267	289	20	M16 x 75	251	324001	396013	378	495	84	106	11	325	6.4	83.9
H3402	340-20	340	+ 0 / -0.13	289	305	21	M16 x 75	251	381036	435082	402	535	84	106	11	345	6.4	99.8
H3602	360-20	360	+ 0 / -0.13	302	321	16	M20 x 90	491	463584	539727	423	555	100	122	11	365	7.9	124.7
H3802	380-20	380	+ 0 / -0.13	318	330	18	M20 x 100	491	546929	602918	442	585	112	136	12	387	7.9	136.5
H3902	390-20	390	+ 0 / -0.13	321	349	20	M20 x 100	491	605008	744561	452	595	112	136	12	397	7.9	156.0
H4202	420-20	420	+ 0 / -0.15	349	371	22	M20 x 100	491	738335	848608	485	630	120	144	12	427	7.9	184.6
H4602	460-20	460	+ 0 / -0.15	371	416	28	M20 x 110	491	955240	1258173	527	685	132	158	13	468	9.5	234.5
H5002	500-20	500	+ 0 / -0.15	413	441	30	M20 x 120	491	1166332	1376275	572	750	152	178	13	508	9.5	319.3

Please note not all catalog items shown are stock. Some products are make-to-order (MTO) based on annual demand. Please verify with your customer service representative for current availability of the item desired.

B-LOC  
Shrink Disc  
**SD<sup>30</sup>**  
Inch



## SD30 — Heavy Duty

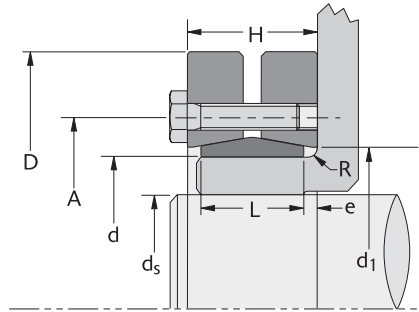
Part Number	Size	SD bore (Hub OD)		Shaft Diameter Range		Locking Screws		M <sub>a</sub> Install Torque (ft lb)	M <sub>t</sub> Max. Transmitted Torque		A (inch)	D (inch)	L (inch)	H (inch)	e (inch)	d <sub>1</sub> (inch)	R (inch)	Ship wt (lb)
		d (inch)	T <sub>L</sub> d (inch)	ds-MIN (inch)	ds-MAX (inch)	Qty	Size		ds-MIN (ft lb)	ds-MAX (ft lb)								
H0443	44-30	1.732	+ 0 / -0.002	1.125	1.419	5	M8 x 30	22	941	1653	2.598	3.35	1.102	1.34	0.119	1.890	1/16	1.4
H0503	50-30	1.969	+ 0 / -0.002	1.375	1.612	7	M8 x 35	22	1761	2749	2.874	3.74	1.181	1.54	0.180	1.984	1/16	1.8
H0553	55-30	2.165	+ 0 / -0.002	1.500	1.773	7	M8 x 35	22	1892	3023	3.071	4.13	1.181	1.54	0.180	2.323	3/32	2.4
B0623	62-30	2.441	+ 0 / -0.002	1.750	1.999	7	M8 x 35	22	2353	3244	3.346	4.53	1.181	1.54	0.180	2.598	3/32	2.9
B0683	68-30	2.677	+ 0 / -0.002	1.875	2.193	8	M8 x 35	22	2861	4173	3.622	4.72	1.181	1.54	0.180	2.835	3/32	3
B0753	75-30	2.953	+ 0 / -0.002	2.125	2.418	7	M10 x 40	44	4552	6529	4.134	5.71	1.417	1.81	0.197	3.307	1/8	3.8
B0803	80-30	3.150	+ 0 / -0.002	2.375	2.580	7	M10 x 40	44	5541	6971	4.134	5.71	1.417	1.81	0.197	3.307	1/8	4.2
B0903	90-30	3.543	+ 0 / -0.004	2.500	2.902	8	M10 x 40	44	5946	8994	4.567	6.30	1.575	1.97	0.198	3.701	1/8	7
B1003	100-30	3.937	+ 0 / -0.004	2.875	3.224	10	M10 x 45	44	9370	12700	4.961	6.69	1.732	2.13	0.199	4.094	1/8	10
H1103	110-30	4.331	+ 0 / -0.004	3.125	3.547	12	M10 x 45	44	12116	16879	5.354	7.28	1.969	2.36	0.196	4.482	1/8	17
H1253	125-30	4.921	+ 0 / -0.004	3.500	4.031	12	M12 x 50	74	20092	28393	6.299	8.47	2.126	2.60	0.237	5.157	3/16	24
B1403	140-30	5.512	+ 0 / -0.004	4.000	4.514	12	M12 x 60	74	23275	31491	6.889	9.06	2.362	2.92	0.279	5.744	3/16	29
H1553	155-30	6.102	+ 0 / -0.004	4.500	4.998	15	M12 x 60	74	34154	42273	7.795	10.36	2.598	3.15	0.276	6.496	3/16	44
H1653	165-30	6.496	+ 0 / -0.004	4.875	5.320	10	M16 x 70	185	46957	58743	8.267	11.42	2.834	3.47	0.318	6.940	3/16	57
H1753	175-30	6.890	+ 0 / -0.004	5.250	5.643	10	M16 x 70	185	51804	62320	8.661	11.82	2.834	3.47	0.318	7.322	3/16	64
H1853	185-30	7.283	+ 0 / -0.004	5.625	5.965	15	M16 x 80	185	86847	100371	9.291	12.99	3.622	4.41	0.394	7.704	3/16	104
H1953	195-30	7.677	+ 0 / -0.004	5.875	6.288	15	M16 x 80	185	89488	105820	9.685	13.78	3.622	4.41	0.394	8.102	1/4	110
H2003	200-30	7.874	+ 0 / -0.004	6.250	6.449	15	M16 x 80	185	100466	108524	9.685	13.78	3.622	4.41	0.394	8.102	1/4	110
H2203	220-30	8.661	+ 0 / -0.004	6.375	7.094	20	M16 x 90	185	123458	155750	10.629	14.57	4.488	5.28	0.396	8.901	1/4	143
B2403	240-30	9.449	+ 0 / -0.004	7.000	7.739	15	M20 x 100	362	162518	201425	11.614	15.95	4.724	5.67	0.473	9.692	1/4	192
H2603	260-30	10.236	+ 0 / -0.005	7.625	8.383	18	M20 x 110	362	207733	263252	12.637	16.93	5.354	6.30	0.473	10.511	1/4	220
H2803	280-30	11.024	+ 0 / -0.005	8.375	9.028	21	M20 x 120	362	276822	332933	13.622	18.11	5.826	6.77	0.472	11.370	5/16	291
H3003	300-30	11.811	+ 0 / -0.005	9.000	9.673	22	M20 x 120	362	313789	374371	14.330	19.10	5.984	6.93	0.473	12.177	5/16	308
H3203	320-30	12.598	+ 0 / -0.005	9.625	10.318	24	M20 x 120	362	368957	427823	15.196	20.48	6.299	7.25	0.476	12.964	5/16	363
H3403	340-30	13.386	+ 0 / -0.005	10.250	10.963	21	M24 x 130	620	489329	577963	16.535	22.44	6.929	7.88	0.476	13.724	5/16	528
H3603	360-30	14.173	+ 0 / -0.005	11.000	11.608	22	M24 x 140	620	562859	642534	17.007	23.23	7.086	8.04	0.477	14.515	3/8	550
H3903	390-30	15.354	+ 0 / -0.005	11.625	12.575	24	M24 x 140	620	628949	762028	18.425	25.99	7.401	8.35	0.475	15.609	3/8	770
H4203	420-30	16.535	+ 0 / -0.006	12.500	13.543	30	M24 x 160	620	852841	1033732	19.842	27.17	8.425	9.37	0.472	16.811	3/8	902
H4603	460-30	18.110	+ 0 / -0.006	13.625	14.832	28	M27 x 170	922	1144559	1403894	21.535	30.32	8.818	9.93	0.556	18.503	1/2	1188
H5003	500-30	19.685	+ 0 / -0.006	14.875	16.122	32	M27 x 180	922	1443359	1749331	23.622	33.47	9.685	10.79	0.552	19.999	1/2	1650

### Notes:

- Inner rings of all shrink discs are supplied with one lengthwise slit.
- Shrink discs are available for shafts up to 40" diameter and in a variety of special designs.
- Maximum shaft sizes listed for Shrink Disc Series SD10 and SD30 reflect equal section moduli of shaft and hub (maximum shaft diameter =  $\frac{d}{1.221}$ ).
- See Table 1 (bottom of page 42) for maximum diametrical clearance between shaft and hub bore.

Please note not all catalog items shown are stock. Some products are make-to-order (MTO) based on annual demand. Please verify with your customer service representative for current availability of the item desired.

B-LOC  
Shrink Disc  
**SD<sup>30</sup>**  
Metric



## SD30 — Heavy Duty

Part Number	Size	SD bore (Hub OD)		Shaft Diameter Range		Locking Screws		Ma	Mt		A (mm)	D (mm)	L (mm)	H (mm)	e (mm)	d <sub>1</sub> (mm)	R (mm)	Ship wt (kg)
		d (mm)	Tld (mm)	ds-MIN (mm)	ds-MAX (mm)	Qty	Size	Install Torque (Nm)	Max. Transmitted Torque									
								ds-MIN (Nm)	ds-MAX (Nm)									
H0443	44-30	44	+ 0 / -0.05	29	36	5	M8 x 30	30	1276	2241	66	85	28	34	3	48	1.6	0.6
H0503	50-30	50	+ 0 / -0.05	35	41	7	M8 x 35	30	2388	3728	73	95	30	39	5	50	1.6	0.8
H0553	55-30	55	+ 0 / -0.05	38	45	7	M8 x 35	30	2566	4099	78	105	30	39	5	59	2.4	1.1
B0623	62-30	62	+ 0 / -0.05	44	51	7	M8 x 35	30	3191	4399	85	115	30	39	5	66	2.4	1.3
B0683	68-30	68	+ 0 / -0.05	48	56	8	M8 x 35	30	3880	5659	92	120	30	39	5	72	2.4	1.4
B0753	75-30	75	+ 0 / -0.05	54	61	7	M10 x 40	60	6173	8853	105	145	36	46	5	84	3.2	1.7
B0803	80-30	80	+ 0 / -0.05	60	66	7	M10 x 40	60	7514	9453	105	145	36	46	5	84	3.2	1.9
B0903	90-30	90	+ 0 / -0.10	64	74	8	M10 x 40	60	8063	12196	116	160	40	50	5	94	3.2	3.2
B1003	100-30	100	+ 0 / -0.10	73	82	10	M10 x 45	60	12706	17221	126	170	44	54	5	104	3.2	4.5
H1103	110-30	110	+ 0 / -0.10	79	90	12	M10 x 45	60	16429	22888	136	185	50	60	5	114	3.2	7.7
H1253	125-30	125	+ 0 / -0.10	89	102	12	M12 x 50	100	27245	38501	160	215	54	66	6	131	4.8	10.9
B1403	140-30	140	+ 0 / -0.10	102	115	12	M12 x 60	100	31561	42702	175	230	60	74	7	146	4.8	13.2
H1553	155-30	155	+ 0 / -0.10	114	127	15	M12 x 60	100	46313	57322	198	263	66	80	7	165	4.8	20.0
H1653	165-30	165	+ 0 / -0.10	124	135	10	M16 x 70	251	63674	79656	210	290	72	88	8	176	4.8	25.9
H1753	175-30	175	+ 0 / -0.10	133	143	10	M16 x 70	251	70246	84506	220	300	72	88	8	186	4.8	29.0
H1853	185-30	185	+ 0 / -0.10	143	152	15	M16 x 80	251	117765	136103	236	330	92	112	10	196	4.8	47.2
H1953	195-30	195	+ 0 / -0.10	149	160	15	M16 x 80	251	121346	143492	246	350	92	112	10	206	6.4	49.9
H2003	200-30	200	+ 0 / -0.10	159	164	15	M16 x 80	251	136232	147159	246	350	92	112	10	206	6.4	49.9
H2203	220-30	220	+ 0 / -0.10	162	180	20	M16 x 90	251	167409	211197	270	370	114	134	10	226	6.4	64.9
B2403	240-30	240	+ 0 / -0.10	178	197	15	M20 x 100	491	220374	273132	295	405	120	144	12	246	6.4	87.1
H2603	260-30	260	+ 0 / -0.13	194	213	18	M20 x 110	491	281686	356970	321	430	136	160	12	267	6.4	99.8
H2803	280-30	280	+ 0 / -0.13	213	229	21	M20 x 120	491	375371	451457	346	460	148	172	12	289	7.9	132.0
H3003	300-30	300	+ 0 / -0.13	229	246	22	M20 x 120	491	425498	507647	364	485	152	176	12	309	7.9	139.7
H3203	320-30	320	+ 0 / -0.13	244	262	24	M20 x 120	491	500306	580128	386	520	160	184	12	329	7.9	164.7
H3403	340-30	340	+ 0 / -0.13	260	278	21	M24 x 130	841	663530	783718	420	570	176	200	12	349	7.9	239.5
H3603	360-30	360	+ 0 / -0.13	279	295	22	M24 x 140	841	763237	871276	432	590	180	204	12	369	9.5	249.5
H3903	390-30	390	+ 0 / -0.13	295	319	24	M24 x 140	841	852855	1033310	468	660	188	212	12	396	9.5	349.3
H4203	420-30	420	+ 0 / -0.15	318	344	30	M24 x 160	841	1156452	1401741	504	690	214	238	12	427	9.5	409.1
H4603	460-30	460	+ 0 / -0.15	346	377	28	M27 x 170	1250	1552022	1903680	547	770	224	252	14	470	12.7	538.9
H5003	500-30	500	+ 0 / -0.15	378	409	32	M27 x 180	1250	1957195	2372093	600	850	246	274	14	508	12.7	748.4

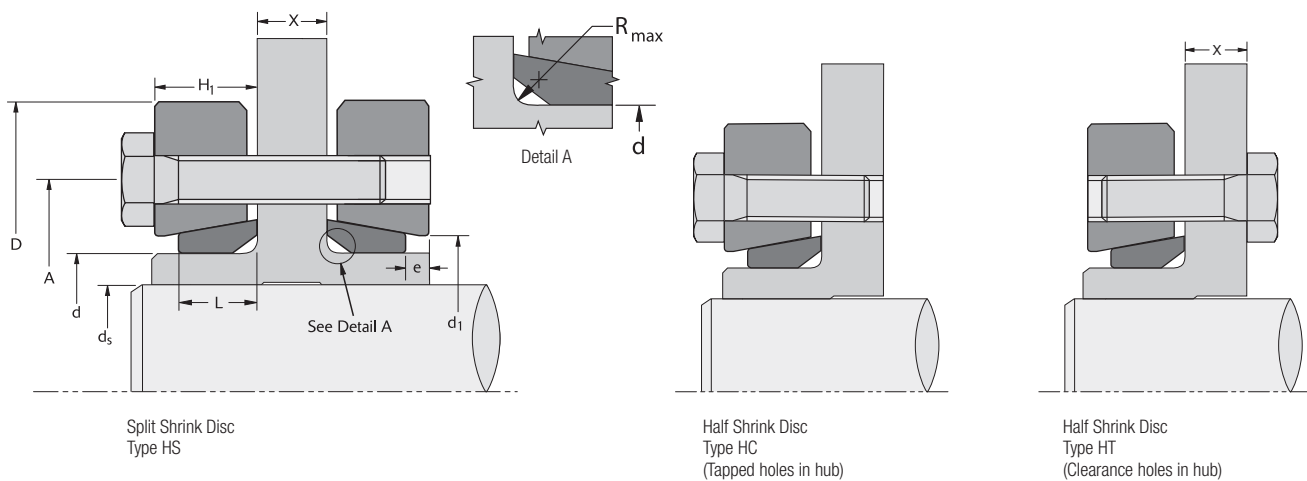
- Notes:
- Inner rings of all shrink discs are supplied with one lengthwise slit.
  - Shrink discs are available for shafts up to 40" diameter and in a variety of special designs.
  - Maximum shaft sizes listed for Shrink Disc Series SD10 and SD30 reflect equal section moduli of shaft and hub (maximum shaft diameter =  $\frac{d}{1.221}$ ).
  - See Table 1 (bottom of page 43) for maximum diametrical clearance between shaft and hub bore.

Please note not all catalog items shown are stock. Some products are make-to-order (MTO) based on annual demand. Please verify with your customer service representative for current availability of the item desired.

# B-LOC Split and Half Shrink Discs Engineering Data

To complement our standard line of B-LOC Shrink Discs, we also offer Split and Half Shrink Discs. These versions are available in all bore sizes listed for standard Shrink Discs. The Split Shrink Disc design allows greater mounting versatility on symmetrical hubs. For applications with tight space constraints and lower performance requirements, Half Shrink Discs provide several compact mounting options.

- **Reduced dimensions** – Perfect for applications with restricted space.
- **Easy Installation** – Standard screws mean installation and removal are achieved using standard tools.
- **Infinite Adjustment** – Simplified design allows hubs to be located and locked virtually anywhere on the shaft.
- **Easy Removal** – Units are self-releasing once the locking screws are loosened, making removal a breeze.
- **Reliability you can count on** – B-LOC Shrink Discs can be tightened and released as often as required.



**Note:** Dimension X is required when ordering Split or Half Shrink Disc Type HT. See Table 1 at bottom left of page 46 for web clearance hole data. Please consult B-LOC Technical Services at [AE@fenner.com](mailto:AE@fenner.com) to determine appropriate screw length for your specific application.

## Split Shrink Discs

Standard and Light Duty Series: If dimension  $X > 2 \times L$  then the transmissible torque may be reduced by up to 50%.

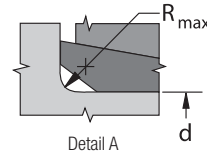
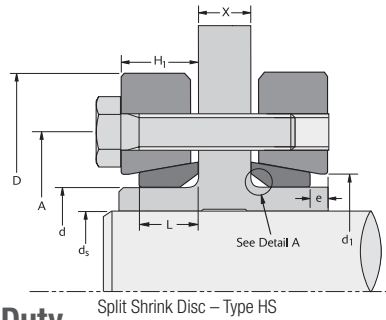
Heavy Duty Series: If dimension  $X > 1 \times L$  then the transmissible torque may be reduced by up to 50%.

## Half Shrink Discs

Half Shrink Discs HC/HT transmit 50% of the  $M_t$  of Shrink Discs and Split Shrink Discs.

# B-LOC Split Shrink Discs

B-LOC  
Shrink Disc  
**Split  
Inch**



Dimension X is required when ordering Split Shrink Discs. See Table 1 at bottom left for web clearance hole data.

## SD10 — Split SD — Standard Duty

Part Number	Size	SD bore (Hub OD)		Shaft Diameter Range		Locking Screws		M <sub>a</sub>		M <sub>t</sub>		A (inch)	D (inch)	L (inch)	H <sub>1</sub> (inch)	e (inch)	d <sub>1</sub> (inch)	R (inch)	Ship wt (lb)
		d (inch)	T/d (inch)	ds-MIN (inch)	ds-MAX (inch)	Qty	Size	Install Torque (ft lb)	Max. Transmitted Torque (ft lb)										
HS0241	24-10	0.945	+ 0 / -0.002	0.625	0.774	6	M5	3.6	138	278	1.417	1.97	0.374	0.453	0.080	1.023	1/16	0.5	
HS0301	30-10	1.181	+ 0 / -0.002	0.750	0.967	7	M5	3.6	177	407	1.732	2.36	0.413	0.493	0.081	1.259	1/16	0.7	
HS0361	36-10	1.417	+ 0 / -0.002	0.875	1.161	5	M6	8.7	315	666	2.047	2.83	0.448	0.533	0.085	1.496	1/16	0.9	
HS0441	44-10	1.732	+ 0 / -0.002	1.125	1.419	7	M6	8.7	683	1198	2.402	3.15	0.492	0.568	0.077	1.850	1/16	1.4	
HS0501	50-10	1.969	+ 0 / -0.002	1.375	1.612	8	M6	8.7	964	1565	2.756	3.54	0.531	0.608	0.077	2.086	1/16	1.8	
HS0551	55-10	2.165	+ 0 / -0.002	1.500	1.773	8	M6	8.7	1014	1707	2.953	3.94	0.551	0.668	0.118	2.283	3/32	2.4	
HS0621	62-10	2.441	+ 0 / -0.002	1.750	1.999	10	M6	8.7	1718	2375	3.386	4.33	0.551	0.668	0.118	2.598	3/32	2.9	
HS0681	68-10	2.677	+ 0 / -0.002	1.875	2.193	10	M6	8.7	1760	2606	3.386	4.53	0.551	0.668	0.118	2.834	3/32	3	
HS0751	75-10	2.953	+ 0 / -0.002	2.125	2.418	7	M8	22	2792	4057	3.937	5.43	0.689	0.807	0.118	3.110	1/8	3.8	
HS0801	80-10	3.150	+ 0 / -0.002	2.375	2.580	7	M8	22	3416	4331	3.937	5.71	0.689	0.807	0.118	3.307	1/8	4.2	
HS0901	90-10	3.543	+ 0 / -0.004	2.500	2.902	10	M8	22	4751	7139	4.488	6.10	0.788	0.942	0.155	3.700	1/8	7	
HS0951	95-10	3.740	+ 0 / -0.004	2.750	3.063	12	M8	22	6832	9108	4.882	6.69	0.866	1.042	0.176	4.094	1/8	10	
HS1001	100-10	3.937	+ 0 / -0.004	2.875	3.224	12	M8	22	7059	9586	4.882	6.69	0.866	1.042	0.176	4.094	1/8	10	
HS1101	110-10	4.331	+ 0 / -0.004	3.125	3.547	9	M10	44	9013	12602	5.354	7.28	0.965	1.162	0.198	4.488	1/8	13	
HS1251	125-10	4.921	+ 0 / -0.004	3.500	4.031	12	M10	44	13710	19540	6.299	8.46	1.024	1.217	0.194	5.275	1/8	18	
HS1401	140-10	5.512	+ 0 / -0.004	4.000	4.514	10	M12	74	19648	26440	6.890	9.06	1.103	1.337	0.235	5.708	3/16	23	
HS1551	155-10	6.102	+ 0 / -0.004	4.500	4.998	12	M12	74	27515	34049	7.559	10.36	1.181	1.417	0.236	6.496	3/16	31	
HS1651	165-10	6.496	+ 0 / -0.004	4.875	5.320	8	M16	185	37737	47135	8.268	11.42	1.299	1.532	0.233	6.889	3/16	49	
HS1751	175-10	6.890	+ 0 / -0.004	5.250	5.643	8	M16	185	41620	50005	8.661	11.81	1.299	1.532	0.233	7.283	3/16	50	
HS1851	185-10	7.283	+ 0 / -0.004	5.625	5.965	10	M16	185	56802	65965	9.291	12.99	1.595	1.867	0.273	7.677	3/16	82	
HS1951	195-10	7.677	+ 0 / -0.004	5.875	6.288	12	M16	185	71908	84926	9.685	13.78	1.595	1.867	0.273	8.110	3/16	91	
HS2001	200-10	7.874	+ 0 / -0.004	6.250	6.449	12	M16	185	80674	87096	9.685	13.78	1.595	1.867	0.273	8.110	3/16	90	
HS2201	220-10	8.661	+ 0 / -0.004	6.375	7.094	15	M16	185	92230	116425	10.630	14.57	2.027	2.325	0.298	8.897	1/4	119	
HS2401	240-10	9.449	+ 0 / -0.004	7.000	7.739	12	M20	362	130645	161818	11.614	15.95	2.106	2.405	0.299	9.763	1/4	148	
HS2601	260-10	10.236	+ 0 / -0.004	7.625	8.383	14	M20	362	162198	205263	12.638	16.93	2.323	2.640	0.318	10.551	1/4	181	
HS2801	280-10	11.024	+ 0 / -0.005	8.375	9.028	16	M20	362	210581	253378	13.622	18.11	2.638	2.994	0.356	11.338	5/16	225	
HS3001	300-10	11.811	+ 0 / -0.005	9.000	9.673	18	M20	362	257278	306749	14.331	19.10	2.796	3.154	0.359	12.125	5/16	260	
HS3201	320-10	12.598	+ 0 / -0.005	9.625	10.318	20	M20	362	310492	359728	15.197	20.48	2.796	3.154	0.359	12.913	5/16	288	
HS3401	340-10	13.386	+ 0 / -0.005	10.250	10.963	24	M20	362	392088	462391	16.063	22.44	3.032	3.464	0.432	13.700	5/16	409	
HS3501	350-10	13.780	+ 0 / -0.005	10.875	11.285	24	M20	362	432685	474097	17.008	22.84	3.150	3.544	0.395	14.488	5/16	429	
HS3601	360-10	14.173	+ 0 / -0.005	11.250	11.608	24	M20	362	451405	487702	17.008	23.23	3.150	3.544	0.395	14.488	5/16	449	
HS3801	380-10	14.961	+ 0 / -0.005	11.500	12.253	20	M24	620	535005	623051	18.031	25.40	3.229	3.624	0.396	15.276	5/16	526	
HS3901	390-10	15.354	+ 0 / -0.005	12.250	12.575	21	M24	620	633184	673847	18.425	25.99	3.327	3.722	0.396	15.629	3/8	572	
HS4201	420-10	16.535	+ 0 / -0.006	12.500	13.543	24	M24	620	685493	829666	19.843	27.17	3.720	4.117	0.397	16.929	3/8	630	
HS4401	440-10	17.323	+ 0 / -0.006	13.500	14.187	24	M24	620	768743	852536	20.748	29.53	3.977	4.467	0.491	17.716	3/8	835	
HS4601	460-10	18.110	+ 0 / -0.006	14.125	14.832	28	M24	620	934194	1051580	21.535	30.32	3.977	4.467	0.491	18.425	3/8	924	
HS4801	480-10	18.898	+ 0 / -0.006	14.750	15.477	30	M24	620	1047086	1176357	22.441	31.50	4.292	4.786	0.495	19.291	1/2	1110	
HS5001	500-10	19.685	+ 0 / -0.006	15.375	16.122	24	M27	922	1169590	1310148	23.228	33.46	4.292	4.786	0.495	19.999	1/2	1265	

### Specifications for Web Clearance Holes (diameter in inches)

Screw Size	M5	M6	M8	M10	M12	M16	M20	M24	M27
Split Shrink Disc	0.281	0.328	0.406	0.500	0.594	0.750	0.906	1.063	1.188
Half Shrink Disc HT	0.219	0.266	0.359	0.438	0.531	0.719	0.875	1.031	1.156

Table 1

#### Notes:

- Screw length must be determined based on your X dimension. Please consult Technical Services.
- Inner rings of all shrink discs are supplied with one lengthwise slit.
- Shrink discs are available for shafts up to 40" diameter and in a variety of special designs.
- Maximum shaft sizes listed for Shrink Disc Series SD10 and SD30 reflect equal section moduli of shaft and hub (maximum shaft diameter =  $\frac{d}{1.221}$ ).
- Larger shrink discs for shafts up to 40" diameter are available on request.

## For Series SD10, SD20 and SD30

Shaft Sizes (inch)	Maximum Diametrical Clearance Between Shaft and Hub Bore	
	>	≤
1 1/8	1 1/8	0.0010
1 1/8	1 15/16	0.0015
1 1/16	4 3/4	0.0020
4 3/4	7	0.0030
7	10	0.0040
10	14	0.0050
14		0.0060

Please note not all catalog items shown are stock. Some products are make-to-order (MTO) based on annual demand. Please verify with your customer service representative for current availability of the item desired.

B-LOC  
Shrink Disc  
**Split**  
Metric

## SD10 — Split SD — Standard Duty

Part Number	Size	SD bore (Hub OD)		Hub OD Tolerance		Shaft Diameter Range		Locking Screws		M <sub>a</sub> Install Torque (Nm)	M <sub>t</sub> Max. Transmitted Torque		A (mm)	D (mm)	L (mm)	H <sub>1</sub> (mm)	e (mm)	d <sub>1</sub> (mm)	R (mm)	Ship wt (kg)
		d (mm)	T <sub>L</sub> d (mm)	ds-MIN (mm)	ds-MAX (mm)	Qty	Size	ds-MIN (Nm)	ds-MAX (Nm)											
HS0241	24-10	24	+ 0 / -0.05	16	20	6	M5	5	187	377	36	50	9.5	11.5	2	26	1.6	0.2		
HS0301	30-10	30	+ 0 / -0.05	19	25	7	M5	5	240	552	44	60	10.5	12.5	2	32	1.6	0.3		
HS0361	36-10	36	+ 0 / -0.05	22	29	5	M6	12	427	903	52	72	11.4	13.5	2	38	1.6	0.4		
HS0441	44-10	44	+ 0 / -0.05	29	36	7	M6	12	926	1624	61	80	12.5	14.5	2	47	1.6	0.6		
HS0501	50-10	50	+ 0 / -0.05	35	41	8	M6	12	1307	2122	70	90	13.5	15.5	2	53	1.6	0.8		
HS0551	55-10	55	+ 0 / -0.05	38	45	8	M6	12	1375	2315	75	100	14.0	17.0	3	58	2.4	1.1		
HS0621	62-10	62	+ 0 / -0.05	44	51	10	M6	12	2330	3221	86	110	14.0	17.0	3	66	2.4	1.3		
HS0681	68-10	68	+ 0 / -0.05	48	56	10	M6	12	2387	3534	86	115	14.0	17.0	3	72	2.4	1.4		
HS0751	75-10	75	+ 0 / -0.05	54	61	7	M8	30	3786	5501	100	138	17.5	20.5	3	79	3.2	1.7		
HS0801	80-10	80	+ 0 / -0.05	60	66	7	M8	30	4632	5873	100	145	17.5	20.5	3	84	3.2	1.9		
HS0901	90-10	90	+ 0 / -0.10	64	74	10	M8	30	6442	9680	114	155	20.0	24.0	4	94	3.2	3.2		
HS0951	95-10	95	+ 0 / -0.10	70	78	12	M8	30	9264	12350	124	170	22.0	26.5	4	104	3.2	4.5		
HS1001	100-10	100	+ 0 / -0.10	73	82	12	M8	30	9572	12999	124	170	22.0	26.5	4	104	3.2	4.5		
HS1101	110-10	110	+ 0 / -0.10	79	90	9	M10	60	12222	17088	136	185	24.5	29.5	5	114	3.2	5.9		
HS1251	125-10	125	+ 0 / -0.10	89	102	12	M10	60	18591	26496	160	215	26.0	31.0	5	134	3.2	8.2		
HS1401	140-10	140	+ 0 / -0.10	102	115	10	M12	100	26643	35853	175	230	28.0	34.0	6	145	4.8	10.4		
HS1551	155-10	155	+ 0 / -0.10	114	127	12	M12	100	37310	46170	192	263	30.0	36.0	6	165	4.8	14.1		
HS1651	165-10	165	+ 0 / -0.10	124	135	8	M16	251	51171	63915	210	290	33.0	39.0	6	175	4.8	22.2		
HS1751	175-10	175	+ 0 / -0.10	133	143	8	M16	251	56437	67807	220	300	33.0	39.0	6	185	4.8	22.7		
HS1851	185-10	185	+ 0 / -0.10	143	152	10	M16	251	77024	89449	236	330	40.5	47.5	7	195	4.8	37.2		
HS1951	195-10	195	+ 0 / -0.10	149	160	12	M16	251	97507	115160	246	350	40.5	47.5	7	206	4.8	41.3		
HS2001	200-10	200	+ 0 / -0.10	159	164	12	M16	251	109394	118102	246	350	40.5	47.5	7	206	4.8	40.8		
HS2201	220-10	220	+ 0 / -0.10	162	180	15	M16	251	125064	157872	270	370	51.5	59.0	8	226	6.4	54.0		
HS2401	240-10	240	+ 0 / -0.10	178	197	12	M20	491	177155	219425	295	405	53.5	61.0	8	248	6.4	67.1		
HS2601	260-10	260	+ 0 / -0.10	194	213	14	M20	491	219940	278337	321	430	59.0	67.0	8	268	6.4	82.1		
HS2801	280-10	280	+ 0 / -0.13	213	229	16	M20	491	285548	343581	346	460	67.0	76.0	9	288	7.9	102.1		
HS3001	300-10	300	+ 0 / -0.13	229	246	18	M20	491	348869	415952	364	485	71.0	80.0	9	308	7.9	117.9		
HS3201	320-10	320	+ 0 / -0.13	244	262	20	M20	491	421027	487791	386	520	71.0	80.0	9	328	7.9	130.6		
HS3401	340-10	340	+ 0 / -0.13	260	278	24	M20	491	531671	627002	408	570	77.0	88.0	11	348	7.9	185.5		
HS3501	350-10	350	+ 0 / -0.13	276	287	24	M20	491	586721	642876	432	580	80.0	90.0	10	368	7.9	194.6		
HS3601	360-10	360	+ 0 / -0.13	286	295	24	M20	491	612105	661324	432	590	80.0	90.0	10	368	7.9	203.7		
HS3801	380-10	380	+ 0 / -0.13	292	311	20	M24	841	725467	844857	458	645	82.0	92.0	10	388	7.9	238.6		
HS3901	390-10	390	+ 0 / -0.13	311	319	21	M24	841	858598	913737	468	660	84.5	94.5	10	397	9.5	259.5		
HS4201	420-10	420	+ 0 / -0.15	318	344	24	M24	841	929529	1125027	504	690	94.5	104.5	10	430	9.5	285.8		
HS4401	440-10	440	+ 0 / -0.15	343	360	24	M24	841	1042416	1156039	527	750	101.0	113.5	12	450	9.5	378.7		
HS4601	460-10	460	+ 0 / -0.15	359	377	28	M24	841	1266767	1425942	547	770	101.0	113.5	12	468	9.5	419.1		
HS4801	480-10	480	+ 0 / -0.15	375	393	30	M24	841	1419849	1595140	570	800	109.0	121.5	13	490	12.7	503.5		
HS5001	500-10	500	+ 0 / -0.15	391	409	24	M27	1250	1585964	1776561	590	850	109.0	121.5	13	508	12.7	573.8		

### Specifications for Web Clearance Holes (diameter in mm)

Screw Size	M5	M6	M8	M10	M12	M16	M20	M24	M27
Split Shrink Disc	7	8	10	13	15	19	23	27	30
Half Shrink Disc HT	5.5	7	9	11	13.5	18	22	26	30

Table 1

## Notes:

- Screw length must be determined based on your X dimension. Please consult Technical Services.
- Inner rings of all shrink discs are supplied with one lengthwise slit.
- Shrink discs are available for shafts up to 40" diameter and in a variety of special designs.
- Maximum shaft sizes listed for Shrink Disc Series SD10 and SD30 reflect equal section moduli of shaft and hub (maximum shaft diameter =  $\frac{d}{1.221}$ ).
- Larger shrink discs for shafts up to 40" diameter are available on request.

### For Series SD10, SD20 and SD30

Shaft Sizes (mm)		Maximum Diametrical Clearance Between Shaft and Hub Bore
>	≤	
	30	0.025
30	50	0.038
50	120	0.051
120	180	0.076
180	255	0.102
255	355	0.127
355		0.152

Please note not all catalog items shown are stock. Some products are make-to-order (MTO) based on annual demand. Please verify with your customer service representative for current availability of the item desired.

# B-LOC Split Shrink Discs

B-LOC  
Shrink Disc  
**Split**  
Inch

## SD20 — Split SD — Light Duty

Part Number	Size	SD bore (Hub OD)		Hub OD Tolerance		Shaft Diameter Range		Locking Screws		M <sub>a</sub>	M <sub>t</sub>		A (inch)	D (inch)	L (inch)	H <sub>1</sub> (inch)	e (inch)	d <sub>1</sub> (inch)	R (inch)	Ship wt (lb)
		d (inch)	T <sub>L</sub> d (inch)	ds-MIN (inch)	ds-MAX (inch)	Qty	Size	Install Torque (ft lb)	Max. Transmitted Torque (ft lb)											
								ds-MIN	ds-MAX											
HS1252	125-20	4.921	+0 / -0.004	3.625	4.125	8	M10	44	9380	13343	6.220	7.28	0.965	1.202	0.238	5.118	1/8	13		
HS1402	140-20	5.512	+0 / -0.004	4.250	5.000	9	M10	44	13691	20328	6.889	8.67	0.965	1.202	0.238	5.669	1/8	18		
HS1552	155-20	6.102	+0 / -0.004	5.000	5.500	11	M10	44	21144	27447	7.559	9.65	0.965	1.202	0.238	6.259	1/8	22		
HS1652	165-20	6.496	+0 / -0.004	5.375	5.750	10	M12	74	30652	36677	8.267	10.24	1.103	1.417	0.315	6.653	3/16	31		
HS1752	175-20	6.890	+0 / -0.004	5.625	6.125	11	M12	74	34940	43588	8.661	10.83	1.103	1.417	0.315	7.047	3/16	35		
HS1852	185-20	7.283	+0 / -0.004	6.000	6.500	12	M12	74	41643	51035	8.858	11.62	1.103	1.417	0.315	7.440	3/16	44		
HS1952	195-20	7.677	+0 / -0.004	6.500	7.000	15	M12	74	58979	71073	9.330	12.40	1.299	1.617	0.318	7.834	3/16	60		
HS2202	220-20	8.661	+0 / -0.004	7.000	7.875	10	M16	185	76454	100895	10.433	13.59	1.496	1.852	0.356	8.818	3/16	77		
HS2402	240-20	9.449	+0 / -0.004	7.875	8.500	12	M16	185	107011	129864	11.417	14.57	1.594	1.950	0.356	9.606	1/4	97		
HS2602	260-20	10.236	+0 / -0.004	8.625	9.250	14	M16	185	139939	166618	12.204	15.55	1.712	2.110	0.398	10.433	1/4	106		
HS2802	280-20	11.024	+0 / -0.005	9.000	9.875	16	M16	185	158724	200396	13.110	16.74	1.949	2.345	0.397	11.220	1/4	132		
HS3002	300-20	11.811	+0 / -0.005	9.875	10.625	18	M16	185	229935	271288	14.094	18.11	1.949	2.345	0.397	12.007	1/4	165		
HS3202	320-20	12.598	+0 / -0.005	10.500	11.375	20	M16	185	238939	292045	14.881	19.49	1.949	2.385	0.437	12.795	1/4	185		
HS3402	340-20	13.386	+0 / -0.005	11.375	12.000	21	M16	185	281000	320857	15.826	21.07	1.949	2.385	0.437	13.582	1/4	220		
HS3602	360-20	14.173	+0 / -0.005	11.875	12.625	16	M20	362	341876	398029	16.653	21.85	2.363	2.799	0.437	14.370	5/16	275		
HS3802	380-20	14.961	+0 / -0.005	12.500	13.000	18	M20	362	403340	444630	17.401	23.03	2.599	3.069	0.471	15.236	5/16	301		
HS3902	390-20	15.354	+0 / -0.005	12.625	13.750	20	M20	362	446171	549086	17.795	23.43	2.599	3.074	0.476	15.629	5/16	344		
HS4202	420-20	16.535	+0 / -0.006	13.750	14.625	22	M20	362	544495	625817	19.094	24.81	2.756	3.229	0.473	16.810	5/16	407		
HS4602	460-20	18.110	+0 / -0.006	14.625	16.375	28	M20	362	704454	927856	20.747	26.97	3.090	3.602	0.512	18.425	3/8	517		
HS5002	500-20	19.685	+0 / -0.006	16.250	17.375	30	M20	362	860127	1014952	22.519	29.53	3.484	3.997	0.513	19.999	3/8	704		

## SD30 — Split SD — Heavy Duty

Part Number	Size	SD bore (Hub OD)		Hub OD Tolerance		Shaft Diameter Range		Locking Screws		M <sub>a</sub>	M <sub>t</sub>		A (inch)	D (inch)	L (inch)	H <sub>1</sub> (inch)	e (inch)	d <sub>1</sub> (inch)	R (inch)	Ship wt (lb)
		d (inch)	T <sub>L</sub> d (inch)	ds-MIN (inch)	ds-MAX (inch)	Qty	Size	Install Torque (ft lb)	Max. Transmitted Torque (ft lb)											
								ds-MIN	ds-MAX											
HS0443	44-30	1.732	+0 / -0.002	1.125	1.419	5	M8	22	941	1653	2.598	3.35	0.649	0.768	0.119	1.890	1/16	1.4		
HS0503	50-30	1.969	+0 / -0.002	1.375	1.612	7	M8	22	1761	2749	2.874	3.74	0.689	0.868	0.180	1.984	1/16	1.8		
HS0553	55-30	2.165	+0 / -0.002	1.500	1.773	7	M8	22	1892	3023	3.071	4.13	0.689	0.868	0.180	2.323	3/32	2.4		
HS0623	62-30	2.441	+0 / -0.002	1.750	1.999	7	M8	22	2353	3244	3.346	4.53	0.689	0.868	0.180	2.598	3/32	2.9		
HS0683	68-30	2.677	+0 / -0.002	1.875	2.193	8	M8	22	2861	4173	3.622	4.72	0.689	0.868	0.180	2.835	3/32	3		
HS0753	75-30	2.953	+0 / -0.002	2.125	2.418	7	M10	44	4552	6529	4.134	5.71	0.906	1.102	0.197	3.307	1/8	3.8		
HS0803	80-30	3.150	+0 / -0.002	2.375	2.580	7	M10	44	5541	6971	4.134	5.71	0.906	1.102	0.197	3.307	1/8	4.2		
HS0903	90-30	3.543	+0 / -0.004	2.500	2.902	8	M10	44	5946	8994	4.567	6.30	0.985	1.182	0.198	3.701	1/8	7		
HS1003	100-30	3.937	+0 / -0.004	2.875	3.224	10	M10	44	9370	12700	4.961	6.69	1.063	1.262	0.199	4.094	1/8	10		
HS1103	110-30	4.331	+0 / -0.004	3.125	3.547	12	M10	44	12116	16879	5.354	7.28	1.182	1.377	0.196	4.482	1/8	17		
HS1253	125-30	4.921	+0 / -0.004	3.500	4.031	12	M12	74	20092	28393	6.299	8.47	1.260	1.497	0.237	5.157	3/16	24		
HS1403	140-30	5.512	+0 / -0.004	4.000	4.514	12	M12	74	23275	31491	6.889	9.06	1.378	1.657	0.279	5.744	3/16	29		
HS1553	155-30	6.102	+0 / -0.004	4.500	4.998	15	M12	74	34154	42273	7.795	10.36	1.496	1.772	0.276	6.496	3/16	44		
HS1653	165-30	6.496	+0 / -0.004	4.875	5.320	10	M16	185	46957	58743	8.267	11.42	1.614	1.932	0.318	6.940	3/16	57		
HS1753	175-30	6.890	+0 / -0.004	5.250	5.643	10	M16	185	51804	62320	8.661	11.82	1.614	1.932	0.318	7.322	3/16	64		
HS1853	185-30	7.283	+0 / -0.004	5.625	5.965	15	M16	185	86847	100371	9.291	12.99	2.008	2.402	0.394	7.704	3/16	104		
HS1953	195-30	7.677	+0 / -0.004	5.875	6.288	15	M16	185	89488	105820	9.685	13.78	2.106	2.500	0.394	8.102	1/4	110		
HS2003	200-30	7.874	+0 / -0.004	6.250	6.449	15	M16	185	100466	108524	9.685	13.78	2.106	2.500	0.394	8.102	1/4	110		
HS2203	220-30	8.661	+0 / -0.004	6.375	7.094	20	M16	185	123458	155750	10.629	14.57	2.539	2.935	0.396	8.901	1/4	143		
HS2403	240-30	9.449	+0 / -0.004	7.000	7.739	15	M20	362	162518	201425	11.614	15.95	2.657	3.130	0.473	9.692	1/4	192		
HS2603	260-30	10.236	+0 / -0.005	7.625	8.383	18	M20	362	207733	263252	12.637	16.93	2.972	3.445	0.473	10.511	1/4	220		
HS2803	280-30	11.024	+0 / -0.005	8.375	9.028	21	M20	362	276822	332933	13.622	18.11	3.307	3.779	0.472	11.370	5/16	291		
HS3003	300-30	11.811	+0 / -0.005	9.000	9.673	22	M20	362	313789	374371	14.330	19.10	3.386	3.859	0.473	12.177	5/16	308		
HS3203	320-30	12.598	+0 / -0.005	9.625	10.318	24	M20	362	368957	427823	15.196	20.48	3.544	4.019	0.476	12.964	5/16	363		
HS3403	340-30	13.386	+0 / -0.005	10.250	10.963	21	M24	620	489329	577963	16.535	22.44	3.859	4.334	0.476	13.724	5/16	528		
HS3603	360-30	14.173	+0 / -0.005	11	11.608	22	M24	620	562859	642534	17.007	23.23	4.035	4.512	0.477	14.515	3/8	550		
HS3903	390-30	15.354	+0 / -0.005	11.625	12.575	24	M24	620	628949	762028	18.425	25.99	4.193	4.667	0.475	15.609	3/8	770		
HS4203	420-30	16.535	+0 / -0.006	12.500	13.543	30	M24	620	852841	1033732	19.842	27.17	4.705	5.177	0.472	16.811	3/8	902		
HS4603	460-30	18.110	+0 / -0.006	13.625	14.832	28	M27	922	1144559	1403894	21.535	30.32	5.000	5.556	0.556	18.503	1/2	1188		
HS5003	500-30	19.685	+0 / -0.006	14.875	16.122	32	M27	922	1443359	1749331	23.622	33.47	5.434	5.986	0.552	19.999	1/2	1650		

Please note not all catalog items shown are stock. Some products are make-to-order (MTO) based on annual demand. Please verify with your customer service representative for current availability of the item desired.

### SD20 — Split SD — Light Duty

Part Number	Size	SD bore (Hub OD)		Hub OD Tolerance		Shaft Diameter Range		Locking Screws		M <sub>a</sub>		M <sub>t</sub>		A (mm)	D (mm)	L (mm)	H <sub>1</sub> (mm)	e (mm)	d <sub>1</sub> (mm)	R (mm)	Ship wt (kg)
		d (mm)	T <sub>Ld</sub> (mm)	ds-MIN (mm)	ds-MAX (mm)	Qty	Size	Install Torque (Nm)	Max. Transmitted Torque												
									ds-MIN (Nm)	ds-MAX (Nm)											
HS1252	125-20	125	+ 0 / -0.10	92	105	8	M10	44	12719	18093	158	185	24.5	30.5	6	130	3.2	5.9			
HS1402	140-20	140	+ 0 / -0.10	108	127	9	M10	44	18565	27565	175	220	24.5	30.5	6	144	3.2	8.2			
HS1552	155-20	155	+ 0 / -0.10	127	140	11	M10	44	28671	37218	192	245	24.5	30.5	6	159	3.2	10.0			
HS1652	165-20	165	+ 0 / -0.10	137	146	10	M12	74	41564	49734	210	260	28.0	36.0	8	169	4.8	14.1			
HS1752	175-20	175	+ 0 / -0.10	143	156	11	M12	74	47379	59105	220	275	28.0	36.0	8	179	4.8	15.9			
HS1852	185-20	185	+ 0 / -0.10	152	165	12	M12	74	56468	69203	225	295	28.0	36.0	8	189	4.8	20.0			
HS1952	195-20	195	+ 0 / -0.10	165	178	15	M12	74	79976	96375	237	315	33.0	41.0	8	199	4.8	27.2			
HS2202	220-20	220	+ 0 / -0.10	178	200	10	M16	185	103672	136814	265	345	38.0	47.0	9	224	4.8	34.9			
HS2402	240-20	240	+ 0 / -0.10	200	216	12	M16	185	145107	176096	290	370	40.5	49.5	9	244	6.4	44.0			
HS2602	260-20	260	+ 0 / -0.10	219	235	14	M16	185	189757	225934	310	395	43.5	53.5	10	265	6.4	48.1			
HS2802	280-20	280	+ 0 / -0.10	229	251	16	M16	185	215230	271737	333	425	49.5	59.5	10	285	6.4	59.9			
HS3002	300-20	300	+ 0 / -0.13	251	270	18	M16	185	311792	367867	358	460	49.5	59.5	10	305	6.4	74.8			
HS3202	320-20	320	+ 0 / -0.13	267	289	20	M16	185	324001	396013	378	495	49.5	60.5	11	325	6.4	83.9			
HS3402	340-20	340	+ 0 / -0.13	289	305	21	M16	185	381036	435082	402	535	49.5	60.5	11	345	6.4	99.8			
HS3602	360-20	360	+ 0 / -0.13	302	321	16	M20	362	463584	539727	423	555	60.0	71.0	11	365	7.9	124.7			
HS3802	380-20	380	+ 0 / -0.13	318	330	18	M20	362	546929	602918	442	585	66.0	78.0	12	387	7.9	136.5			
HS3902	390-20	390	+ 0 / -0.13	321	349	20	M20	362	605008	744561	452	595	66.0	78.0	12	397	7.9	156.0			
HS4202	420-20	420	+ 0 / -0.15	349	371	22	M20	362	738335	848608	485	630	70.0	82.0	12	427	7.9	184.6			
HS4602	460-20	460	+ 0 / -0.15	371	416	28	M20	362	955240	1258173	527	685	78.5	91.5	13	468	9.5	234.5			
HS5002	500-20	500	+ 0 / -0.15	413	441	30	M20	362	1166332	1376275	572	750	88.5	101.5	13	508	9.5	319.3			

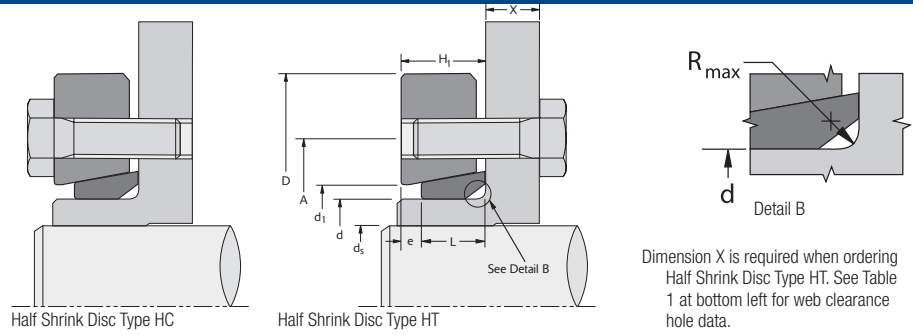
### SD30 — Split SD — Heavy Duty

Part Number	Size	SD bore (Hub OD)		Hub OD Tolerance		Shaft Diameter Range		Locking Screws		M <sub>a</sub>		M <sub>t</sub>		A (mm)	D (mm)	L (mm)	H <sub>1</sub> (mm)	e (mm)	d <sub>1</sub> (mm)	R (mm)	Ship wt (kg)
		d (mm)	T <sub>Ld</sub> (mm)	ds-MIN (mm)	ds-MAX (mm)	Qty	Size	Install Torque (Nm)	Max. Transmitted Torque												
									ds-MIN (Nm)	ds-MAX (Nm)											
HS0443	44-30	44	+ 0 / -0.05	29	36	5	M8	30	1276	2241	66	85	16.5	19.5	3	48	1.6	0.6			
HS0503	50-30	50	+ 0 / -0.05	35	41	7	M8	30	2388	3728	73	95	17.5	22.0	5	50	1.6	0.8			
HS0553	55-30	55	+ 0 / -0.05	38	45	7	M8	30	2566	4099	78	105	17.5	22.0	5	59	2.4	1.1			
HS0623	62-30	62	+ 0 / -0.05	44	51	7	M8	30	3191	4399	85	115	17.5	22.0	5	66	2.4	1.3			
HS0683	68-30	68	+ 0 / -0.05	48	56	8	M8	30	3880	5659	92	120	17.5	22.0	5	72	2.4	1.4			
HS0753	75-30	75	+ 0 / -0.05	54	61	7	M10	60	6173	8853	105	145	23.0	28.0	5	84	3.2	1.7			
HS0803	80-30	80	+ 0 / -0.05	60	66	7	M10	60	7514	9453	105	145	23.0	28.0	5	84	3.2	1.9			
HS0903	90-30	90	+ 0 / -0.10	64	74	8	M10	60	8063	12196	116	160	25.0	30.0	5	94	3.2	3.2			
HS1003	100-30	100	+ 0 / -0.10	73	82	10	M10	60	12706	17221	126	170	27.0	32.0	5	104	3.2	4.5			
HS1103	110-30	110	+ 0 / -0.10	79	90	12	M10	60	16429	22888	136	185	30.0	35.0	5	114	3.2	7.7			
HS1253	125-30	125	+ 0 / -0.10	89	102	12	M12	100	27245	38501	160	215	32.0	38.0	6	131	4.8	10.9			
HS1403	140-30	140	+ 0 / -0.10	102	115	12	M12	100	31561	42702	175	230	35.0	42.0	7	146	4.8	13.2			
HS1553	155-30	155	+ 0 / -0.10	114	127	15	M12	100	46313	57322	198	263	38.0	45.0	7	165	4.8	20.0			
HS1653	165-30	165	+ 0 / -0.10	124	135	10	M16	251	63674	79656	210	290	41.0	49.0	8	176	4.8	25.9			
HS1753	175-30	175	+ 0 / -0.10	133	143	10	M16	251	70246	84506	220	300	41.0	49.0	8	186	4.8	29.0			
HS1853	185-30	185	+ 0 / -0.10	143	152	15	M16	251	117765	136103	236	330	51.0	61.0	10	196	4.8	47.2			
HS1953	195-30	195	+ 0 / -0.10	149	160	15	M16	251	121346	143492	246	350	53.5	63.5	10	206	6.4	49.9			
HS2003	200-30	200	+ 0 / -0.10	159	164	15	M16	251	136232	147159	246	350	53.5	63.5	10	206	6.4	49.9			
HS2203	220-30	220	+ 0 / -0.10	162	180	20	M16	251	167409	211197	270	370	64.5	74.5	10	226	6.4	64.9			
HS2403	240-30	240	+ 0 / -0.10	178	197	15	M20	491	220374	273132	295	405	67.5	79.5	12	246	6.4	87.1			
HS2603	260-30	260	+ 0 / -0.13	194	213	18	M20	491	281686	356970	321	430	75.5	87.5	12	267	6.4	99.8			
HS2803	280-30	280	+ 0 / -0.13	213	229	21	M20	491	375371	451457	346	460	84.0	96.0	12	289	7.9	132.0			
HS3003	300-30	300	+ 0 / -0.13	229	246	22	M20	491	425498	507647	364	485	86.0	98.0	12	309	7.9	139.7			
HS3203	320-30	320	+ 0 / -0.13	244	262	24	M20	491	500306	580128	386	520	90.0	102.0	12	329	7.9	164.7			
HS3403	340-30	340	+ 0 / -0.13	260	278	21	M24	841	663530	783718	420	570	98.0	110.0	12	349	7.9	239.5			
HS3603	360-30	360	+ 0 / -0.13	279	295	22	M24	841	763237	871276	432	590	102.5	114.5	12	369	9.5	249.5			
HS3903	390-30	390	+ 0 / -0.13	295	319	24	M24	841	852855	1033310	468	660	106.5	118.5	12	396	9.5	349.3			
HS4203	420-30	420	+ 0 / -0.15	318	344	30	M24	841	1156452	1401741	504	690	119.5	131.5	12	427	9.5	409.1			
HS4603	460-30	460	+ 0 / -0.15	346	377	28	M27	1250	1552022	1903680	547	770	127.0	141.0	14	470	12.7	538.9			
HS5003	500-30	500	+ 0 / -0.15	378	409	32	M27	1250	1957195	2372093	600	850	138.0	152.0	14	508	12.7	748.4			

Please note not all catalog items shown are stock. Some products are make-to-order (MTO) based on annual demand. Please verify with your customer service representative for current availability of the item desired.

# B-LOC Half Shrink Discs

B-LOC  
Shrink Disc  
**Half  
Inch**



Dimension X is required when ordering Half Shrink Disc Type HT. See Table 1 at bottom left for web clearance hole data.

## SD10 — Half SD — Standard Duty

Type HC Part Number	Type HT Part Number	Size	SD bore (Hub OD)		Hub OD Tolerance		Shaft Diameter Range		Locking Screws			M <sub>a</sub> Install Torque (ft lb)	M <sub>t</sub> Max. Transmitted Torque (ft lb)		A (inch)	D (inch)	L (inch)	H <sub>1</sub> (inch)	e (inch)	d <sub>1</sub> (inch)	R (inch)	Ship wt (lb)
			d (inch)	T <sub>Ld</sub> (inch)	ds-MIN (inch)	ds-MAX (inch)	Qty	HC Size	HT Size	ds-MIN (ft lb)	ds-MAX (ft lb)											
HHC0241	HHT0241	24-10	0.945	+0/-0.002	0.625	0.774	6	M5 x 16	M5	3.6	69	139	1.417	1.97	0.374	0.453	0.080	1.023	1/16	0.3		
HHC0301	HHT0301	30-10	1.181	+0/-0.002	0.750	0.967	7	M5 x 18	M5	3.6	89	204	1.732	2.36	0.413	0.493	0.081	1.259	1/16	0.4		
HHC0361	HHT0361	36-10	1.417	+0/-0.002	0.875	1.161	5	M6 x 20	M6	8.7	158	333	2.047	2.83	0.448	0.533	0.085	1.496	1/16	0.6		
HHC0441	HHT0441	44-10	1.732	+0/-0.002	1.125	1.419	7	M6 x 20	M6	8.7	342	599	2.402	3.15	0.492	0.568	0.077	1.850	1/16	0.8		
HHC0501	HHT0501	50-10	1.969	+0/-0.002	1.375	1.612	8	M6 x 22	M6	8.7	482	783	2.756	3.54	0.531	0.608	0.077	2.086	1/16	1		
HHC0551	HHT0551	55-10	2.165	+0/-0.002	1.500	1.773	8	M6 x 25	M6	8.7	507	854	2.953	3.94	0.551	0.668	0.118	2.283	3/32	1.4		
HHC0621	HHT0621	62-10	2.441	+0/-0.002	1.750	1.999	10	M6 x 25	M6	8.7	859	1188	3.386	4.33	0.551	0.668	0.118	2.598	3/32	1.6		
HHC0681	HHT0681	68-10	2.677	+0/-0.002	1.875	2.193	10	M6 x 25	M6	8.7	880	1303	3.386	4.53	0.551	0.668	0.118	2.834	3/32	1.6		
HHC0751	HHT0751	75-10	2.953	+0/-0.002	2.125	2.418	7	M8 x 25	M8	22	1396	2029	3.937	5.43	0.689	0.807	0.118	3.110	1/8	2.6		
HHC0801	HHT0801	80-10	3.150	+0/-0.002	2.375	2.580	7	M8 x 25	M8	22	1708	2166	3.937	5.71	0.689	0.807	0.118	3.307	1/8	2.8		
HHC0901	HHT0901	90-10	3.543	+0/-0.004	2.500	2.902	10	M8 x 30	M8	22	2376	3570	4.488	6.10	0.788	0.942	0.155	3.700	1/8	4		
HHC0951	HHT0951	95-10	3.740	+0/-0.004	2.750	3.063	12	M8 x 30	M8	22	3416	4554	4.882	6.69	0.866	1.042	0.176	4.094	1/8	6		
HHC1001	HHT1001	100-10	3.937	+0/-0.004	2.875	3.224	12	M8 x 35	M8	22	3530	4793	4.882	6.69	0.866	1.042	0.176	4.094	1/8	6		
HHC1101	HHT1101	110-10	4.331	+0/-0.004	3.125	3.547	9	M10 x 40	M10	44	4507	6301	5.354	7.28	0.965	1.162	0.198	4.488	1/8	7		
HHC1251	HHT1251	125-10	4.921	+0/-0.004	3.500	4.031	12	M10 x 40	M10	44	6855	9770	6.299	8.46	1.024	1.217	0.194	5.275	1/8	11		
HHC1401	HHT1401	140-10	5.512	+0/-0.004	4.000	4.514	10	M12 x 45	M12	74	9824	13220	6.890	9.06	1.103	1.337	0.235	5.708	3/16	13		
HHC1551	HHT1551	155-10	6.102	+0/-0.004	4.500	4.998	12	M12 x 50	M12	74	13758	17025	7.559	10.36	1.181	1.417	0.236	6.496	3/16	17		
HHC1651	HHT1651	165-10	6.496	+0/-0.004	4.875	5.320	8	M16 x 55	M16	185	18869	23568	8.268	11.42	1.299	1.532	0.233	6.889	3/16	24		
HHC1751	HHT1751	175-10	6.890	+0/-0.004	5.250	5.643	8	M16 x 55	M16	185	20810	25003	8.661	11.81	1.299	1.532	0.233	7.283	3/16	25		
HHC1851	HHT1851	185-10	7.283	+0/-0.004	5.625	5.965	10	M16 x 65	M16	185	28401	32983	9.291	12.99	1.595	1.867	0.273	7.677	3/16	39		
HHC1951	HHT1951	195-10	7.677	+0/-0.004	5.875	6.288	12	M16 x 65	M16	185	35954	42463	9.685	13.78	1.595	1.867	0.273	8.110	3/16	44		
HHC2001	HHT2001	200-10	7.874	+0/-0.004	6.250	6.449	12	M16 x 65	M16	185	40337	43548	9.685	13.78	1.595	1.867	0.273	8.110	3/16	43		
HHC2201	HHT2201	220-10	8.661	+0/-0.004	6.375	7.094	15	M16 x 80	M16	185	46115	58213	10.630	14.57	2.027	2.325	0.298	8.897	1/4	57		
HHC2401	HHT2401	240-10	9.449	+0/-0.004	7.000	7.739	12	M20 x 80	M20	362	65323	80909	11.614	15.95	2.106	2.405	0.299	9.763	1/4	72		
HHC2601	HHT2601	260-10	10.236	+0/-0.004	7.625	8.383	14	M20 x 90	M20	362	81099	102632	12.638	16.93	2.323	2.640	0.318	10.551	1/4	89		
HHC2801	HHT2801	280-10	11.024	+0/-0.005	8.375	9.028	16	M20 x 100	M20	362	105291	126689	13.622	18.11	2.328	2.994	0.356	11.338	5/16	115		
HHC3001	HHT3001	300-10	11.811	+0/-0.005	9.000	9.673	18	M20 x 100	M20	362	128639	153375	14.331	19.10	2.796	3.154	0.359	12.125	5/16	133		
HHC3201	HHT3201	320-10	12.598	+0/-0.005	9.625	10.318	20	M20 x 100	M20	362	155246	179864	15.197	20.48	2.796	3.154	0.359	12.913	5/16	153		
HHC3401	HHT3401	340-10	13.386	+0/-0.005	10.250	10.963	24	M20 x 110	M20	362	196044	231196	16.063	22.44	3.032	3.464	0.432	13.700	5/16	209		
HHC3501	HHT3501	350-10	13.780	+0/-0.005	10.875	11.285	24	M20 x 110	M20	362	216343	237049	17.008	22.84	3.150	3.544	0.395	14.488	5/16	220		
HHC3601	HHT3601	360-10	14.173	+0/-0.005	11.250	11.608	24	M20 x 110	M20	362	225703	243851	17.008	23.23	3.150	3.544	0.395	14.488	5/16	225		
HHC3801	HHT3801	380-10	14.961	+0/-0.005	11.500	12.253	20	M24 x 120	M24	620	267503	311526	18.031	25.40	3.229	3.624	0.396	15.276	5/16	292		
HHC3901	HHT3901	390-10	15.354	+0/-0.005	12.250	12.575	21	M24 x 120	M24	620	316592	336924	18.425	25.99	3.327	3.722	0.396	15.629	3/8	305		
HHC4201	HHT4201	420-10	16.535	+0/-0.006	12.500	13.543	24	M24 x 130	M24	620	342747	414833	19.843	27.17	3.720	4.117	0.397	16.929	3/8	364		
HHC4401	HHT4401	440-10	17.323	+0/-0.006	13.500	14.187	24	M24 x 130	M24	620	384372	426268	20.748	29.53	3.977	4.467	0.491	17.716	3/8	467		
HHC4601	HHT4601	460-10	18.110	+0/-0.006	14.125	14.832	28	M24 x 130	M24	620	467097	525790	21.535	30.32	3.977	4.467	0.491	18.425	3/8	483		
HHC4801	HHT4801	480-10	18.898	+0/-0.006	14.750	15.477	30	M24 x 150	M24	620	523543	588179	22.441	31.50	4.292	4.786	0.495	19.291	1/2	555		
HHC5001	HHT5001	500-10	19.685	+0/-0.006	15.375	16.122	24	M27 x 150	M27	922	584795	655074	23.228	33.46	4.292	4.786	0.495	19.999	1/2	626		

### Specifications for Web Clearance Holes (diameter in inches)

Screw Size	M5	M6	M8	M10	M12	M16	M20	M24	M27
Split Shrink Disc	0.281	0.328	0.406	0.500	0.594	0.750	0.906	1.063	1.188
Half Shrink Disc HT	0.219	0.266	0.359	0.438	0.531	0.719	0.875	1.031	1.156

Table 1

#### Notes:

- Type HT: Screw length must be determined based on your X dimension. Please consult Technical Services.
- Inner rings of all shrink discs are supplied with one lengthwise slit.
- Shrink discs are available for shafts up to 40" diameter and in a variety of special designs.
- Maximum shaft sizes listed for Shrink Disc Series SD10 and SD30 reflect equal section moduli of shaft and hub (maximum shaft diameter =  $\frac{d}{1.221}$ ).
- Larger shrink discs for shafts up to 40" diameter are available on request.

### For Series SD10, SD20 and SD30

Shaft Sizes (inch)	Maximum Diametrical Clearance Between Shaft and Hub Bore	
	>	≤
1 1/8	1 1/8	0.0010
1 15/16	1 15/16	0.0015
4 3/4	4 3/4	0.0020
7	7	0.0030
10	10	0.0040
14	14	0.0050
14	14	0.0060

Please note not all catalog items shown are stock. Some products are make-to-order (MTO) based on annual demand. Please verify with your customer service representative for current availability of the item desired.

B-LOC  
Shrink Disc  
**Half  
Metric**

## SD10 — Half SD — Standard Duty

Type HC Part Number	Type HT Part Number	Size	SD bore (Hub OD)		Shaft Diameter Range		Locking Screws			M <sub>a</sub> Install Torque (Nm)	M <sub>t</sub> Max. Transmitted Torque		A (mm)	D (mm)	L (mm)	H <sub>1</sub> (mm)	e (mm)	d <sub>1</sub> (mm)	R (mm)	Ship wt (kg)
			d (mm)	T <sub>Ld</sub> (mm)	ds-MIN (mm)	ds-MAX (mm)	Qty	HC Size	HT Size		ds-MIN (Nm)	ds-MAX (Nm)								
HHC0241	HHT0241	24-10	24	+ 0 / -0.05	16	20	6	M5 x 16	M5	5	94	188	36	50	9.5	11.5	2	26	1.6	0.1
HHC0301	HHT0301	30-10	30	+ 0 / -0.05	19	25	7	M5 x 18	M5	5	121	277	44	60	10.5	12.5	2	32	1.6	0.2
HHC0361	HHT0361	36-10	36	+ 0 / -0.05	22	29	5	M6 x 20	M6	12	214	452	52	72	11.4	13.5	2	38	1.6	0.3
HHC0441	HHT0441	44-10	44	+ 0 / -0.05	29	36	7	M6 x 20	M6	12	464	812	61	80	12.5	14.5	2	47	1.6	0.4
HHC0501	HHT0501	50-10	50	+ 0 / -0.05	35	41	8	M6 x 22	M6	12	654	1062	70	90	13.5	15.5	2	53	1.6	0.5
HHC0551	HHT0551	55-10	55	+ 0 / -0.05	38	45	8	M6 x 25	M6	12	687	1158	75	100	14.0	17.0	3	58	2.4	0.6
HHC0621	HHT0621	62-10	62	+ 0 / -0.05	44	51	10	M6 x 25	M6	12	1165	1611	86	110	14.0	17.0	3	66	2.4	0.7
HHC0681	HHT0681	68-10	68	+ 0 / -0.05	48	56	10	M6 x 25	M6	12	1193	1767	86	115	14.0	17.0	3	72	2.4	0.7
HHC0751	HHT0751	75-10	75	+ 0 / -0.05	54	61	7	M8 x 25	M8	30	1893	2751	100	138	17.5	20.5	3	79	3.2	1.2
HHC0801	HHT0801	80-10	80	+ 0 / -0.05	60	66	7	M8 x 25	M8	30	2316	2937	100	145	17.5	20.5	3	84	3.2	1.3
HHC0901	HHT0901	90-10	90	+ 0 / -0.10	64	74	10	M8 x 30	M8	30	3222	4841	114	155	20.0	24.0	4	94	3.2	1.8
HHC0951	HHT0951	95-10	95	+ 0 / -0.10	70	78	12	M8 x 30	M8	30	4632	6175	124	170	22.0	26.5	4	104	3.2	2.7
HHC1001	HHT1001	100-10	100	+ 0 / -0.10	73	82	12	M8 x 35	M8	30	4787	6499	124	170	22.0	26.5	4	104	3.2	2.7
HHC1101	HHT1101	110-10	110	+ 0 / -0.10	79	90	9	M10 x 40	M10	60	6111	8544	136	185	24.5	29.5	5	114	3.2	3.2
HHC1251	HHT1251	125-10	125	+ 0 / -0.10	89	102	12	M10 x 40	M10	60	9295	13248	160	215	26.0	31.0	5	134	3.2	5.0
HHC1401	HHT1401	140-10	140	+ 0 / -0.10	102	115	10	M12 x 45	M12	100	13321	17926	175	230	28.0	34.0	6	145	4.8	5.9
HHC1551	HHT1551	155-10	155	+ 0 / -0.10	114	127	12	M12 x 50	M12	100	18656	23086	192	263	30.0	36.0	6	165	4.8	7.7
HHC1651	HHT1651	165-10	165	+ 0 / -0.10	124	135	8	M16 x 55	M16	251	25586	31958	210	290	33.0	39.0	6	175	4.8	10.9
HHC1751	HHT1751	175-10	175	+ 0 / -0.10	133	143	8	M16 x 55	M16	251	28218	33904	220	300	33.0	39.0	6	185	4.8	11.3
HHC1851	HHT1851	185-10	185	+ 0 / -0.10	143	152	10	M16 x 65	M16	251	38512	44725	236	330	40.5	47.5	7	195	4.8	17.7
HHC1951	HHT1951	195-10	195	+ 0 / -0.10	149	160	12	M16 x 65	M16	251	48754	57580	246	350	40.5	47.5	7	206	4.8	20.0
HHC2001	HHT2001	200-10	200	+ 0 / -0.10	159	164	12	M16 x 65	M16	251	54697	59051	246	350	40.5	47.5	7	206	4.8	19.5
HHC2201	HHT2201	220-10	220	+ 0 / -0.10	162	180	15	M16 x 80	M16	251	62532	78937	270	370	51.5	59.0	8	226	6.4	25.9
HHC2401	HHT2401	240-10	240	+ 0 / -0.10	178	197	12	M20 x 80	M20	491	88578	109713	295	405	53.5	61.0	8	248	6.4	32.7
HHC2601	HHT2601	260-10	260	+ 0 / -0.10	194	213	14	M20 x 90	M20	491	109970	139169	321	430	59.0	67.0	8	268	6.4	40.4
HHC2801	HHT2801	280-10	280	+ 0 / -0.13	213	229	16	M20 x 100	M20	491	142775	171790	346	460	67.0	76.0	9	288	7.9	52.2
HHC3001	HHT3001	300-10	300	+ 0 / -0.13	229	246	18	M20 x 100	M20	491	174434	207977	364	485	71.0	80.0	9	308	7.9	60.3
HHC3201	HHT3201	320-10	320	+ 0 / -0.13	244	262	20	M20 x 100	M20	491	210514	243896	386	520	71.0	80.0	9	328	7.9	69.4
HHC3401	HHT3401	340-10	340	+ 0 / -0.13	260	278	24	M20 x 110	M20	491	265836	313502	408	570	77.0	88.0	11	348	7.9	94.8
HHC3501	HHT3501	350-10	350	+ 0 / -0.13	276	287	24	M20 x 110	M20	491	293361	321438	432	580	80.0	90.0	10	368	7.9	99.8
HHC3601	HHT3601	360-10	360	+ 0 / -0.13	286	295	24	M20 x 110	M20	491	306053	330662	432	590	80.0	90.0	10	368	7.9	102.1
HHC3801	HHT3801	380-10	380	+ 0 / -0.13	292	311	20	M24 x 120	M24	841	362734	422429	458	645	82.0	92.0	10	388	7.9	132.4
HHC3901	HHT3901	390-10	390	+ 0 / -0.13	311	319	21	M24 x 120	M24	841	429299	456869	468	660	84.5	94.5	10	397	9.5	138.3
HHC4201	HHT4201	420-10	420	+ 0 / -0.15	318	344	24	M24 x 130	M24	841	464765	562514	504	690	94.5	104.5	10	430	9.5	165.1
HHC4401	HHT4401	440-10	440	+ 0 / -0.15	343	360	24	M24 x 130	M24	841	521208	578019	527	750	101.0	113.5	12	450	9.5	211.8
HHC4601	HHT4601	460-10	460	+ 0 / -0.15	359	377	28	M24 x 130	M24	841	633384	712971	547	770	101.0	113.5	12	468	9.5	219.1
HHC4801	HHT4801	480-10	480	+ 0 / -0.15	375	393	30	M24 x 150	M24	841	709924	797571	570	800	109.0	121.5	13	490	12.7	251.7
HHC5001	HHT5001	500-10	500	+ 0 / -0.15	391	409	24	M27 x 150	M27	1250	792982	888280	590	850	109.0	121.5	13	508	12.7	283.9

## Specifications for Web Clearance Holes (diameter in mm)

Screw Size	M5	M6	M8	M10	M12	M16	M20	M24	M27
Split Shrink Disc	7	8	10	13	15	19	23	27	30
Half Shrink Disc HT	5.5	7	9	11	13.5	18	22	26	30

Table 1

## Notes:

- Type HT: Screw length must be determined based on your X dimension. Please consult Technical Services.
- Inner rings of all shrink discs are supplied with one lengthwise slit.
- Shrink discs are available for shafts up to 40" diameter and in a variety of special designs.
- Maximum shaft sizes listed for Shrink Disc Series SD10 and SD30 reflect equal section moduli of shaft and hub (maximum shaft diameter =  $\frac{d}{1.221}$ ).
- Larger shrink discs for shafts up to 40" diameter are available on request.

## For Series SD10, SD20 and SD30

Shaft Sizes (mm)		Maximum Diametrical Clearance Between Shaft and Hub Bore
>	≤	
	30	0.025
30	50	0.038
50	120	0.051
120	180	0.076
180	255	0.102
255	355	0.127
355		0.152

Please note not all catalog items shown are stock. Some products are make-to-order (MTO) based on annual demand. Please verify with your customer service representative for current availability of the item desired.

# B-LOC Half Shrink Discs

B-LOC  
Shrink Disc

# Half Inch

SD20 — Half SD — Light Duty

Type HC Part Number	Type HT Part Number	Size	SD bore (Hub OD)		Shaft Diameter Range		Locking Screws			Ma Install Torque (ft lb)	Mt Max. Transmitted Torque		A (inch)	D (inch)	L (inch)	Hi (inch)	e (inch)	d1 (inch)	R (inch)	Ship wt (lb)
			d	Tld	ds-MIN	ds-MAX	Qty	HC Size	HT Size		ds-MIN	ds-MAX								
			(inch)	(inch)	(inch)	(inch)					(ft lb)	(ft lb)								
HHC1252	HHT1252	125-20	4.921	+0/-0.004	3.625	4.125	8	M10 x 40	M10	44	4690	6672	6.220	7.28	0.965	1.202	0.238	5.118	1/8	7
HHC1402	HHT1402	140-20	5.512	+0/-0.004	4.250	5.00	9	M10 x 40	M10	44	6846	10164	6.889	8.67	0.965	1.202	0.238	5.669	1/8	10
HHC1552	HHT1552	155-20	6.102	+0/-0.004	5.000	5.500	11	M10 x 40	M10	44	10572	13724	7.559	9.65	0.965	1.202	0.238	6.259	1/8	12
HHC1652	HHT1652	165-20	6.496	+0/-0.004	5.375	5.750	10	M12 x 50	M12	74	15326	18339	8.267	10.24	1.103	1.417	0.315	6.653	3/16	16
HHC1752	HHT1752	175-20	6.890	+0/-0.004	5.625	6.125	11	M12 x 50	M12	74	17470	21794	8.661	10.83	1.103	1.417	0.315	7.047	3/16	17
HHC1852	HHT1852	185-20	7.283	+0/-0.004	6.000	6.500	12	M12 x 50	M12	74	20822	25518	8.858	11.62	1.103	1.417	0.315	7.440	3/16	20
HHC1952	HHT1952	195-20	7.677	+0/-0.004	6.500	7.000	15	M12 x 60	M12	74	29490	35537	9.330	12.40	1.299	1.617	0.318	7.834	3/16	27
HHC2202	HHT2202	220-20	8.661	+0/-0.004	7.000	7.875	10	M16 x 70	M16	185	38227	50448	10.433	13.59	1.496	1.852	0.356	8.818	3/16	37
HHC2402	HHT2402	240-20	9.449	+0/-0.004	7.875	8.500	12	M16 x 70	M16	185	53506	64932	11.417	14.57	1.594	1.950	0.356	9.606	1/4	42
HHC2602	HHT2602	260-20	10.236	+0/-0.004	8.625	9.250	14	M16 x 70	M16	185	69970	83309	12.204	15.55	1.712	2.110	0.398	10.433	1/4	51
HHC2802	HHT2802	280-20	11.024	+0/-0.005	9.000	9.875	16	M16 x 75	M16	185	79362	100198	13.110	16.74	1.949	2.345	0.397	11.220	1/4	67
HHC3002	HHT3002	300-20	11.811	+0/-0.005	9.875	10.625	18	M16 x 75	M16	185	114968	135644	14.094	18.11	1.949	2.345	0.397	12.007	1/4	79
HHC3202	HHT3202	320-20	12.598	+0/-0.005	10.500	11.375	20	M16 x 75	M16	185	119470	146023	14.881	19.49	1.949	2.385	0.437	12.795	1/4	96
HHC3402	HHT3402	340-20	13.386	+0/-0.005	11.375	12.000	21	M16 x 75	M16	185	140500	160429	15.826	21.07	1.949	2.385	0.437	13.582	1/4	114
HHC3602	HHT3602	360-20	14.173	+0/-0.005	11.875	12.625	16	M20 x 90	M20	362	170938	199015	16.653	21.85	2.363	2.799	0.437	14.370	5/16	137
HHC3802	HHT3802	380-20	14.961	+0/-0.005	12.500	13.000	18	M20 x 100	M20	362	201670	222315	17.401	23.03	2.599	3.069	0.471	15.236	5/16	168
HHC3902	HHT3902	390-20	15.354	+0/-0.005	12.625	13.75	20	M20 x 100	M20	362	223086	274543	17.795	23.43	2.599	3.074	0.476	15.629	5/16	172
HHC4202	HHT4202	420-20	16.535	+0/-0.006	13.750	14.625	22	M20 x 100	M20	362	272248	312909	19.094	24.81	2.756	3.229	0.473	16.810	5/16	199
HHC4602	HHT4602	460-20	18.110	+0/-0.006	14.625	16.375	28	M20 x 110	M20	362	352227	463928	20.747	26.97	3.090	3.602	0.512	18.425	3/8	257
HHC5002	HHT5002	500-20	19.685	+0/-0.006	16.250	17.375	30	M20 x 120	M20	362	430064	507476	22.519	29.53	3.484	3.997	0.513	19.999	3/8	350

B-LOC  
Shrink Disc

# Half Metric

SD20 — Half SD — Light Duty

Type HC Part Number	Type HT Part Number	Size	SD bore (Hub OD)		Shaft Diameter Range		Locking Screws			Ma Install Torque (Nm)	Mt Max. Transmitted Torque		A (mm)	D (mm)	L (mm)	Hi (mm)	e (mm)	d1 (mm)	R (mm)	Ship wt (kg)
			d	Tld	ds-MIN	ds-MAX	Qty	HC Size	HT Size		ds-MIN	ds-MAX								
			(mm)	(mm)	(mm)	(mm)					(Nm)	(Nm)								
HHC1252	HHT1252	125-20	125	+0/-0.10	92	105	8	M10 x 40	M10	60	6360	9047	158	185	24.5	30.5	6	130	3.2	3.2
HHC1402	HHT1402	140-20	140	+0/-0.10	108	127	9	M10 x 40	M10	60	9283	13782	175	220	24.5	30.5	6	144	3.2	4.5
HHC1552	HHT1552	155-20	155	+0/-0.10	127	140	11	M10 x 40	M10	60	14336	18610	192	245	24.5	30.5	6	159	3.2	5.4
HHC1652	HHT1652	165-20	165	+0/-0.10	137	146	10	M12 x 50	M12	100	20782	24868	210	260	28.0	36.0	8	169	4.8	7.3
HHC1752	HHT1752	175-20	175	+0/-0.10	143	156	11	M12 x 50	M12	100	23689	29553	220	275	28.0	36.0	8	179	4.8	7.7
HHC1852	HHT1852	185-20	185	+0/-0.10	152	165	12	M12 x 50	M12	100	28235	34602	225	295	28.0	36.0	8	189	4.8	9.1
HHC1952	HHT1952	195-20	195	+0/-0.10	165	178	15	M12 x 60	M12	100	39988	48188	237	315	33.0	41.0	8	199	4.8	12.2
HHC2202	HHT2202	220-20	220	+0/-0.10	178	200	10	M16 x 70	M16	251	51836	68407	265	345	38.0	47.0	9	224	4.8	16.8
HHC2402	HHT2402	240-20	240	+0/-0.10	200	216	12	M16 x 70	M16	251	72554	88048	290	370	40.5	49.5	9	244	6.4	19.1
HHC2602	HHT2602	260-20	260	+0/-0.10	219	235	14	M16 x 70	M16	251	94879	112967	310	395	43.5	53.5	10	265	6.4	23.1
HHC2802	HHT2802	280-20	280	+0/-0.13	229	251	16	M16 x 75	M16	251	107615	135868	333	425	49.5	59.5	10	285	6.4	30.4
HHC3002	HHT3002	300-20	300	+0/-0.13	251	270	18	M16 x 75	M16	251	155897	183933	358	460	49.5	59.5	10	305	6.4	35.8
HHC3202	HHT3202	320-20	320	+0/-0.13	267	289	20	M16 x 75	M16	251	162001	198007	378	495	49.5	60.5	11	325	6.4	43.5
HHC3402	HHT3402	340-20	340	+0/-0.13	289	305	21	M16 x 75	M16	251	190518	217542	402	535	49.5	60.5	11	345	6.4	51.7
HHC3602	HHT3602	360-20	360	+0/-0.13	302	321	16	M20 x 90	M20	491	231792	269864	423	555	60.0	71.0	11	365	7.9	62.1
HHC3802	HHT3802	380-20	380	+0/-0.13	318	330	18	M20 x 100	M20	491	273465	301459	442	585	66.0	78.0	12	387	7.9	76.2
HHC3902	HHT3902	390-20	390	+0/-0.13	321	349	20	M20 x 100	M20	491	302505	372280	452	595	66.0	78.0	12	397	7.9	78.0
HHC4202	HHT4202	420-20	420	+0/-0.15	349	371	22	M20 x 100	M20	491	369168	424305	485	630	70.0	82.0	12	427	7.9	90.3
HHC4602	HHT4602	460-20	460	+0/-0.15	371	416	28	M20 x 110	M20	491	477620	629086	527	685	78.5	91.5	13	468	9.5	116.6
HHC5002	HHT5002	500-20	500	+0/-0.15	413	441	30	M20 x 120	M20	491	583167	688137	572	750	88.5	101.5	13	508	9.5	158.8

Please note not all catalog items shown are stock. Some products are make-to-order (MTO) based on annual demand. Please verify with your customer service representative for current availability of the item desired.

B-LOC  
Shrink Disc  
**Half  
Inch**

**SD30 — Half SD — Heavy Duty**

Type HC Part Number	Type HT Part Number	Size	SD bore (Hub OD)		Shaft Diameter Range		Locking Screws			Ma Install Torque (ft lb)	Mt Max. Transmitted Torque		A (inch)	D (inch)	L (inch)	H <sub>1</sub> (inch)	e (inch)	d <sub>1</sub> (inch)	R (inch)	Ship wt (lb)
			d (inch)	T <sub>L</sub> d (inch)	ds-MIN (inch)	ds-MAX (inch)	Qty	HC Size	HT Size		ds-MIN (ft lb)	ds-MAX (ft lb)								
HHC0443	HHT0443	44-30	1.732	+ 0 / -0.002	1.125	1.419	5	M8 x 30	M8	22	471	827	2.598	3.35	0.649	0.768	0.119	1.890	1/16	1.2
HHC0503	HHT0503	50-30	1.969	+ 0 / -0.002	1.375	1.612	7	M8 x 35	M8	22	881	1375	2.874	3.74	0.689	0.868	0.180	1.984	1/16	1.8
HHC0553	HHT0553	55-30	2.165	+ 0 / -0.002	1.500	1.773	7	M8 x 35	M8	22	946	1512	3.071	4.13	0.689	0.868	0.180	2.323	3/32	2.1
HHC0623	HHT0623	62-30	2.441	+ 0 / -0.002	1.750	1.999	7	M8 x 35	M8	22	1177	1622	3.346	4.53	0.689	0.868	0.180	2.598	3/32	2.3
HHC0683	HHT0683	68-30	2.677	+ 0 / -0.002	1.875	2.193	8	M8 x 35	M8	22	1431	2087	3.622	4.72	0.689	0.868	0.180	2.835	3/32	2.5
HHC0753	HHT0753	75-30	2.953	+ 0 / -0.002	2.125	2.418	7	M10 x 40	M10	44	2276	3265	4.134	5.71	0.906	1.102	0.197	3.307	1/8	4.6
HHC0803	HHT0803	80-30	3.150	+ 0 / -0.002	2.375	2.580	7	M10 x 40	M10	44	2771	3486	4.134	5.71	0.906	1.102	0.197	3.307	1/8	4.4
HHC0903	HHT0903	90-30	3.543	+ 0 / -0.004	2.500	2.902	8	M10 x 40	M10	44	2973	4497	4.567	6.30	0.985	1.182	0.198	3.701	1/8	6
HHC1003	HHT1003	100-30	3.937	+ 0 / -0.004	2.875	3.224	10	M10 x 45	M10	44	4685	6350	4.961	6.69	1.063	1.262	0.199	4.094	1/8	7
HHC1103	HHT1103	110-30	4.331	+ 0 / -0.004	3.125	3.547	12	M10 x 45	M10	44	6058	8440	5.354	7.28	1.182	1.377	0.196	4.482	1/8	9
HHC1253	HHT1253	125-30	4.921	+ 0 / -0.004	3.500	4.031	12	M12 x 50	M12	74	10046	14197	6.299	8.47	1.260	1.497	0.237	5.157	3/16	13
HHC1403	HHT1403	140-30	5.512	+ 0 / -0.004	4.000	4.514	12	M12 x 60	M12	74	11638	15746	6.889	9.06	1.378	1.657	0.279	5.744	3/16	16
HHC1553	HHT1553	155-30	6.102	+ 0 / -0.004	4.500	4.998	15	M12 x 60	M12	74	17077	21137	7.795	10.36	1.496	1.772	0.276	6.496	3/16	23
HHC1653	HHT1653	165-30	6.496	+ 0 / -0.004	4.875	5.320	10	M16 x 70	M16	185	23479	29372	8.267	11.42	1.614	1.932	0.318	6.940	3/16	32
HHC1753	HHT1753	175-30	6.890	+ 0 / -0.004	5.250	5.643	10	M16 x 70	M16	185	25902	31160	8.661	11.82	1.614	1.932	0.318	7.322	3/16	33
HHC1853	HHT1853	185-30	7.283	+ 0 / -0.004	5.625	5.965	15	M16 x 80	M16	185	43424	50186	9.291	12.99	2.008	2.402	0.394	7.704	3/16	53
HHC1953	HHT1953	195-30	7.677	+ 0 / -0.004	5.875	6.288	15	M16 x 80	M16	185	44744	52910	9.685	13.78	2.106	2.500	0.394	8.102	1/4	60
HHC2003	HHT2003	200-30	7.874	+ 0 / -0.004	6.250	6.449	15	M16 x 80	M16	185	50233	54262	9.685	13.78	2.106	2.500	0.394	8.102	1/4	59
HHC2203	HHT2203	220-30	8.661	+ 0 / -0.004	6.375	7.094	20	M16 x 90	M16	185	61729	77875	10.629	14.57	2.539	2.935	0.396	8.901	1/4	76
HHC2403	HHT2403	240-30	9.449	+ 0 / -0.004	7.000	7.739	15	M20 x 100	M20	362	81259	100713	11.614	15.95	2.657	3.130	0.473	9.692	1/4	99
HHC2603	HHT2603	260-30	10.236	+ 0 / -0.005	7.625	8.383	18	M20 x 110	M20	362	103867	131626	12.637	16.93	2.972	3.445	0.473	10.511	1/4	121
HHC2803	HHT2803	280-30	11.024	+ 0 / -0.005	8.375	9.028	21	M20 x 120	M20	362	138411	166467	13.622	18.11	3.307	3.779	0.472	11.370	5/16	149
HHC3003	HHT3003	300-30	11.811	+ 0 / -0.005	9.000	9.673	22	M20 x 120	M20	362	156895	187186	14.330	19.10	3.386	3.859	0.473	12.177	5/16	165
HHC3203	HHT3203	320-30	12.598	+ 0 / -0.005	9.625	10.318	24	M20 x 120	M20	362	184479	213912	15.196	20.48	3.544	4.019	0.476	12.964	5/16	200
HHC3403	HHT3403	340-30	13.386	+ 0 / -0.005	10.250	10.963	21	M24 x 130	M24	620	244665	288982	16.535	22.44	3.859	4.334	0.476	13.724	5/16	272
HHC3603	HHT3603	360-30	14.173	+ 0 / -0.005	11.000	11.608	22	M24 x 140	M24	620	281430	321267	17.007	23.23	4.035	4.512	0.477	14.515	3/8	286
HHC3903	HHT3903	390-30	15.354	+ 0 / -0.005	11.625	12.575	24	M24 x 140	M24	620	314475	381014	18.425	25.99	4.193	4.667	0.475	15.609	3/8	384
HHC4203	HHT4203	420-30	16.535	+ 0 / -0.006	12.500	13.543	30	M24 x 160	M24	620	426421	516866	19.842	27.17	4.705	5.177	0.472	16.811	3/8	462
HHC4603	HHT4603	460-30	18.110	+ 0 / -0.006	13.625	14.832	28	M27 x 170	M27	922	572280	701947	21.535	30.32	5.000	5.556	0.556	18.503	1/2	624
HHC5003	HHT5003	500-30	19.685	+ 0 / -0.006	14.875	16.122	32	M27 x 180	M27	922	721680	874666	23.622	33.47	5.434	5.986	0.552	19.999	1/2	838

Please note not all catalog items shown are stock. Some products are make-to-order (MTO) based on annual demand. Please verify with your customer service representative for current availability of the item desired.

B-LOC  
Shrink Disc  
**Half**  
Metric

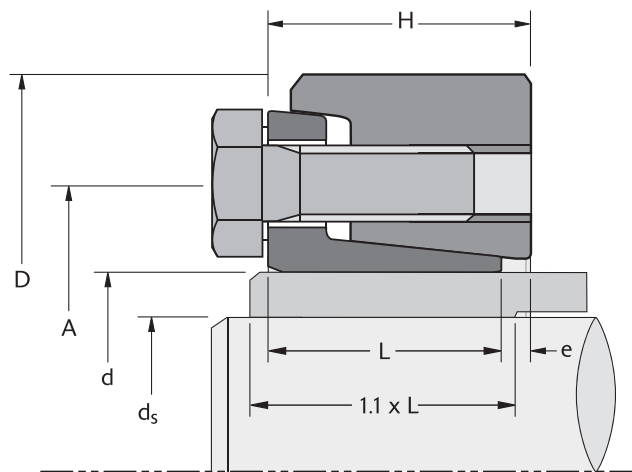
## SD30 — Half SD — Heavy Duty

Type HC Part Number	Type HT Part Number	Size	SD bore (Hub OD)	Hub OD Tolerance	Shaft Diameter Range		Locking Screws			M <sub>a</sub>	M <sub>t</sub>		A (mm)	D (mm)	L (mm)	H <sub>1</sub> (mm)	e (mm)	d <sub>1</sub> (mm)	R (mm)	Ship wt (kg)
			d (mm)	T <sub>L</sub> d (mm)	ds-MIN (mm)	ds-MAX (mm)	Qty	HC Size	HT Size	Install Torque (Nm)	Max. Transmitted Torque									
										ds-MIN (Nm)	ds-MAX (Nm)									
HHC0443	HHT0443	44-30	44	+0/-0.05	29	36	5	M8 x 30	M8	30	639	1121	66	85	16.5	19.5	3	48	1.6	0.5
HHC0503	HHT0503	50-30	50	+0/-0.05	35	41	7	M8 x 35	M8	30	1195	1865	73	95	17.5	22.0	5	50	1.6	0.8
HHC0553	HHT0553	55-30	55	+0/-0.05	38	45	7	M8 x 35	M8	30	1283	2050	78	105	17.5	22.0	5	59	2.4	1.0
HHC0623	HHT0623	62-30	62	+0/-0.05	44	51	7	M8 x 35	M8	30	1596	2199	85	115	17.5	22.0	5	66	2.4	1.0
HHC0683	HHT0683	68-30	68	+0/-0.05	48	56	8	M8 x 35	M8	30	1940	2830	92	120	17.5	22.0	5	72	2.4	1.1
HHC0753	HHT0753	75-30	75	+0/-0.05	54	61	7	M10 x 40	M10	60	3086	4427	105	145	23.0	28.0	5	84	3.2	2.1
HHC0803	HHT0803	80-30	80	+0/-0.05	60	66	7	M10 x 40	M10	60	3757	4727	105	145	23.0	28.0	5	84	3.2	2.0
HHC0903	HHT0903	90-30	90	+0/-0.10	64	74	8	M10 x 40	M10	60	4031	6098	116	160	25.0	30.0	5	94	3.2	2.7
HHC1003	HHT1003	100-30	100	+0/-0.10	73	82	10	M10 x 45	M10	60	6353	8611	126	170	27.0	32.0	5	104	3.2	3.2
HHC1103	HHT1103	110-30	110	+0/-0.10	79	90	12	M10 x 45	M10	60	8215	11445	136	185	30.0	35.0	5	114	3.2	4.1
HHC1253	HHT1253	125-30	125	+0/-0.10	89	102	12	M12 x 50	M12	100	13622	19251	160	215	32.0	38.0	6	131	4.8	5.9
HHC1403	HHT1403	140-30	140	+0/-0.10	102	115	12	M12 x 60	M12	100	15781	21352	175	230	35.0	42.0	7	146	4.8	7.3
HHC1553	HHT1553	155-30	155	+0/-0.10	114	127	15	M12 x 60	M12	100	23156	28662	198	263	38.0	45.0	7	165	4.8	10.4
HHC1653	HHT1653	165-30	165	+0/-0.10	124	135	10	M16 x 70	M16	251	31838	39828	210	290	41.0	49.0	8	176	4.8	14.5
HHC1753	HHT1753	175-30	175	+0/-0.10	133	143	10	M16 x 70	M16	251	35123	42253	220	300	41.0	49.0	8	186	4.8	15.0
HHC1853	HHT1853	185-30	185	+0/-0.10	143	152	15	M16 x 80	M16	251	58883	68052	236	330	51.0	61.0	10	196	4.8	24.0
HHC1953	HHT1953	195-30	195	+0/-0.10	149	160	15	M16 x 80	M16	251	60673	71746	246	350	53.5	63.5	10	206	6.4	27.2
HHC2003	HHT2003	200-30	200	+0/-0.10	159	164	15	M16 x 80	M16	251	68116	73579	246	350	53.5	63.5	10	206	6.4	26.8
HHC2203	HHT2203	220-30	220	+0/-0.10	162	180	20	M16 x 90	M16	251	83705	105599	270	370	64.5	74.5	10	226	6.4	34.5
HHC2403	HHT2403	240-30	240	+0/-0.10	178	197	15	M20 x 100	M20	491	110187	136567	295	405	67.5	79.5	12	246	6.4	44.9
HHC2603	HHT2603	260-30	260	+0/-0.13	194	213	18	M20 x 110	M20	491	140844	178485	321	430	75.5	87.5	12	267	6.4	54.9
HHC2803	HHT2803	280-30	280	+0/-0.13	213	229	21	M20 x 120	M20	491	187685	225729	346	460	84.0	96.0	12	289	7.9	67.6
HHC3003	HHT3003	300-30	300	+0/-0.13	229	246	22	M20 x 120	M20	491	212750	253824	364	485	86.0	98.0	12	309	7.9	74.8
HHC3203	HHT3203	320-30	320	+0/-0.13	244	262	24	M20 x 120	M20	491	250154	290065	386	520	90.0	102.0	12	329	7.9	90.7
HHC3403	HHT3403	340-30	340	+0/-0.13	260	278	21	M24 x 130	M24	841	331766	391860	420	570	98.0	110.0	12	349	7.9	123.4
HHC3603	HHT3603	360-30	360	+0/-0.13	279	295	22	M24 x 140	M24	841	381619	435638	432	590	102.5	114.5	12	369	9.5	129.7
HHC3903	HHT3903	390-30	390	+0/-0.13	295	319	24	M24 x 140	M24	841	426428	516655	468	660	106.5	118.5	12	396	9.5	174.2
HHC4203	HHT4203	420-30	420	+0/-0.15	318	344	30	M24 x 160	M24	841	578227	700870	504	690	119.5	131.5	12	427	9.5	209.6
HHC4603	HHT4603	460-30	460	+0/-0.15	346	377	28	M27 x 170	M27	1250	776012	951840	547	770	127.0	141.0	14	470	12.7	283.0
HHC5003	HHT5003	500-30	500	+0/-0.15	378	409	32	M27 x 180	M27	1250	978598	1186047	600	850	138.0	152.0	14	508	12.7	380.1

Please note not all catalog items shown are stock. Some products are make-to-order (MTO) based on annual demand. Please verify with your customer service representative for current availability of the item desired.

We also offer SD40 Single Taper Shrink Discs as an alternative to SD10, SD20 & SD30 Double Taper Shrink Discs. The SD40 units have the following attributes:

- External locking device
- Simpler two piece design
- Integrated removal holes
- Provides extremely concentric and well-balanced mechanical interference fit



## The advantages of the SD40 over the SD10, SD20 and SD30 include:

- No torque wrench needed.\* Simply tighten the screws in clockwise sequence, using several passes, until the front faces of the flange and of the outer ring are aligned
- Save up to 80% of mounting time if using a powered tool
- High transmissible torque
- Aligning the two flanges (flush mounted) ensures concentricity, reducing the need for dynamic balancing

**Note:** Dynamic fit pressures vary between Single Taper and Double Taper shrink discs, as this is based on effective contact length. This should be taken into consideration.

\* A torque wrench is recommended for best performance.

For assistance or more information on B-LOC Single Taper Shrink Discs, contact Fenner Industrial Motion Technical Services group at [AE@fenner.com](mailto:AE@fenner.com).

# B-LOC Single Taper Shrink Discs

B-LOC  
Shrink Disc  
**SD40**  
Inch



Metric hex head locking screws  
ISO 4017 grade 12.9  
(See  $M_A$  for install torque.)

Shaft Sizes (inch)		Maximum Diametrical Clearance Between Shaft and Hub Bore
>	≤	
1.220	1.969	0.0013
2.008	3.150	0.0019
3.189	4.724	0.0027
4.764	7.087	0.0031
7.126	9.843	0.0035
9.882	12.402	0.0040
12.441	15.748	0.0044
15.787	19.685	0.0048

## SD40 — Single Taper — Standard Duty

Part Number	Size	SD bore (Hub OD)	Hub OD Tolerance	Shaft Diameter Range		Locking Screws		$M_A$	$M_t$		A (inch)	D (inch)	L (inch)	H (inch)	e (inch)	Ship wt (lb)
		d (inch)	T <sub>L</sub> d (inch)	ds-MIN (inch)	ds-MAX (inch)	Qty	Size	Install Torque (ft lb)	Max. Transmitted Torque							
									ds-MIN (ft lb)	ds-MAX (ft lb)						
H0504	50-40	1.969	+0/-0.0015	1.496	1.654	7	M8 x 20	26	1136	1571	2.677	3.543	0.906	1.024	0.118	1.8
H0554	55-40	2.165	+0/-0.0018	1.654	1.890	8	M8 x 20	26	1497	2264	2.835	3.937	1.024	1.142	0.118	2.6
H0624	62-40	2.441	+0/-0.0018	1.890	2.047	8	M8 x 20	26	1763	2117	3.150	4.331	1.024	1.142	0.118	3.1
H0684	68-40	2.677	+0/-0.0018	1.969	2.362	9	M8 x 20	26	1696	3171	3.386	4.528	1.024	1.142	0.118	3.1
H0754	75-40	2.953	+0/-0.0018	2.165	2.559	5	M10 x 25	52	2611	4417	3.937	5.433	1.063	1.220	0.157	5.1
H0804	80-40	3.150	+0/-0.0018	2.362	2.756	5	M10 x 25	52	3001	4853	4.016	5.709	1.063	1.220	0.157	5.5
H0904	90-40	3.543	+0/-0.0021	2.559	2.953	7	M10 x 25	52	4425	6770	4.488	6.102	1.339	1.496	0.157	7.5
H1004	100-40	3.937	+0/-0.0021	2.756	3.150	9	M10 x 25	52	5996	8776	4.882	6.693	1.535	1.693	0.157	10.4
H1104	110-40	4.331	+0/-0.0021	2.953	3.346	8	M12 x 30	89	8407	11136	5.354	7.283	1.732	1.929	0.197	13.7
H1154	115-40	4.528	+0/-0.0021	3.150	3.543	9	M12 x 30	89	10546	13717	5.787	7.756	1.831	2.087	0.256	16.8
H1204	120-40	4.724	+0/-0.0021	3.346	3.740	9	M12 x 30	89	10619	14823	5.787	7.756	1.831	2.087	0.256	16.1
H1254	125-40	4.921	+0/-0.0025	3.346	3.740	10	M12 x 30	89	11283	15634	6.299	8.465	1.890	2.087	0.197	20.3
H1304	130-40	5.118	+0/-0.0025	3.346	3.740	10	M12 x 30	89	10398	14454	6.299	8.465	1.890	2.087	0.197	19.4
H1354	135-40	5.315	+0/-0.0025	3.543	3.937	8	M14 x 40	142	12316	16888	6.496	9.055	2.047	2.283	0.236	24
H1404	140-40	5.512	+0/-0.0025	3.740	4.134	8	M14 x 40	142	13496	18142	6.772	9.055	2.047	2.283	0.236	24
H1554	155-40	6.102	+0/-0.0025	4.134	4.528	10	M14 x 40	142	19543	25147	7.480	10.354	2.205	2.441	0.236	35
H1654	165-40	6.496	+0/-0.0025	4.528	4.921	9	M16 x 50	218	28909	35398	8.031	11.417	2.402	2.677	0.276	49
H1754	175-40	6.890	+0/-0.0025	4.921	5.315	10	M16 x 50	218	36357	44617	8.465	11.811	2.362	2.677	0.315	51
H1804	180-40	7.087	+0/-0.0028	5.315	5.709	12	M16 x 50	218	50590	61283	8.858	12.598	3.031	3.346	0.315	75
H1854	185-40	7.283	+0/-0.0028	5.315	5.709	12	M16 x 50	218	48304	58555	8.858	12.598	3.031	3.346	0.315	73
H2004	200-40	7.874	+0/-0.0028	5.906	6.299	14	M16 x 50	218	67478	79646	9.449	13.386	3.031	3.346	0.315	82
H2204	220-40	8.661	+0/-0.0028	6.299	6.693	12	M20 x 55	420	91445	106932	10.630	14.567	3.701	4.055	0.354	117
H2404	240-40	9.449	+0/-0.0028	6.693	7.480	14	M20 x 55	420	111357	144543	11.654	15.945	3.819	4.213	0.394	146
H2604	260-40	10.236	+0/-0.0032	7.480	8.268	16	M20 x 55	420	146755	188791	12.520	16.929	4.291	4.685	0.394	179
H2804	280-40	11.024	+0/-0.0032	8.268	9.055	18	M20 x 55	420	190265	238938	13.386	18.110	4.803	5.197	0.394	229
H3004	300-40	11.811	+0/-0.0032	9.055	9.843	15	M24 x 65	723	262537	321534	14.173	19.094	5.118	5.512	0.394	265
H3204	320-40	12.598	+0/-0.0035	9.449	10.236	15	M24 x 65	723	264749	319322	14.961	20.472	5.118	5.512	0.394	306
H3404	340-40	13.386	+0/-0.0035	9.843	10.630	18	M24 x 70	723	359145	427729	15.827	22.441	5.630	6.102	0.472	421
H3504	350-40	13.780	+0/-0.0035	10.236	11.024	20	M24 x 65	723	379794	455015	16.299	22.835	5.787	6.260	0.472	441
H3604	360-40	14.173	+0/-0.0035	11.024	11.811	21	M24 x 65	723	460914	543510	16.693	23.228	5.787	6.260	0.472	452
H3904	390-40	15.354	+0/-0.0035	11.811	12.598	16	M27 x 90	1069	566372	653392	17.874	25.591	5.748	6.535	0.787	556
H4204	420-40	16.535	+0/-0.0038	12.992	13.780	18	M27 x 90	1069	700590	808997	19.134	26.378	6.535	7.323	0.787	635
H4404	440-40	17.323	+0/-0.0038	13.386	14.173	20	M27 x 90	1069	790560	905605	19.921	29.134	6.850	7.638	0.787	864
H4604	460-40	18.110	+0/-0.0038	14.173	14.961	21	M27 x 90	1069	898230	1019912	20.709	30.315	6.850	7.638	0.787	933
H4804	480-40	18.898	+0/-0.0038	14.961	15.748	20	M30 x 100	1453	1127581	1269912	21.732	31.496	7.520	8.386	0.866	1098
H5004	500-40	19.685	+0/-0.0038	15.748	16.535	20	M30 x 100	1453	1203540	1340708	22.520	33.465	7.520	8.386	0.866	1268

Please note not all catalog items shown are stock. Some products are make-to-order (MTO) based on annual demand. Please verify with your customer service representative for current availability of the item desired.



Metric hex head locking screws  
ISO 4017 grade 12.9  
(See  $M_a$  for install torque.)

Shaft Sizes (mm)		Maximum Diametrical Clearance Between Shaft and Hub Bore
>	≤	
31	50	0.032
51	80	0.048
81	120	0.069
121	180	0.079
181	250	0.090
251	315	0.101
316	400	0.111
401	500	0.123
400	500	0.122
500	560	0.137

B-LOC  
Shrink Disc  
**SD40**  
Metric

## SD40 — Single Taper — Standard Duty

Part Number	Size	SD bore (Hub OD)	Hub OD Tolerance	Shaft Diameter Range		Locking Screws		$M_a$	$M_t$		A (mm)	D (mm)	L (mm)	H (mm)	e (mm)	Ship wt (kb)
		d (mm)	T <sub>Ld</sub> (mm)	ds-MIN (mm)	ds-MAX (mm)	Qty	Size	Install Torque (Nm)	Max. Transmitted Torque							
									ds-MIN (Nm)	ds-MAX (Nm)						
H0504	50-40	50	+0/-0.039	38	42	7	M8 x 20	35	1540	2130	68	90	23	26	3	0.83
H0554	55-40	55	+0/-0.046	42	48	8	M8 x 20	35	2030	3070	72	100	26	29	3	1.2
H0624	62-40	62	+0/-0.046	48	52	8	M8 x 20	35	2390	2870	80	110	26	29	3	1.4
H0684	68-40	68	+0/-0.046	50	60	9	M8 x 20	35	2300	4300	86	115	26	29	3	1.4
H0754	75-40	75	+0/-0.046	55	65	5	M10 x 25	70	3540	5990	100	138	27	31	4	2.3
H0804	80-40	80	+0/-0.046	60	70	5	M10 x 25	70	4070	6580	102	145	27	31	4	2.5
H0904	90-40	90	+0/-0.054	65	75	7	M10 x 25	70	6000	9180	114	155	34	38	4	3.4
H1004	100-40	100	+0/-0.054	70	80	9	M10 x 25	70	8130	11900	124	170	39	43	4	4.7
H1104	110-40	110	+0/-0.054	75	85	8	M12 x 30	121	11400	15100	136	185	44	49	5	6.2
H1154	115-40	115	+0/-0.054	80	90	9	M12 x 30	121	14300	18600	147	197	46.5	53	6.5	7.6
H1204	120-40	120	+0/-0.054	85	95	9	M12 x 30	121	14400	20100	147	197	46.5	53	6.5	7.3
H1254	125-40	125	+0/-0.063	85	95	10	M12 x 30	121	15300	21200	160	215	48	53	5	9.2
H1304	130-40	130	+0/-0.063	85	95	10	M12 x 30	121	14100	19600	160	215	48	53	5	8.8
H1354	135-40	135	+0/-0.063	90	100	8	M14 x 40	193	16700	22900	165	230	52	58	6	11
H1404	140-40	140	+0/-0.063	95	105	8	M14 x 40	193	18300	24600	172	230	52	58	6	11
H1554	155-40	155	+0/-0.063	105	115	10	M14 x 40	193	26500	34100	190	263	56	62	6	16
H1654	165-40	165	+0/-0.063	115	125	9	M16 x 50	295	39200	48000	204	290	61	68	7	22
H1754	175-40	175	+0/-0.063	125	135	10	M16 x 50	295	49300	60500	215	300	60	68	8	23
H1804	180-40	180	+0/-0.072	135	145	12	M16 x 50	295	68600	83100	225	320	77	85	8	34
H1854	185-40	185	+0/-0.072	135	145	12	M16 x 50	295	65500	79400	225	320	77	85	8	33
H2004	200-40	200	+0/-0.072	150	160	14	M16 x 50	295	91500	108000	240	340	77	85	8	37
H2204	220-40	220	+0/-0.072	160	170	12	M20 x 55	570	124000	145000	270	370	94	103	9	53
H2404	240-40	240	+0/-0.072	170	190	14	M20 x 55	570	151000	196000	296	405	97	107	10	66
H2604	260-40	260	+0/-0.081	190	210	16	M20 x 55	570	199000	256000	318	430	109	119	10	81
H2804	280-40	280	+0/-0.081	210	230	18	M20 x 55	570	258000	324000	340	460	122	132	10	104
H3004	300-40	300	+0/-0.081	230	250	15	M24 x 65	980	356000	436000	360	485	130	140	10	120
H3204	320-40	320	+0/-0.089	240	260	15	M24 x 65	980	359000	433000	380	520	130	140	10	139
H3404	340-40	340	+0/-0.089	250	270	18	M24 x 70	980	487000	580000	402	570	143	155	12	191
H3504	350-40	350	+0/-0.089	260	280	20	M24 x 65	980	515000	617000	414	580	147	159	12	200
H3604	360-40	360	+0/-0.089	280	300	21	M24 x 65	980	625000	737000	424	590	147	159	12	205
H3904	390-40	390	+0/-0.089	300	320	16	M27 x 90	1450	768000	886000	454	650	146	166	20	252
H4204	420-40	420	+0/-0.097	330	350	18	M27 x 90	1450	950000	1097000	486	670	166	186	20	288
H4404	440-40	440	+0/-0.097	340	360	20	M27 x 90	1450	1072000	1228000	506	740	174	194	20	392
H4604	460-40	460	+0/-0.097	360	380	21	M27 x 90	1450	1218000	1383000	526	770	174	194	20	423
H4804	480-40	480	+0/-0.097	380	400	20	M30 x 100	1970	1529000	1722000	552	800	191	213	22	498
H5004	500-40	500	+0/-0.097	400	420	20	M30 x 100	1970	1632000	1818000	572	850	191	213	22	575

Please note not all catalog items shown are stock. Some products are make-to-order (MTO) based on annual demand. Please verify with your customer service representative for current availability of the item desired.

# B-LOC Single Taper Shrink Discs

B-LOC  
Shrink Disc  
**SD42**  
Inch



Metric hex head locking screws  
ISO 4017 grade 12.9  
(See  $M_A$  for install torque.)

Shaft Sizes (inch)		Maximum Diametrical Clearance Between Shaft and Hub Bore
>	≤	
4.764	7.087	0.0031
7.126	9.843	0.0035
9.882	12.402	0.0040
12.441	15.748	0.0044
15.787	19.685	0.0048

## SD42 — Single Taper — Heavy Duty

Part Number	Size	SD bore (Hub OD)	Hub OD Tolerance	Shaft Diameter Range		Locking Screws		$M_A$	$M_t$		A (inch)	D (inch)	L (inch)	H (inch)	e (inch)	Ship wt (lb)
		d (inch)	T <sub>L</sub> d (inch)	ds-MIN (inch)	ds-MAX (inch)	Qty	Size	Install Torque (ft lb)	Max. Transmitted Torque							
								ds-MIN (ft lb)	ds-MAX (ft lb)							
H14042	140-42	5.512	+0/-0.0025	3.740	4.134	8	M16 x 50	218	19174	25516	6.850	9.055	2.520	2.913	0.394	31
H15542	155-42	6.102	+0/-0.0025	4.134	4.528	10	M16 x 50	218	27434	35251	7.638	10.354	2.756	3.150	0.394	44
H16542	165-42	6.496	+0/-0.0025	4.528	4.921	12	M16 x 50	218	38864	47493	8.031	11.417	3.071	3.465	0.394	64
H17542	175-42	6.890	+0/-0.0025	4.921	5.315	14	M16 x 50	218	51844	63348	8.425	11.811	3.031	3.465	0.433	64
H18542	185-42	7.283	+0/-0.0028	5.315	5.709	12	M20 x 70	420	79646	95133	9.134	12.598	3.937	4.409	0.472	97
H20042	200-42	7.874	+0/-0.0028	5.906	6.299	12	M20 x 70	420	92183	108407	9.685	13.386	3.937	4.409	0.472	108
H22042	220-42	8.661	+0/-0.0028	6.299	6.693	15	M20 x 80	420	117994	137168	10.472	14.567	4.764	5.276	0.512	152
H24042	240-42	9.449	+0/-0.0028	6.693	7.480	18	M20 x 70	420	146018	188791	11.732	15.945	5.118	5.669	0.551	196
H26042	260-42	10.236	+0/-0.0032	7.480	8.268	18	M20 x 70	420	213127	271386	12.047	16.929	5.669	6.299	0.630	240
H28042	280-42	11.024	+0/-0.0032	8.268	9.055	16	M24 x 90	723	283186	351770	13.150	18.110	6.142	6.772	0.630	295
H30042	300-42	11.811	+0/-0.0032	9.055	9.843	16	M24 x 90	723	319322	389381	13.937	19.094	6.220	6.929	0.709	328
H32042	320-42	12.598	+0/-0.0035	9.449	10.236	16	M24 x 90	723	379794	455015	14.724	20.472	6.535	7.244	0.709	395
H34042	340-42	13.386	+0/-0.0035	9.843	10.630	20	M27 x 100	1069	490413	581858	16.299	22.441	7.323	8.110	0.787	564
H36042	360-42	14.173	+0/-0.0035	11.024	11.811	16	M27 x 100	1069	616519	724926	16.693	23.228	7.402	8.268	0.866	584
H39042	390-42	15.354	+0/-0.0035	11.811	12.598	20	M27 x 100	1069	798673	921829	17.953	25.591	7.717	8.661	0.945	756
H42042	420-42	16.535	+0/-0.0038	12.992	13.780	24	M27 x 100	1069	948378	1088496	19.606	26.772	8.701	9.685	0.984	897
H44042	440-42	17.323	+0/-0.0038	13.386	14.173	22	M30 x 110	1453	1075959	1228614	20.236	29.134	9.173	10.157	0.984	1171
H46042	460-42	18.110	+0/-0.0038	14.173	14.961	22	M30 x 110	1453	1158555	1313422	21.024	29.921	9.173	10.157	0.984	1208
H48042	480-42	18.898	+0/-0.0038	14.961	15.748	26	M30 x 110	1453	1467552	1652655	22.441	31.496	10.630	11.732	1.102	1567
H50042	500-42	19.685	+0/-0.0038	15.748	16.535	28	M30 x 110	1453	1693215	1884956	23.228	33.071	10.630	11.811	1.181	1803

Please note not all catalog items shown are stock. Some products are make-to-order (MTO) based on annual demand. Please verify with your customer service representative for current availability of the item desired.



Metric hex head locking screws  
ISO 4017 grade 12.9  
(See  $M_a$  for install torque.)

Shaft Sizes (mm)		Maximum Diametrical Clearance Between Shaft and Hub Bore
>	≤	
121	180	0.079
181	250	0.090
251	315	0.101
316	400	0.111
401	500	0.123

B-LOC  
Shrink Disc  
**SD42**  
Metric

## SD42 — Single Taper — Heavy Duty

Part Number	Size	SD bore (Hub OD)	Hub OD Tolerance	Shaft Diameter Range		Locking Screws		$M_a$	$M_t$		A (mm)	D (mm)	L (mm)	H (mm)	e (mm)	Ship wt (kg)
		d (mm)	T <sub>L</sub> D (mm)	ds-MIN (mm)	ds-MAX (mm)	Qty	Size	Install Torque (Nm)	Max. Transmitted Torque							
								ds-MIN (Nm)	ds-MAX (Nm)							
H14042	140-42	140	+0/-0.063	95	105	8	M16 x 50	295	26000	34600	174	230	64	74	10	14
H15542	155-42	155	+0/-0.063	105	115	10	M16 x 50	295	37200	47800	194	263	70	80	10	20
H16542	165-42	165	+0/-0.063	115	125	12	M16 x 50	295	52700	64400	204	290	78	88	10	29
H17542	175-42	175	+0/-0.063	125	135	14	M16 x 50	295	70300	85900	214	300	77	88	11	29
H18542	185-42	185	+0/-0.072	135	145	12	M20 x 70	570	108000	129000	232	320	100	112	12	44
H20042	200-42	200	+0/-0.072	150	160	12	M20 x 70	570	125000	147000	246	340	100	112	12	49
H22042	220-42	220	+0/-0.072	160	170	15	M20 x 80	570	160000	186000	266	370	121	134	13	69
H24042	240-42	240	+0/-0.072	170	190	18	M20 x 70	570	198000	256000	298	405	130	144	14	89
H26042	260-42	260	+0/-0.081	190	210	18	M20 x 70	570	289000	368000	306	430	144	160	16	109
H28042	280-42	280	+0/-0.081	210	230	16	M24 x 90	980	384000	477000	334	460	156	172	16	134
H30042	300-42	300	+0/-0.081	230	250	16	M24 x 90	980	433000	528000	354	485	158	176	18	149
H32042	320-42	320	+0/-0.089	240	260	16	M24 x 90	980	515000	617000	374	520	166	184	18	179
H34042	340-42	340	+0/-0.089	250	270	20	M27 x 100	1450	665000	789000	414	570	186	206	20	256
H36042	360-42	360	+0/-0.089	280	300	16	M27 x 100	1450	836000	983000	424	590	188	210	22	265
H39042	390-42	390	+0/-0.089	300	320	20	M27 x 100	1450	1083000	1250000	456	650	196	220	24	343
H42042	420-42	420	+0/-0.097	330	350	24	M27 x 100	1450	1286000	1476000	498	680	221	246	25	407
H44042	440-42	440	+0/-0.097	340	360	22	M30 x 110	1970	1459000	1666000	514	740	233	258	25	531
H46042	460-42	460	+0/-0.097	360	380	22	M30 x 110	1970	1571000	1781000	534	760	233	258	25	548
H48042	480-42	480	+0/-0.097	380	400	26	M30 x 110	1970	1990000	2241000	570	800	270	298	28	711
H50042	500-42	500	+0/-0.097	400	420	28	M30 x 110	1970	2296000	2556000	590	840	270	300	30	818

Please note not all catalog items shown are stock. Some products are make-to-order (MTO) based on annual demand. Please verify with your customer service representative for current availability of the item desired.

# B-LOC Single Taper Shrink Discs

B-LOC  
Shrink Disc  
**SD50**  
Inch



Metric hex head locking screws  
ISO 4017 grade 10.9  
(See  $M_A$  for install torque.)

Shaft Sizes (inch)		Maximum Diametrical Clearance Between Shaft and Hub Bore
>	≤	
0.236	0.394	0.011
0.433	0.709	0.014
0.748	1.181	0.017
1.220	1.969	0.032
2.008	3.150	0.048
3.189	4.724	0.069
4.764	7.087	0.079
7.126	9.843	0.090
9.882	12.402	0.101
12.441	15.748	0.111
15.787	19.685	0.123

## SD50 — Single Taper — Standard Duty

Part Number	Size	SD bore (Hub OD)	Hub OD Tolerance	Shaft Diameter Range		Locking Screws		$M_A$	$M_T$		A (inch)	D (inch)	L (inch)	H (inch)	e (inch)	Ship wt (lb)
		d (inch)	T <sub>L</sub> d (inch)	ds-MIN (inch)	ds-MAX (inch)	Qty	Size	Install Torque (ft lb)	Max. Transmitted Torque							
									ds-MIN (ft lb)	ds-MAX (ft lb)						
H01250	12-50	0.472	+0/-0.0011	0.354	0.394	3	M5 x 10	4	15	29	0.886	1.378	0.394	0.433	0.039	0.2
H01450	14-50	0.551	+0/-0.0011	0.433	0.472	3	M5 x 10	4	21	38	0.965	1.496	0.394	0.433	0.039	0.2
H01650	16-50	0.630	+0/-0.0011	0.512	0.551	3	M6 x 12	9	71	97	1.102	1.614	0.531	0.591	0.059	0.3
H01850	18-50	0.709	+0/-0.0011	0.591	0.630	3	M6 x 12	9	89	117	1.181	1.732	0.531	0.591	0.059	0.3
H02050	20-50	0.787	+0/-0.0013	0.669	0.709	3	M6 x 12	9	108	137	1.260	1.850	0.531	0.591	0.059	0.3
H02450	24-50	0.945	+0/-0.0013	0.748	0.827	4	M6 x 16	9	127	197	1.417	1.969	0.630	0.709	0.079	0.4
H03050	30-50	1.181	+0/-0.0013	0.945	1.024	5	M6 x 16	9	219	304	1.732	2.362	0.709	0.787	0.079	0.7
H03650	36-50	1.417	+0/-0.0015	1.102	1.220	4	M8 x 16	22	415	532	2.047	2.835	0.787	0.866	0.079	1.1
H04450	44-50	1.732	+0/-0.0015	1.339	1.732	5	M8 x 20	22	541	688	2.402	3.150	0.866	0.945	0.079	1.4
H05050	50-50	1.969	+0/-0.0015	1.496	1.654	7	M8 x 20	22	907	1298	2.677	3.543	0.906	1.024	0.118	1.8
H05550	55-50	2.165	+0/-0.0018	1.654	1.890	8	M8 x 20	22	1209	1888	2.835	3.937	1.024	1.142	0.118	2.6
H06250	62-50	2.441	+0/-0.0018	1.890	2.047	8	M8 x 20	22	1431	1726	3.150	4.331	1.024	1.142	0.118	3.1
H06850	68-50	2.677	+0/-0.0018	1.969	2.362	9	M8 x 20	22	1335	2647	3.386	4.528	1.024	1.142	0.118	3.1
H07550	75-50	2.953	+0/-0.0018	2.165	2.559	5	M10 x 25	44	2043	3621	3.937	5.433	1.063	1.220	0.157	5.1
H08050	80-50	3.150	+0/-0.0018	2.362	2.756	5	M10 x 25	44	2360	3982	4.016	5.709	1.063	1.220	0.157	5.5
H09050	90-50	3.543	+0/-0.0021	2.559	2.953	7	M10 x 25	44	3488	5531	4.488	6.102	1.339	1.496	0.157	7.5
H10050	100-50	3.937	+0/-0.0021	2.756	3.150	9	M10 x 25	44	4749	7168	4.882	6.693	1.535	1.693	0.157	10.4
H11050	110-50	4.331	+0/-0.0021	2.953	3.346	8	M12 x 30	74	6497	8628	5.354	7.283	1.732	1.929	0.197	13.7
H11550	115-50	4.528	+0/-0.0021	3.150	3.543	9	M12 x 30	74	8260	10841	5.787	7.756	1.831	2.087	0.256	16.8
H12050	120-50	4.724	+0/-0.0021	3.346	3.740	9	M12 x 30	74	8112	11726	5.787	7.756	1.831	2.087	0.256	16.1
H12550	125-50	4.921	+0/-0.0025	3.346	3.740	10	M12 x 30	74	8555	12242	6.299	8.465	1.890	2.087	0.197	20
H13050	130-50	5.118	+0/-0.0025	3.346	3.740	10	M12 x 30	74	7817	11283	6.299	8.465	1.890	2.087	0.197	19
H13550	135-50	5.315	+0/-0.0025	3.543	3.937	8	M14 x 40	118	9587	13422	6.496	9.055	2.047	2.283	0.236	24
H14050	140-50	5.512	+0/-0.0025	3.740	4.134	8	M14 x 40	118	10546	14454	6.772	9.055	2.047	2.283	0.236	24
H15550	155-50	6.102	+0/-0.0025	4.134	4.528	10	M14 x 40	118	15413	20206	7.480	10.354	2.205	2.441	0.236	35
H16550	165-50	6.496	+0/-0.0025	4.528	4.921	9	M16 x 50	184	23378	28835	8.031	11.417	2.402	2.677	0.276	49
H17550	175-50	6.890	+0/-0.0025	4.921	5.315	10	M16 x 50	184	29499	36652	8.465	11.811	2.362	2.677	0.315	51
H18050	180-50	7.087	+0/-0.0028	5.315	5.709	12	M16 x 50	184	41298	50516	8.858	12.598	3.031	3.346	0.315	75
H18550	185-50	7.283	+0/-0.0028	5.315	5.709	12	M16 x 50	184	39159	48083	8.858	12.598	3.031	3.346	0.315	73
H20050	200-50	7.874	+0/-0.0028	5.906	6.299	14	M16 x 50	184	55383	65855	9.449	13.386	3.031	3.346	0.315	82
H22050	220-50	8.661	+0/-0.0028	6.299	6.693	12	M20 x 55	361	75959	89233	10.630	14.567	3.701	4.055	0.354	117
H24050	240-50	9.449	+0/-0.0028	6.693	7.480	14	M20 x 55	361	92183	120944	11.654	15.945	3.819	4.213	0.394	146
H26050	260-50	10.236	+0/-0.0032	7.480	8.268	16	M20 x 55	361	121681	158555	12.520	16.929	4.291	4.685	0.394	179
H28050	280-50	11.024	+0/-0.0032	8.268	9.055	18	M20 x 55	361	158555	201327	13.386	18.110	4.803	5.197	0.394	229
H30050	300-50	11.811	+0/-0.0032	9.055	9.843	15	M24 x 65	619	22050	272124	14.173	19.094	5.118	5.512	0.394	265
H32050	320-50	12.598	+0/-0.0035	9.449	10.236	15	M24 x 65	619	221976	269174	14.961	20.472	5.118	5.512	0.394	306
H34050	340-50	13.386	+0/-0.0035	9.843	10.630	18	M24 x 70	619	302360	360619	15.827	22.441	5.630	6.102	0.472	421
H35050	350-50	13.780	+0/-0.0035	10.236	11.024	20	M24 x 65	619	318584	383481	16.299	22.835	5.787	6.260	0.472	441
H36050	360-50	14.173	+0/-0.0035	11.024	11.811	21	M24 x 65	619	388643	460914	16.693	23.228	5.787	6.260	0.472	452
H39050	390-50	15.354	+0/-0.0035	11.811	12.598	16	M27 x 90	922	483038	558260	17.874	25.591	5.748	6.535	0.787	556
H42050	420-50	16.535	+0/-0.0038	12.992	13.780	18	M27 x 90	922	596608	689528	19.134	26.378	6.535	7.323	0.787	635
H44050	440-50	17.323	+0/-0.0038	13.386	14.173	20	M27 x 90	922	670354	771386	19.921	29.134	6.850	7.638	0.787	864
H46050	460-50	18.110	+0/-0.0038	14.173	14.961	21	M27 x 90	922	763274	869469	20.709	30.315	6.850	7.638	0.787	933
H48050	480-50	18.898	+0/-0.0038	14.961	15.748	20	M30 x 100	1254	960177	1085546	21.732	31.496	7.520	8.386	0.866	1098
H50050	500-50	19.685	+0/-0.0038	15.748	16.535	20	M30 x 100	1254	1025811	1145280	22.520	33.465	7.520	8.386	0.866	1268

Please note not all catalog items shown are stock. Some products are make-to-order (MTO) based on annual demand. Please verify with your customer service representative for current availability of the item desired.

B-LOC  
Shrink Disc  
**SD50**  
Metric



Metric hex head locking screws  
ISO 4017 grade 10.9  
(See  $M_a$  for install torque.)

Shaft Sizes (mm)		Maximum Diametrical Clearance Between Shaft and Hub Bore
>	≤	
6	10	0.011
11	18	0.014
19	30	0.017
31	50	0.032
51	80	0.048
81	120	0.069
121	180	0.079
181	250	0.090
251	315	0.101
316	400	0.111
401	500	0.123

## SD50 — Single Taper — Standard Duty

Part Number	Size	SD bore (Hub OD)	Hub OD Tolerance	Shaft Diameter Range		Locking Screws		$M_a$	$M_t$		A (mm)	D (mm)	L (mm)	H (mm)	e (mm)	Ship wt (kb)
		d (mm)		T <sub>Ld</sub> (mm)	ds-MIN (mm)	ds-MAX (mm)	Qty	Size	Install Torque (Nm)	Max. Transmitted Torque						
									ds-MIN (Nm)	ds-MAX (Nm)						
H01250	12-50	12	+0/-0.027	9	10	3	M5 x 10	5	21	40	23	35	10	11	1	0.07
H01450	14-50	14	+0/-0.027	11	12	3	M5 x 10	5	29	51	25	38	10	11	1	0.08
H01650	16-50	16	+0/-0.027	13	14	3	M6 x 12	12	96	132	28	41	14	15	2	0.13
H01850	18-50	18	+0/-0.027	15	16	3	M6 x 12	12	121	159	30	44	14	15	2	0.14
H02050	20-50	20	+0/-0.033	17	18	3	M6 x 12	12	146	186	32	47	14	15	2	0.15
H02450	24-50	24	+0/-0.033	19	21	4	M6 x 16	12	172	267	36	50	16	18	2	0.20
H03050	30-50	30	+0/-0.033	24	26	5	M6 x 16	12	297	412	44	60	18	20	2	0.31
H03650	36-50	36	+0/-0.039	28	31	4	M8 x 16	30	563	722	52	72	20	22	2	0.49
H04450	44-50	44	+0/-0.039	34	44	5	M8 x 20	30	734	933	61	80	22	24	2	0.62
H05050	50-50	50	+0/-0.039	38	42	7	M8 x 20	30	1230	1760	68	90	23	26	3	0.83
H05550	55-50	55	+0/-0.046	42	48	8	M8 x 20	30	1640	2560	72	100	26	29	3	1.2
H06250	62-50	62	+0/-0.046	48	52	8	M8 x 20	30	1940	2340	80	110	26	29	3	1.4
H06850	68-50	68	+0/-0.046	50	60	9	M8 x 20	30	1810	3590	86	115	26	29	3	1.4
H07550	75-50	75	+0/-0.046	55	65	5	M10 x 25	59	2770	4910	100	138	27	31	4	2.3
H08050	80-50	80	+0/-0.046	60	70	5	M10 x 25	59	3200	5400	102	145	27	31	4	2.5
H09050	90-50	90	+0/-0.054	65	75	7	M10 x 25	59	4730	7500	114	155	34	38	4	3.4
H10050	100-50	100	+0/-0.054	70	80	9	M10 x 25	59	6440	9720	124	170	39	43	4	4.7
H11050	110-50	110	+0/-0.054	75	85	8	M12 x 30	100	8810	11700	136	185	44	49	5	6.2
H11550	115-50	115	+0/-0.054	80	90	9	M12 x 30	100	11200	14700	147	197	46.5	53	6.5	7.6
H12050	120-50	120	+0/-0.054	85	95	9	M12 x 30	100	11000	15900	147	197	46.5	53	6.5	7.3
H12550	125-50	125	+0/-0.063	85	95	10	M12 x 30	100	11600	16600	160	215	48	53	5	9.2
H13050	130-50	130	+0/-0.063	85	95	10	M12 x 30	100	10600	15300	160	215	48	53	5	8.8
H13550	135-50	135	+0/-0.063	90	100	8	M14 x 40	160	13000	18200	165	230	52	58	6	11
H14050	140-50	140	+0/-0.063	95	105	8	M14 x 40	160	14300	19600	172	230	52	58	6	11
H15550	155-50	155	+0/-0.063	105	115	10	M14 x 40	160	20900	27400	190	263	56	62	6	16
H16550	165-50	165	+0/-0.063	115	125	9	M16 x 50	250	31700	39100	204	290	61	68	7	22
H17550	175-50	175	+0/-0.063	125	135	10	M16 x 50	250	40000	49700	215	300	60	68	8	23
H18050	180-50	180	+0/-0.072	135	145	12	M16 x 50	250	56000	68500	225	320	77	85	8	34
H18550	185-50	185	+0/-0.072	135	145	12	M16 x 50	250	53100	65200	225	320	77	85	8	33
H20050	200-50	200	+0/-0.072	150	160	14	M16 x 50	250	75100	89300	240	340	77	85	8	37
H22050	220-50	220	+0/-0.072	160	170	12	M20 x 55	490	103000	121000	270	370	94	103	9	53
H24050	240-50	240	+0/-0.072	170	190	14	M20 x 55	490	125000	164000	296	405	97	107	10	66
H26050	260-50	260	+0/-0.081	190	210	16	M20 x 55	490	165000	215000	318	430	109	119	10	81
H28050	280-50	280	+0/-0.081	210	230	18	M20 x 55	490	215000	273000	340	460	122	132	10	104
H30050	300-50	300	+0/-0.081	230	250	15	M24 x 65	840	29900	369000	360	485	130	140	10	120
H32050	320-50	320	+0/-0.089	240	260	15	M24 x 65	840	301000	365000	380	520	130	140	10	139
H34050	340-50	340	+0/-0.089	250	270	18	M24 x 70	840	410000	489000	402	570	143	155	12	191
H35050	350-50	350	+0/-0.089	260	280	20	M24 x 65	840	432000	520000	414	580	147	159	12	200
H36050	360-50	360	+0/-0.089	280	300	21	M24 x 65	840	527000	625000	424	590	147	159	12	205
H39050	390-50	390	+0/-0.089	300	320	16	M27 x 90	1250	655000	757000	454	650	146	166	20	252
H42050	420-50	420	+0/-0.097	330	350	18	M27 x 90	1250	809000	935000	486	670	166	186	20	288
H44050	440-50	440	+0/-0.097	340	360	20	M27 x 90	1250	909000	1046000	506	740	174	194	20	392
H46050	460-50	460	+0/-0.097	360	380	21	M27 x 90	1250	1035000	1179000	526	770	174	194	20	423
H48050	480-50	480	+0/-0.097	380	400	20	M30 x 100	1700	1302000	1472000	552	800	191	213	22	498
H50050	500-50	500	+0/-0.097	400	420	20	M30 x 100	1700	1391000	1553000	572	850	191	213	22	575

Please note not all catalog items shown are stock. Some products are make-to-order (MTO) based on annual demand. Please verify with your customer service representative for current availability of the item desired.

# B-LOC Single Taper Shrink Discs

B-LOC  
Shrink Disc  
**SD51**  
Inch



Metric hex head locking screws  
ISO 4017 grade 10.9  
(See  $M_a$  for install torque.)

Shaft Sizes (inch)		Maximum Diametrical Clearance Between Shaft and Hub Bore
>	≤	
4.764	7.087	0.0031
7.126	9.843	0.0035
9.882	12.402	0.0040
12.441	15.748	0.0044
15.787	19.685	0.0048

## SD51 — Single Taper — Light Duty

Part Number	Size	SD bore (Hub OD)	Hub OD Tolerance	Shaft Diameter Range		Locking Screws		$M_a$	$M_t$		A (inch)	D (inch)	L (inch)	H (inch)	e (inch)	Ship wt (lb)
		d (inch)	T <sub>L</sub> d (inch)	ds-MIN (inch)	ds-MAX (inch)	Qty	Size	Install Torque (ft lb)	Max. Transmitted Torque							
								ds-MIN (ft lb)	ds-MAX (ft lb)							
H14051	140-51	5.512	+0/-0.0025	4.331	4.921	8	M12 x 40	74	11726	17257	6.457	8.465	1.496	1.811	0.315	15.4
H15551	155-51	6.102	+0/-0.0025	5.118	5.512	9	M12 x 40	74	17994	22640	7.244	9.646	1.496	1.811	0.315	19.8
H16551	165-51	6.496	+0/-0.0025	5.315	5.709	8	M14 x 40	118	21755	26991	7.874	10.354	1.693	2.087	0.394	26
H17551	175-51	6.890	+0/-0.0025	5.709	6.102	9	M14 x 40	118	27581	33407	8.189	10.827	1.693	2.087	0.394	29
H18551	185-51	7.283	+0/-0.0028	6.102	6.496	12	M14 x 40	118	40855	48525	8.661	11.417	2.008	2.441	0.433	37
H19551	195-51	7.677	+0/-0.0028	6.496	6.890	14	M14 x 40	118	52581	61431	9.055	12.598	2.008	2.441	0.433	49
H22051	220-51	8.661	+0/-0.0028	7.087	7.874	12	M16 x 60	184	66740	86283	10.000	13.386	2.165	2.756	0.591	55
H24051	240-51	9.449	+0/-0.0028	7.874	8.465	12	M16 x 60	184	75221	90708	10.787	14.567	2.165	2.756	0.591	64
H26051	260-51	10.236	+0/-0.0032	8.661	9.252	14	M16 x 60	184	100295	118732	11.575	15.945	2.165	2.756	0.591	77
H28051	280-51	11.024	+0/-0.0032	9.055	9.843	10	M20 x 70	361	111357	137906	12.598	16.929	2.559	3.150	0.591	101
H30051	300-51	11.811	+0/-0.0032	9.843	10.630	12	M20 x 70	361	151180	182153	13.386	18.110	2.559	3.150	0.591	117
H32051	320-51	12.598	+0/-0.0035	10.630	11.417	14	M20 x 70	361	192478	230826	14.331	19.094	3.031	3.622	0.591	150
H34051	340-51	13.386	+0/-0.0035	11.417	12.205	15	M20 x 70	361	226401	267699	15.118	20.472	3.031	3.622	0.591	176
H36051	360-51	14.173	+0/-0.0035	12.205	12.992	18	M20 x 70	361	295723	344395	16.220	22.441	3.504	4.134	0.630	256
H39051	390-51	15.354	+0/-0.0035	12.992	13.780	18	M20 x 70	361	304572	353245	17.323	23.228	3.504	4.134	0.630	256
H42051	420-51	16.535	+0/-0.0038	13.780	14.567	16	M24 x 90	619	457965	525811	18.504	24.803	4.724	5.512	0.787	390
H44051	440-51	17.323	+0/-0.0038	14.567	15.354	18	M24 x 90	619	553097	629794	19.685	25.984	5.197	5.984	0.787	470
H46051	460-51	18.110	+0/-0.0038	15.354	16.142	18	M24 x 90	619	589971	664454	20.472	27.165	5.197	5.984	0.787	514
H48051	480-51	18.898	+0/-0.0038	16.142	16.929	22	M24 x 90	619	764749	860619	21.260	28.346	5.984	6.850	0.866	644
H50051	500-51	19.685	+0/-0.0038	16.535	17.717	24	M24 x 90	619	839233	994100	22.047	29.331	5.984	6.850	0.866	683

Please note not all catalog items shown are stock. Some products are make-to-order (MTO) based on annual demand. Please verify with your customer service representative for current availability of the item desired.



Metric hex head locking screws  
ISO 4017 grade 10.9  
(See  $M_a$  for install torque.)

Shaft Sizes (mm)		Maximum Diametrical Clearance Between Shaft and Hub Bore
>	≤	
121	180	0.079
181	250	0.090
251	315	0.101
316	400	0.111
401	500	0.123

B-LOC  
Shrink Disc  
**SD51**  
Metric

## SD51 — Single Taper — Light Duty

Part Number	Size	SD bore (Hub OD)	Hub OD Tolerance	Shaft Diameter Range		Locking Screws		$M_a$	$M_t$		A (mm)	D (mm)	L (mm)	H (mm)	e (mm)	Ship wt (kg)
		d (mm)		T <sub>Ld</sub> (mm)	ds-MIN (mm)	ds-MAX (mm)	Qty	Size	Install Torque (Nm)	Max. Transmitted Torque						
									ds-MIN (Nm)	ds-MAX (Nm)						
H14051	140-51	140	+0/-0.063	110	125	8	M12 x 40	100	15900	23400	164	215	38	46	8	7
H15551	155-51	155	+0/-0.063	130	140	9	M12 x 40	100	24400	30700	184	245	38	46	8	9
H16551	165-51	165	+0/-0.063	135	145	8	M14 x 40	160	29500	36600	200	263	43	53	10	12
H17551	175-51	175	+0/-0.063	145	155	9	M14 x 40	160	37400	45300	208	275	43	53	10	13
H18551	185-51	185	+0/-0.072	155	165	12	M14 x 40	160	55400	65800	220	290	51	62	11	17
H19551	195-51	195	+0/-0.072	165	175	14	M14 x 40	160	71300	83300	230	320	51	62	11	22
H22051	220-51	220	+0/-0.072	180	200	12	M16 x 60	250	90500	117000	254	340	55	70	15	25
H24051	240-51	240	+0/-0.072	200	215	12	M16 x 60	250	102000	123000	274	370	55	70	15	29
H26051	260-51	260	+0/-0.081	220	235	14	M16 x 60	250	136000	161000	294	405	55	70	15	35
H28051	280-51	280	+0/-0.081	230	250	10	M20 x 70	490	151000	187000	320	430	65	80	15	46
H30051	300-51	300	+0/-0.081	250	270	12	M20 x 70	490	205000	247000	340	460	65	80	15	53
H32051	320-51	320	+0/-0.089	270	290	14	M20 x 70	490	261000	313000	364	485	77	92	15	68
H34051	340-51	340	+0/-0.089	290	310	15	M20 x 70	490	307000	363000	384	520	77	92	15	80
H36051	360-51	360	+0/-0.089	310	330	18	M20 x 70	490	401000	467000	412	570	89	105	16	116
H39051	390-51	390	+0/-0.089	330	350	18	M20 x 70	490	413000	479000	440	590	89	105	16	116
H42051	420-51	420	+0/-0.097	350	370	16	M24 x 90	840	621000	713000	470	630	120	140	20	177
H44051	440-51	440	+0/-0.097	370	390	18	M24 x 90	840	750000	854000	500	660	132	152	20	213
H46051	460-51	460	+0/-0.097	390	410	18	M24 x 90	840	800000	901000	520	690	132	152	20	233
H48051	480-51	480	+0/-0.097	410	430	22	M24 x 90	840	1037000	1167000	540	720	152	174	22	292
H50051	500-51	500	+0/-0.097	420	450	24	M24 x 90	840	1138000	1348000	560	745	152	174	22	310

Please note not all catalog items shown are stock. Some products are make-to-order (MTO) based on annual demand. Please verify with your customer service representative for current availability of the item desired.

# B-LOC Single Taper Shrink Discs

B-LOC  
Shrink Disc  
**SD<sup>52</sup>**  
Inch



Metric hex head locking screws  
ISO 4017 grade 10.9  
(See  $M_A$  for install torque.)

Shaft Sizes (inch)		Maximum Diametrical Clearance Between Shaft and Hub Bore
>	≤	
4.764	7.087	0.0031
7.126	9.843	0.0035
9.882	12.402	0.0040
12.441	15.748	0.0044
15.787	19.685	0.0048

## SD52 — Single Taper — Heavy Duty

Part Number	Size	SD bore (Hub OD)	Hub OD Tolerance	Shaft Diameter Range		Locking Screws		$M_A$	$M_T$		A (inch)	D (inch)	L (inch)	H (inch)	e (inch)	Ship wt (lb)
		d (inch)	T <sub>L</sub> d (inch)	ds-MIN (inch)	ds-MAX (inch)	Qty	Size	Install Torque (ft lb)	Max. Transmitted Torque							
									ds-MIN (ft lb)	ds-MAX (ft lb)						
H14052	140-52	5.512	+0/-0.0025	3.740	4.134	8	M16 x 50	184	15192	20649	6.850	9.055	2.520	2.913	0.394	31
H15552	155-52	6.102	+0/-0.0025	4.134	4.528	10	M16 x 50	184	21976	28687	7.638	10.354	2.756	3.150	0.394	44
H16552	165-52	6.496	+0/-0.0025	4.528	4.921	12	M16 x 50	184	31490	38717	8.031	11.417	3.071	3.465	0.394	64
H17552	175-52	6.890	+0/-0.0025	4.921	5.315	14	M16 x 50	184	42183	52065	8.425	11.811	3.031	3.465	0.433	64
H18552	185-52	7.283	+0/-0.0028	5.315	5.709	12	M20 x 70	361	66888	80383	9.134	12.598	3.937	4.409	0.472	97
H20052	200-52	7.874	+0/-0.0028	5.906	6.299	12	M20 x 70	361	77434	91445	9.685	13.386	3.937	4.409	0.472	108
H22052	220-52	8.661	+0/-0.0028	6.299	6.693	15	M20 x 70	361	98820	115044	10.472	14.567	4.764	5.276	0.512	152
H24052	240-52	9.449	+0/-0.0028	6.693	7.480	18	M20 x 70	361	121681	158555	11.732	15.945	5.118	5.669	0.551	196
H26052	260-52	10.236	+0/-0.0032	7.480	8.268	18	M20 x 70	361	178466	229351	12.047	16.929	5.669	6.299	0.630	240
H28052	280-52	11.024	+0/-0.0032	8.268	9.055	16	M24 x 90	619	238938	297935	13.150	18.110	6.142	6.772	0.630	295
H30052	300-52	11.811	+0/-0.0032	9.055	9.843	16	M24 x 90	619	269174	330383	13.937	19.094	6.220	6.929	0.709	328
H32052	320-52	12.598	+0/-0.0035	9.449	10.236	16	M24 x 90	619	320796	385693	14.724	20.472	6.535	7.244	0.709	395
H34052	340-52	13.386	+0/-0.0035	9.843	10.630	20	M27 x 100	922	415929	495575	16.299	22.441	7.323	8.110	0.787	564
H36052	360-52	14.173	+0/-0.0035	11.024	11.811	16	M27 x 100	922	524336	618732	16.693	23.228	7.402	8.268	0.866	584
H39052	390-52	15.354	+0/-0.0035	11.811	12.598	20	M27 x 100	922	680678	786873	17.953	25.591	7.717	8.661	0.945	756
H42052	420-52	16.535	+0/-0.0038	12.992	13.780	24	M27 x 100	922	806785	929204	19.606	26.772	8.701	9.685	0.984	897
H44052	440-52	17.323	+0/-0.0038	13.386	14.173	22	M30 x 110	1254	915929	1049410	20.236	29.134	9.173	10.157	0.984	1171
H46052	460-52	18.110	+0/-0.0038	14.173	14.961	18	M30 x 110	1254	963127	1095870	21.024	29.921	9.173	10.157	0.984	1208
H48052	480-52	18.898	+0/-0.0038	14.961	15.748	26	M30 x 110	1254	1250737	1412979	22.441	31.496	10.630	11.732	1.102	1567
H50052	500-52	19.685	+0/-0.0038	15.748	16.535	28	M30 x 110	1254	1444690	1611357	23.228	33.071	10.630	11.811	1.181	1803

Please note not all catalog items shown are stock. Some products are make-to-order (MTO) based on annual demand. Please verify with your customer service representative for current availability of the item desired.



Metric hex head locking screws  
ISO 4017 grade 10.9  
(See  $M_a$  for install torque.)

Shaft Sizes (mm)		Maximum Diametrical Clearance Between Shaft and Hub Bore
>	≤	
121	180	0.079
181	250	0.090
251	315	0.101
316	400	0.111
401	500	0.123

B-LOC  
Shrink Disc  
**SD52**  
Metric

## SD52 — Single Taper — Heavy Duty

Part Number	Size	SD bore (Hub OD)	Hub OD Tolerance	Shaft Diameter Range		Locking Screws		$M_a$	$M_t$		A (mm)	D (mm)	L (mm)	H (mm)	e (mm)	Ship wt (kb)
		d (mm)	T <sub>Ld</sub> (mm)	ds-MIN (mm)	ds-MAX (mm)	Qty	Size	Install Torque (Nm)	Max. Transmitted Torque							
									ds-MIN (Nm)	ds-MAX (Nm)						
H14052	140-52	140	+0/-0.063	95	105	8	M16 x 50	250	20600	28000	174	230	64	74	10	14
H15552	155-52	155	+0/-0.063	105	115	10	M16 x 50	250	29800	38900	194	263	70	80	10	20
H16552	165-52	165	+0/-0.063	115	125	12	M16 x 50	250	42700	52500	204	290	78	88	10	29
H17552	175-52	175	+0/-0.063	125	135	14	M16 x 50	250	57200	70600	214	300	77	88	11	29
H18552	185-52	185	+0/-0.072	135	145	12	M20 x 70	490	90700	109000	232	320	100	112	12	44
H20052	200-52	200	+0/-0.072	150	160	12	M20 x 70	490	105000	124000	246	340	100	112	12	49
H22052	220-52	220	+0/-0.072	160	170	15	M20 x 70	490	134000	156000	266	370	121	134	13	69
H24052	240-52	240	+0/-0.072	170	190	18	M20 x 70	490	165000	215000	298	405	130	144	14	89
H26052	260-52	260	+0/-0.081	190	210	18	M20 x 70	490	242000	311000	306	430	144	160	16	109
H28052	280-52	280	+0/-0.081	210	230	16	M24 x 90	840	324000	404000	334	460	156	172	16	134
H30052	300-52	300	+0/-0.081	230	250	16	M24 x 90	840	365000	448000	354	485	158	176	18	149
H32052	320-52	320	+0/-0.089	240	260	16	M24 x 90	840	435000	523000	374	520	166	184	18	179
H34052	340-52	340	+0/-0.089	250	270	20	M27 x 100	1250	564000	672000	414	570	186	206	20	256
H36052	360-52	360	+0/-0.089	280	300	16	M27 x 100	1250	711000	839000	424	590	188	210	22	265
H39052	390-52	390	+0/-0.089	300	320	20	M27 x 100	1250	923000	1067000	456	650	196	220	24	343
H42052	420-52	420	+0/-0.097	330	350	24	M27 x 100	1250	1094000	1260000	498	680	221	246	25	407
H44052	440-52	440	+0/-0.097	340	360	22	M30 x 110	1700	1242000	1423000	514	740	233	258	25	531
H46052	460-52	460	+0/-0.097	360	380	18	M30 x 110	1700	1306000	1486000	534	760	233	258	25	548
H48052	480-52	480	+0/-0.097	380	400	26	M30 x 110	1700	1696000	1916000	570	800	270	298	28	711
H50052	500-52	500	+0/-0.097	400	420	28	M30 x 110	1700	1959000	2185000	590	840	270	300	30	818

Please note not all catalog items shown are stock. Some products are make-to-order (MTO) based on annual demand. Please verify with your customer service representative for current availability of the item desired.