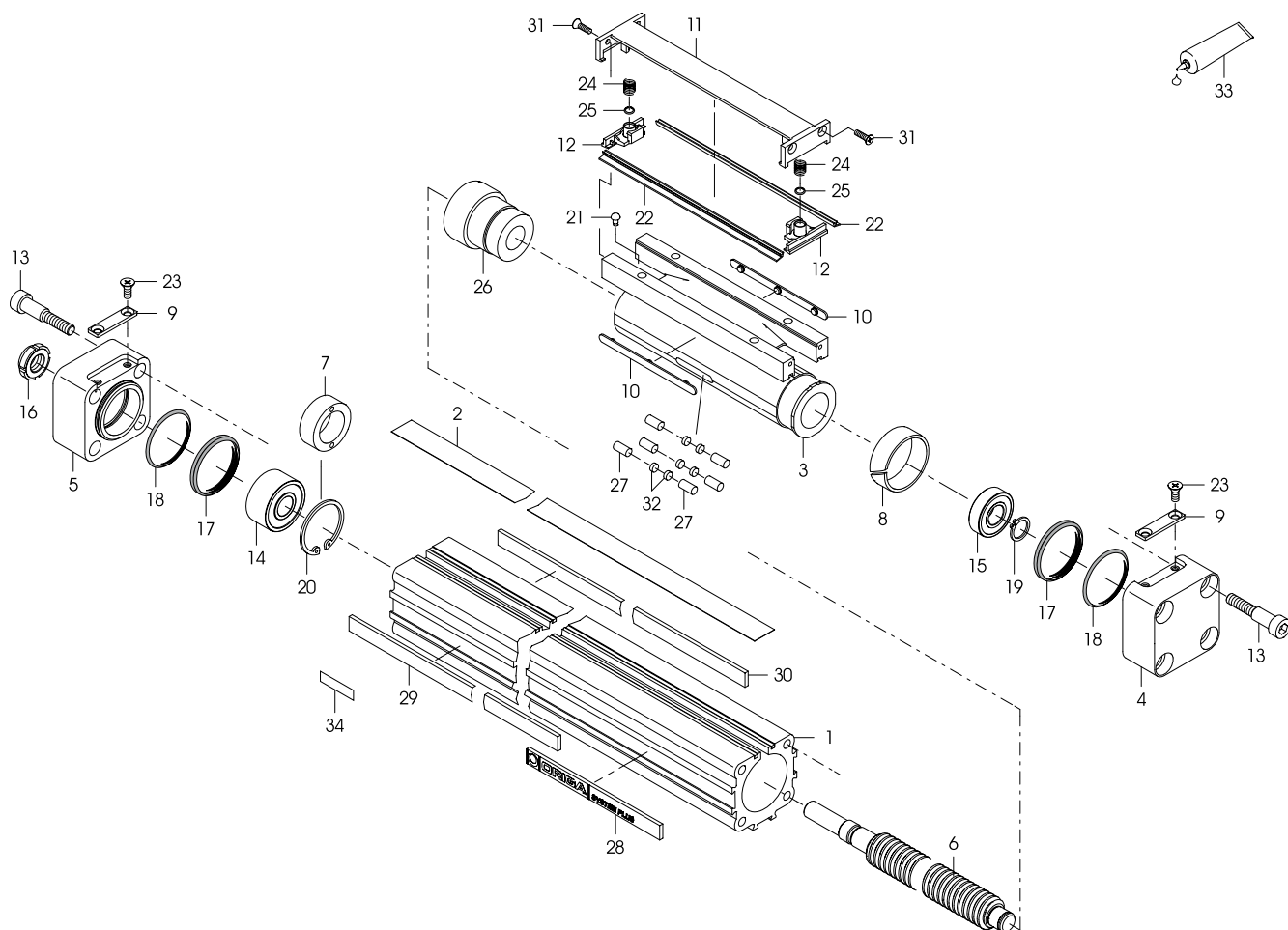


11.7 OSP-E..ST

Linear drive with trapezoidal screw drive and internal plain bearing guide



Supplied kits

Description	Order No.			Contents
	OSP-E25ST	OSP-E32ST	OSP-E50ST	
Seal kit	12125	12126	12127	8, 10, 11, 12, 17, 18, 22, 24, 25, 31, 33
Service pack	15250	15251	15252	seal kit + 2
Carrier kit	12816	12825	12834	3, 8, 10, 11, 12, 21, 22, 24, 25, 26, 27, 31, 32
End cap kit run unit spindle	12129	12131	12133	4, 9, 13, 15, 17, 18, 19, 23
End cap kit actuator spindle	12128	15617	15618	5, 9, 13, 14, 17, 18, 20, 23

POS.	DESCRIPTION
1	CYLINDER BARREL CUT TO LENGTH OSP-E..ST
2	OUTER BAND CUT TO LENGTH OSP-E..ST
3	CARRIER OSP-E..ST
4	END CAP FOR OSP-E..ST
5	END CAP DRIVE FOR OSP-E..ST
6	TRAPEZOIDAL THREADED SPINDLE OSP-E..ST CUT TO LENGTH
7	CLAMPING RING OSP-E25ST
8	SUPPORT RING OSP-E..ST
9	CLAMPING PIECE EXTERN
10	SLIDE RAIL OSP-E..ST
11	COVER
12	WIPER
13	SCREW FOR COVER
14	BALL BEARING
15	BALL BEARING
16	NUT
17	X-RING
18	O-RING
19	CIRCLIP DIN 471
20	CIRCLIP OSP-E32ST / OSP-E50ST

POS.	DESCRIPTION
21	SCREW
22	SIDE WIPER CUT TO LENGTH ON SIDE
23	COUNTERSUNK SCREW DIN 963
24	THRUST SPRING FOR WIPER
25	O-RING
26	TRAPEZOIDAL THREADED NUT FOR OSP-E..ST
27	STEEL BOLT
28	COVER RAIL FOR NAMEPLATE
29	COVER RAIL METER GOODS
30	COVER RAIL METER GOODS
31	COUNTERSUNK SCREW DIN 7991
32	MAGNET FOR OSP-E..ST
33	GREASE
34	IDENTIFICATION PLATE