

GV Series soft-start valve

MOTIONUSA



GV

Specification

Model	GV200-06	GV200-08	GV300-08	GV300-10	GV300-15	GV400-10	GV400-15
Fluid	Air						
Port size	1/8"	1/4"	1/4"	3/8"	1/2"	3/8"	1/2"
Pressure range	0.25~0.9MPa(35~130psi)						
Proof pressure	1.5MPa(215psi)						
Temperature range	-20~70℃						
Acting type	Solenoid control						
Exhaust port size	1/4"		3/8"			1/2"	
Power connection	Terminal、Grommet						
Standard voltage	AC220V, 110V, 24V(50/60Hz); DC12V, 24V						
Voltage range	-15%~+10%						
Insulation	Class B						
Power consumption	AC: 3.5VA; DC: 2.5W						
Option pressure gauge	F: Square pressure gauge; C: Circular pressure gauge						
Suitable F.R.L type	GC200-06	GC200-08	GC300-08	GC300-10	GC300-15	GC400-10	GC400-15

① PT thread, NPT thread and G thread are available.

Ordering code

GV300 10 □ □ F 1 A □ □

Model

GV200: 200 Series soft start-up valve
GV300: 300 Series soft start-up valve
GV400: 400 Series soft start-up valve

Port size

Model	Port size
200 Series	06: 1/8"
	08: 1/4"
	08: 1/4"
300 Series	10: 3/8"
	15: 1/2"
	15: 1/2"
400 Series	10: 3/8"
	15: 1/2"

Accessories

Blank: Bracket
J: No bracket(standard configuration)

Pressure gauge

Blank: Pressure gauge
N: No pressure gauge

Thread type

Blank: PT
T: NPT
G: G

Electrical entry

Blank: Terminal
I: Grommet

Voltage

A: AC220V(50/60Hz)
B: DC24V
C: AC110V(50/60Hz)
E: AC24V(50/60Hz)
F: DC12V

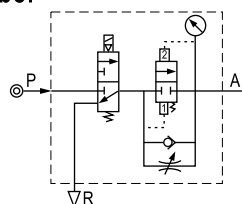
Scale

1: MPa
2: psi
3: bar

Pressure gauge shape

F: Square
C: Circular

Symbol

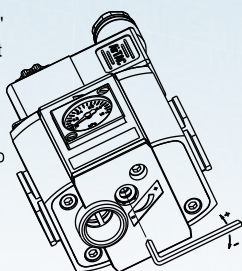


Product feature

Soft start-up valve is used to input compressed air into pneumatic system slowly and has the effect of safety and protection. Air intake is connected with the input P of Soft start-up valve. If coil is energized, the 3/2 way valve opens. At this time, a little air comes to output A through throttle valve, which increases the pressure of the system gradually; when the output pressure is equal the half of the input pressure, Soft start-up valve completely opens and the flow at this time reaches the highest value of itself. When the coil is de-energized, air intake P closes, the air returns to R orifice through reflux valve and is quickly exhausted. The pressure of the system falls to zero, which protects the whole system.

Attention

Manually adjust the "+" and "-" throttle screw at the bottom of the soft start-up valve as per the requirement of start speed. It shall go slowly, other wise sudden acting of the product or system shall be caused with a heavy impact.



Note: When it is used with F.R.L. combination, extra mounting bracket is need. Please refer to P148 for order detail.

Inner structure

19	20	21	No. Item	No. Item	No. Item
18	22	23	1 Bottom cover	13 Gasket	25 Spring
17	24	25	2 Gasket	14 Gasket	26 Manual override
16	26	27	3 Spool	15 Pilot kit	27 Fixed screw
15	27	28	4 Body	16 spring	28 Spring
14	28	29	5 O-ring	17 Fixed Ipate	29 Valve spool
13	29	30	6 O-ring	18 Coil set	30 O-ring
12	30	31	7 Spring	19 Nut	31 Valve spool
11	31	32	8 Inlet piston	20 Connector	32 O-ring
10	32	33	9 Piston gasket	21 Spring	33 O-ring
9	33	34	10 O-ring	22 O-ring	34 Inlet plug
8	34		11 Snap ring	23 Manual override block	
7			12 Gasket	24 O-ring	

Dimensions

Item\Model	GV200	GV300	GV400
	06 08	08 10 15	10 15
A	80	95	120
AB	59	74	90
B	57	62.2	80
BA	24.5	31.5	40.5
C	123.5	131	142.5
K	5.5	6.5	8.5
KA	67	82	102
KB	8	8	11
KC	30.5	34.5	39
P	1/8" 1/4"	1/4" 3/8" 1/2"	3/8" 1/2"
PA	30	34	40.5
Q	1/4"	3/8"	1/2"