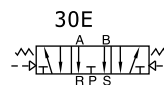
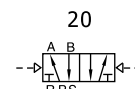
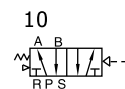


4A400 Series



Ordering code

4A 4 10 15 T

① ② ③ ④ ⑤

① Model

4A: Air valve
(5/2, 5/3 way)

② Code

4: 400 Series

③ Valve type

10: Single air control 5/2 way
20: Double air control 5/2 way
30C: Double air control 5/3 way
closed center
30E: Double air control 5/3 way
exhaust center
30P: Double air control 5/3 way
pressure center

④ Port size

15: 1/2"

⑤ Thread type

T: NPT

Please refer to P85 for manifold specification and the order way.

Specification

Model	4A410-15	4A420-15	4A430C-15	4A430E-15	4A430P-15
Fluid	Air(to be filtered by 40 μ m filter element)				
Acting	Exterior control				
Port size [Note1]	In=Out=Exhaust=1/2"				
Orifice size	50.0mm ² (Cv=2.79)		30.0mm ² (Cv=1.68)		
Valve type	5 port 2 position		5 port 3 position		
Operating pressure	21~114psi(0.15~0.8MPa)				
Proof pressure	175psi(1.2MPa)				
Temperature	-20~70 ℃				
Material of body	Aluminum alloy				
Lubrication [Note2]	Not required				
Max. frequency [Note3]	3 cycle/sec				
Weight (g)	555	685	735		

[Note1] NPT thread is available.

[Note2] Once lubricated air is used, continue with same medium to optimize valve life span.
Lubricants like ISO VG32 or equivalent are recommended.

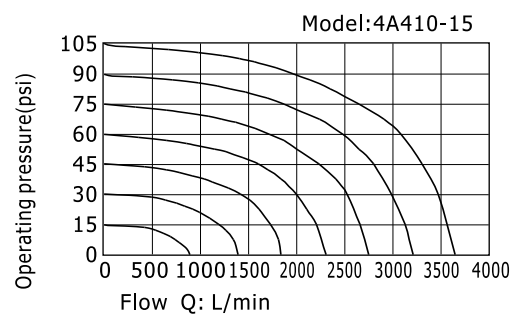
[Note3] The maximum actuation frequency is in the no-load state.

4A400 Series

Product feature

1. Structure in sliding column mode: good tightness and sensitive reaction.
2. Three position air valves have three kinds of central function for your choice.
3. Double air control valves have memory function.
4. Internal hole adopts special processing technology which has little attrition friction, low start pressure and long service life.
5. No need to add oil for lubrication.
6. Integrate with the manifold to save installation space.

Flow chart

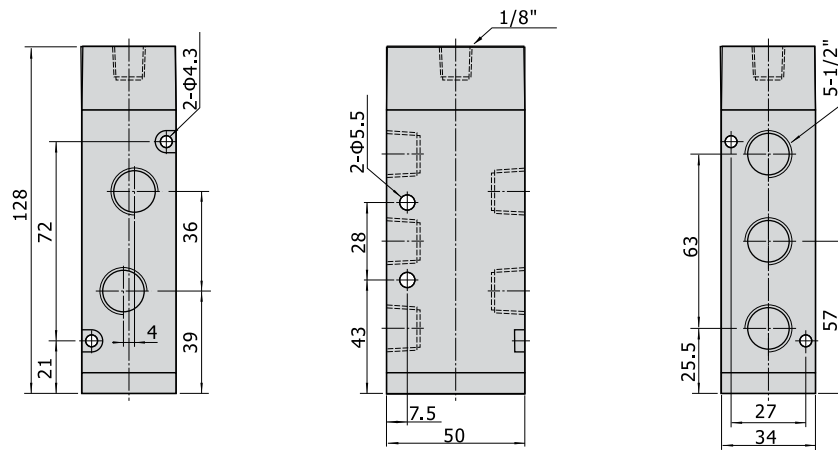


4A400 Series

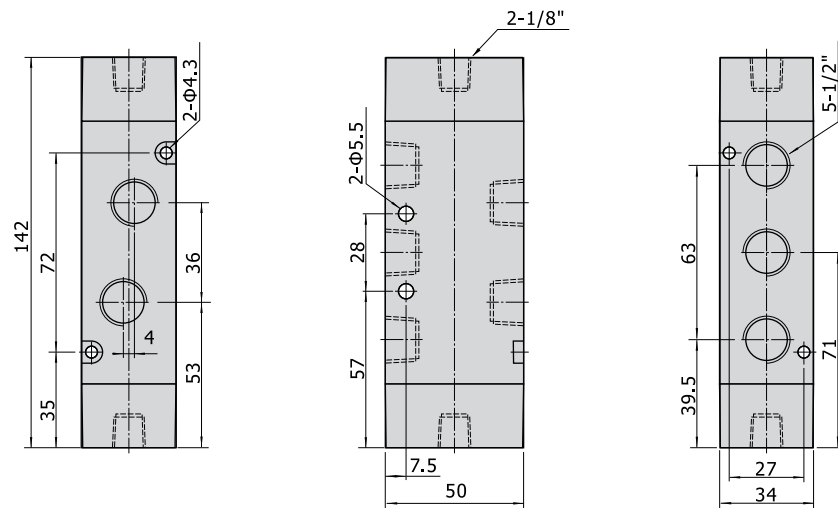
Dimensions

4A410

[Unit: mm]



4A420



4A430

